



**MICRO SWITCH**

FREEPORT, ILLINOIS, U.S.A.  
A DIVISION OF HONEYWELL

FED. MFG. CODE 91929

# SWITCH - BASIC

CATALOG LISTING

## BZ - 2RQ181

DRAWING NUMBER  
**BZ - 2RQ181**

PAGE 1 OF 1

ISSUE  
**M**

12

REVISIONS

A	CO17410	B C H	16 NOV 64
B	CO46304	A P	OCT 79
C	CO 58037	SMA	1 OCT 85
D	CO-77426-B	DLT	29 JUN 94
E	CO78874	DLT	18 NOV 94
F	CO-82133	CSL	2 AUG 96
G	CO93346	DLT	11 SEP 98
H	CO-94212-J	J J A	5 OCT 99

FORMTEK  
FO-30378

DRAWN

REPLACES

RELEASE NO.

CHECK

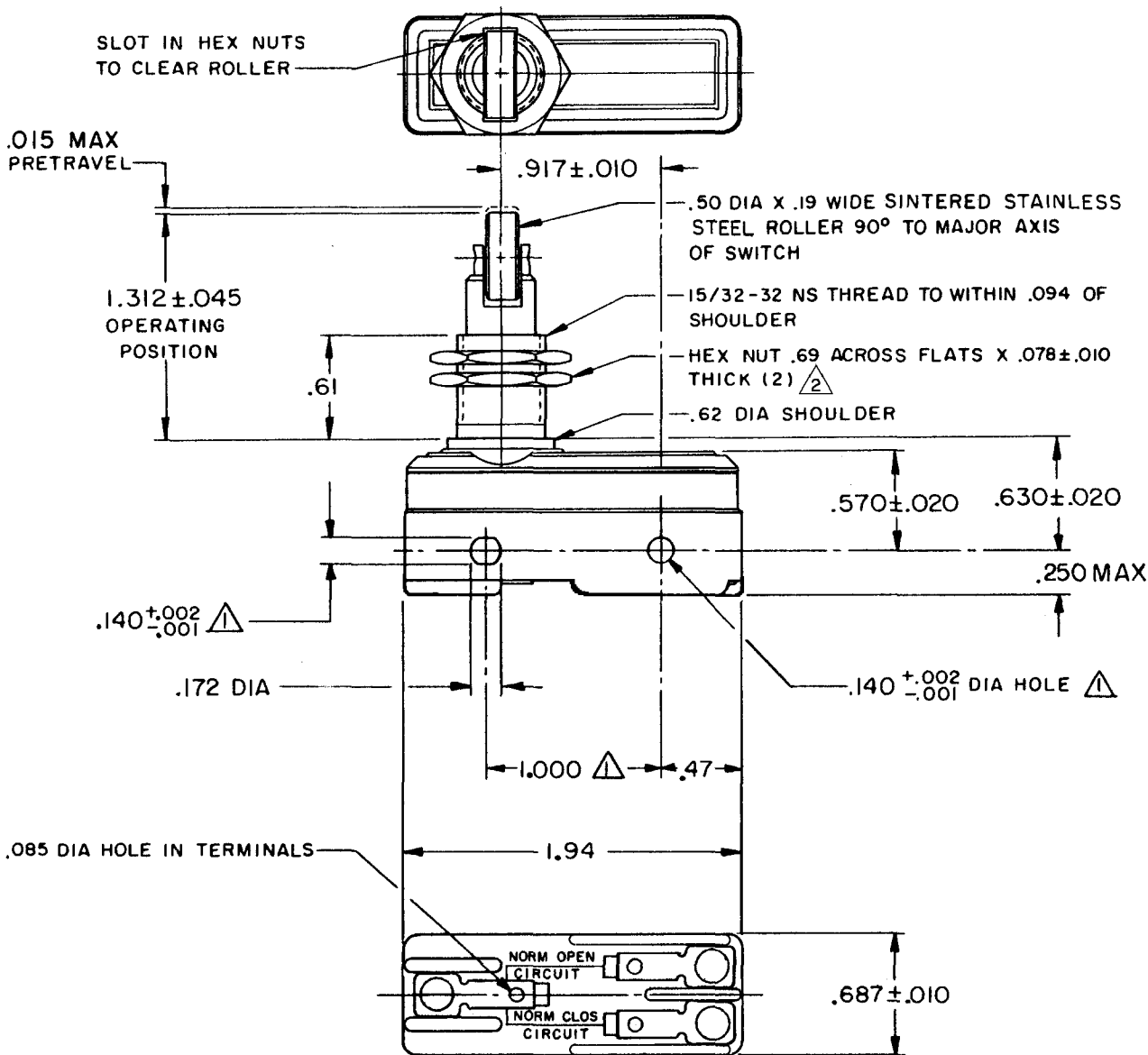
CHECK

24 NOV 64

16 NOV 64

CHECK

G C H



- NOTES
- ① MOUNTING HOLES WILL ACCEPT PINS OR SCREWS OF .139 MAX DIA ON 1.000 ± .002 CENTERS
  - ② HARDWARE FURNISHED UNASSEMBLED

THIS DRAWING COVERS A PROPRIETARY ITEM AND IS THE PROPERTY OF MICRO SWITCH, A DIVISION OF HONEYWELL. THIS DRAWING IS NOT TO BE COPIED OR USED WITHOUT THE APPROVAL OF MICRO SWITCH.

CHARACTERISTICS	ELECTRICAL DATA	SCALE FULL
OPERATING FORCE ----- 9-13 OZ	CONTACT ARRANGEMENT S P D T	DO NOT SCALE PRINT
RELEASE FORCE ----- 4 OZ MIN	UNDERWRITERS' LAB. INC. LISTED RATING	UNLESS OTHERWISE NOTED
DIFFERENTIAL TRAVEL --- .0004 - .0020	-L96- 15 A - 125, 250, OR 480 VAC	DIMENSIONS ARE IN INCHES
OVERTRAVEL ----- .141 MIN	1/2 A - 125 VDC; 1/4 A - 250 VDC	<b>TOLERANCES ARE:</b>
	1/8 HP - 125 VAC; 1/4 HP - 250 VAC	ONE PLACE (.0) ± .030
	-L288-	TWO PLACE (.00) ± .015
	-L306- 16A 250V ~ T85 5E4	THREE PLACE (.000) ± .005
		ANGLES ± 2°
		WEIGHT .107 LB