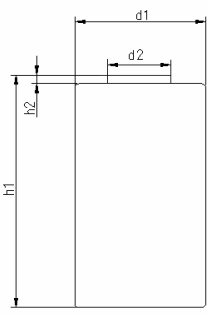


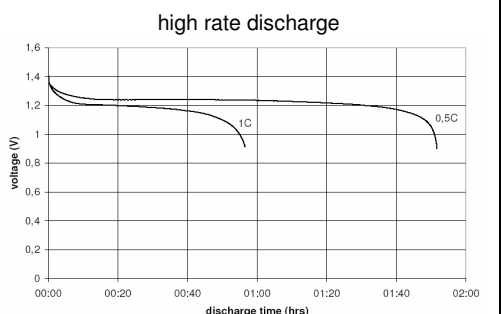
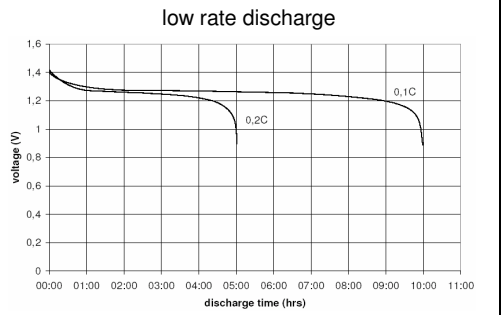
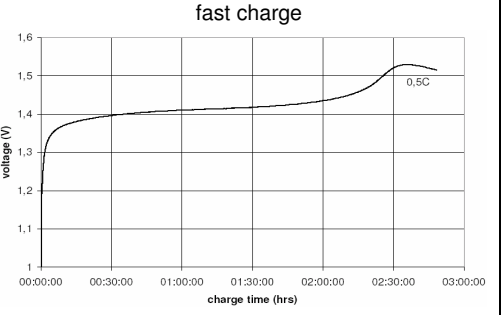
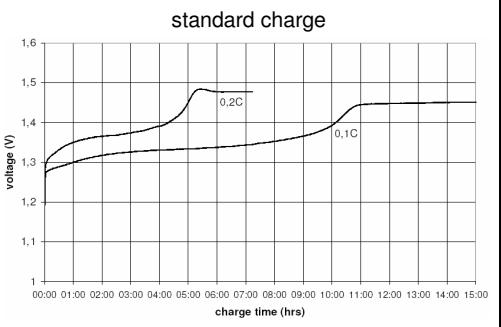
		Conditions	
cell type:		NiMH	
cell size:		Sub-C	
nominal voltage:	1.2	V	
max. charge voltage:	1.5	V	at standard charge (0.1C / 20°C)
capacity			
nominal:	3000	mAh	discharge at 0.2C
minimum:	2750	mAh	discharge at 0.2C
	2600	mAh	discharge at 1C
			1.0V end discharge voltage
			ta: 20°C
max. continuous discharge current:	15	A	ta: 0...45°C
max. peak current:	30	A	
charge	current	time	
standard charge:	300 mA	14...16hrs	
quick charge:	850 mA	4hrs	
fast charge:	3000 mA	1.1hrs	
recommended charge termination control parameters:	5...10 mV	- delta V	
	0.8...1 °C	temperature rise per minute	
	45...50 °C	TCO (temperature cut off)	
trickle charge current:	30...150 mA	(recommended)	
continuous overcharge: (less than 1 year)	≤ 300 mA	no conspicuous deformation	
		no leakage	
internal resistance: (impedance)	≤ 6 mΩ	at 1KHz	battery fully charged
life expectancy:	≥ 500 cycles	acc. IEC standard	
self discharge			
charge retention: (at ≤ 20°C ambient)	≥ 80 %	after 6 months storage	
	≥ 75 %	after 12 months storage	
initial capacity:	≥ 2100 mAh	within 30 days after delivery	discharge at 0.2C
ambient temperature range:	0...45 °C	standard charge	
	10...40 °C	fast charge	
	- 20...65 °C	discharge (≤1.0C)	
	0...45 °C	discharge (>1.0C)	
	- 20...50 °C	storage (≤3months)	
	- 20...40 °C	storage (≤6months)	
	- 20...30 °C	storage (≤24months)	

QCT1: 20/2700/6
QCT2: 30/2550/8

mechanical specifications	
cell dimensions (incl. label)	
diameter d1:	22.5 - 1.0 mm
diameter d2:	10.0 ± 1.0 mm
height h1:	43.0 - 1.0 mm
height h2:	min. 0.3 mm
weight:	59 ± 5 g



Diagrams



tags
material: Fe, Nickel plated
length: 30mm
width: 5mm
thickness: min. 0.2mm

	ANSMANN Specifications for model:	SubC - 3000mAh low self discharge with tags (Z-form) bulk package
	data sheet no. / part no.	5035391
	version no.	0
	author / date	Gramlich / 13.03.2009

Manufacturer reserves the right to alter or amend the design, model and specification without prior notice