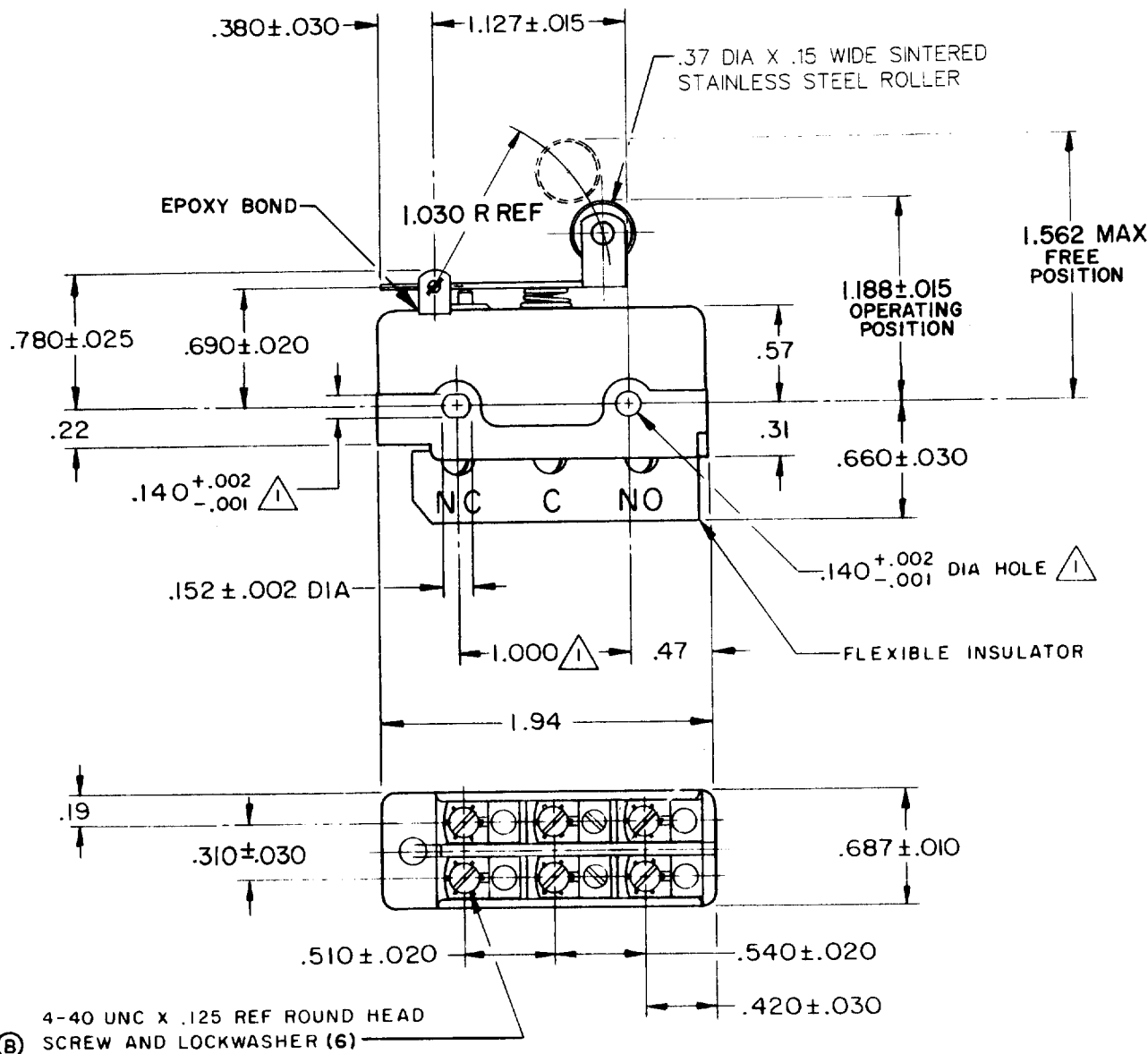


**DT-2RV22-A7**  
 REPLACES  
**M**  
 DRAWING NUMBER  
**DT-2RV22-A7**  
 ISSUE  
**13**  
 REVISIONS  

A	CO17725
L E B	11 JUNE 63
B	CO24941
M B S	2 DEC 68
C	CO28075
M B S	26 AUG 69
D	CO37528
C J H	31 AUG 76
E	CO38280
K P K	30 MAR 77
F	CO61634
TSK	17 JUL 87
G	CO75204-B
S A V	1 FEB 94

 CHECK  
 19 JUN 63  
 18 JUN 63  
 11 JUNE 63  
 DRAWN  
 L E B



NOTE -  
 MOUNTING HOLES WILL ACCEPT PINS OR SCREWS  
 OF .139 MAX DIA ON 1.000±.002 CENTERS

THIS DRAWING COVERS A PROPRIETARY ITEM AND IS THE PROPERTY OF MICRO SWITCH, A DIVISION OF MINNEAPOLIS-HONEYWELL REGULATOR CO. THIS DRAWING IS NOT TO BE COPIED OR USED WITHOUT THE APPROVAL OF MICRO SWITCH.

CHARACTERISTICS	ELECTRICAL DATA	SCALE FULL
OPERATING FORCE ----- 9-14 OZ	CONTACT ARRANGEMENT D P D T	DO NOT SCALE PRINT
RELEASE FORCE ----- 3 OZ MIN	UL LISTED-FILE E12252 CODE L59	UNLESS OTHERWISE NOTED DIMENSIONS ARE IN INCHES
DIFFERENTIAL TRAVEL ----- .195-.305	10A-125 OR 250 VAC	<b>TOLERANCES ARE:</b>
OVERTRAVEL ----- .031 MIN	0.3A-125 VDC; 0.15A-250 VDC	ONE PLACE (.0) ±.030 TWO PLACE (.00) ±.015 THREE PLACE (.000) ±.005 ANGLES ±
	(SR)	WEIGHT .085 LB