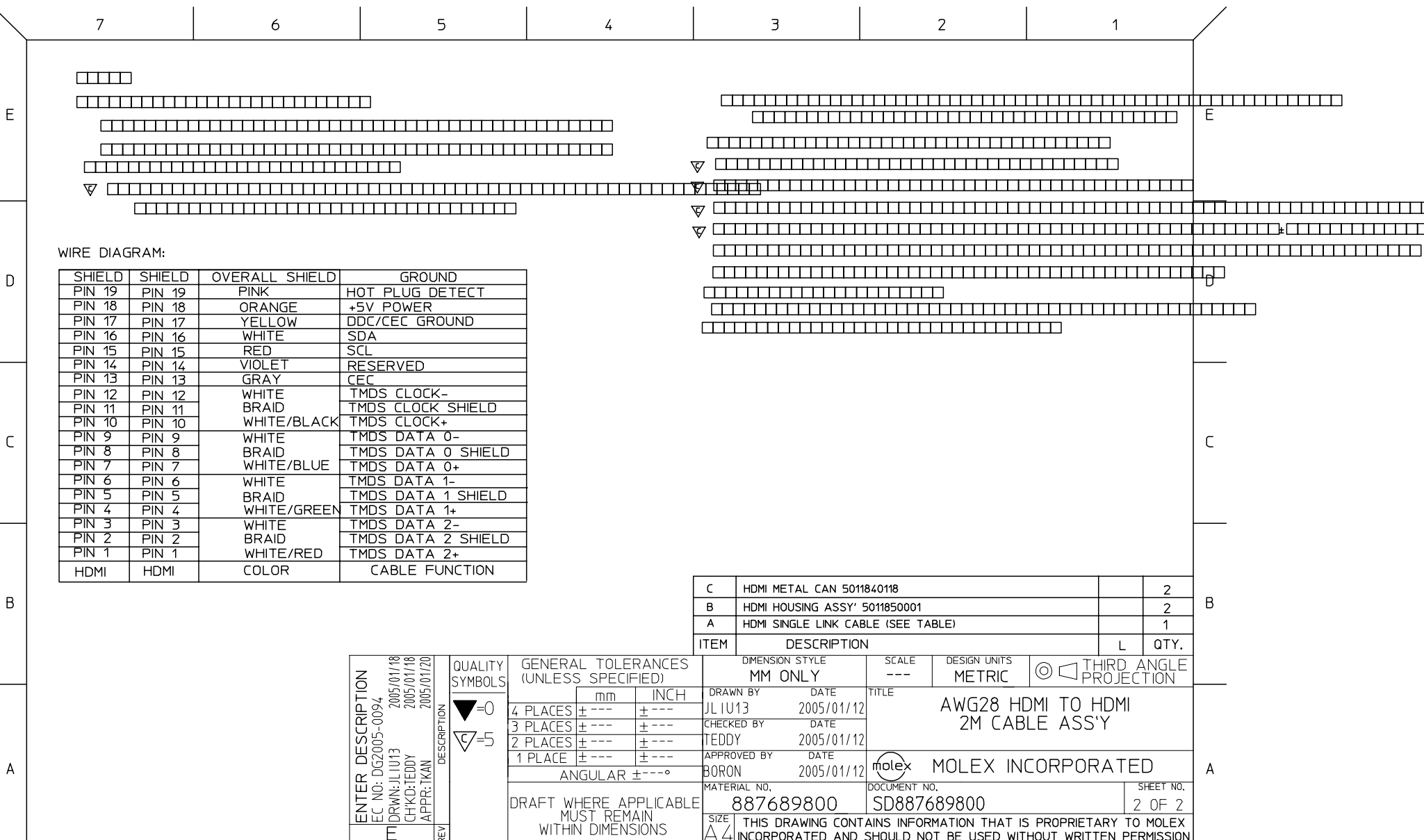


| MX P/N     | DESCRIPTION                 | LENGTH     | CABLE COLOR | CABLE OD             | CABLE P/N |
|------------|-----------------------------|------------|-------------|----------------------|-----------|
| 88768-9830 | HDMI TO HDMI CABLE ASS'Y,5M | 5000 ± 100 | BLACK       | 7.3MM(TMDS - AWG#28) | 887808610 |
| 88768-9820 | HDMI TO HDMI CABLE ASS'Y,3M | 3000 ± 80  | BLACK       | 7.3MM(TMDS - AWG#28) | 887808610 |
| 88768-9810 | HDMI TO HDMI CABLE ASS'Y,2M | 2000 ± 60  | BLACK       | 7.3MM(TMDS - AWG#28) | 887808610 |
| 88768-9800 | HDMI TO HDMI CABLE ASS'Y,1M | 1000 ± 30  | BLACK       | 7.3MM(TMDS - AWG#28) | 887808610 |

|   |                               |                                       |  |                            |  |                             |   |                        |  |
|---|-------------------------------|---------------------------------------|--|----------------------------|--|-----------------------------|---|------------------------|--|
| ENTER DESCRIPTION<br>EC NO: DG2005-0094<br>DRWN: JLIU13 2005/01/18<br>CHKD: TEDDY 2005/01/18<br>APPR: TKAN 2005/01/20 | QUALITY SYMBOLS<br>▽=0<br>◻=0 | GENERAL TOLERANCES (UNLESS SPECIFIED) |  | DIMENSION STYLE<br>MM ONLY |  | SCALE<br>---                | DESIGN UNITS<br>METRIC                        | THIRD ANGLE PROJECTION |  |
|   |                               |                                       | mm   | INCH                       | DRAWN BY<br>JLIU13   | DATE<br>2005/01/12          | TITLE<br>AWG28 HDMI TO HDMI<br>1M CABLE ASS'Y |                        |  |
|   |                               | 4 PLACES                              | ± ---  | ± ---                      | CHECKED BY<br>TEDDY  | DATE<br>2005/01/12          | MOLEX INCORPORATED                            |                        |  |
|   |                               | 3 PLACES                              | ± ---  | ± ---                      | APPROVED BY<br>BORON   | DATE<br>2005/01/12          |   |                        |  |
| 2 PLACES  | ± ---                         | ± ---                                 | ANGULAR ± ---°   |                            | MATERIAL NO.<br>887689800  | DOCUMENT NO.<br>SD887689800 | SHEET NO.<br>1 OF 2                           |                        |  |
| 1 PLACE   | ± ---                         | ± ---                                 | DRAFT WHERE APPLICABLE<br>MUST REMAIN<br>WITHIN DIMENSIONS |                            | THIS DRAWING CONTAINS INFORMATION THAT IS PROPRIETARY TO MOLEX<br>INCORPORATED AND SHOULD NOT BE USED WITHOUT WRITTEN PERMISSION |                             |   |                        |  |

7                      6                      5                      4                      3                      2                      1



WIRE DIAGRAM:

| SHIELD | SHIELD | OVERALL SHIELD | GROUND             |
|--------|--------|----------------|--------------------|
| PIN 19 | PIN 19 | PINK           | HOT PLUG DETECT    |
| PIN 18 | PIN 18 | ORANGE         | +5V POWER          |
| PIN 17 | PIN 17 | YELLOW         | DDC/CEC GROUND     |
| PIN 16 | PIN 16 | WHITE          | SDA                |
| PIN 15 | PIN 15 | RED            | SCL                |
| PIN 14 | PIN 14 | VIOLET         | RESERVED           |
| PIN 13 | PIN 13 | GRAY           | CEC                |
| PIN 12 | PIN 12 | WHITE          | TMDS CLOCK-        |
| PIN 11 | PIN 11 | BRAID          | TMDS CLOCK SHIELD  |
| PIN 10 | PIN 10 | WHITE/BLACK    | TMDS CLOCK+        |
| PIN 9  | PIN 9  | WHITE          | TMDS DATA 0-       |
| PIN 8  | PIN 8  | BRAID          | TMDS DATA 0 SHIELD |
| PIN 7  | PIN 7  | WHITE/BLUE     | TMDS DATA 0+       |
| PIN 6  | PIN 6  | WHITE          | TMDS DATA 1-       |
| PIN 5  | PIN 5  | BRAID          | TMDS DATA 1 SHIELD |
| PIN 4  | PIN 4  | WHITE/GREEN    | TMDS DATA 1+       |
| PIN 3  | PIN 3  | WHITE          | TMDS DATA 2-       |
| PIN 2  | PIN 2  | BRAID          | TMDS DATA 2 SHIELD |
| PIN 1  | PIN 1  | WHITE/RED      | TMDS DATA 2+       |
| HDMI   | HDMI   | COLOR          | CABLE FUNCTION     |

| C    | HDMI METAL CAN 5011840118          |   | 2    |
|------|------------------------------------|---|------|
| B    | HDMI HOUSING ASSY' 5011850001      |   | 2    |
| A    | HDMI SINGLE LINK CABLE (SEE TABLE) |   | 1    |
| ITEM | DESCRIPTION                        | L | QTY. |

|  |                               |  |              |                 |   |              |                        |                                      |
|--|-------------------------------|--|--------------|-----------------|---|--------------|------------------------|--------------------------------------|
| ENTER DESCRIPTION<br>EC NO: DG2005-0094<br>DRWN: JLIU13<br>CHKD: TEDDY<br>APPR: IKAN | QUALITY SYMBOLS<br>▽=0<br>▽=5 | GENERAL TOLERANCES (UNLESS SPECIFIED)                      |              | DIMENSION STYLE | SCALE   | DESIGN UNITS | THIRD ANGLE PROJECTION |                                      |
|  |                               |  |              | MM ONLY         | ---   | METRIC       |                        |                                      |
|  |                               | 4 PLACES   | ± ---        | ± ---           | DRAWN BY  | DATE         |                        | TITLE                                |
|  |                               | 3 PLACES   | ± ---        | ± ---           | JLIU13  | 2005/01/12   |                        | AWG28 HDMI TO HDMI<br>2M CABLE ASS'Y |
| 2 PLACES   | ± ---                         | ± ---  | CHECKED BY   | DATE            |   |              |                        |                                      |
| 1 PLACE  | ± ---                         | ± ---  | TEDDY        | 2005/01/12      |   |              |                        |                                      |
|  |                               | ANGULAR ± ---°   | APPROVED BY  | DATE            |   |              |                        |                                      |
|  |                               |  | BORON        | 2005/01/12      |   |              |                        |                                      |
|  |                               | DRAFT WHERE APPLICABLE<br>MUST REMAIN<br>WITHIN DIMENSIONS | MATERIAL NO. | 887689800       | DOCUMENT NO.  | SD887689800  | SHEET NO.<br>2 OF 2    |                                      |
|  |                               |  | SIZE         | A/4             | THIS DRAWING CONTAINS INFORMATION THAT IS PROPRIETARY TO MOLEX INCORPORATED AND SHOULD NOT BE USED WITHOUT WRITTEN PERMISSION |              |                        |                                      |

6                      5                      4                      3                      2                      1