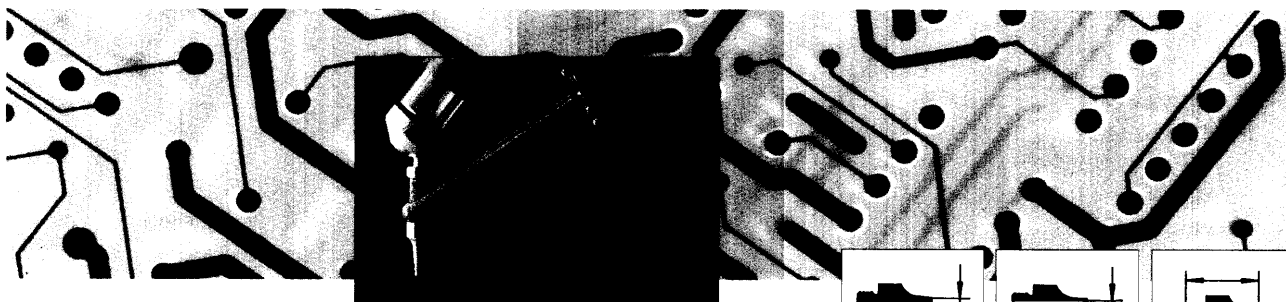
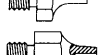
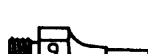
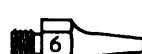
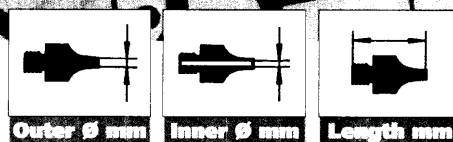


Accessories

For easier rework and repair, Weller has a large range of desoldering nozzles and soldering tips.



Desoldering nozzles for DS 80 (DS 80 UNC) and DS V80 Desoldering irons



Order No.
(order no. for nozzles
with inch thread)

Type

Outer Ø mm

Inner Ø mm

Length mm

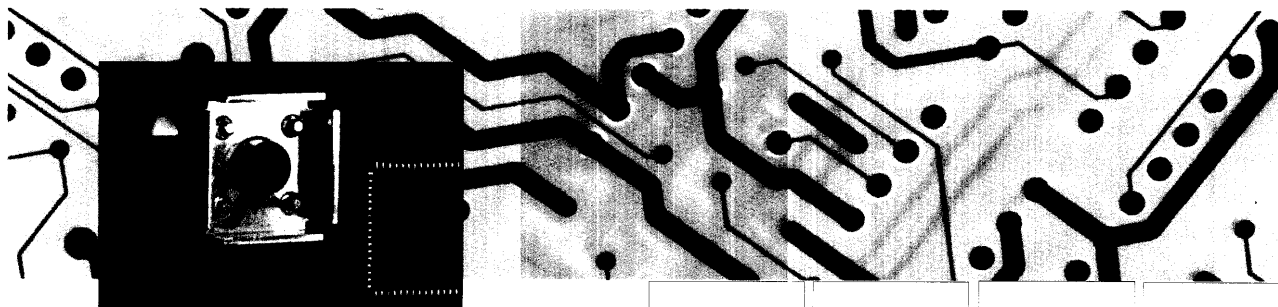
5 13 510 99 (DS 110 UNC)	DS 110	1,9	0,7	18,0
5 13 511 99 (DS 111 UNC)	DS 111	2,5	0,7	18,0
5 13 512 99 (DS 112 UNC)	DS 112	2,3	1,0	18,0
5 13 513 99 (DS 113 UNC)	DS 113	2,5	1,2	18,0
5 13 514 99 (DS 114 UNC)	DS 114	3,3	1,8	18,0
5 13 515 99 (DS 115 UNC)	DS 115	1,9	0,7	24,5
5 13 516 99 (DS 116 UNC)	DS 116	2,7	1,2	24,5
5 13 550 99 (-)	DS 117	2,9	1,5	18,0
5 13 551 99 (-)	DS 118	1,5	0,7	18,0
5 13 532 99	DS 110 HM	1,9	0,7	18,0
5 13 533 99	DS 112 HM	2,3	1,0	18,0
5 13 530 99 (-)	DS 113 HM	2,5	1,2	18,0
5 13 527 99 (-)	DS 119 Needle-tiplet for removal of solder bridges in connection with hot air pencil	1,9	0,7	26,0
5 13 552 99	DS 120 for cleaning of SMD-pads	2,5	1,1	15,5
5 24 749 99 (-)	Calibration tip	3,3	0,55	18,0
5 13 030 99	Anti-bloc paste Anti-bloc paste for desoldering nozzles where thread may stick due to oxidation and heat			

Tips for WTA 50 Tweezer

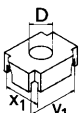
5 44 141 99	WT 1	1,0	x	11,0	5 44 144 99	WT 5	18,5	x	12,0
5 44 140 99	WT 2	3,0	x	11,0	5 44 150 99	WT 11	1,0	vertical use	
5 44 142 99	WT 3	6,0	x	11,0	5 44 151 99	WT 12	3,0	vertical use	
5 44 143 99	WT 4	12,5	x	10,0	5 44 145 99	WT 15	0,5		

CSF Accessories

for DS 80 (DS 80 UNC), DS V80 (DS V80 UNC) and DS VT80 for SMD's
chip desoldering tiplets for flat packs

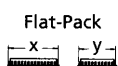


CSF-Q



x, (mm) x y, (mm)

x, > x + 0,3
y, > y + 0,3

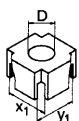


Flat-Pack

CSF-Head Order No. Adaptor Ø

x, (mm) x y, (mm)	CSF-Head Order No.	Adaptor Ø	Adaptor for DS 80 UNC, DS V80 UNC	Adaptor for DS 80, DS V80	Adaptor for DS VT80	Pushing Insert (square)
12,0 x 12,0	5 87 417 33	6	5 87 417 88	5 87 417 15	5 87 417 84	5 87 137 99
12,0 x 14,5	5 87 417 34	6	5 87 417 88	5 87 417 15	5 87 417 84	5 87 137 99
12,7 x 12,7	5 87 417 35	6	5 87 417 88	5 87 417 15	5 87 417 84	5 87 137 99
17,0 x 17,0	5 87 417 36	11	5 87 417 89	5 87 417 16	5 87 417 85	5 87 137 98
17,0 x 23,0	5 87 417 37	16	5 87 417 90	5 87 417 17	5 87 417 86	5 87 137 98
19,6 x 19,6	5 87 417 38	11	5 87 417 89	5 87 417 16	5 87 417 85	5 87 137 98

CSF-QI



12,7 x 12,7
17,8 x 17,8
20,4 x 20,4
25,4 x 25,4
30,4 x 30,4



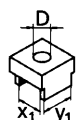
Chip Carrier



5 87 417 39
5 87 417 40
5 87 417 41
5 87 417 42
5 87 417 43

CSF-Head Order No.	Adaptor Ø	Adaptor for DS 80 UNC, DS V80 UNC	Adaptor for DS 80, DS V80	Adaptor for DS VT80	Pushing Insert (square)
5 87 417 39	6	5 87 417 88	5 87 417 15	5 87 417 84	5 87 137 99
5 87 417 40	11	5 87 417 89	5 87 417 16	5 87 417 85	5 87 137 98
5 87 417 41	16	5 87 417 90	5 87 417 17	5 87 417 86	5 87 137 98
5 87 417 42	16	5 87 417 90	5 87 417 17	5 87 417 86	5 87 137 98
5 87 417 43	16	5 87 417 90	5 87 417 17	5 87 417 86	5 87 137 98

CSF-D



5,5 x 10,0
5,8 x 10,5
6,7 x 10,0
9,3 x 13,0
9,4 x 10,0
9,8 x 18,0
10,0 x 16,0
10,5 x 16,0
10,7 x 18,0
11,0 x 26,5



SO-Case



5 87 417 23
5 87 417 24
5 87 417 25
5 87 417 26
5 87 417 27
5 87 417 28
5 87 417 29
5 87 417 30
5 87 417 31
5 87 417 32

CSF-Head Order No.	Adaptor Ø	Adaptor for DS 80 UNC, DS V80 UNC	Adaptor for DS 80, DS V80	Adaptor for DS VT80	Pushing Insert (square)
5 87 417 23	6	5 87 417 88	5 87 417 15	5 87 417 84	5 87 137 99
5 87 417 24	6	5 87 417 88	5 87 417 15	5 87 417 84	5 87 137 99
5 87 417 25	6	5 87 417 88	5 87 417 15	5 87 417 84	5 87 137 99
5 87 417 26	6	5 87 417 88	5 87 417 15	5 87 417 84	5 87 137 99
5 87 417 27	6	5 87 417 88	5 87 417 15	5 87 417 84	5 87 137 99
5 87 417 28	6	5 87 417 88	5 87 417 15	5 87 417 84	5 87 137 99
5 87 417 29	6	5 87 417 88	5 87 417 15	5 87 417 84	5 87 137 99
5 87 417 30	6	5 87 417 88	5 87 417 15	5 87 417 84	5 87 137 99
5 87 417 31	6	5 87 417 88	5 87 417 15	5 87 417 84	5 87 137 99
5 87 417 32	11	5 87 417 89	5 87 417 16	5 87 417 85	5 87 137 98

CSF-DI



SOJ-Case

9,0 x 18,0

5 87 417 44

CSF-Head Order No.	Adaptor Ø	Adaptor for DS 80 UNC, DS V80 UNC	Adaptor for DS 80, DS V80	Adaptor for DS VT80	Pushing Insert (square)
5 87 417 44	6	5 87 417 88	5 87 417 15	5 87 417 84	5 87 137 99