

# SEALING BOOTS FOR SWITCHES

- Prevent dust, sand and water from getting into switches.
- On toggle versions, also prevent ice from blocking lever action.
- Compatible with frontal sealing options (K and X408).
- Available in a wide range of colours.
- A sealing ring or washer is standard supplied with each boot.

## MATERIALS AND SPECIFICATIONS

- Boot material : neoprene or silicone (see comparative advantages below)
- Nut material : nickel plated or matt black
- Operating temperature :
  - neoprene boots : -20°C to +50°C
  - silicone boots : -40°C to + 85°C

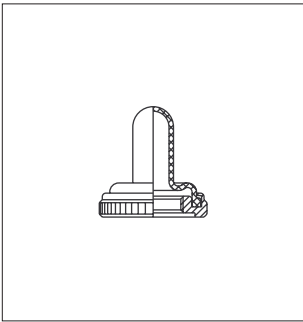
COMPARATIVE ADVANTAGES	TEMPERATURE RANGE		ELASTICITY	MECHANICAL RESISTANCE
	LOW	HIGH		
Silicone	++	++	++	-
Neoprene	-	+	-	++

++ : excellent, + : good, - : poor

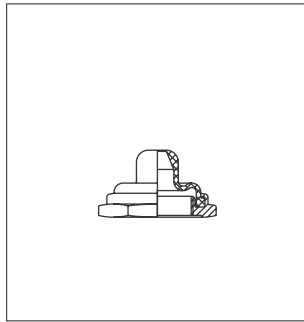
## DIFFERENT TYPES OF BOOTS

\* Colour options available

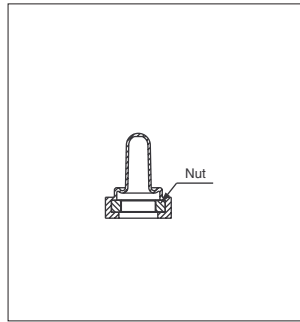
Full-toggle (standard) \*



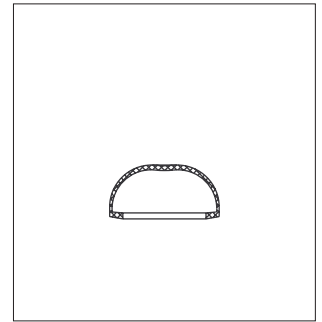
Half-toggle \*



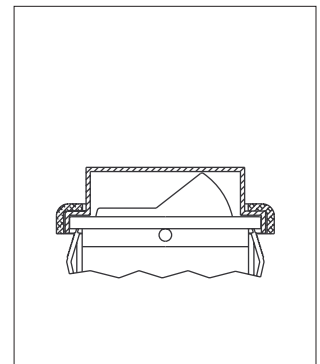
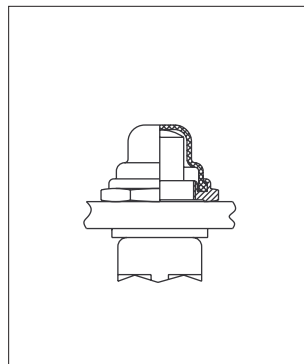
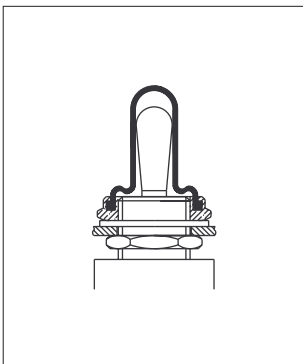
Two-part (no metal parts accessible) \*



For double sealing



## EXAMPLES OF MOUNTING



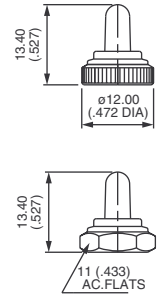
# SEALING BOOTS

## for toggle switches

### For bushing $\varnothing 6 \times 0.75$ (.236 x 0.75) - 5500 series



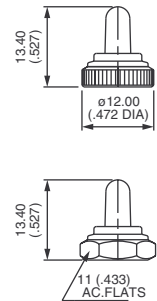
NUT	FULL-TOGGLE SILICONE BOOTS			
	Black	Red	Green	White
<b>Knurled</b> Nickel plated	U1341	U1341-6	U1341-3	U1341-7
<b>Knurled</b> Matt black	U1343	U1343-6	U1343-3	U1343-7
<b>Hex</b> Nickel plated	U1302	U1302-6	U1302-3	U1302-7
<b>Hex</b> Matt black	U1304	U1304-6	U1304-3	U1304-7



### For bushing $\varnothing 6,35-40NS$ (1/4-40UNS) - 5000 and 11000 series



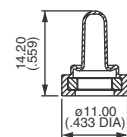
NUT	FULL-TOGGLE SILICONE BOOTS			
	Black	Red	Green	White
<b>Knurled</b> Nickel plated	U1331	U1331-6	U1331-3	U1331-7
<b>Knurled</b> Matt black	U1333	U1333-6	U1333-3	U1333-7
<b>Hex</b> Nickel plated	U1229	U1229-6	U1229-3	U1229-7
<b>Hex</b> Matt black	U1231	U1231-6	U1231-3	U1231-7



### For bushing $\varnothing 6,35-40NS$ (1/4-40UNS) - 5000 and 11000 series



NUT	SILICONE BOOTS SUPPLIED AS 2 SEPARATE PARTS			
	Black	Red	Green	White
	U5149	U5149-6	U5149-3	U5149-7

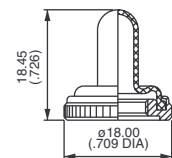


Once the boot is mounted onto the panel, no switch metal part is accessible any more.

### For bushing $\varnothing 10 \times 0.75$ (.393 x 0.75) - 10600 series



KNURLED NUT	FULL-TOGGLE SILICONE BOOTS			
	Black	Red	Green	White
Nickel plated	U1612	U1612-6	U1612-3	U1612-7
Matt black	U1614	U1614-6	U1614-3	U1614-7



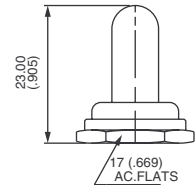
# SEALING BOOTS

## for toggle switches

For bushing Ø 11,9-32 NS (15/32-32NS) - 12000, 3500 and 6000 series



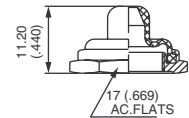
HEX NUT	FULL-TOGGLE SILICONE BOOTS			
	Black	Red	Green	White
Nickel plated	<b>U1031</b>	<b>U1031-6</b>	<b>U1031-3</b>	<b>U1031-7</b>
Matt black	<b>U1024</b>	<b>U1024-6</b>	<b>U1024-3</b>	<b>U1024-7</b>



For bushing Ø 11,9-32 NS (15/32-32NS) - 12000, 3500 and 6000 series



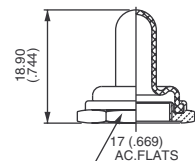
HEX NUT	HALF-TOGGLE SILICONE BOOTS			
	Black	Red	Green	White
Nickel plated	<b>U1600</b>	<b>U1600-6</b>	<b>U1600-3</b>	<b>U1600-7</b>
Matt black	<b>U1602</b>	<b>U1602-6</b>	<b>U1602-3</b>	<b>U1602-7</b>



For bushing Ø12 x 0.75 SI (.472x.075 IS) - 4450, 4650 and 1600 series



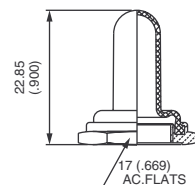
HEX NUT	FULL-TOGGLE BLACK NEOPRENE BOOTS
Nickel plated	<b>U09</b>
Matt black	<b>U223</b>



For bushing Ø 12 x 0.75 SI (.472x.075 IS) - 400, 500, 600H, 6-600H, 600SH, 660, 1000, 1500 and 3600



HEX NUT	FULL-TOGGLE SILICONE BOOTS			
	Black	Red	Green	White
Nickel plated	<b>U1565</b>	<b>U1565-6</b>	<b>U1565-3</b>	<b>U1565-7</b>
Matt black	<b>U1567</b>	<b>U1567-6</b>	<b>U1567-3</b>	<b>U1567-7</b>
FULL-TOGGLE BLACK NEOPRENE BOOTS				
Nickel plated	<b>U851</b>			
Matt black	<b>U853</b>			



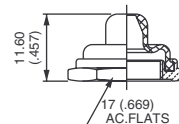
# SEALING BOOTS

## for toggle switches - for pushbutton switches

For bushing  $\varnothing$  12 x 0.75 SI (.472x.075 IS) - 400, 500, 600H, 6-600H, 660, 1000 and 3600 series



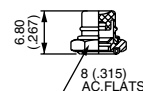
HEX NUT	HALF-TOGGLE SILICONE BOOTS			
	Black	Red	Green	White
Nickel plated	<b>U1151</b>	<b>U1151-6</b>	<b>U1151-3</b>	<b>U1151-7</b>
Matt black	<b>U1153</b>	<b>U1153-6</b>	<b>U1153-3</b>	<b>U1153-7</b>
	HALF-TOGGLE BLACK NEOPRENE BOOTS			
Nickel plated	<b>U598</b>			
Matt black	<b>U600</b>			



For bushing  $\varnothing$  4 x 0.70 (.157 x 0.70) - 9500 series



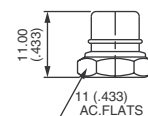
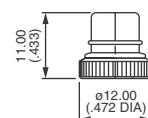
HEX NUT	PUSHBUTTON SILICONE BOOTS			
	Black	Red	Green	White
Nickel plated	<b>U1829</b>	<b>U1829-6</b>	<b>U1829-3</b>	<b>U1829-7</b>
Matt black	<b>U1831</b>	<b>U1831-6</b>	<b>U1831-3</b>	<b>U1831-7</b>



For bushing  $\varnothing$  6,35-40NS (1/4-40UNS) - 18000, 9000 and 13000 series



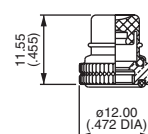
NUT	PUSHBUTTON SILICONE BOOTS			
	Black	Red	Green	White
<b>Knurled</b> Nickel plated	<b>U1401</b>	<b>U1401-6</b>	<b>U1401-3</b>	<b>U1401-7</b>
<b>Knurled</b> Matt black	<b>U1403</b>	<b>U1403-6</b>	<b>U1403-3</b>	<b>U1403-7</b>
<b>Hex</b> Nickel plated	<b>U1318</b>	<b>U1318-6</b>	<b>U1318-3</b>	<b>U1318-7</b>
<b>Hex</b> Matt black	<b>U1320</b>	<b>U1320-6</b>	<b>U1320-3</b>	<b>U1320-7</b>



For bushing  $\varnothing$  6,35-40NS (1/4-40 UNS) - 8000 series



KNURLED NUT	PUSHBUTTON SILICONE BOOTS			
	Black	Red	Green	White
Nickel plated	<b>U4301</b>	<b>U4301-6</b>	<b>U4301-3</b>	<b>U4301-7</b>



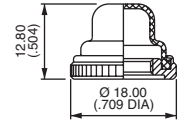
# SEALING BOOTS

## for pushbutton switches

For bushing  $\varnothing 10 \times 0.75$  (.393 x 0.75) - 10400 series



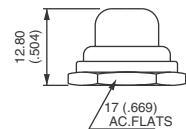
KNURLED NUT	PUSHBUTTON SILICONE BOOTS			
	Black	Red	Green	White
Nickel plated	<b>U1624</b>	<b>U1624-6</b>	<b>U1624-3</b>	<b>U1624-7</b>
Matt black	<b>U1626</b>	<b>U1626-6</b>	<b>U1626-3</b>	<b>U1626-7</b>



For bushing  $\varnothing 11,9-32$  NS (15/32-32UNS) - 13000X778 and 13000X768 series



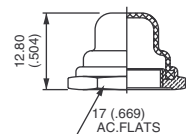
HEX NUT	PUSHBUTTON SILICONE BOOTS			
	Black	Red	Green	White
Nickel plated	<b>U589</b>	<b>U589-6</b>	<b>U589-3</b>	<b>U589-7</b>
Matt black	<b>U590</b>	<b>U590-6</b>	<b>U590-3</b>	<b>U590-7</b>



For bushing  $\varnothing 12 \times 0.75$  SI (.472x.075 IS) - 1200, 4700 and 4800 series



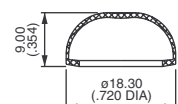
HEX NUT	PUSHBUTTON SILICONE BOOTS			
	Black	Red	Green	White
Nickel plated	<b>U1654</b>	<b>U1654-6</b>	<b>U1654-3</b>	<b>U1654-7</b>
Matt black	<b>U1656</b>	<b>U1656-6</b>	<b>U1656-3</b>	<b>U1656-7</b>
	PUSHBUTTON BLACK NEOPRENE BOOTS			
Nickel plated	<b>U31</b>			
Matt black	<b>U225</b>			
Chrome plated	<b>U224</b>			



For double sealing on IP series and IB-IS series



SILICONE BOOT	
Transparent	<b>U5125</b>
Black	<b>U5125-2</b>



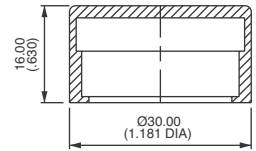
# SEALING BOOTS

for pushbutton switches - for rocker switches

## For external sealing on A02 series



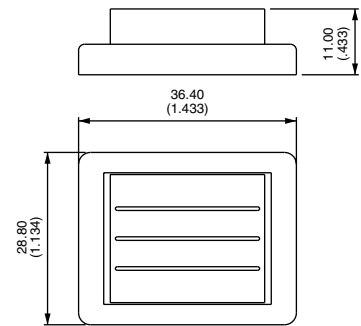
SILICONE BOOT
<b>A02WPC</b>



## For 2600 series



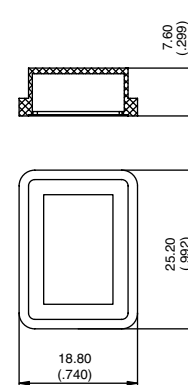
TRANSPARENT SILICONE BOOT
<b>U2150</b>



## For FM series



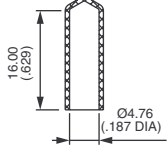
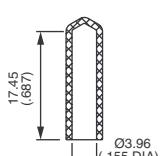
TRANSPARENT PVC BOOT
<b>U5720</b>



# CAPS FOR PCB PROCESSING

## Miniature switches

Available on models with plain bushing.  
 Supplied mounted on the switches or separately.  
 Provide **additional protection** during PCB processing.

	SERIES	MATERIAL	PART NUMBER
 <p>Technical drawing of Series S cap showing a height of 16.00 (.629) and a diameter of Ø4.76 (.187 DIA).</p>	S	Vinyl	<b>U3012</b>
 <p>Technical drawing of Series TP cap showing a height of 17.45 (.687) and a diameter of Ø3.96 (.155 DIA).</p>	TP	Vinyl	<b>U3502</b>