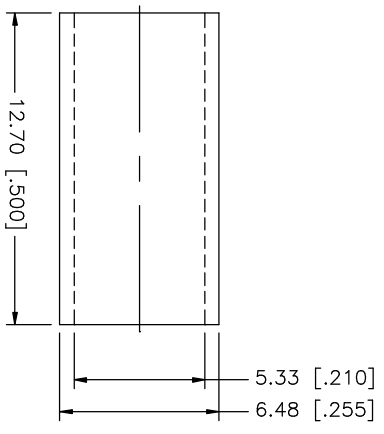
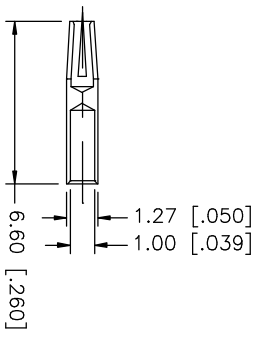
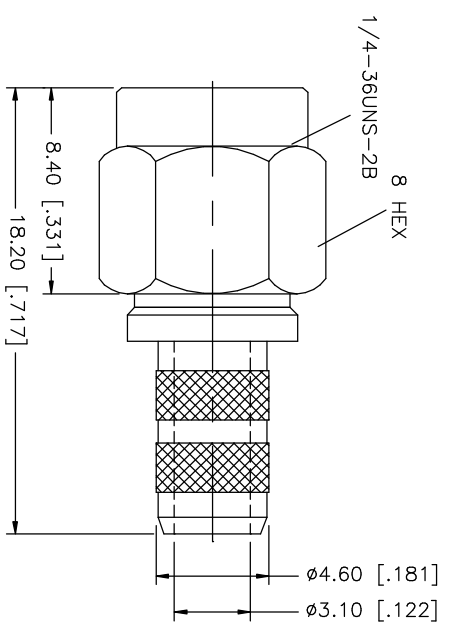
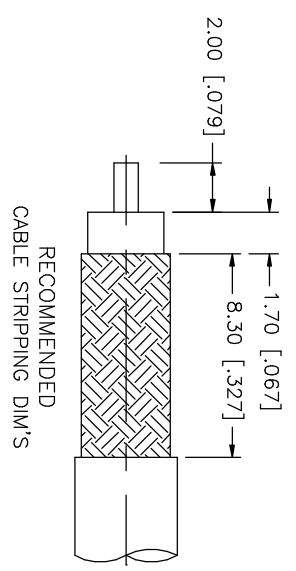


REV.	DATE	DESCRIPTION
NC	06/05/03	UPDATE DRAWING FORMAT



NOTE:
1. CRIMPED FERRULE
HEX CRIMP SIZE .213"
2. CONTACT PIN TO SOLDER

QTY	FINISH	MATERIAL	DESCRIPTION
1	GOLD	COPPER	FERRULE
1	GOLD	BER, COPPER	CONTACT PIN
1	GOLD	TEFLON	INSULATOR
1	GOLD	BRASS	BODY

APPROVALS	DATE
DRAWN G.R.S.	06/05/03
CHECKED	
ISSUED	
SHEET 1 OF 1	

<p>UNLESS OTHERWISE SPECIFIED DIMENSIONS ARE IN MILLIMETERS DIMENSIONS IN [] ARE IN INCHES AND FOR CUSTOMER REFERENCE ONLY.</p> <p>TOLERANCES FOR MILLIMETERS ARE: 0.5 - 8mm ± 0.20mm 8 - 30mm ± 0.40mm 30 - 120mm ± 0.50mm</p> <p>TOLERANCES FOR INCHES ARE: .020 - .315 = ± 0.007" .315 - 1.180 = ± 0.015" 1.180 - 4.724 = ± 0.020"</p>	
DO NOT SCALE DRAWING	

CAD FILE	C:/132/132113RP.DWG
DWG. NO.	132113RP.DWG
REV.	NC
SIZE	A
SCALE	NA

Amphenol Connex

PART DESCRIPTION
SMA REVERSE POLARITY CRIMP PLUG
(FOR RG-58C/U, 58/U CABLE)

PART NO. 132113RP