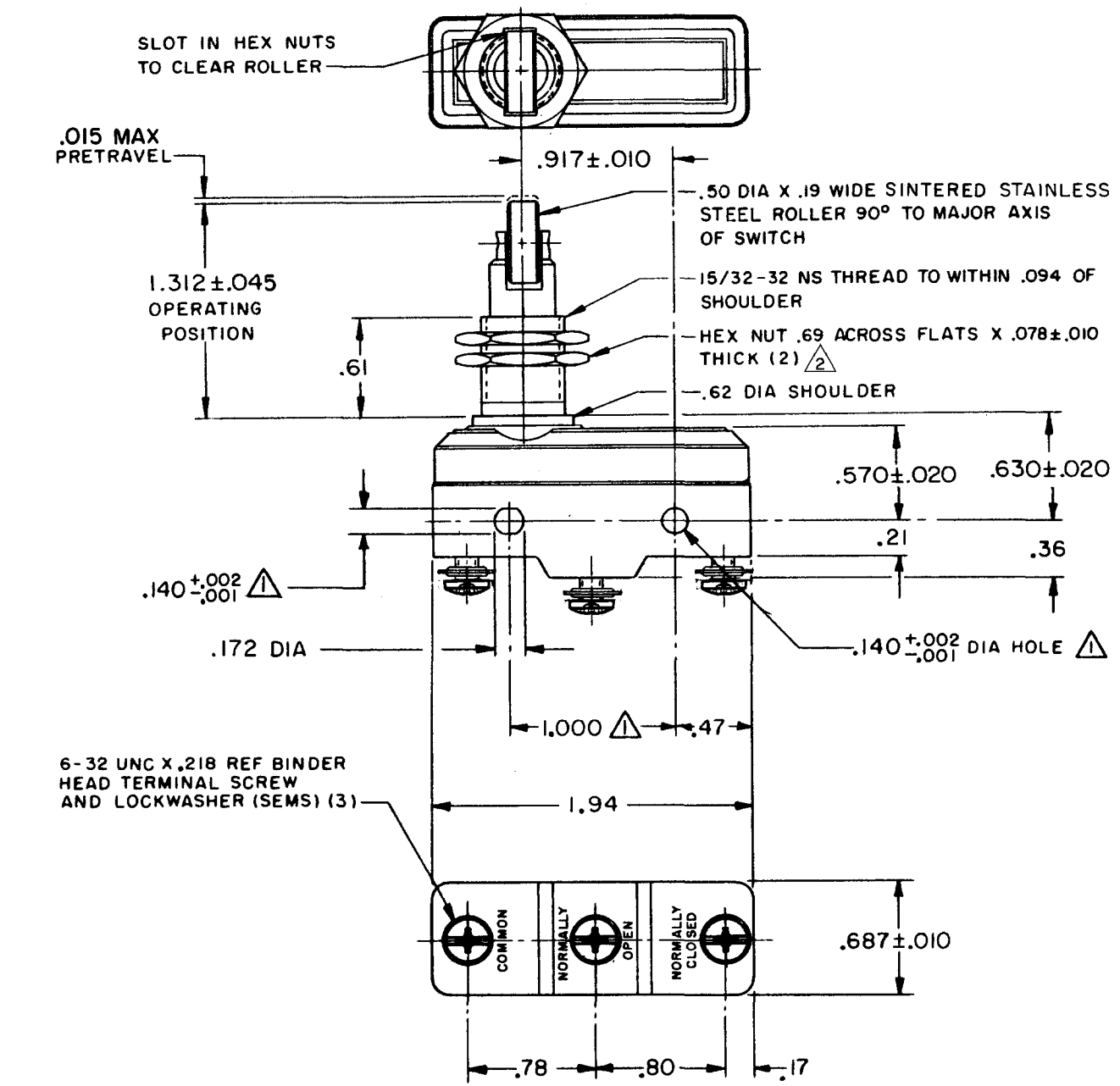


BZ-2RQ181T
 PAGE 1 OF 1
M
 DRAWING NUMBER
8
 ISSUE
 REVISIONS
 A CO17410
 RER 29 JUL 64
 B CO26285
 D L F 21 AUG 69
 C CO-59351-D
 JWB 18 JUL 91
 D CO-77589
 JAL 30 MAR 94
 E CO-77426-B
 DLT 29 JUN 94
 F CO-82133
 CSL 1 AUG 96
 G CO93346
 DLT 11 SEP 98
 DRAWN
 RER 29 JUL 64
 FC-90376



6-32 UNC X .218 REF BINDER HEAD TERMINAL SCREW AND LOCKWASHER (SEMS) (3)

- NOTES**
- ① MOUNTING HOLES WILL ACCEPT PINS OR SCREWS OF .139 MAX DIA ON 1.000 ± .002 CENTERS
 - ② HARDWARE FURNISHED UNASSEMBLED

THIS DRAWING COVERS A PROPRIETARY ITEM AND IS THE PROPERTY OF MICRO SWITCH, A DIVISION OF HONEYWELL. THIS DRAWING IS NOT TO BE COPIED OR USED WITHOUT THE APPROVAL OF MICRO SWITCH.

CHARACTERISTICS	ELECTRICAL DATA	SCALE FULL
OPERATING FORCE----- 9-13 OZ	CONTACT ARRANGEMENT S P D T	DO NOT SCALE PRINT
RELEASE FORCE----- 4 OZ MIN	UNDERWRITERS' LAB. INC. LISTED RATING	UNLESS OTHERWISE NOTED
DIFFERENTIAL TRAVEL--- .0004-.0020	- L96- 15 A-125, 250, OR 480 VAC	DIMENSIONS ARE IN INCHES
OVERTRAVEL----- .140 MIN	1/2 A-125 VDC; 1/4 A-250 VDC	TOLERANCES ARE:
	1/8 HP-125 VAC; 1/4 HP-250 VAC	ONE PLACE (.0) ±.030
	-L288-	TWO PLACE (.00) ±.015
	-L299- 16A 250V ~ T85 5E4	THREE PLACE (.000) ±.005
	-L306-	ANGLES ±
		WEIGHT .14 LB MAX