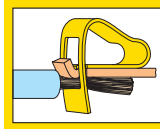
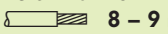
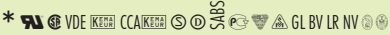
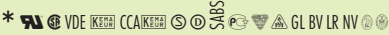
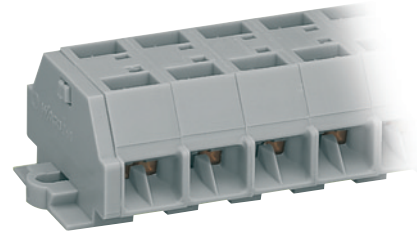
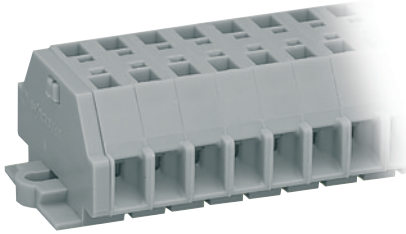


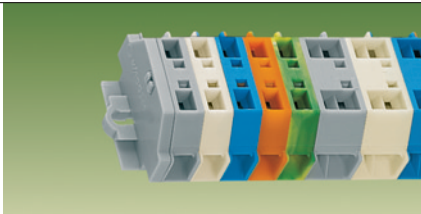
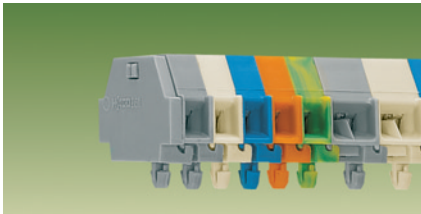
# Terminal Strips with Fixing Flanges or Snap-in Mounting Feet 2.5 mm<sup>2</sup> / AWG 14, Series 261



<b>Test plug modules</b> see page 10.28	<b>0.08 – 2.5 mm<sup>2</sup></b> 500 V/6 kV/3 ① 24 A	AWG 28 – 14 300/600 V, 15/5 A ② 300/600 V, 20/5 A ③	<b>2 x 0.08 – 2.5 mm<sup>2</sup></b> 500 V/6 kV/3 ① 24 A	2 x AWG 28 – 14 300/600 V, 15/5 A ② 300/600 V, 20/5 A ③
	Pole width 6 mm / 0.236 in  8 – 9 mm / 0.33 in		Pole width 10 mm / 0.394 in  8 – 9 mm / 0.33 in	
* 		* 		



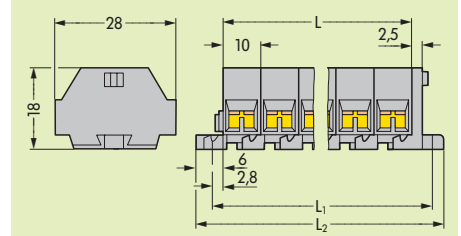
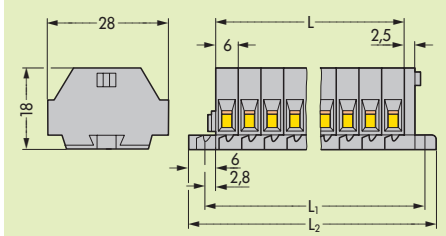
- ① 500 V = rated voltage  
6 kV = rated surge voltage  
3 = pollution degree  
(see also section 15)
- ② Suitable for EEx i applications with blue insulating housings
- ④ For longer strips and/or assemblies of different colors, please contact factory

Description	No. of poles	Item No.	Pack.-unit pcs	No. of poles	Item No.	Pack.-unit pcs
 <p><b>Terminal strips with fixing flanges,</b> for screw fixing or similar methods, fixing hole diameter 3.2 mm (with mounting adapter 209-123 also for DIN 35 rail)</p>	<b>2-conductor terminal strips with fixing flanges, grey</b>			<b>4-conductor terminal strips with fixing flanges, grey</b>		
	2	261-102	100	2	261-202	100
	3	261-103	100	3	261-203	100
	4	261-104	100	4	261-204	100
	5	261-105	100	5	261-205	100
	6	261-106	50	6	261-206	50
	7	261-107	50	7	261-207	50
	8	261-108	50	8	261-208	50
	9	261-109	50	9	261-209	50
	10	261-110	25	10	261-210	25
	11	261-111	25	11	261-211	25
	12 ④	261-112	25	12 ④	261-212	25
 <p><b>Terminal strips with snap-in mounting feet,</b> for plate thickness 0.6 – 1.2 mm, fixing hole diameter 3.5 mm (fits aluminum rail 210-154 or with mounting adapter 209-120 for DIN 35 rail)</p>	<b>2-conductor terminal strips with snap-in mounting feet, grey</b>			<b>4-conductor terminal strips with snap-in mounting feet, grey</b>		
	2	261-152	100	2	261-252	100
	3	261-153	100	3	261-253	100
	4	261-154	100	4	261-254	100
	5	261-155	100	5	261-255	100
	6	261-156	50	6	261-256	50
	7	261-157	50	7	261-257	50
	8	261-158	50	8	261-258	50
	9	261-159	50	9	261-259	50
	10	261-160	25	10	261-260	25
	11	261-161	25	11	261-261	25
	12 ④	261-162	25	12 ④	261-262	25

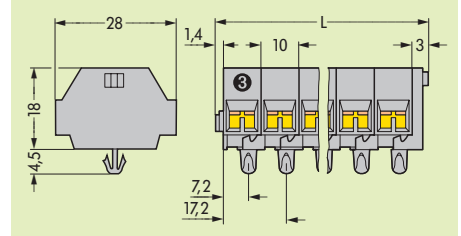
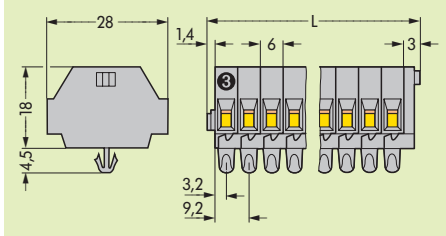
## Dimensions for modular terminal blocks and terminal strips (in mm)

Modular terminal blocks and terminal strips with fixing flanges  
 L = No. of poles x pole width  
 L<sub>1</sub> = L + 8.1 mm  
 L<sub>2</sub> = L + 14.5 mm

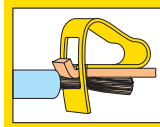
Additional item-Nos. for colored terminal strips  
 blue .../000-006 ②



Modular terminal blocks and terminal strips with snap-in mounting feet  
 ④ End terminal block; see page 10.20  
 L = (No. of poles x pole width) + 4.4 mm

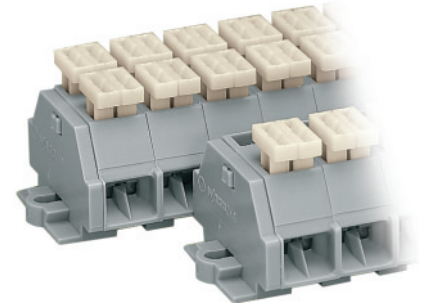
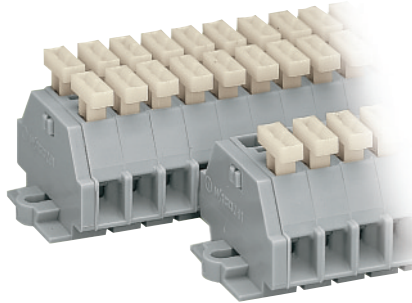


# Terminal Strips with Push Buttons on One or Both Sides, with Fixing Flanges or Snap-in Mounting Feet 2.5 mm<sup>2</sup> / AWG 14, Series 261



<p><b>0.08 – 2.5 mm<sup>2</sup></b>   <b>AWG 28 – 14</b>  <b>500 V/6 kV/3 ①</b>   <b>300/600 V, 15/5 A ④</b>  <b>24 A</b></p> <p><b>Pole width 6 mm / 0.236 in</b>  <b>8 – 9 mm / 0.33 in</b></p> <p><small>* CCA ② ③ ④ ⑤ LR NV ⑥</small></p>	<p><b>2 x 0.08 – 2.5 mm<sup>2</sup></b>   <b>2 x AWG 28 – 14</b>  <b>500 V/6 kV/3 ①</b>   <b>300/600 V, 15/5 A ④</b>  <b>24 A</b></p> <p><b>Pole width 10 mm / 0.394 in</b>  <b>8 – 9 mm / 0.33 in</b></p> <p><small>* CCA ② ③ ④ ⑤ LR NV ⑥</small></p>
---	--

- ① 500 V = rated voltage  
6 kV = rated surge voltage  
3 = pollution degree  
(see also section 15)
- ② Suitable for EEx i applications with blue insulating housings
- ④ For longer strips and/or assemblies of different colors, please contact factory
- ⑤ For item No. and packing-unit, see page 10.21



Description	No. of poles	Add. item No. for	No. of poles	Add. item No. for
	<b>2-conductor terminal strips with fixing flanges,</b> for screw fixing or similar methods, fixing hole diameter 3.2 mm (with mounting adapter 209-123 also for DIN 35 rail) <b>with push buttons on one side, grey</b>		<b>4-conductor terminal strips with fixing flanges,</b> for screw fixing or similar methods, fixing hole diameter 3.2 mm (with mounting adapter 209-123 also for DIN 35 rail) <b>with push buttons on one side, grey</b>	
	2 – 12 ④	<b>261-.../331-000 ⑤</b>	2 – 12 ④	<b>261-.../332-000 ⑤</b>
	<b>with push buttons on both sides, grey</b>		<b>with push buttons on both sides, grey</b>	
	2 – 12 ④	<b>261-.../341-000 ⑤</b>	2 – 12 ④	<b>261-.../342-000 ⑤</b>
	<b>2-conductor terminal strips with snap-in mounting feet,</b> for plate thickness 0.6 – 1.2 mm, fixing hole diameter 3.5 mm (fits aluminum rail 210-154 or with mounting adapter 209-120 for DIN 35 rail) <b>with push buttons on one side, grey</b>		<b>4-conductor terminal strips with snap-in mounting feet,</b> for plate thickness 0.6 – 1.2 mm, fixing hole diameter 3.5 mm (fits aluminum rail 210-154 or with mounting adapter 209-120 for DIN 35 rail) <b>with push buttons on one side, grey</b>	
	2 – 12 ④	<b>261-.../331-000 ⑤</b>	2 – 12 ④	<b>261-.../332-000 ⑤</b>
	<b>with push buttons on both sides, grey</b>		<b>with push buttons on both sides, grey</b>	
	2 – 12 ④	<b>261-.../341-000 ⑤</b>	2 – 12 ④	<b>261-.../342-000 ⑤</b>

Modular terminal blocks and terminal strips with fixing flanges

L = No. of poles x pole width  
 L<sub>1</sub> = L + 8.1 mm  
 L<sub>2</sub> = L + 14.5 mm

Additional item-Nos. for colored terminal strips  
 blue .../000-006 ②

Modular terminal blocks and terminal strips with snap-in mounting feet

③ End terminal block; see page 10.22

L = (No. of poles x pole width) + 4.4 mm

