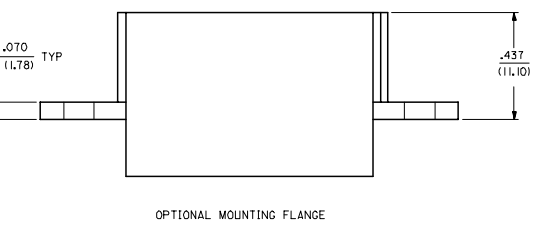
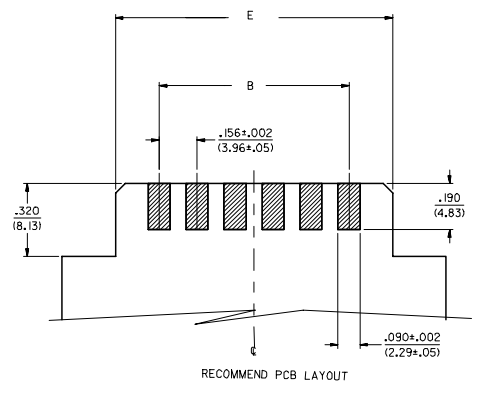
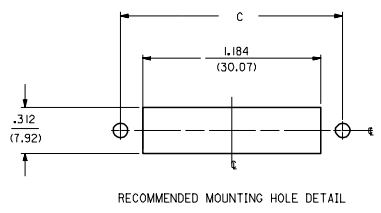
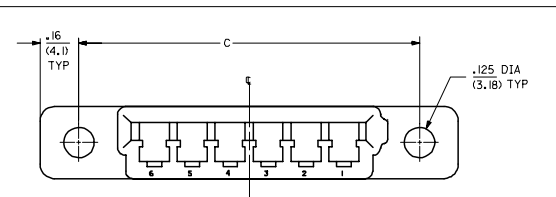
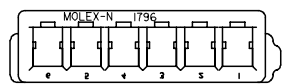


CKTS	D	B	C	E	WITHOUT FLANGE		WITH MOUNTING FLANGE	
					PART NO.	ENG NO.	PART NO.	ENG NO.
6	.966/.981 (24.54/24.92)	.780±.004 (19.81±.10)	1.392 (35.96)	.946±.005 (24.03±.13)	09-01-1061	1796-06	09-01-2061	1796-061
12	1.902/1.917 (48.31/48.69)	1.76±.006 (43.59±0.15)	2.328 (59.13)	1.882±.005 (47.80±0.13)	09-01-1121	1796-12	09-01-2121	1796-121

- NOTES:
1. MATERIAL: NYLON, UL94V-2, COLOR: WHITE
 2. FINISH: N/A
 3. PRODUCT SPECIFICATION: PS-08-50
 4. PARTS ARE BULK PACKAGED
 5. DIMENSIONS GIVEN ACROSS CENTERLINES ARE SYMMETRICAL ABOUT THOSE CENTERLINES WITHIN HALF THE TOTAL TOLERANCE.
 6. FOR USE WITH TERMINAL NUMBER 1797.
 7. RECOMMENDED PCB THICKNESS: .062±.005 / (1.57±0.13).
 8. PARTS CONFORM TO CLASS B REQUIREMENTS OF COSMETIC SPECIFICATION PS-45499-002.



ADD NOTES EC NO: UCP2008-0938 DRAWN BY: 2007/10/25 CHECKED BY: CHKLSCHMIDT 2007/10/26 APPROVED BY: APPRESMITH 2007/10/29	QUALITY SYMBOLS ▽=0 ▽=0	GENERAL TOLERANCES (UNLESS SPECIFIED)		DIMENSION STYLE IN/MM		SCALE: ---	DESIGN UNITS: INCH	THIRD ANGLE PROJECTION
		4 PLACES ± --- ± ---	DRAWN BY: SAMIEC DATE: 1994/07/05	TITLE: EDGE CARD CONNECTOR .156/(3.96) CENTERS 1796 SERIES DWG.				
		3 PLACES ± --- ± .010	CHECKED BY: PATEL DATE: 1994/07/05	MOLEX INCORPORATED				
		2 PLACES ± 0.25 ± .015 1 PLACE ± 0.38 ± --- ANGULAR ±1/2°	APPROVED BY: LENZ DATE: 1994/07/05	SD-1796				
DRAFT WHERE APPLICABLE MUST REMAIN WITHIN DIMENSIONS		SEE CHART		MATERIAL NO. DOCUMENT NO.		SHEET NO. 1 OF 1		
THIS DRAWING CONTAINS INFORMATION THAT IS PROPRIETARY TO MOLEX INCORPORATED AND SHOULD NOT BE USED WITHOUT WRITTEN PERMISSION								