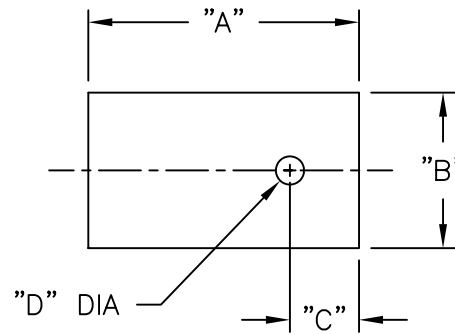


PART NO.	"A"	"B"	"C"	"D"
TO-220-68	1.13 (28.7)	.63 (16.0)	.20 (5.1)	.145 (3.7)
TO-218-70	1.41 (35.8)	.81 (20.6)	.36 (9.1)	.147 (3.7)



NOTES:

1. THICKNESS: .007 (0.18)
2. MATERIAL: SILICON RUBBER AND FIBERGLASS COMPOSITE
3. COLOR: GREY
4. STANDARD PACK: 500/BAG

A	CHANGED FILE NO.	SM 10.30.02
REV	DESCRIPTION	ENGR DATE

TITLE: TO-220 TRANSISTOR CASE INSULATOR						DWG IN IN(MM)	
TOLERANCES UNLESS NOTED .XX=±.010 .XXX=±.005 FRAC=±1/64 ANG=±1°	FILE # TO SERIES	DWN: P.B.	APP:	FINAL			
	MAT'L: SEE NOTES	DT: 03-23-94	DT:	PART #		PRINT TYPE	
	RE: RICHCO, INC.	RICHCO INC. PO BOX 804238, CHICAGO, 60680 (773) 539-4060		SEE TABLE		CA	