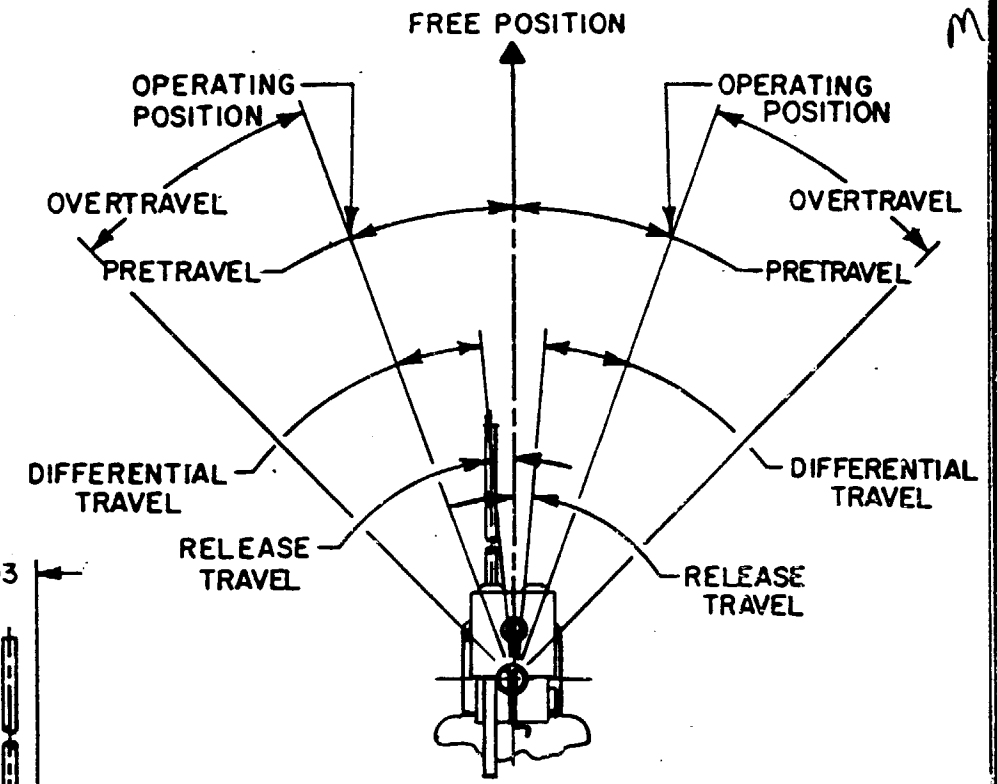
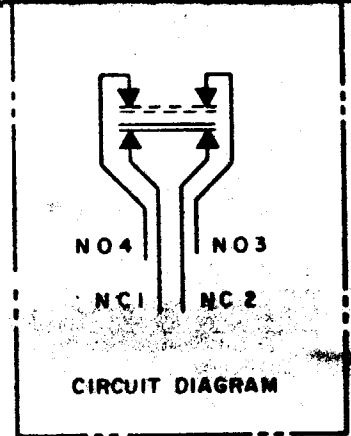


**MICRO SWITCH**  
 FREEPORT, ILLINOIS, U.S.A.  
 A DIVISION OF HONEYWELL  
 FED. MFG. CODE 91920

**SWITCH-ENCLOSED**

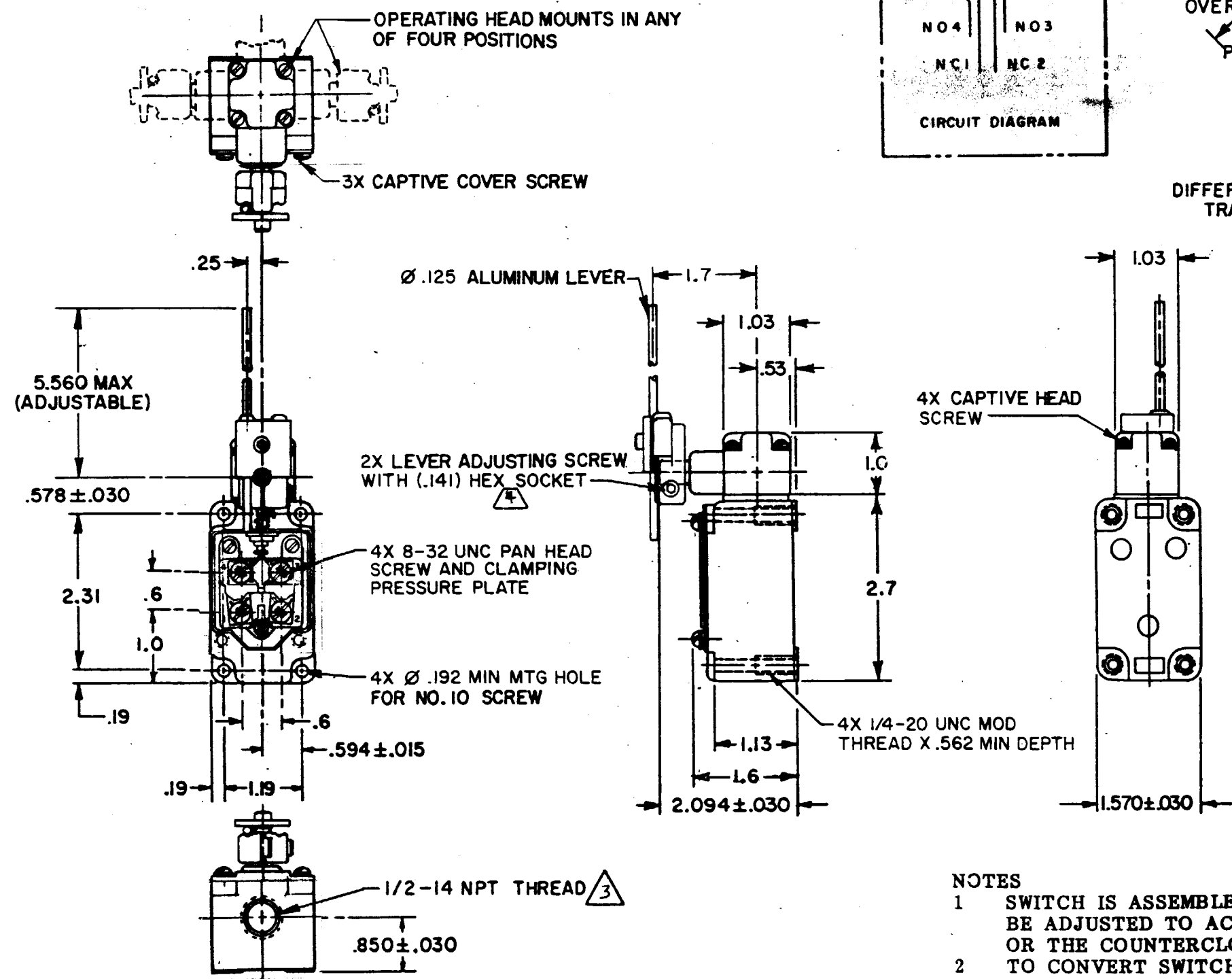
CATALOG LISTING  
**1LS53**



REPLACES  
**1LS53**  
 DRAWING NUMBER  
**M**  
 ISSUE  
**15**

REVISIONS  
 A 177031  
 J D B  
 22 DEC 93

RELEASE NO.  
 CHECK  
 CHECK  
 DRAWN  
 CHECK  
 J D B  
 06 JAN 94  
 24 JAN 94  
 94



THIS DRAWING COVERS A PROPRIETARY ITEM AND IS THE PROPERTY OF MICRO SWITCH, A DIVISION OF MINNEAPOLIS-HONEYWELL REGULATOR CO. THIS DRAWING IS NOT TO BE COPIED OR USED WITHOUT THE APPROVAL OF MICRO SWITCH.

CHARACTERISTICS	ELECTRICAL DATA	SCALE 1/2 TO 1
OPERATING TORQUE --- 1.0 IN-LB MAX	CONTACT ARRANGEMENT (SEE CIRCUIT DIAGRAM)	DO NOT SCALE PRINT
FULL OVERTRAVEL TORQUE --- 1.4 IN-LB MAX	10A - 120, 240 OR 480 VAC 1/4 HP - 120 VAC; 1/2 HP - 240 VAC PILOT DUTY: 600 VAC MAX	UNLESS OTHERWISE NOTED DIMENSIONS ARE IN INCHES <b>TOLERANCES ARE:</b> ONE PLACE (.0) ± .030 TWO PLACE (.00) ± .015 THREE PLACE (.000) ± .008 ANGLES ±
RELEASE TORQUE --- .18 IN-LB MIN		
PRETRAVEL --- 5° MAX		
OVERTRAVEL --- 30° MIN		
RELEASE TRAVEL --- 1/2 MIN		
SWITCH-BASIC REPLACEMENT --- 2 MNB		

**NOTES**

- 1 SWITCH IS ASSEMBLED FOR ACTUATION IN BOTH DIRECTIONS BUT MAY BE ADJUSTED TO ACTUATE IN EITHER THE CLOCKWISE DIRECTION ONLY OR THE COUNTERCLOCKWISE DIRECTION ONLY
- 2 TO CONVERT SWITCH FOR ACTUATION IN EITHER THE CLOCKWISE OR COUNTERCLOCKWISE DIRECTION ONLY, REMOVE ACTUATOR HEAD AND ROTATE THE NOTCHED PLUNGER 90° TO THE RIGHT FOR CLOCKWISE ACTUATION OR 90° TO THE LEFT FOR COUNTERCLOCKWISE ACTUATION



<sup>3</sup> SEAL TO BE FURNISHED BY USER  
<sup>4</sup> LEVER MAY BE LOCKED IN ANY POSITION THRU 360°  
 LEVER FURNISHED UNASSEMBLED IN UNIT PACKING BOX