

**MENTOR**

324 5275 (1278 series)

Bargraph Anzeige  
4-, 10-, 20-fach

Bargraph display  
4, 10, 20 fold

Technische Daten	Technical Data	
Blende	Diaphragme	PC schwarz / PC black UL94
LL-Werkstoff	LL-Material	PC glasklar / PC clear UL94
Umgebungstemperatur	Ambient Temperature	-40°C ... +85°C
ESD-Schutz	ESD-Protection	8 kV

**CTL**  
COMPONENTS  
plc

FROM

Sanj Pankhania HND Elec Eng. EPI  
Product Manager - Electronics

and  
line  
mit  
fen  
er-  
ch-

The light guide system is a 2.54 mm pitch and is available as a 4-fold, 10-fold and 20-fold display. A screen is integrated to prevent irradiation to the adjacent displays, so that also mixed colours can be used. The light guide is held in place on the printed board via press-in lugs. The light guide is used in conjunction with SMD LEDs. The light guide system is suitable for bargraph displays of minimum 4 displays. Coloured lightguide on request.

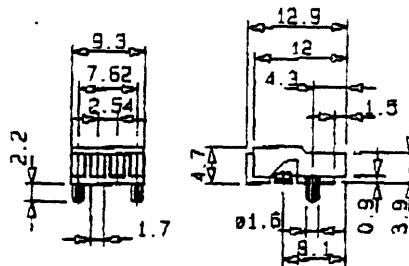
CTL Components plc  
Falcon House, 19 Deer Park Road  
London SW19 3UX  
Telephone: 020 8545 8700 (Direct 8719)  
Mobile: 07710 591 379  
Fax: 020 8540 0034  
E-mail: info@ctl-components.com  
Internet: www.ctl-components.com



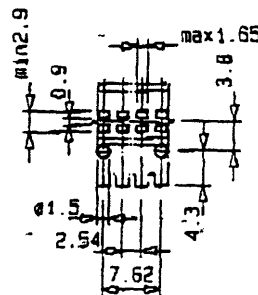
4-fach Anzeige 4 fold display

* Empfohlene LED's Recommended LED's	Art. Nr.
P1 - P7	1278-1004

Seite / page 21



Layoutvorschlag  
Layout Suggestion



① or ②

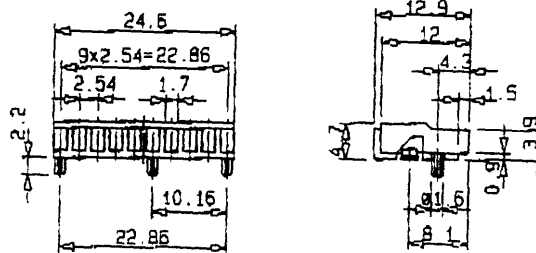
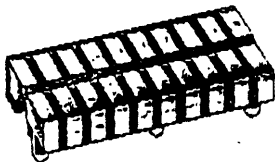
Allgemeine Hinweise siehe Seite 3  
Technische Daten der LED's siehe Seite 25/26

General remarks on page 3  
LED-Specification on page 25/26

# Bargraph Anzeige 4-, 10-, 20-fach

# Bargraph displ. 4, 10, 20 fold

Technische Daten	Technical Data	
Blenne	Diaphragme	PC schwarz / PC black UL94
LL-Werkstoff	LL-Material	PC glasklar / PC clear UL94
Umgebungstemperatur	Ambient Temperature	-40°C ... +85°C
ESD-Schutz	ESD-Protection	8 kV

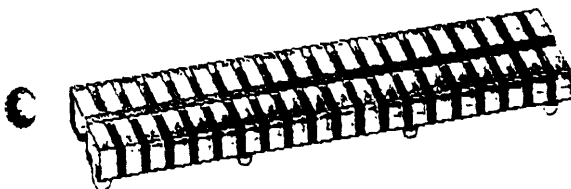
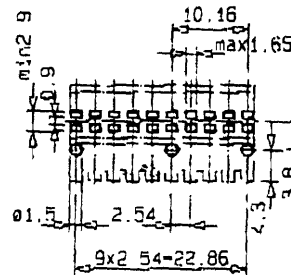


## 10-fach Anzeige 10 fold display

* Empfohlene LED's Recommended LED's	Art. Nr.
P1 - P7	1278.1010

\* Seite / page 21

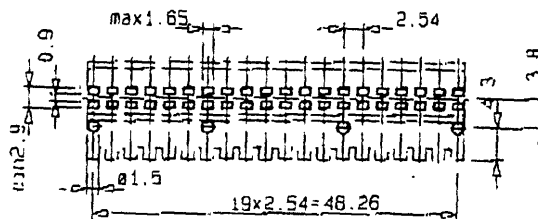
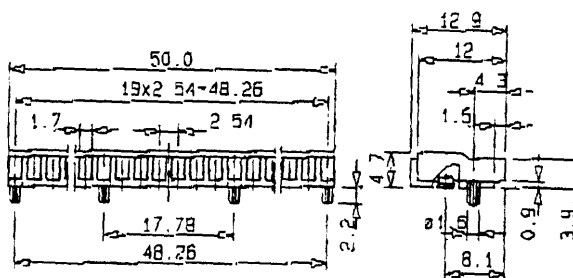
Layoutvorschlag  
Layout Suggestion



## 20-fach Anzeige 20 fold display

* Empfohlene LED's Recommended LED's	Art. Nr.
P1 - P7	1278.1020

\* Seite / page 21



Sonderausführungen (5- bis 19-fach)  
Mindestbestellmenge = 1000 Stück / auf Anfrage  
Special application (5-19 fold)  
Minimum quantity = 1000 piece / on request

② OF ②