

MICRO SWITCH

A DIVISION OF MINNEAPOLIS-HONEYWELL REGULATOR COMPANY

FED. MFR. CODE 91929

SWITCH - BASIC

CATALOG LISTING
BZ-2RW822-P4

APF3500

BZ-2RW822-P4

PAGE 1 OF 1

M

DRAWING NUMBER

15

ISSUE

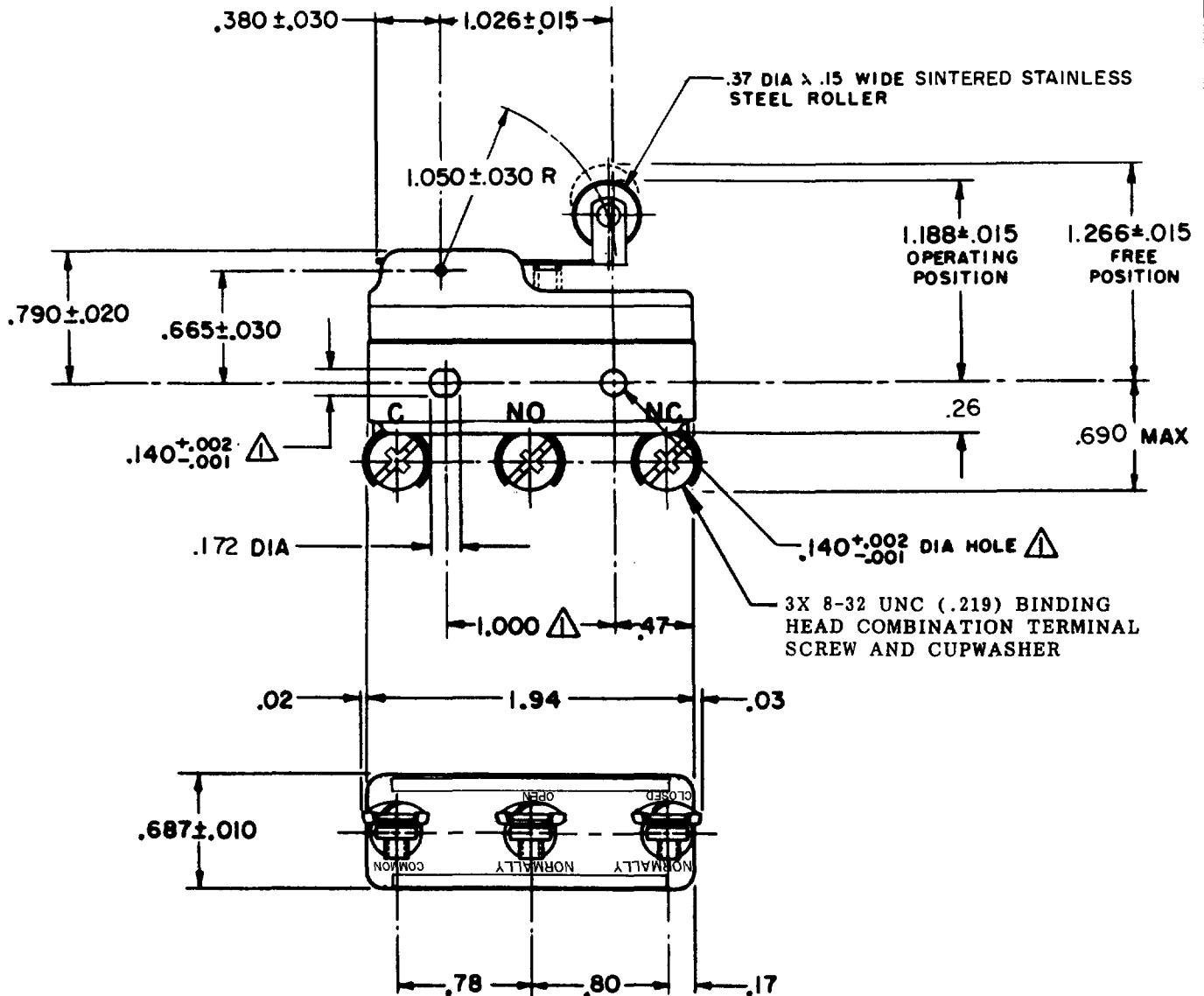
REPLACES

RELEASE NO.

CHECK

REVISIONS

A	CO 18736	8 C H	23 APRIL 62	19 JAN 06
B	CO 34308	8 L H	8 JUL 75	
C	CO 92446	WJM	31 JAN 83	RJ
D	CO 70184-M	G N T	2 JUN 92	CHECK
E	CO 75287-G	J A T	20 OCT 93	14 JUNE 97
F	CO 75204B DAW		1 FEB 94	
G	CO 75367B	L J F	3 MAR 94	
H	CO 77863	G J W	7 MAY 96	
J	CO93346			
K	DLT 2 SEP 98			
	TSG 19 JAN 06			



NOTE
 ▲ - MOUNTING HOLES WILL ACCEPT PINS OR SCREWS OF .139 MAX DIA ON 1.000 ±.002 CENTERS

THIS DRAWING COVERS A PROPRIETARY ITEM AND IS THE PROPERTY OF MICRO SWITCH, A DIVISION OF MINNEAPOLIS-HONEYWELL REGULATOR CO. THIS DRAWING IS NOT TO BE COPIED OR USED WITHOUT THE APPROVAL OF MICRO SWITCH.

CHARACTERISTICS	ELECTRICAL DATA	SCALE FULL
OPERATING FORCE ----- 6 OZ MAX	CONTACT ARRANGEMENT S P D T	DO NOT SCALE PRINT
RELEASE FORCE ----- 1 1/2 OZ MIN	- L74 - 15A-125, 250, OR 480 VAC; 2A-600 VAC 1/2 A-125 VDC; 1/4 A-250 VDC 1/8 HP-125 VAC; 1/4 HP-250 VAC	UNLESS OTHERWISE SPECIFIED DIMENSIONS ARE IN INCHES TOLERANCES ARE:
DIFFERENTIAL TRAVEL ----- .003-.020	-L288- -L306- -L315-	ONE PLACE (.0) ±.000 TWO PLACE (.00) ±.015 THREE PLACE (.000) ±.005 ANGLES ±
OVERTRAVEL ----- .094 MIN	CE 16A 250V ~ T85 5E4	WEIGHT .075 LB

FORMTEK

D-50378

DRAWN

CHECK

23 APRIL 62

G C H