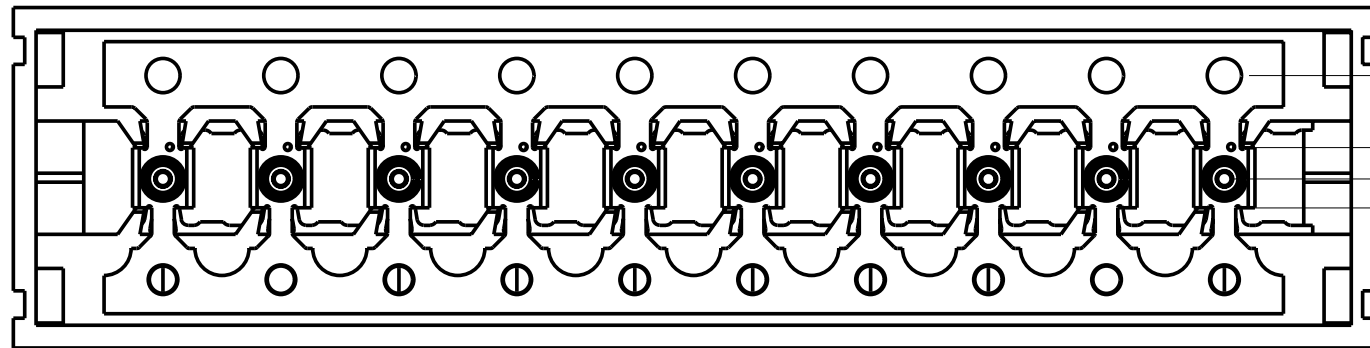
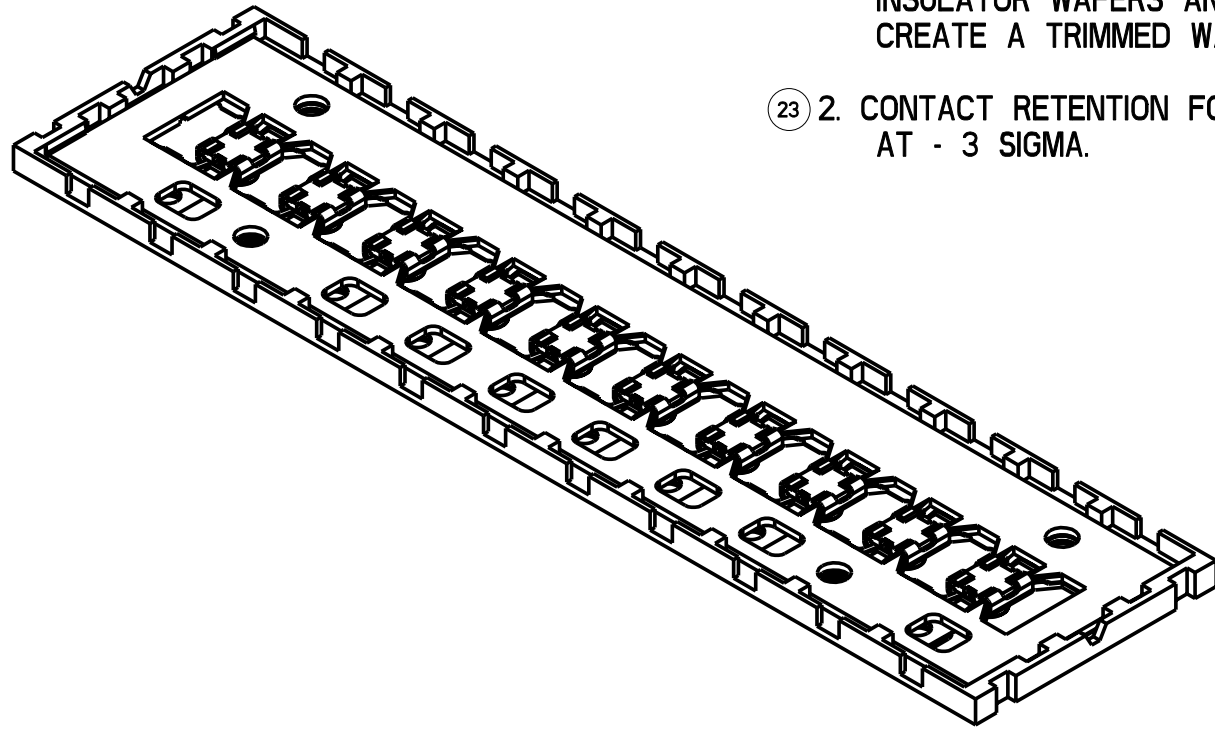


NOTES

1. STRIP TO BE ASSEMBLED AND CRIMPED AS SHOWN, THEN INSULATOR WAFERS AND CONTACT STRIPS REMOVED TO CREATE A TRIMMED WAFER ASSEMBLY

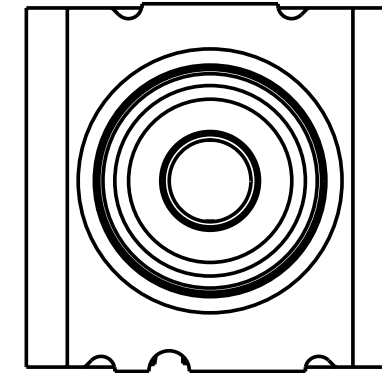
23 2. CONTACT RETENTION FORCE 0.5N MIN AT - 3 SIGMA.

SPC

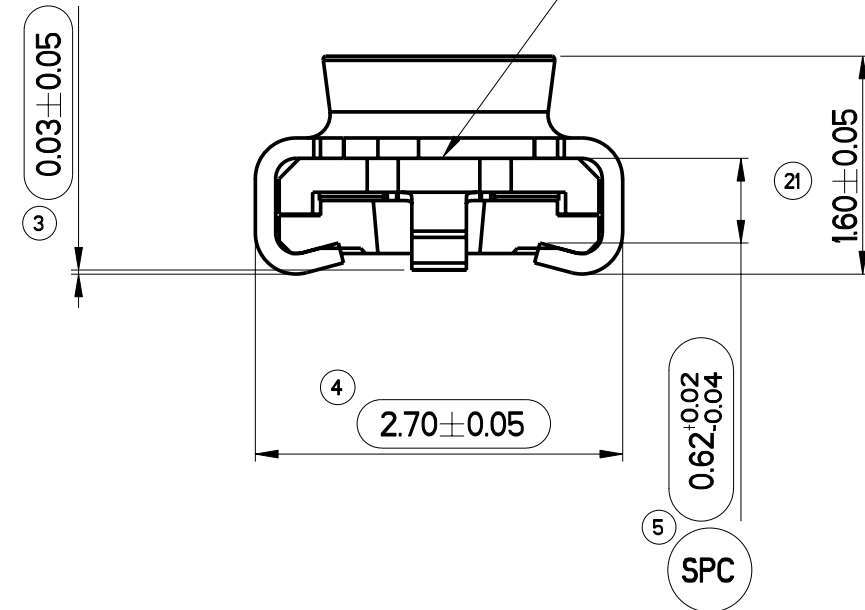


STAGE 1 - PRECUT CONDITION

3.17<sup>+0.01</sup><sub>-0.02</sub> WAFER TRIM POSITION  
 4.55 ± 0.03 REF  
 5.83<sup>+0.02</sup><sub>-0.01</sub> WAFER TRIM POSITION



MAX GAP BETWEEN TOP OF INSULATOR AND UNDERSIDE OF SHELL = 0.03 22

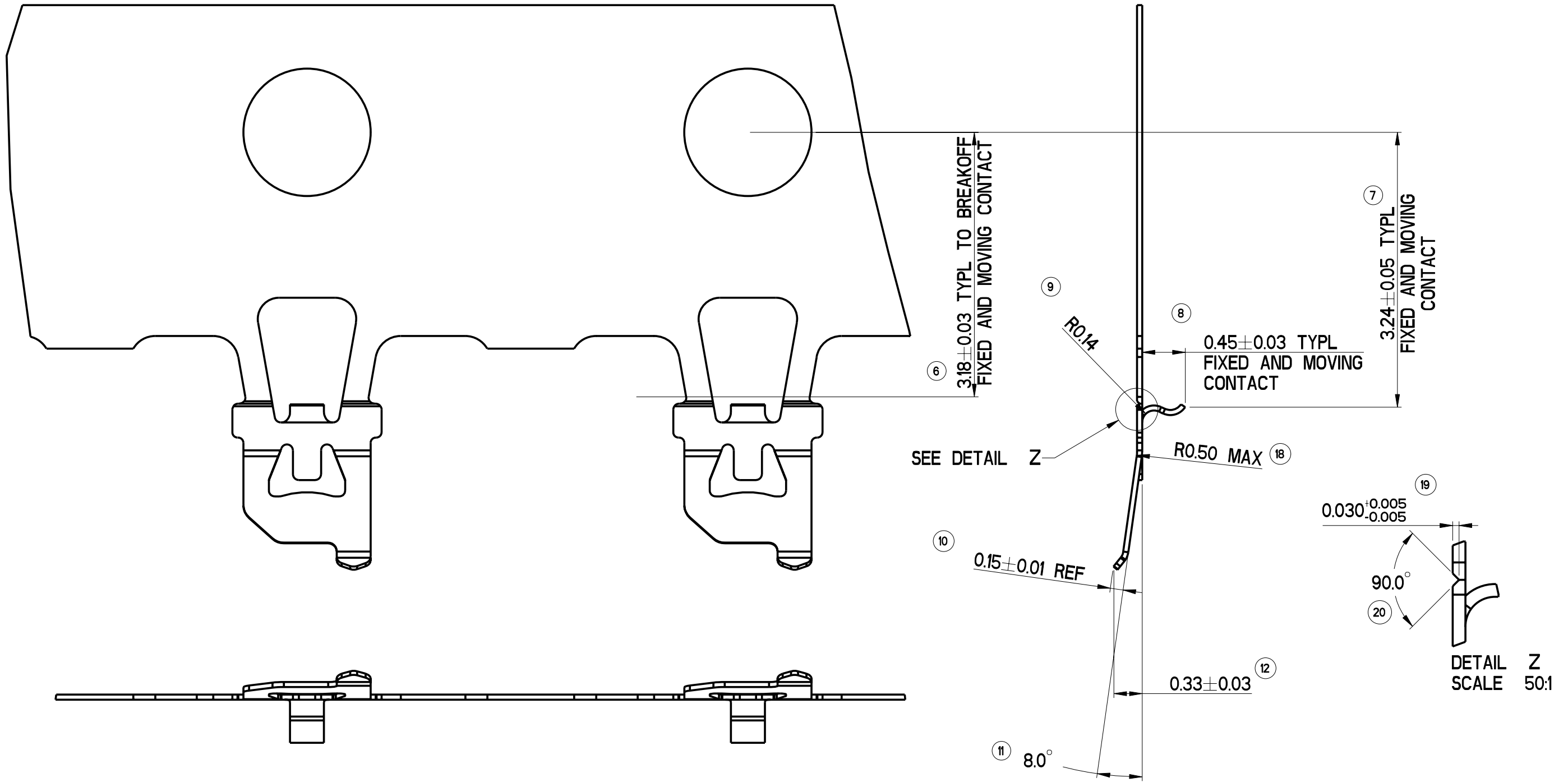


SEE SHEET 2 FOR CONTACT ASSEMBLY BENDING DETAILS  
 SEE SHEET 3 FOR TRIMMED STRIP AND INSPECTION DETAILS  
 SEE SHEET 4 FOR PACKAGING DETAILS.

ASSEMBLY ALSO APPLIES TO 120220-0190

DO NOT SCALE		Total Volume = 0.000 mm <sup>3</sup>		Total Surface Area = mm <sup>2</sup>		PDM: 1.8†		A3/B	
Drawn	PJ	08-Sep-04	Material:		Jays Close, Viabes Estate, Basingstoke, Hants. RG22 4BA, UK		Pro/E Generic Model		
Checked			3rd ANGLE PROJECTION				Title <b>MINI RF CONNECTOR ASSEMBLY DRAWING</b>		
Engineer.	PJ		Surface Roughness						
Manufact.			63.0						
Assembly			Treatment:	Unless Specified	Ref:		Drwg. No. 120220-0180		
Quality			Dimensions in: mm	Cust Spec No:	Scale 18:1	Sheet 1 of 4	iss/rev E		
Approvals	Sign	Date	This is issued in strict confidence on condition that it is not used as a basis for manufacture or sale and that it is not copied reprinted or disclosed to a third party either wholly or in part without the prior written consent of ITT Industries © 08-Sep-04						

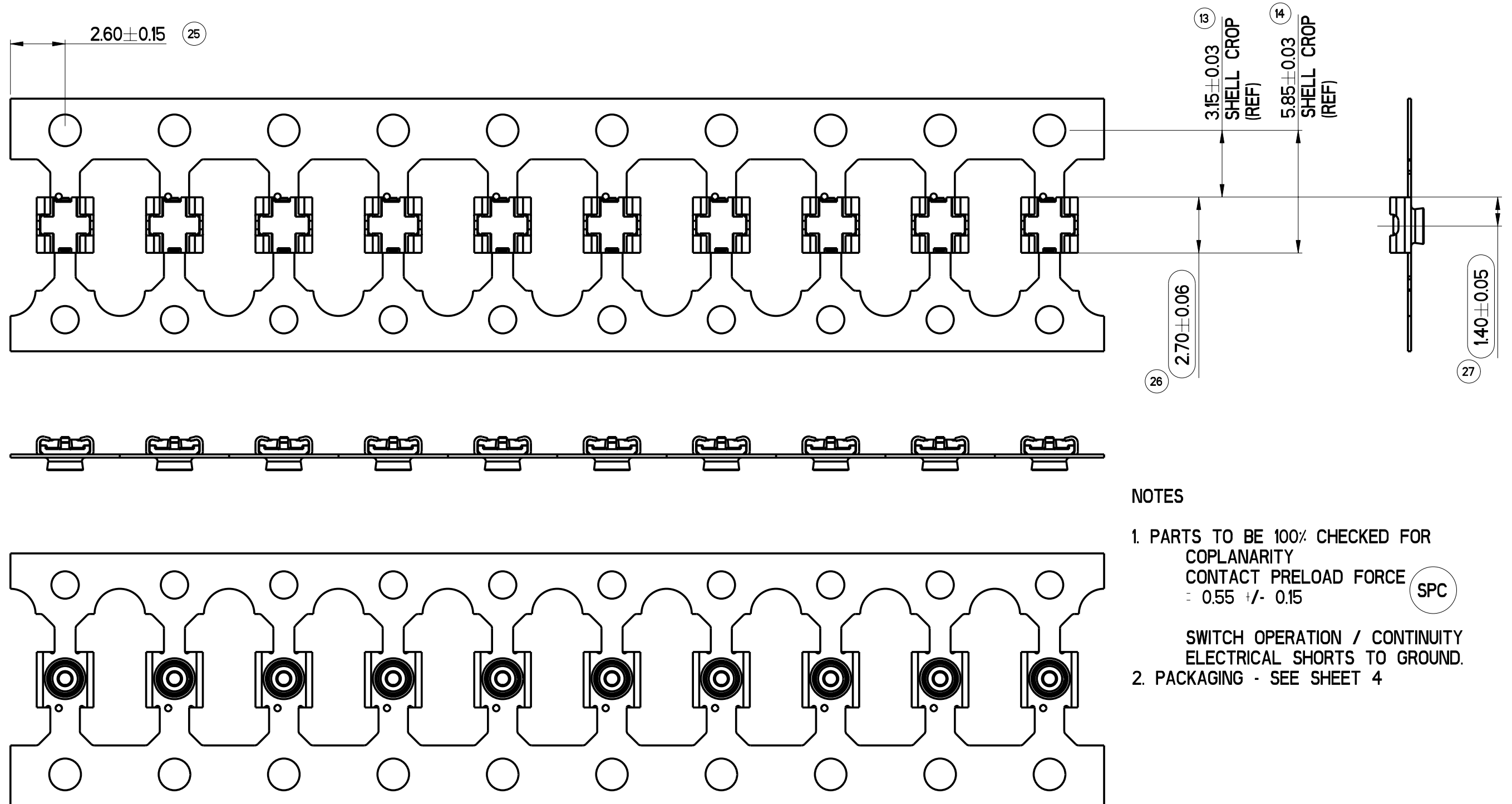
E	MODIFIED DCN K6045	ADVANCED
D	MODIFIED DCN K5817	9-Dec-04
C	TOOLING RELEASE DCN K5767	2-Nov-04
B	REVISED	20-Sep-04
A	PROVISIONAL	08-Sep-04
Iss Rev	DCN/ECN or Description	Date



SEE SHEET 1 FOR UPDATES

<b>DO NOT SCALE</b>		Total Volume = 0.000 mm <sup>3</sup>		Total Surface Area = mm <sup>2</sup>		PDM: 1.8†		A3/B	
Drawn	PJ	08-Sep-04	Material:	 3rd ANGLE PROJECTION	 ITT Industries	Jays Close, Viabes Estate, Basingstoke, Hants. RG22 4BA, UK		Pro/E Generic Model	
Checked								Title	
Engineer	PJ							MINI RF CONNECTOR ASSEMBLY DRAWING	
Manufact.									
Assembly									
Quality			Treatment:	 63.0 Unless Specified	Ref:	Scale 18:1	Sheet 2 of 4	Drwg. No. 120220-0180	iss/rev E
Approvals	Sign	Date	Dimensions in: mm						

C	TOOLING RELEASE DCN K5767	2-Nov-04
A	PROVISIONAL	08-Sep-04
Iss Rev	DCN/ECN or Description	Date



NOTES

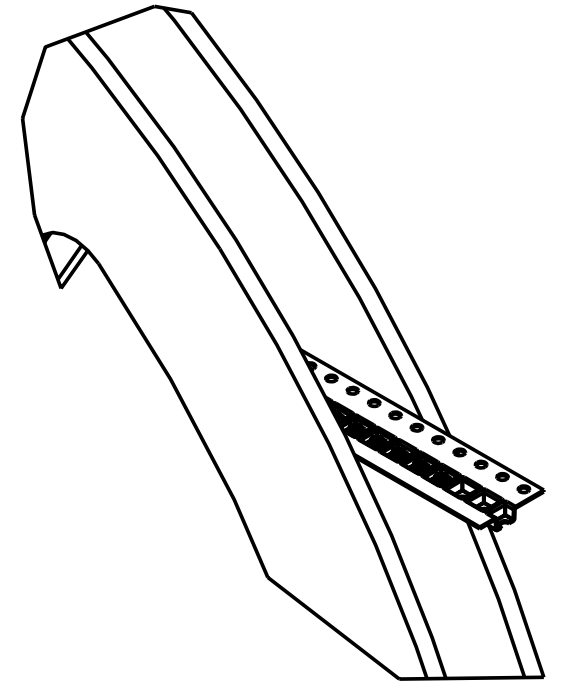
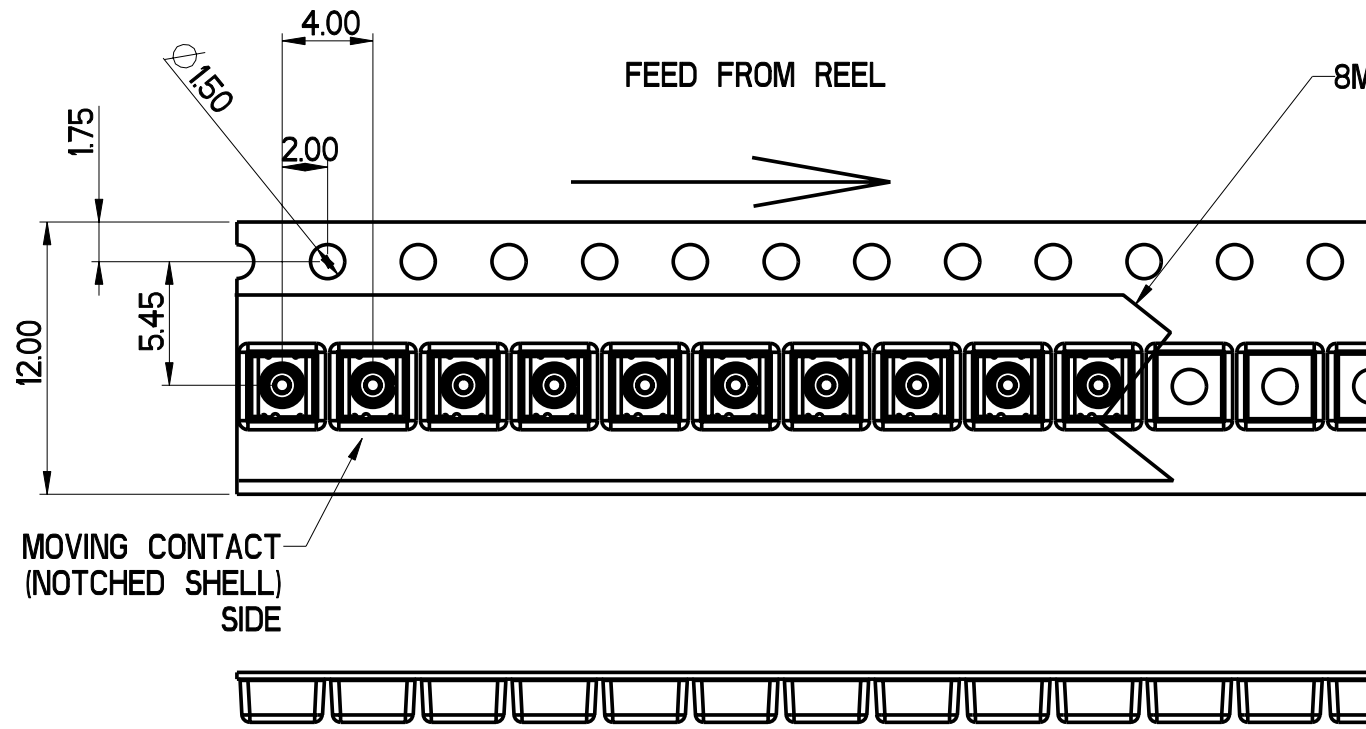
- PARTS TO BE 100% CHECKED FOR  
COPLANARITY  
CONTACT PRELOAD FORCE = 0.55 +/- 0.15 (SPC)  
SWITCH OPERATION / CONTINUITY  
ELECTRICAL SHORTS TO GROUND.
- PACKAGING - SEE SHEET 4

STAGE 2 - TRIMMED STRIP

SEE SHEET 1 FOR UPDATES

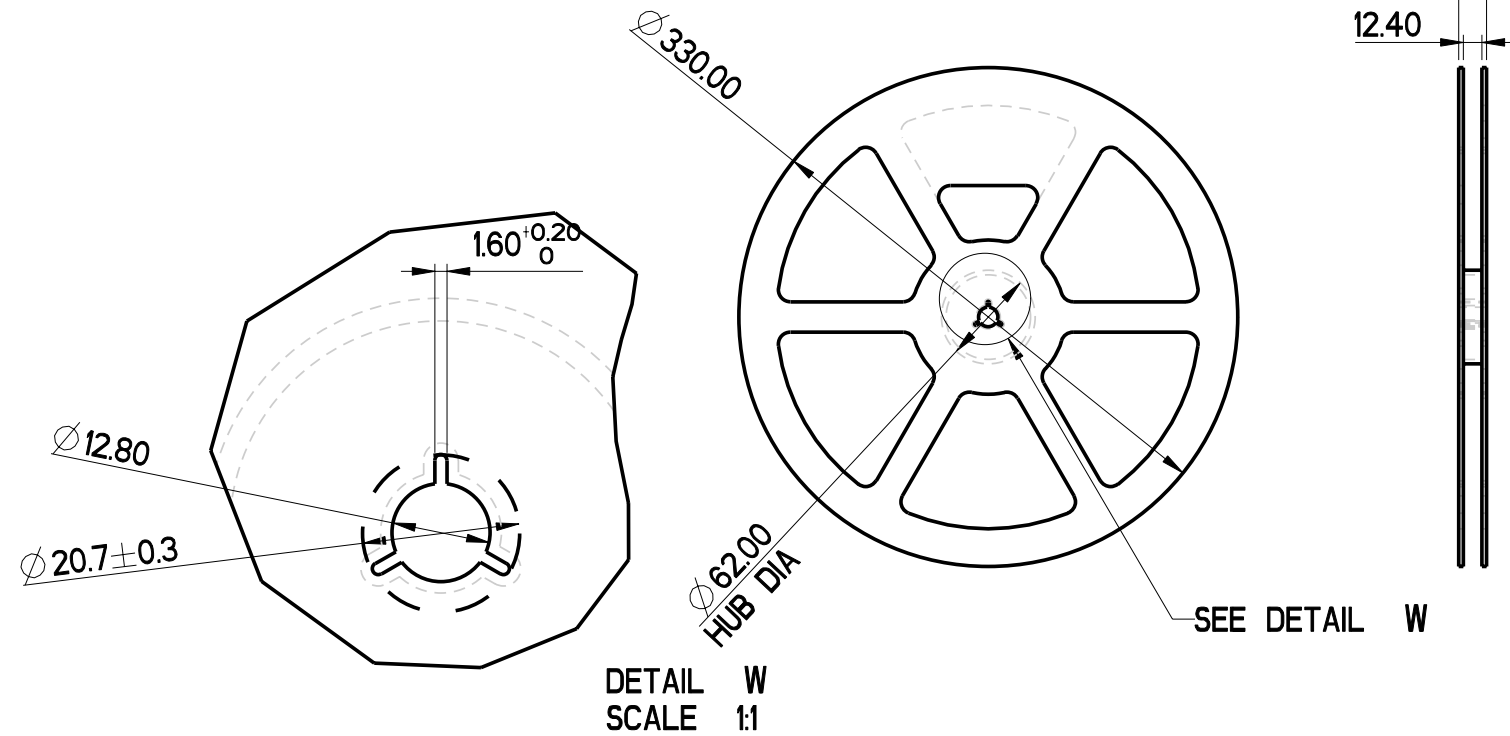
<b>DO NOT SCALE</b>			Total Volume = 0.000 mm <sup>3</sup>	Total Surface Area = mm <sup>2</sup>	PDM: 1.8t	A3/B
Drawn	PJ	08-Sep-04	Material:	 3rd ANGLE PROJECTION Surface Roughness 63.0 Unless Specified	 ITT Industries Jays Close, Viabes Estate, Basingstoke, Hants. RG22 4BA, UK	Pro/E Generic Model
Checked						Title
Engineer	PJ					MINI RF CONNECTOR ASSEMBLY DRAWING
Manufact.						
Assembly						
Quality			Treatment:	Ref:	Scale 18:1	Sheet 3 of 4
Approvals	Sign	Date	Dimensions in: mm	Cust Spec No:	Drwg. No. 120220-0180	iss/rev E

C	TOOLING RELEASE DCN K5767	2-Nov-04
A	PROVISIONAL	08-Sep-04
Iss Rev	DCN/ECN or Description	Date



NOTES.

1. 8,000 PARTS TO BE PACKED ON  $\phi 330$  (13") REELS. PACKAGING EQUIPMENT MUST ALSO HANDLE  $\phi 180$  REELS.
2. TAPE AND REEL PACKAGING TO CONFORM TO EIA-481
3. LEADER LENGTH = 360MM, TRAILER LENGTH = 160MM



DETAIL W  
SCALE 1:1

SEE SHEET 1 FOR UPDATES

<b>DO NOT SCALE</b>			Total Volume = 0.000 mm <sup>3</sup>	Total Surface Area = mm <sup>2</sup>	PDM: *** **	A3/B	
Drawn	PJ	12-Jul-04	Material:	 3rd ANGLE PROJECTION Surface Roughness 63.0 Unless Specified	 ITT Industries Jays Close, Viabes Estate, Basingstoke, Hants. RG22 4BA, UK	Pro/E Generic Model	
Checked						Title	
Engineer	PJ					MINI RF CONNECTOR PACKAGING DRAWING	
Manufact.							
Assembly							
Quality			Treatment:	Ref:	Scale 3:1	Sheet 4 of 4	
Approvals	Sign	Date	Dimensions in: mm	Cust Spec No:			
C	TOOLING RELEASE DCN K5767	2-Nov-04	This is issued in strict confidence on condition that it is not used as a basis for manufacture or sale and that it is not copied reprinted or disclosed to a third party either wholly or in part without the prior written consent of ITT Industries © 12-Jul-04			Drwg. No. 120220-0180	iss/rev E
A	PROVISIONAL	12-Jul-04					
Iss Rev	DCN/ECN or Description	Date					