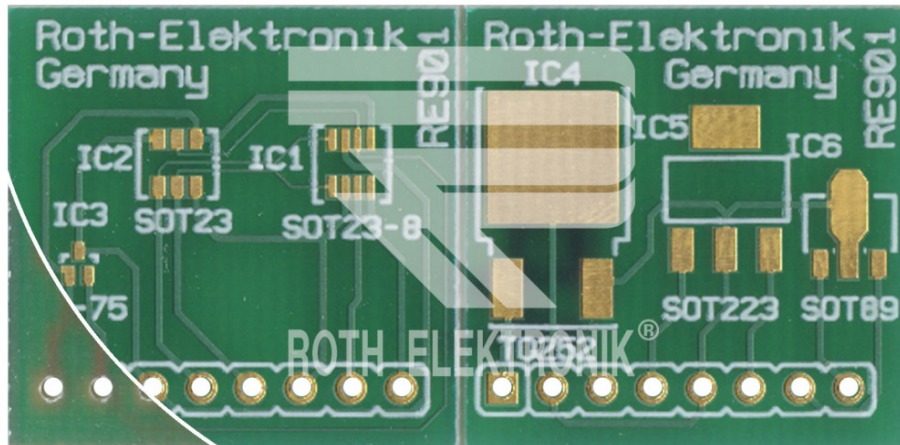


SOT 23 SMD Multiadapter



RE901



- multiadapter circuit board with six micro-miniature semiconductor circuits
- EPOXY fibre-glass FR4 1.50 mm single-sided 35 µm CU
- component side chem. NI/AU, solder stop-off mask and board assembly print
- the PCB can be equipped with twenty different types of semiconductors listed in the table
- 8-pole pin terminal connection spacing 2.54 mm, boring diameter 1.00 mm
- pre-notched break-off lines to separate the modules
- tanning data (format Gerber) for production of the solder stop-off mask and the solder paste print are available free of charge on request
- size 22.86 mm x 46.72 mm