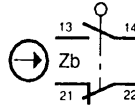


986-689 to 793

GSA EN 50041 Safety Metal Standard

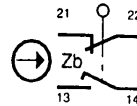


Snap-Action Contacts



█ Circuit closed
• Positive opening to IEC 947-5-1-3

Slow-Action Contacts MAKE BEFORE BREAK



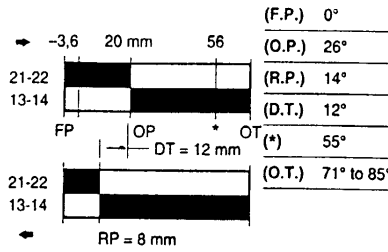
Technical Data

Mechanical life up to 15 million operations

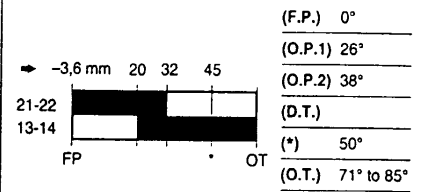
Degree of protection IP67
NEMA/UL type 1, 4, 12, 13

Temperature range
Operating :
-25°C to +85°C
-13°F to +185°F
Storage :
-40°C to +85°C
-40°F to +185°F

Approvals* IEC 947-5-1
EN60947-5-1

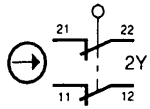


1-22 3-14 1-22 3-14

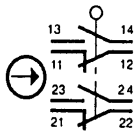


1-22 3-14

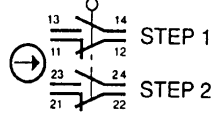
Slow-Action Contacts
2 NORMALLY CLOSED



Snap-Action Contacts
DOUBLE POLE



Snap-Action Contacts
DOUBLE POLE SEQUENTIAL



Actuator Types

