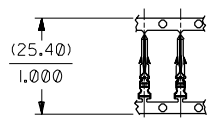
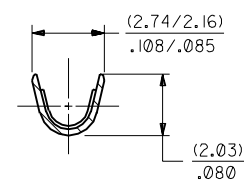
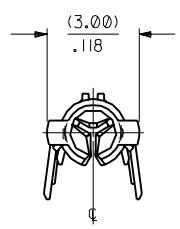


PART NO.	ENG. NO.	
02-06-2201	1786-(90)I	
02-06-2202	1786-(90)IL	
02-06-6205	1786-(59)I	OBSOLETE
02-06-6206	1786-(59)IL	OBSOLETE
02-06-6201	1786-(550)	
02-06-6202	1786-(550)L	

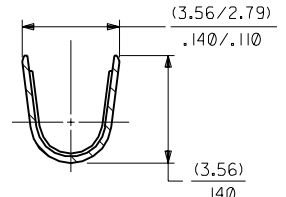


CARRIER VIEW
ACTUAL SIZE



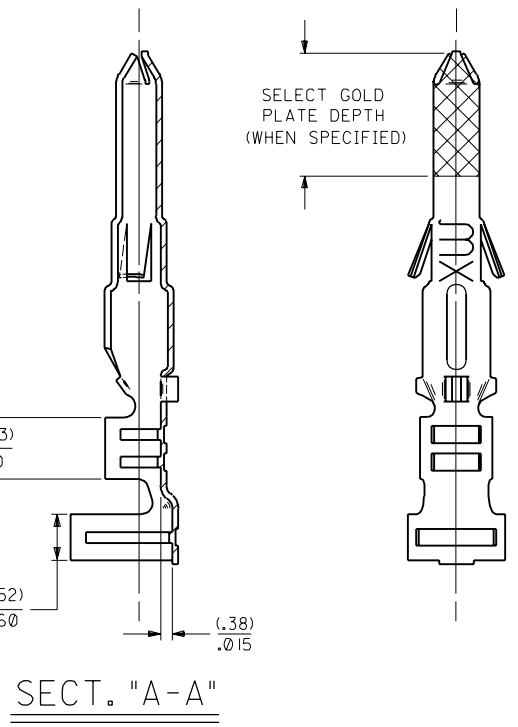
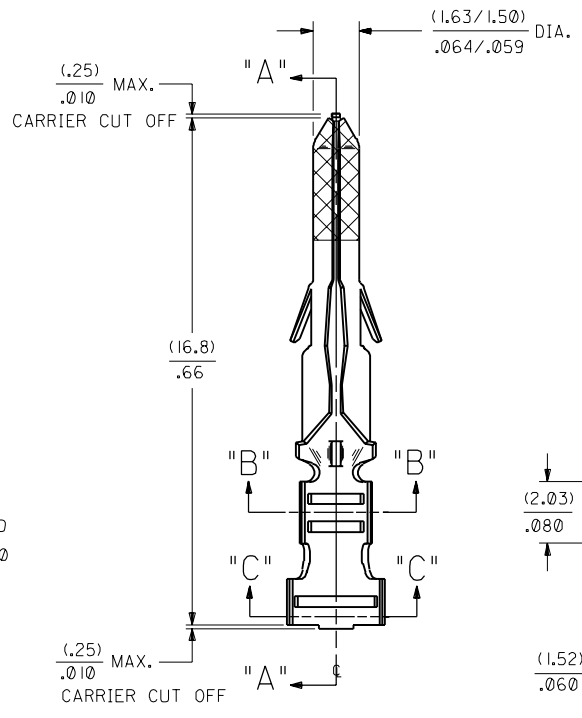
SECT. "B-B"

SCALE:10X



SECT. "C-C"

SCALE:10X



SECT. "A-A"

LEGEND

1786-(****)*

- P=PREPLATE
- BLANK=POSTPLATE
- FINISH CODE
- FORM BLANK=CHAIN
- L=LOOSE

- NOTES:
- TERMINAL FOR USE WITH (1.57)/.062 DIA. SERIES HOUSINGS AND WILL ACCEPT 18 THRU 24 AWG WIRE WITH (1.52/3.05)/.060/.120 INSULATION DIA.
 - THIS PART CONFORMS TO PRODUCT SPEC. 02-06.

FINISH CODES:

- 901 HOT TIN DIP (.00005I)/.000020 MIN.
- 591 SELECT GOLD PLATE (.00127)/.000050 MIN. IN CONTACT AREA, OVER (.00127)/.000050 MIN. NICKEL OVERALL WITH (.00025)/.000010 MAX. GOLD FLASH OVERALL.
- 550 SELECT GOLD PLATE (.00038)/.000015 MIN. IN CONTACT AREA, OVER (.00076)/.000030 MIN. NICKEL OVERALL WITH (.00025)/.000010 MAX. GOLD FLASH OVERALL.

MATERIAL NOTE:
PHOSPHOR BRONZE, ALLOY #C51000,
(.20)/.008 THICK, SPRING TEMPER

DIMENSIONS SHOWN (METRIC) INCH		REVISIONS																	
UNLESS OTHERWISE SPECIFIED TOLERANCES ANGULAR \pm 1/2°		REVISE ONLY ON CAD SYSTEM																	
<table border="1"> <thead> <tr> <th></th> <th>INCH</th> <th>METRIC</th> </tr> </thead> <tbody> <tr> <td>3 PLACE</td> <td>\pm .010</td> <td>---</td> </tr> <tr> <td>2 PLACE</td> <td>\pm .014</td> <td>\pm 0.25</td> </tr> <tr> <td>1 PLACE</td> <td>---</td> <td>\pm 0.35</td> </tr> </tbody> </table>			INCH	METRIC	3 PLACE	\pm .010	---	2 PLACE	\pm .014	\pm 0.25	1 PLACE	---	\pm 0.35	<table border="1"> <tr> <td>DATE</td> <td>9/17/87</td> </tr> <tr> <td>SHEET NO.</td> <td>1 OF 1</td> </tr> </table>		DATE	9/17/87	SHEET NO.	1 OF 1
	INCH	METRIC																	
3 PLACE	\pm .010	---																	
2 PLACE	\pm .014	\pm 0.25																	
1 PLACE	---	\pm 0.35																	
DATE	9/17/87																		
SHEET NO.	1 OF 1																		
DRAFT WHERE APPLICABLE MUST REMAIN WITHIN DIMENSIONS		<p>MOLEX INCORPORATED</p> <p>1151E, ILL. 60532 U.S.A.</p>																	
<p>DRWG. BY: GEP CHK'D. BY: RW</p> <p>APP'D. BY: RAS SCALE: 8 : 1</p>		<p>PART NO. SD-1786-*</p> <p>FILE NAME: SD1786X1</p> <p>THIS DRAWING CONTAINS INFORMATION THAT IS PROPRIETARY TO MOLEX INC. AND SHOULD NOT BE USED WITHOUT WRITTEN PERMISSION.</p>																	

AN	OBSOLETE P/N UCR2002-0270 COMERCI 01/9/26
AMI	OBSOLETE -1550I & -1550IL ECR U6 035B CXC 9/15/95 RW
AM	REV. & REDRAWN PER ECR 10312 GEP 9-17-86 RW

1786