

FEATURES AND SPECIFICATIONS

Features and Benefits

- Sizes 2 to 6 circuits
- Surface Mount Compatible
- Optional board lock features offered in 1.57, 2.36, and 3.18mm (.062, .093, and .125) lengths
- Positive lock
- Fully polarized
- Wire-to-board

Reference Information

Product Specification: PS-44441-9999
 Packaging: Bag and tray
 UL File No.: E29179
 CSA File No.: LR19980
 Mates With: [44441](#) housing
 Designed In: Inches

Electrical

Voltage: 1000V
 Current: 18.0A max.*
 Contact Resistance: 10mΩ max.
 Dielectric Withstanding Voltage: 5000V
 Insulation Resistance: 1000 MΩ min.

Mechanical

Insertion Force to PCB: 5 lb max.
 Normal Force: 3 lb nominal
 Durability: 25 cycles

Physical

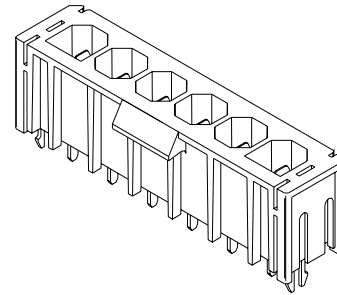
Housing: Black glass-filled nylon, UL 94V-0
 Contact: Brass
 Plating: Tin
 Operating Temperature: -40 to +75°C
 PCB Thickness: 1.57, 2.36, 3.18mm (.062, .093 and .125")

* Depending on circuit size, wire gauge and PCB. Please refer to product specification.

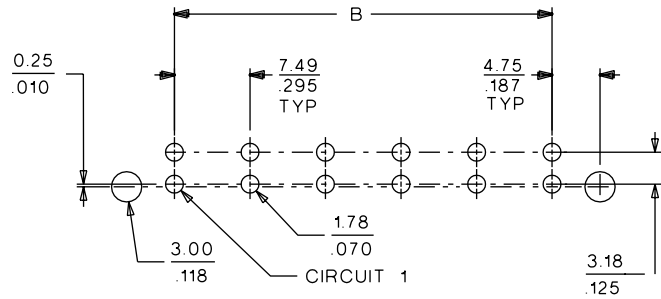
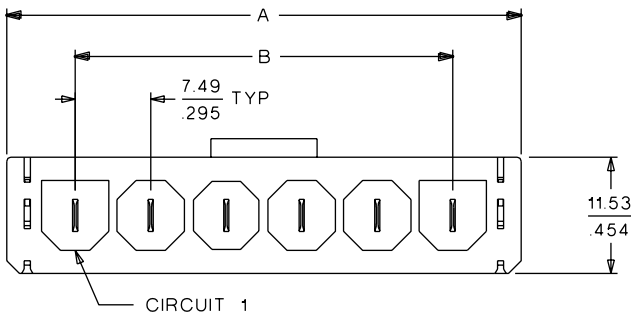
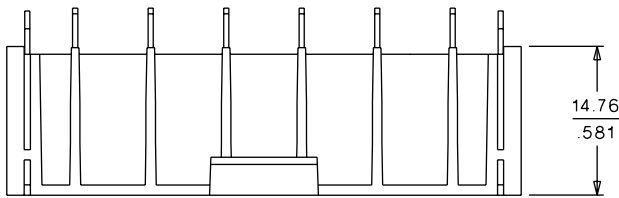
molex® 7.50mm (.295") Pitch Sabre™ Wire-to-Board Header

43160

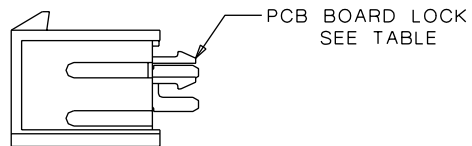
Vertical, Single Row, SMC With and without Board Lock



CATALOG DRAWING (FOR REFERENCE ONLY)



PCB LAYOUT: COMPONENT SIDE
 RECOMMENDED PCB THICKNESS: SEE TABLE



ORDERING INFORMATION AND DIMENSIONS

Without Board Lock				
Circuits	Order No.	Dimension		
		A	B	C
2	43160-0102	21.08 (.830)	7.49 (.295)	3.81 (.150)
2	43160-0302	21.08 (.830)	7.49 (.295)	5.33 (.210)
3	43160-0103	28.58 (1.125)	14.99 (.590)	3.81 (.150)
3	43160-0303	28.58 (1.125)	14.99 (.590)	5.33 (.210)
4	43160-0104	36.07 (1.420)	22.48 (.885)	3.81 (.150)
4	43160-0304	36.07 (1.420)	22.48 (.885)	5.33 (.210)
5	43160-0105	43.56 (1.715)	29.97 (1.180)	3.81 (.150)
5	43160-0305	43.56 (1.715)	29.97 (1.180)	5.33 (.210)
6	43160-0106	51.05 (2.010)	37.47 (1.475)	3.81 (.150)
6	43160-0306	51.05 (2.010)	37.47 (1.475)	5.33 (.210)

With Board Lock					
Circuits	Order No.	PCB Thickness	Dimension		
			A	B	C
2	43160-2102	.062	21.08 (.830)	7.49 (.295)	3.81 (.150)
2	43160-4302	.093	21.08 (.830)	7.49 (.295)	5.33 (.210)
2	43160-6302	.125	21.08 (.830)	7.49 (.295)	5.33 (.210)
3	43160-2103	.062	28.58 (1.125)	14.99 (.590)	3.81 (.150)
3	43160-4303	.093	28.58 (1.125)	14.99 (.590)	5.33 (.210)
3	43160-6303	.125	28.58 (1.125)	14.99 (.590)	5.33 (.210)
4	43160-2104	.062	36.07 (1.420)	22.48 (.885)	3.81 (.150)
4	43160-4304	.093	36.07 (1.420)	22.48 (.885)	5.33 (.210)
4	43160-6304	.125	36.07 (1.420)	22.48 (.885)	5.33 (.210)
5	43160-2105	.062	43.56 (1.715)	29.97 (1.180)	3.81 (.150)
5	43160-4305	.093	43.56 (1.715)	29.97 (1.180)	5.33 (.210)
5	43160-6305	.125	43.56 (1.715)	29.97 (1.180)	5.33 (.210)
6	43160-2106	.062	51.05 (2.010)	37.47 (1.475)	3.81 (.150)
6	43160-4306	.093	51.05 (2.010)	37.47 (1.475)	5.33 (.210)
6	43160-6306	.125	51.05 (2.010)	37.47 (1.475)	5.33 (.210)