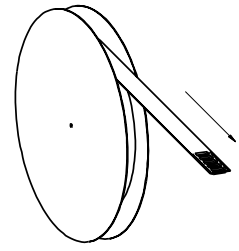
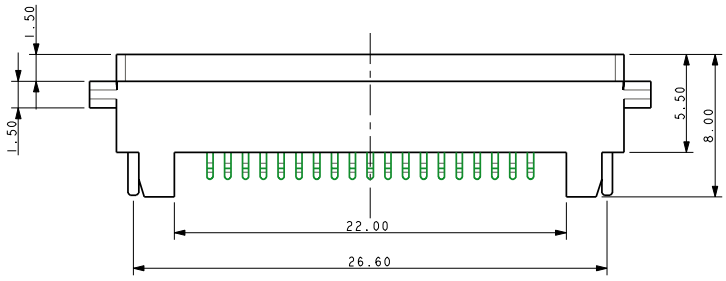
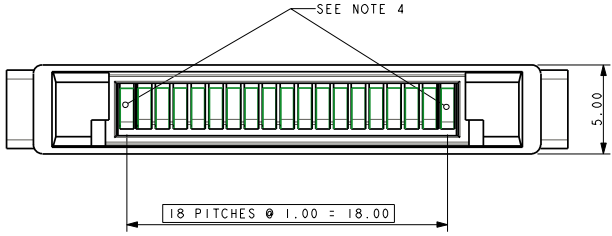
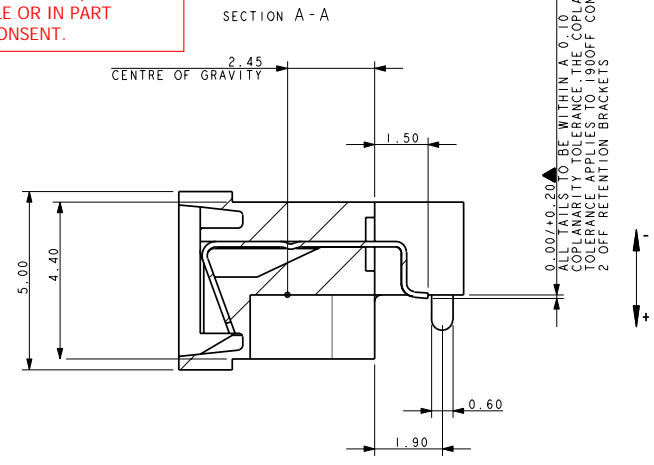
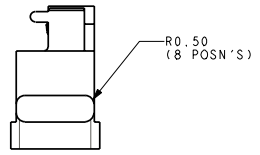
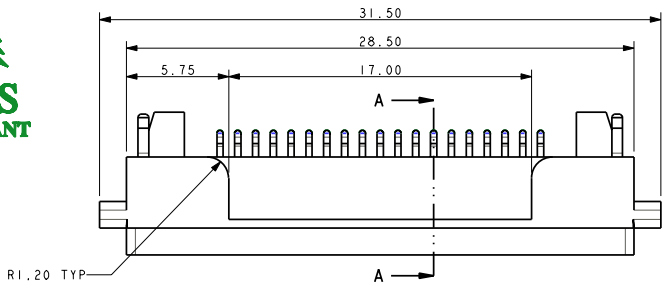
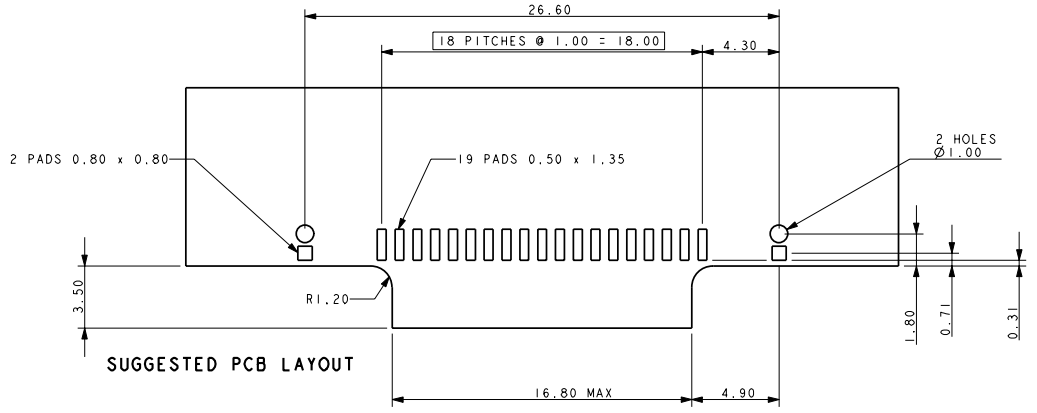
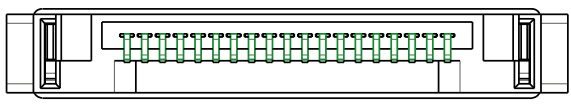
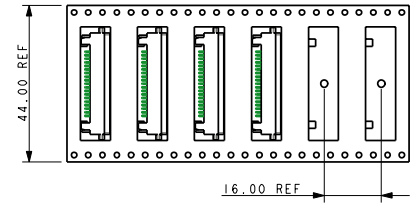




ELCO EUROPE (A DIVISION OF AVX LTD.) CONFIDENTIAL PROPRIETARY
 THE DRAWING ON THIS PRINT AND INFORMATION THEREWITH ARE
 PROPRIETARY TO ELCO EUROPE (A DIVISION OF AVX LTD.) AND
 SHALL NOT BE USED OR DISCUSSED IN WHOLE OR IN PART
 WITHOUT ELCO EUROPE'S WRITTEN CONSENT.



PACKING DETAILS



- NOTES :-
1. INSULATOR MATERIAL :- STANYL TE 250 F6, 30% GLASS FILLED, UL94 V0, COLOUR BLACK.
 2. SIGNAL CONTACT MATERIAL :- PHOSPHOR BRONZE PB103H.
 3. FOR FULL SPECIFICATION REFER TO ELCO SPEC 201-01-079.
 4. CONTACTS 1 AND 19 ARE SET ABOVE ALL OTHERS FOR EARLY MATE LATE BREAK CONNECTION
 5. PART TO BE PACKED IN TAPE AND REEL, QTY 600 PER REEL.
 6. ALL DIMENSIONS REFERENCE DIMENSIONS UNLESS TOLERANCED.

ELCO EUROPE (A DIVISION OF AVX LTD.) CONFIDENTIAL PROPRIETARY
 THE DRAWING ON THIS PRINT AND INFORMATION THEREWITH ARE
 PROPRIETARY TO ELCO EUROPE (A DIVISION OF AVX LTD.) AND
 SHALL NOT BE USED OR DISCUSSED IN WHOLE OR IN PART
 WITHOUT ELCO EUROPE'S WRITTEN CONSENT.



Drawn GKJ
 Size CV

Description: STD 19 WAY SOCKET CONNECTOR
 Part Number: 20-9157-019-000-006S

DATE: 29-Mar-96
 Issue: 1

FORM ISE-61-956-3 ISS-7
 REV. 10/23/28