

MICRO SWITCH

FREEPORT ILLINOIS, U.S.A
A DIVISION OF HONEYWELL
FED. MFG. CODE 91929

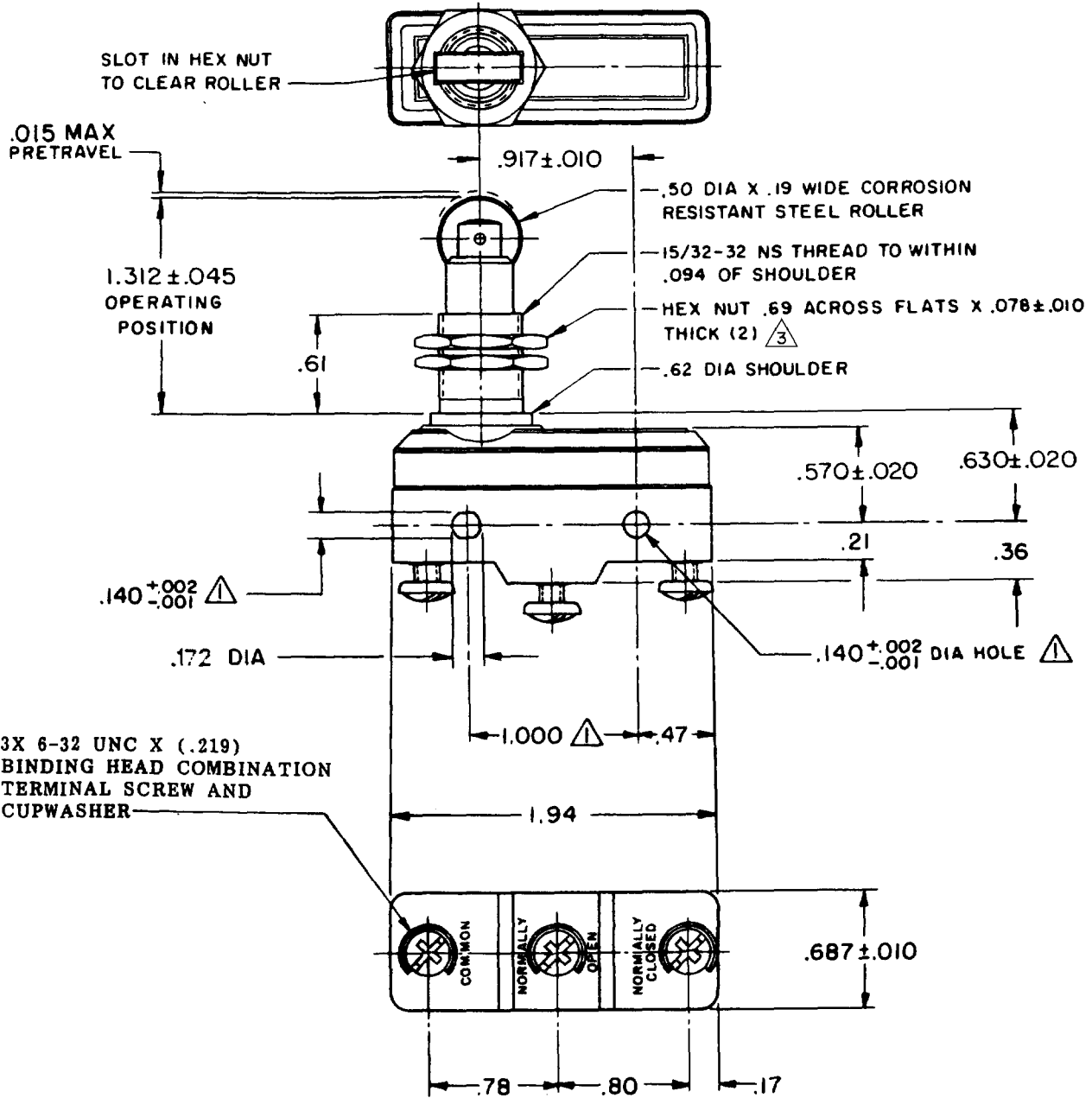
SWITCH - BASIC

CATALOG LISTING

BZ-2RQ1872-A2

ALM0250

BZ-2RQ1872-A2
 PAGE 1 OF 1
M
 DRAWING NUMBER
7
 ISSUE
6
 REVISIONS
A 0031578 JAH 23 JAN 73
B 73287-J JAL 22 NOV 93
C CO-77589 KDR 29 MAR 94
D CO-82133 CSL 1 AUG 96
E CO93346 DLT 19 AUG 98
F 0015929 DVM 25 NOV 05
G CH 15 DEC 69
 RASTER DRAWN
 CHECK L5D 17 DEC 69
 CHECK RFS 16 DEC 69
 CHECK RJC 25 NOV 05
 RELEASE NO. PR-1026
 REPLACES



- NOTES
- $\triangle 1$ MOUNTING HOLES WILL ACCEPT PINS OR SCREWS OF .139 MAX DIA ON 1.000 ± .002 CENTERS
 - 2 - CONTACT MATERIAL - GOLD ALLOY
 - $\triangle 3$ HARDWARE FURNISHED UNASSEMBLED

THIS DRAWING COVERS A PROPRIETARY ITEM AND IS THE PROPERTY OF MICRO SWITCH, A DIVISION OF HONEYWELL. THIS DRAWING IS NOT TO BE COPIED OR USED WITHOUT THE APPROVAL OF MICRO SWITCH.

CHARACTERISTICS	ELECTRICAL DATA	SCALE FULL
OPERATING FORCE ----- 9 - 13 OZ	CONTACT ARRANGEMENT S P D T	DO NOT SCALE PRINT
RELEASE FORCE ----- 4 OZ MIN	L22 1A - 125 VAC	UNLESS OTHERWISE NOTED
DIFFERENTIAL TRAVEL --- .0004 - .0020	L288	DIMENSIONS ARE IN INCHES
OVERTRAVEL ----- .140 MIN	L315 L307	TOLERANCES ARE:
	CE \triangle \triangle 05 \triangle	ONE PLACE (.0) ± .030
	1A 250V \sim T85 25E3	TWO PLACE (.00) ± .015
		THREE PLACE (.000) ± .005
		ANGLES ± .005
		WEIGHT