

FEATURES AND SPECIFICATIONS

Features and Benefits

- Multiple contacting points
- Patented triple cantilever with box shroud
- Suitable for high vibration requirements
- Box shroud prevents contamination to the contact surface
- Crimping die or hand tool available

Reference Information

Product Specification: PS-7879
 Packaging: Bag or reel
 Tooling Information: See crimp tooling section
 UL File No.: E29179
 CSA File No.: LR19980
 Use With: 7880 housings
 Designed In: Inches

Electrical

Voltage: 250V
 Current: 2.5A
 Contact Resistance: 10mΩ max.
 Dielectric Withstanding Voltage: 1500V
 Insulation Resistance: 50K MΩ min.

Mechanical

Wire Pull-Out Force:

Wire Gauge (AWG)	22	24	26	28	30
Pull-Out Force (lb)	10	8	6	4	3

Mating Force: 475g max.
 Unmating Force: 100g min.
 Normal Force: 430g min.

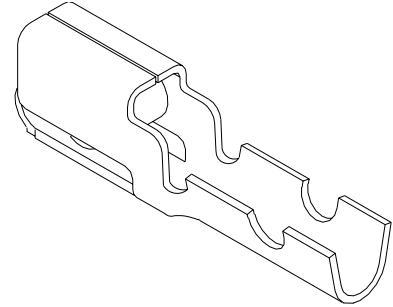
Physical

Contact: Brass
 Plating: See Table
 Wire Accommodation: 22 to 30 AWG
 Insulation Range: 1.58mm (.062") diameter max.

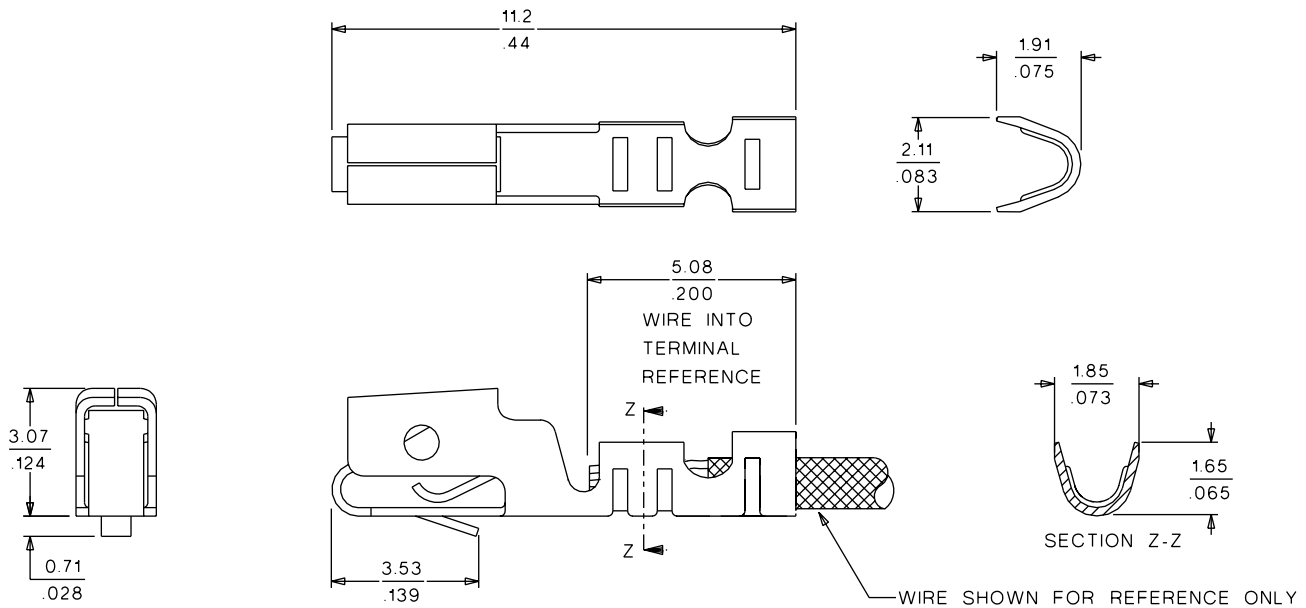
molex® 2.54mm (.100") Pitch KK® Crimp Terminal

7879

High Pressure



PCB and Wire Connectors



ORDERING INFORMATION AND DIMENSIONS

Order No.		Plating	Wire Gauge (AWG)	Insulation Diameter
Bag	Reel			
• 08-50-0005	• 08-50-0004	Tin/Copper	22-30	1.57 (.062) max.
08-55-0129	08-55-0124	Select Gold		

• US Standard Product, available through Molex franchised distributors
 Recommended wire range assumes stranded wire