



00 - 9162 - 006 - 006 - 080

PREFIX

SERIES

NUMBER OF CONTACTS

SIM TYPE

CODE	SIM TYPE
006	SMT LOW PROFILE SIM PURE TIN CONTACTS

CONNECTOR HEIGHT

XXX REFERS TO CONNECTOR HEIGHT 080-250

CODE	CONNECTOR HEIGHT	SHEET NUMBER
080	0.80mm	SHEET 2
160	1.60mm	SHEET 3
240	2.40mm	SHEET 3

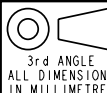
0.90mm - 2.50mm CONNECTOR HEIGHTS
CAN BE MADE TO CUSTOMER REQUIREMENTS

ELCO EUROPE (A DIVISION OF AVX LTD.) CONFIDENTIAL PROPRIETARY
THE DRAWING ON THIS PRINT AND INFORMATION THEREWITH ARE
PROPRIETARY TO ELCO EUROPE (A DIVISION OF AVX LTD.) AND
SHALL NOT BE USED OR DISCLOSED IN WHOLE OR IN PART
WITHOUT ELCO EUROPE'S WRITTEN CONSENT.

ELCO EUROPE (A DIVISION OF AVX LTD.) CONFIDENTIAL PROPRIETARY
THE DRAWING ON THIS PRINT AND INFORMATION THEREWITH ARE
PROPRIETARY TO ELCO EUROPE (A DIVISION OF AVX LTD.) AND
SHALL NOT BE USED OR DISCUSSED IN WHOLE OR IN PART
WITHOUT ELCO EUROPE'S WRITTEN CONSENT.

Release No.
History
101673
101733
101745
101759
102071
102211

TOLERANCE
0 ± 0.5
0.0 ± 0.2
0.00 ± 0.1
ANG ± 1°
∅ ± 0.1

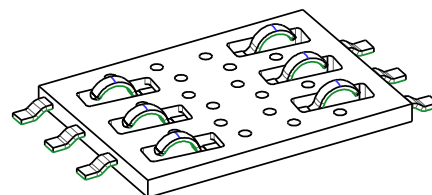
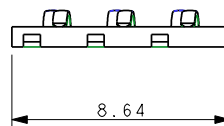
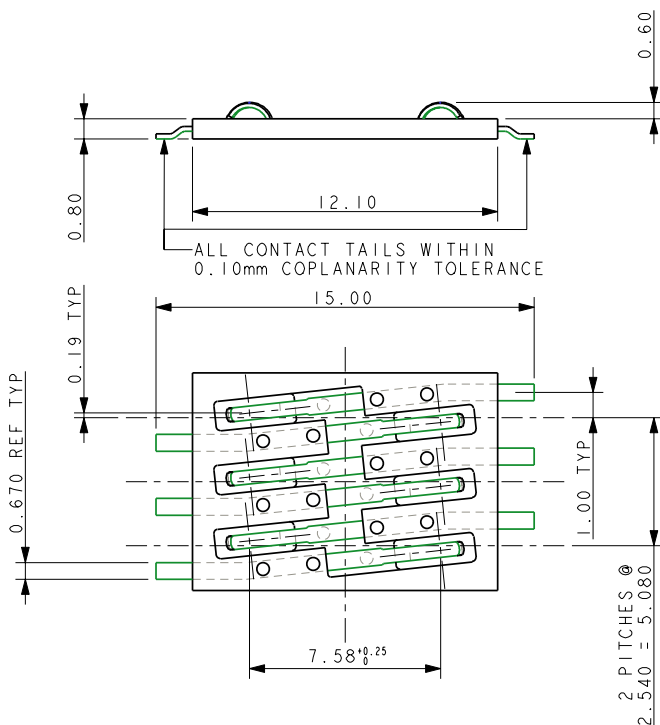


ELCO
© COPYRIGHT ELCO EUROPE
NOT TO BE DISCLOSED OR COPIED
WITHOUT WRITTEN PERMISSION

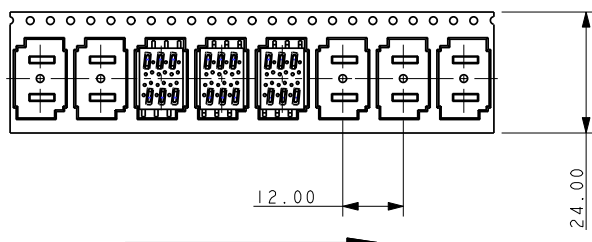
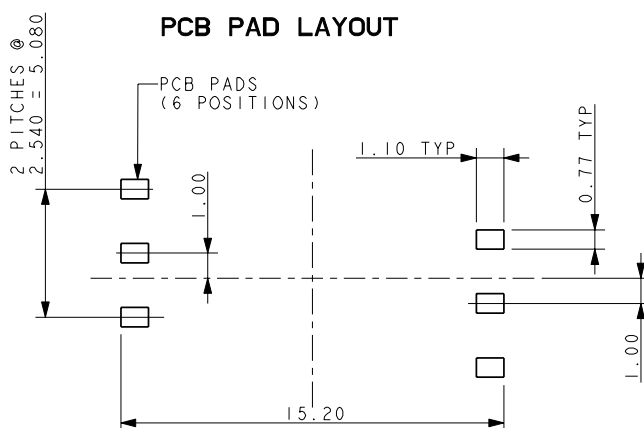
Drawn
DMC1
Size
CV

Description
LOW PROFILE SIM
Part Number
00-9162-01S-000 SHEET 1 OF 3

DATE
11-Oct-04
Issue
12



PCB PAD LAYOUT

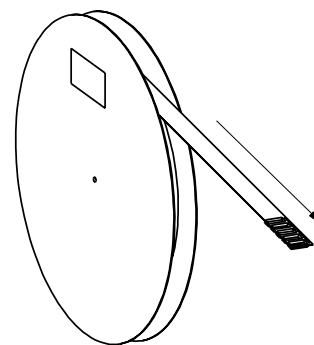


ELCO EUROPE (A DIVISION OF AVX LTD.) CONFIDENTIAL PROPRIETARY
THE DRAWING ON THIS PRINT AND INFORMATION THEREWITH ARE
PROPRIETARY TO ELCO EUROPE (A DIVISION OF AVX LTD.) AND
SHALL NOT BE USED OR DISCLOSED IN WHOLE OR IN PART
WITHOUT ELCO EUROPE'S WRITTEN CONSENT.

CONNECTOR HEIGHT 0.80mm

PACKING DETAILS	
REEL QTY	1300
LEADER	500mm
TRAILER	500mm
REELS/BOX	5
PACK QTY	6500

PACKING DETAILS (SHOWING USER DIRECTION OF FEED)



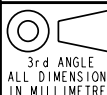
NOTES

1. SALES DRAWING FOR SLIDE IN SIM READER.
2. FOR PRODUCT SPECIFICATION REFER TO ELCO SPEC: 201-01-084.
3. GENERAL TOLERANCE ± 0.20 (UNLESS OTHERWISE STATED).
4. INSULATOR MATERIAL NYLON GLASS-FILLED.
5. CONTACT MATERIAL COPPER ALLOY:- SIM CONTACTS NOSE PLATED WITH GOLD.
SMT PADS PLATED WITH TIN/LEAD.

ELCO EUROPE (A DIVISION OF AVX LTD.) CONFIDENTIAL PROPRIETARY
THE DRAWING ON THIS PRINT AND INFORMATION THEREWITH ARE
PROPRIETARY TO ELCO EUROPE (A DIVISION OF AVX LTD.) AND
SHALL NOT BE USED OR DISCLOSED IN WHOLE OR IN PART
WITHOUT ELCO EUROPE'S WRITTEN CONSENT.

Release No.
History
101673
101733
101745
101759
102071
102211

TOLERANCE
0 \pm 0.5
0.0 \pm 0.2
0.00 \pm 0.1
ANG \pm 1°
 ϕ \pm 0.1



ELCO

© COPYRIGHT ELCO EUROPE
NOT TO BE DISCLOSED OR COPIED
WITHOUT WRITTEN PERMISSION

Drawn
DMC1

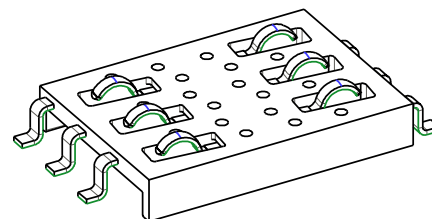
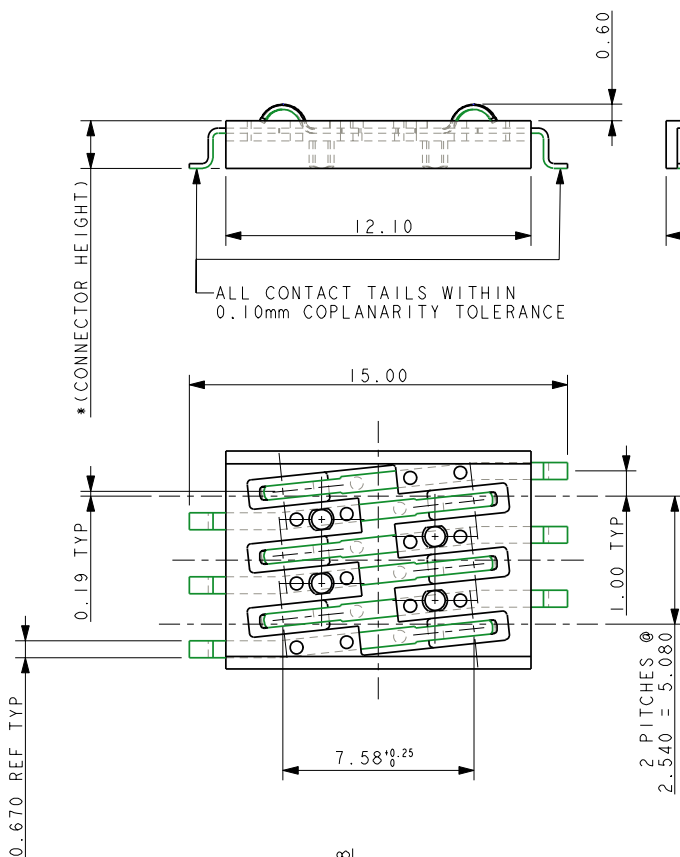
Size
CV

Description
LOW PROFILE SIM

Part Number
00-9162-01S_000 SHEET 2 OF 3

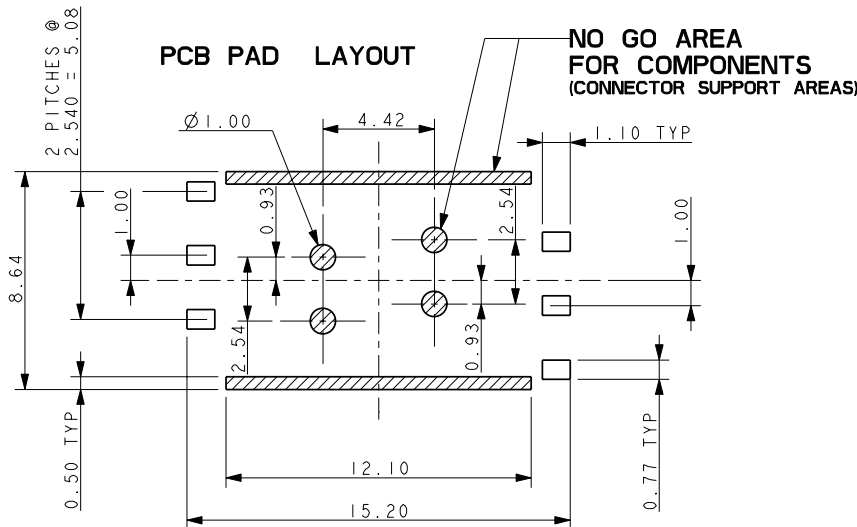
DATE
11-Oct-04

Issue
12



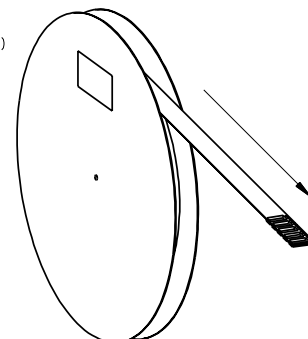
ELCO EUROPE (A DIVISION OF AVX LTD.) CONFIDENTIAL PROPRIETARY
THE DRAWING ON THIS PRINT AND INFORMATION THEREWITH ARE
PROPRIETARY TO ELCO EUROPE (A DIVISION OF AVX LTD.) AND
SHALL NOT BE USED OR DISCUSSED IN WHOLE OR IN PART
WITHOUT ELCO EUROPE'S WRITTEN CONSENT.

PCB PAD LAYOUT



PACKING DETAILS (SHOWING USER DIRECTION OF FEED)

PACKING DETAILS	
REEL QTY	1300
LEADER	500mm
TRAILER	500mm
REELS/BOX	5
PACK QTY	6500



* OUTLINE DRAWING FOR SIM
HEIGHTS 0.90mm - 2.50mm

NOTES

1. SALES DRAWING FOR SLIDE IN SIM READER.
2. FOR PRODUCT SPECIFICATION REFER TO ELCO SPEC: 201-01-084.
3. GENERAL TOLERANCE ± 0.20 (UNLESS OTHERWISE STATED).
4. INSULATOR MATERIAL NYLON GLASS-FILLED.
5. CONTACT MATERIAL COPPER ALLOY:- SIM CONTACTS NOSE PLATED WITH GOLD.
SMT PADS PLATED WITH TIN/LEAD.

ELCO EUROPE (A DIVISION OF AVX LTD.) CONFIDENTIAL PROPRIETARY
THE DRAWING ON THIS PRINT AND INFORMATION THEREWITH ARE
PROPRIETARY TO ELCO EUROPE (A DIVISION OF AVX LTD.) AND
SHALL NOT BE USED OR DISCUSSED IN WHOLE OR IN PART
WITHOUT ELCO EUROPE'S WRITTEN CONSENT.

Release No.
History
101673
101733
101745
101759
102071
102211

TOLERANCE
0 \pm 0.5
0.0 \pm 0.2
0.00 \pm 0.1
ANG \pm 0°
Ø \pm 0.1

3rd ANGLE
ALL DIMENSIONS
IN MILLIMETRES

ELCO

© COPYRIGHT ELCO EUROPE
NOT TO BE DISCLOSED OR COPIED
WITHOUT WRITTEN PERMISSION

Drawn
DMC1
Size
CV

Description
LOW PROFILE SIM

Part Number
00-9162-01S-000 SHEET 3 OF 3

DATE
11-Oct-04
Issue
12