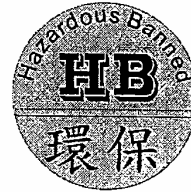




**CUSTOMER: S068**

**PART NUMBER:**



**APPROVAL  
SHEET**

MASTER  
T3714ST

FOR

SWITCHING ADAPTER

MODEL NO.

**DSA-0051-03 FUK      50100F**

ORDER NO: YW3-00443

承認書確認后請簽回一份

CUSTOMER APPROVED SIGNATURE

--	--	--	--

**DEE VAN ENTERPRISE CO., LTD (Head-Quarter)**

NO. 5, PAO-KAO RD, HSIN-TIEN, TAIPEI COUNTY, TAIWAN, R.O.C

TEL: +886-2-2917-7002 (12 LINES), FAX: +886-2-2915-4370, +886-2-2918-7244

**DEE VAN ELECTRONICS (SHEN ZHEN) CO., LTD (Factory)**

5 th Industrial District, Gong Ming Town, Baoan County, Shen Zhen, Guang Dong, CHINA

## 1. SPECIFICATION

-- 1 / 4

### 0. REVISION CHANGE DESCRIPTION

Revision	Description	Date
A	Initial release	2006,07,19

### 1. GENERAL DESCRIPTION

This specification defines the input, output, performance characteristics, environment, noise and safety requirements for a 5 watts switching type power adapter. The adapter input/output are full range AC input and +5V DC with 5 watts maximum output.

### 2. INPUT REQUIREMENT

#### 2-1 AC INPUT VOLTAGE

MINIMUM	NOMINAL	MAXIMUM
90 VAC	100-240 VAC	264 VAC

#### 2-2 AC INPUT FREQUENCY

MINIMUM	NOMINAL	MAXIMUM
47 Hz	50 / 60 Hz	63 Hz

#### 2-3 AC INPUT CURRENT

NOMINAL AC INPUT VOLTAGE	0.2 A maximum
--------------------------	---------------

#### 2-4 AC INRUSH CURRENT

AT FULL LOAD, 25 DEGREE C, COLD START

NOMINAL AC INPUT VOLTAGE	No damage shall be occurred and the input fuse shall not be blown up.
--------------------------	---

#### 2-5 CONFIGURATION

Wall-mount type, UK-pin, 3 Conductors, < Live, Neutral >

#### 2-6 POWER CONSUMPTION ON POWER SAVING MODE

LOAD	INPUT CONDITION	INPUT POWER REQUIREMENT
0 A	115 VAC 60 Hz	1 W maximum
0 A	230 VAC 50 Hz	2 W maximum

**1.SPECIFICATION**

-- 2 / 4

**3. OUTPUT REQUIREMENT**

3-1	DC OUTPUT VOLTAGE	+ 5.0 V
3-2	MINIMUM LOAD CURRENT	0 A
3-3	NOMINAL LOAD CURRENT	1 A
3-4	NOMINAL OUTPUT POWER	5 W
3-5	TOTAL OUTPUT REGULATION	+/-5 %
3-6	LINE REGULATION	+/-2%
3-7	RIPPLE AND NOISE	100 mVp-p maximum At 20 MHz, and output parallel with 0.1uF & 10uF capacitors to ground Temperature at 25 °C, At nominal input voltage
3-8	EFFICIENCY	60% minimum At nominal input voltage and full load
3-9	HOLD-UP TIME	5 mS minimum At nominal input AC voltage and full load
3-10	TURN-ON DELAY	2 Seconds maximum
3-11	PROTECTION	
	OVER-CURRENT PROTECTION	1.6 A maximum with auto-recovery function
	OVER-VOLTAGE PROTECTION	8.5 VDC maximum with ZENER clamp
	SHORT-CIRCUIT PROTECTION	The adapter shall not be damaged by short the DC output to Ground.
3-12	REMARK	Unless otherwise specification output load Must set at CR mode.

**4. MECHANICAL REQUIREMENT**

4-1 DIMENSION

55 (L) \* 50 (W) \* 47.5 (H) mm maximum

4-2 WEIGHT

90 g maximum

4-3 INPUT PLUG TYPE

Wall-mount type, UK-pin, 2 Conductors, < Live, Neutral >

4-4 OUTPUT CORD

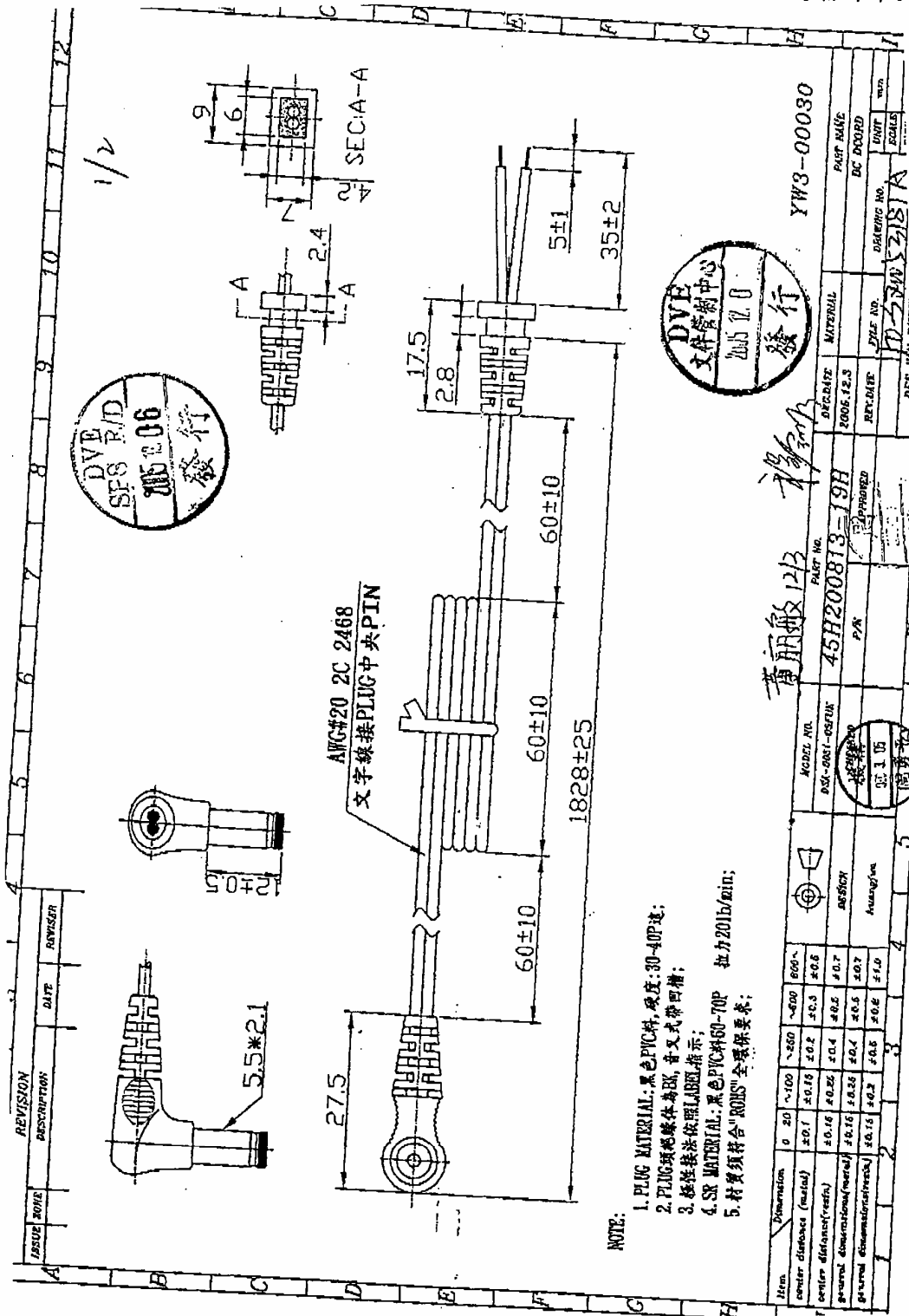
WIRE: 20AWG/2C 2468, 1828mm

PLUG: JACK PLUG5.5\*2.1\*12mm



**3.DC OUTPUT CORD DRAWING**

- 1 / 1



- NOTE:
1. PLUG MATERIAL: 黑色PVC料, 硬度: 30-40P; 達;
  2. PLUG 環形線體為E型, 音叉式帶四槽;
  3. 線徑標註係依照ANSI指示;
  4. SR MATERIAL: 黑色PVC料60-70P 拉力20lb/min;
  5. 材質須符合"ROHS"全球保要求;

REV. NO.	DATE	REVISION	DESCRIPTION
1			
2			
3			
4			
5			

MODEL NO.	45H200813-19H	PART NO.	YW3-00030
DATE	2006.12.3	REF. DATE	
DESIGNER	黃麗敏	DR. NO.	1053181A
CHECKER		DC BOARD	
APPROVED		SCALE	

Item	Dimension	0	20	~100	~250	~500	1000
center distance (metal)	±0.1	±0.15	±0.2	±0.3	±0.5	±0.8	±1.0
center distance (resin)	±0.15	±0.2	±0.4	±0.6	±0.8	±1.0	±1.5
overall dimension (metal)	±0.15	±0.2	±0.3	±0.5	±0.7	±1.0	±1.5
overall dimension (resin)	±0.2	±0.3	±0.5	±0.8	±1.0	±1.5	±2.0



**4. PRODUCT OUTLINE DRAWING**

-- 1 / 1

