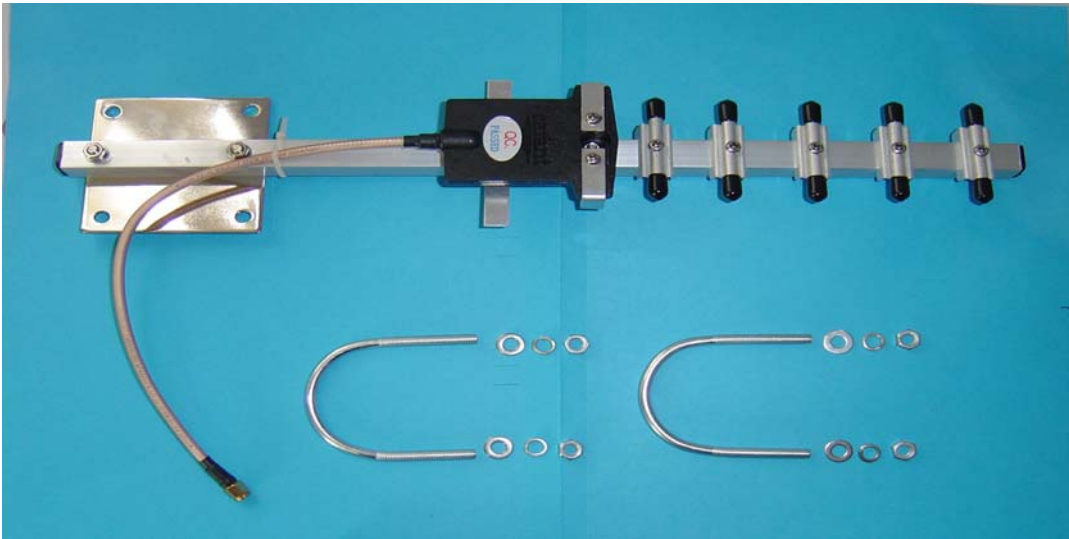


LPRS 2.4GHz Yagi Antenna

- 2400 to 2500MHz Frequency Range
- 100MHz Bandwidth
- 9dbi gain.
- Vertical or Horizontal Polarisation.
- 50Ω Input Impedance
- 100W maximum power.
- SMA connector.
- 7 Elements.
- Length 385mm
- Fixing Plate 75 x 75mm

Product Order Codes

Description	Order Code
2.4GHz YAGI Antenna	ANT-2.4G Yagi

Please contact the sales office for availability and other variants of the standard product.

Document History

Issue	Date	Revision
1-0	MAY 2006	Preliminary

Copyright

The information contained in this data sheet is the property of Low Power Radio Solutions Ltd and copyright is vested in them with all rights reserved. Under copyright law this documentation may not be copied, photocopied, reproduced, translated or reduced to any electronic medium or machine-readable form in whole or in part without the written consent of Low Power Radio Solutions Ltd.

Copyright law also protects the circuitry and design of the modules.

Disclaimer

Low Power Radio Solutions Ltd has an on going policy to improve the performance and reliability of their products; we therefore reserve the right to make changes without notice. The information contained in this data sheet is believed to be accurate however we do not assume any responsibility for errors or any liability arising from the application or use of any product or circuit described herein. This data sheet neither states nor implies warranty of any kind, including fitness for any particular application.



"Making radio work. .for YOU"



For further information or technical assistance please contact:

Tel: +44 (0)1993 709418
Fax: +44 (0)1993 708575
Web: <http://www.lprs.co.uk>
Email: info@lprs.co.uk

Web: <http://www.easy-radio.co.uk>

The above address is a dedicated web site for Easy-Radio

Low Power Radio Solutions Ltd

Two Rivers Industrial Estate
Station Lane
Witney
Oxon
OX28 4BH
England