

Installation Instructions for the **MICRO SWITCH 40PC Series 1 psi Miniature Signal Conditioned Pressure Sensor**

ISSUE 1
PK 80036

⚠ WARNING

PERSONAL INJURY

- DO NOT USE these products as safety or emergency stop devices, or in any other application where failure of the product could result in personal injury.

Failure to comply with these instructions could result in death or serious injury.

GENERAL INFORMATION

40PC Series miniature pressure sensors are fully compensated and amplified. The 0.5 to 4.5 V analog output voltage signal is linearly proportional to input pressure.

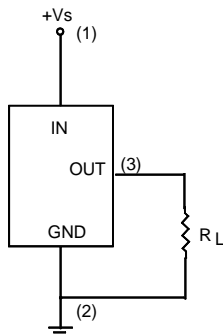
The miniature 6-pin DIP package mounts easily on printed circuit boards. Pin 1 is clearly indicated by the square corner. The 3 pins opposite the 3 active pins are inactive and may be clipped off if desired.

SOLDERING/ASSEMBLY

Limit soldering to 315°C (600°F) maximum for 10 seconds maximum. Leads must be adequately supported during any forming/shearing operation to ensure that the leads are not stressed inside the plastic case.

Clean appropriately in accordance with applicable safety procedures

ELECTRICAL CONNECTION



NOTES:

1. Square corner marks pin 1 (Vs).
2. Input and output share common ground.
3. 1 mmHg = 0.0193 psi.

SPECIFICATIONS

Pressure Range	-50 to +50 mmHg
Overpressure	170 mmHg max.
Supply Voltage	5 VDC
Supply Current	10 mA max.
Output Source Current	0.5 mA max.
Output Sink Current	1.0 mA max.
Short Circuit Limit	May be shorted indefinitely
Operating Temperature	-45 to +85°C (-49 to +185°F)
Storage Temperature	-45 to +85°C (-49 to +185°F)
Media Compatibility	Limited to those media which will not attack invar, copper, silicon, stainless steel, glass and solder
Null (0 psig)	2.50 ± 0.05 VDC
Full Scale (+ 50mm Hg)	4.50 ± .12 VDC
Full Scale (- 50mm Hg)	0.50 VDC Typ.
Span	4.00 VDC Typ.
Sensitivity	40.0 mV/mmHg Typ.
Linearity (B.F.S.L.)*	0.80% Span, Max.
Hysteresis & Repeatability	0.15% Span, Typ.

*Best Fit Straight Line



CAUTION
ELECTROSTATIC
SENSITIVE
DEVICES
DO NOT OPEN OR HANDLE
EXCEPT AT A
STATIC FREE WORKSTATION



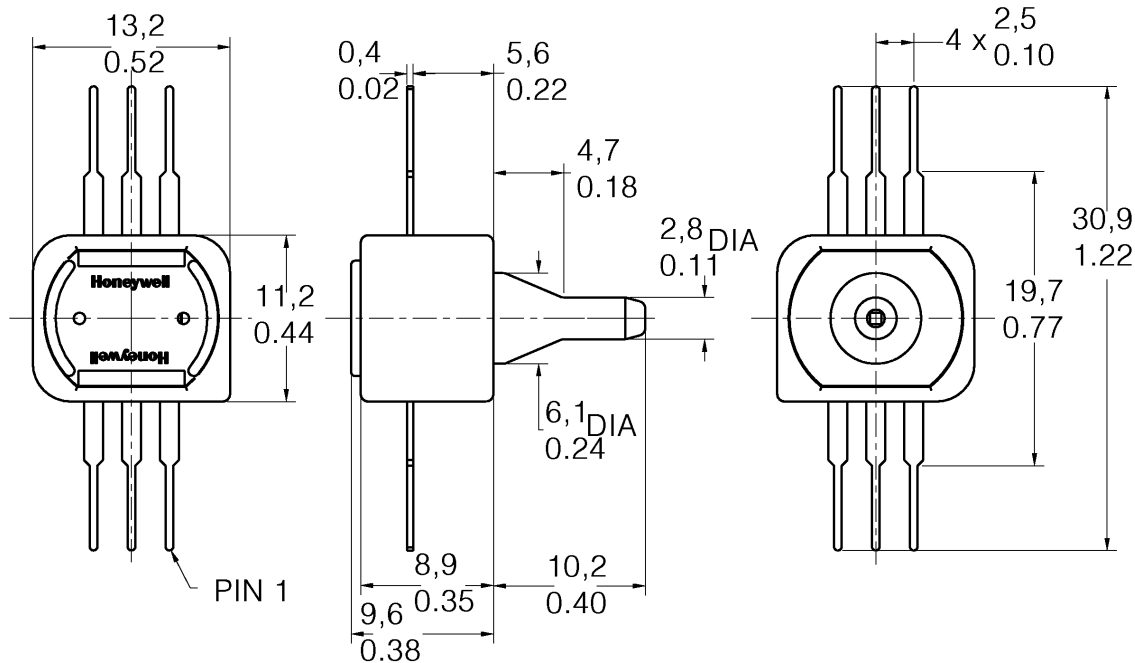
**ESD SENSITIVITY:
CLASS I**

CATALOG LISTINGS

- 40PC001B1A
- 40PC001B2A
- 40PC001B3A

MOUNTING DIRECTIONS (for reference only)

mm/in.



WARRANTY/REMEDY

Honeywell warrants goods of its manufacture as being free of defective materials and faulty workmanship. Contact your local sales office for warranty information. If warranted goods are returned to Honeywell during the period of coverage, Honeywell will repair or replace without charge those items it finds defective. The foregoing is Buyer's sole remedy and is **in lieu of all other warranties, expressed or implied, including those of merchantability and fitness for a particular purpose.**

For application assistance, current specifications, pricing or name of the nearest Authorized Distributor, contact a nearby sales office. Or call:

1-800-537-6945 USA
 1-800-737-3360 Canada
 1-815-235-6847 International
FAX
 1-815-235-6545 USA

INTERNET

<http://www.honeywell.com/sensing>
info@micro.honeywell.com

Specifications may change without notice. The information we supply is believed to be accurate and reliable as of this printing. However, we assume no responsibility for its use.

While we provide application assistance, personally and through our literature, it is up to the customer to determine the suitability of the product in the application.



Honeywell

MICRO SWITCH

Honeywell Inc.
 11 West Spring Street
 Freeport, Illinois 61032



Printed with Soy Ink
 on 50% Recycled Paper