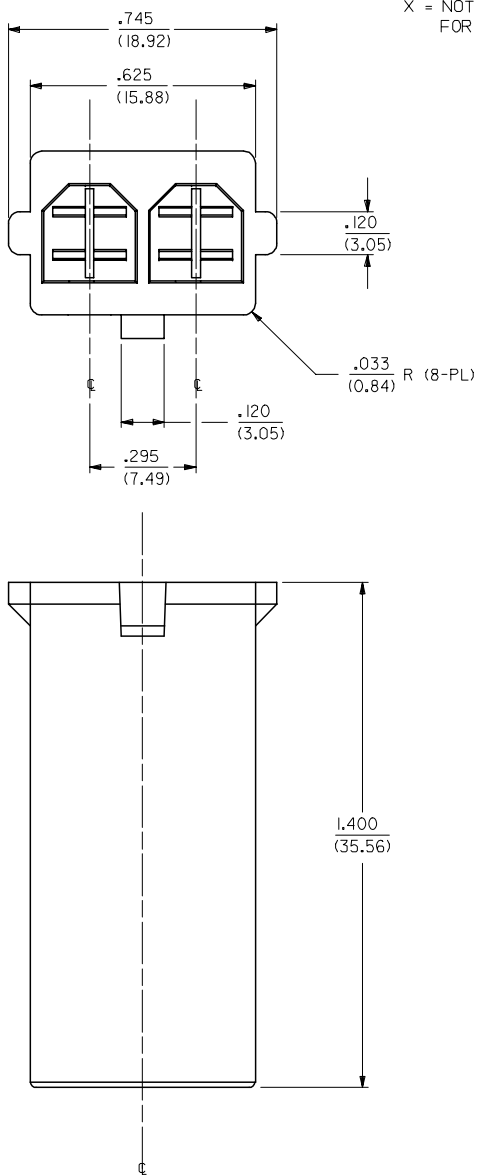


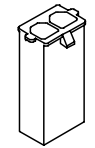
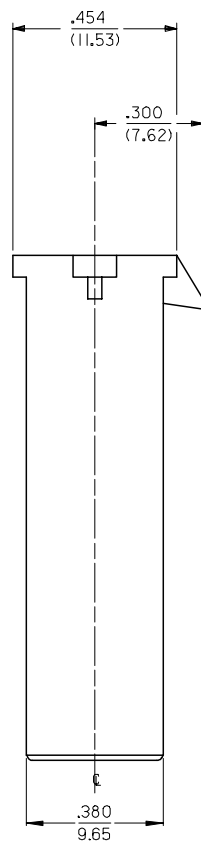
13 12 11 10 9 8 7 6 5 4 3 2 1



X = NOT RELEASED FOR PRODUCTION

	ITEM NUMBER	MATERIAL (SEE NOTE 1)	COLOR
	43180-1002	A	NATURAL
X	43180-2002	B	BLACK
	OBSOLETE	43180-3002	A
	43180-4002	A	BLUE
	43180-5002	C	BLACK

- NOTES:
- MATERIAL: A: NYLON PA66, 94V-2, COLOR: SEE CHART.
B: NYLON, PA 66/6, 94V-0, COLOR: BLACK
C: UL94V-0, PA6 NYLON, IEC 60335-1, 4TH EDITION GLOW WIRE CAPABLE.
 - FINISH: NONE
 - PRODUCT SPECIFICATION: PSX-43335-9999.
 - PACKAGING SPECIFICATION: PK-43180-001.
 - THIS CONNECTOR HOUSING FOR USE WITH 43178-**** TERMINALS.
 - THIS CONNECTOR HOUSING WILL MATE TO 43335-****, 43179-***2, AND 44441-***2 HOUSINGS.
 - ALL DIMENSIONS ARE FOR REFERENCE ONLY.
 - PARTS CONFORM TO CLASS B REQUIREMENTS OF COSMETIC SPECIFICATION PS-45499-002 EXCEPT MATERIAL OPTION 'C' MEETS CLASS 'C' REQUIREMENTS FOR SINK AND DISCOLORATION.



SD-43180-*002
SCALE 2:1

ADD MAT'L C & P/N EC NO: UCP2008-0135 DRWN:LSCHM1DT 2007/07/25 CHKD:LSCHM1DT 2007/07/27 APPR:FSM1TH 2007/07/27	QUALITY SYMBOLS 	GENERAL TOLERANCES (UNLESS SPECIFIED)		DIMENSION STYLE IN/MM		SCALE 4:1	DESIGN UNITS INCH	THIRD ANGLE PROJECTION		
		4 PLACES ± .005	± .005	DRAWN BY	DATE	TITLE				
		3 PLACES ± .010	± .010	MAB	1995/08/09	2-CIR PLUG HOUSING				
		2 PLACES ± 0.25	± .015	CHECKED BY	DATE	.125/(3.18)X .020/(0.51)				
1 PLACE ± 0.38	± .015	KBP	1995/08/09	FLAT BLADE SYS. - T.P.A.						
ANGULAR ±1/2°		APPROVED BY	DATE	MATERIAL NO.		DOCUMENT NO.		SHEET NO.		
		RAS	1995/08/09	SEE CHART		SD-43180-*002		1 OF 1		
DRAFT WHERE APPLICABLE MUST REMAIN WITHIN DIMENSIONS		THIS DRAWING CONTAINS INFORMATION THAT IS PROPRIETARY TO MOLEX INCORPORATED AND SHOULD NOT BE USED WITHOUT WRITTEN PERMISSION								

12 11 10 9 8 7 6 5 4 3 2 1