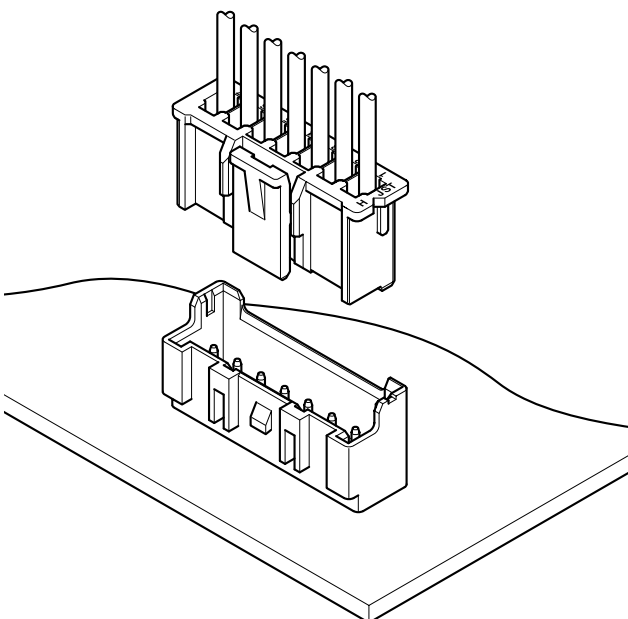
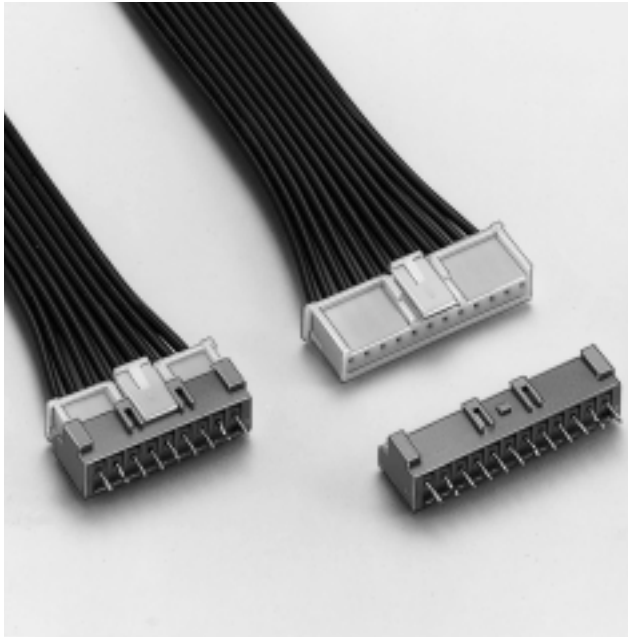


XA CONNECTOR

Disconnectable Crimp style connectors



Features

• Locking device

The housing has a locking device to securely hold the header, preventing accidental disconnection because of external forces that might result from the routing of wires during assembly process or of vibration.

• Solder crack preventive material

Header wafer is made of glass-filled PA66 nylon thus effective against the solder crack problem.

• Low insertion force

Header pins are round and reflow-treated, which provides low insertion force.

• Insertion guide mechanism

Header has housing insertion guides for easy and secure insertion.

• Applicable to automatic board mounting machine

Radial taped or stick-mounted headers are also available for automatic component insertion machine.

• Polarizing boss

Headers with polarizing bosses are also available.

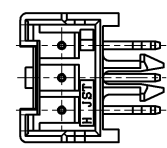
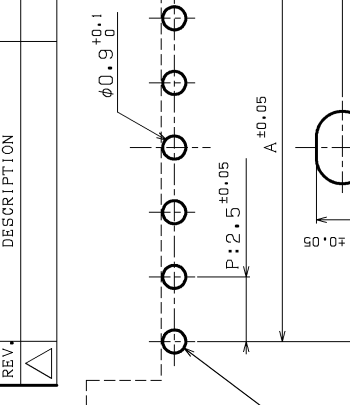
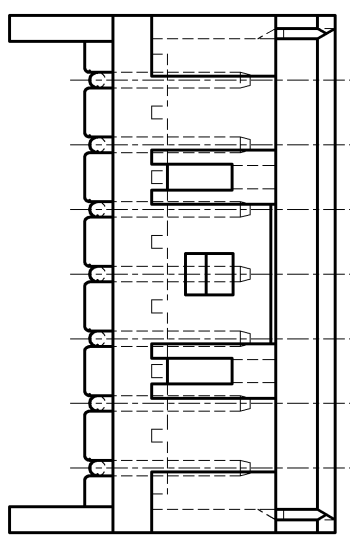
Specifications

- Current rating: 3A AC DC (AWG#20)
- Voltage rating: 250V AC DC
- Temperature range: -25°C to +85°C
(including temperature rise in applying electrical current)
- Relative humidity: 0 to 80%
- Contact resistance: Initial value/10m Ω max.
After environmental testing/20m Ω max.
- Insulation resistance: 1,000M Ω min.
- Withstanding voltage: 1,000V AC/minute
- Applicable wire: AWG #28 to #20
- Applicable PC board thickness: 1.6mm (.063")
- * Contact JST if Lead-Free product is required.
- * Refer to "General Instruction and Notice when using Terminals and Connectors" at the end of this catalog.
- * Contact JST for details.

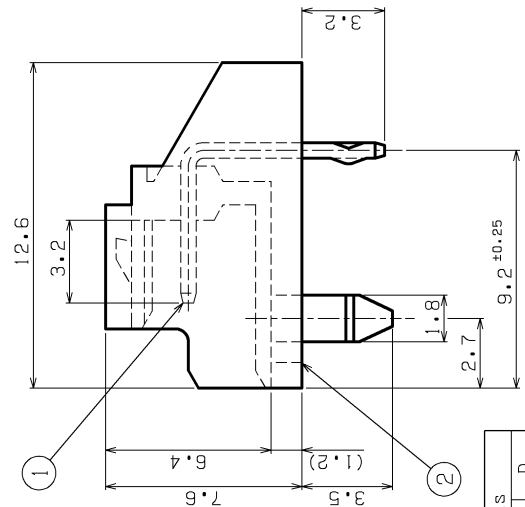
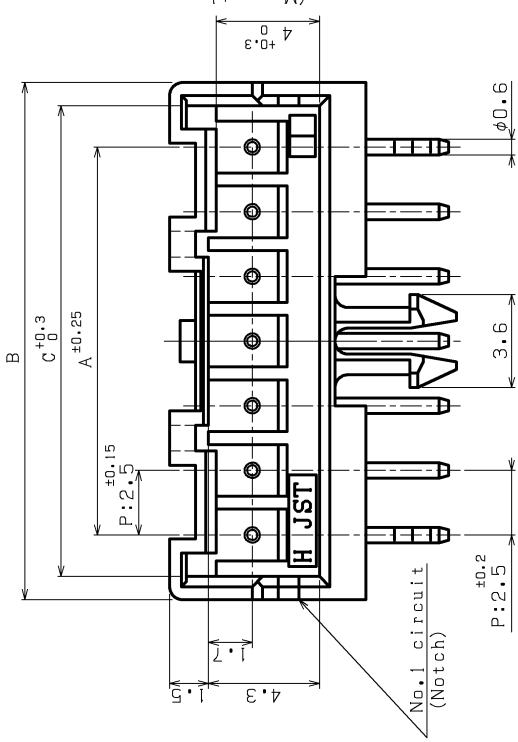
Standards

- Recognized E60389
- 1 Certified LR20812
- 2 R9851220

REV.	DESCRIPTION	DATE	DESIGNED
△			



Shape of 3-circuit



NOTE
1. Unless otherwise specified, tolerances are 0<L≤5.0 : ±0.3
5.0<L : ±0.4

Circuit	Dimensions			
	A	B	C	D
3	5.0	10.0	8.2	2.50
4	7.5	12.5	10.7	3.75
5	10.0	15.0	13.2	5.00
6	12.5	17.5	15.7	6.25
7	15.0	20.0	18.2	7.50
8	17.5	22.5	20.7	8.75
9	20.0	25.0	23.2	10.00
10	22.5	27.5	25.7	11.25
11	25.0	30.0	28.2	12.50
12	27.5	32.5	30.7	13.75
13	30.0	35.0	33.2	15.00
14	32.5	37.5	35.7	16.25

2	WAFER	66NYLON (G.F.)	COPPER-UNDERPLATED TIN-PLATED	UL94V-0, NATURAL
1	PIN	COPPER ALLOY	COPPER-UNDERPLATED TIN-PLATED	
No.	PART NAME	MATERIAL	SURFACE FINISH	REMARKS
SIZE	SCALE	PROJECTION	DATE	CUSTOMER
A3	METRIC 5:1	①	DEC.21.2004	
APPROVED	CHECKED	DESIGNED	DRAWN	SERIES NAME
S.K		T.S	A.M	XA CONNECTOR
				PART No.
				S () B-XASK-1 (LF) (SN)
				DRAWING No.
				KRD-35899
				RO



J.S.T.MFG.CO., LTD.