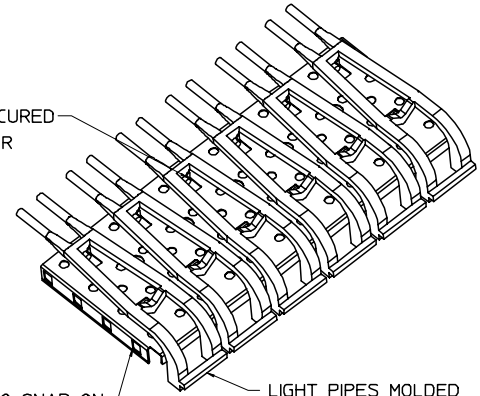
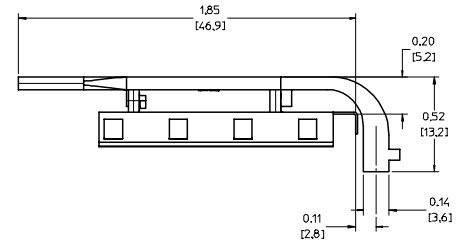
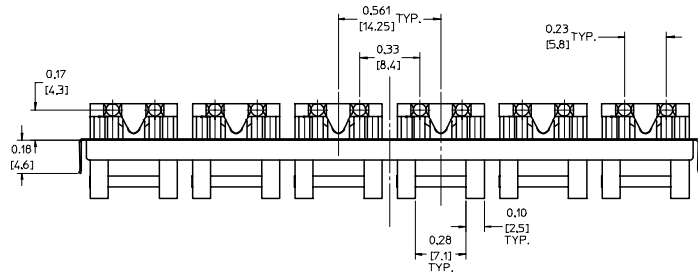


LIGHT PIPES SECURED TO METAL COVER



COVER DESIGNED TO SNAP ON THE SFP CAGE ASSEMBLY

LIGHT PIPES MOLDED WITH VO RATED MATERIAL

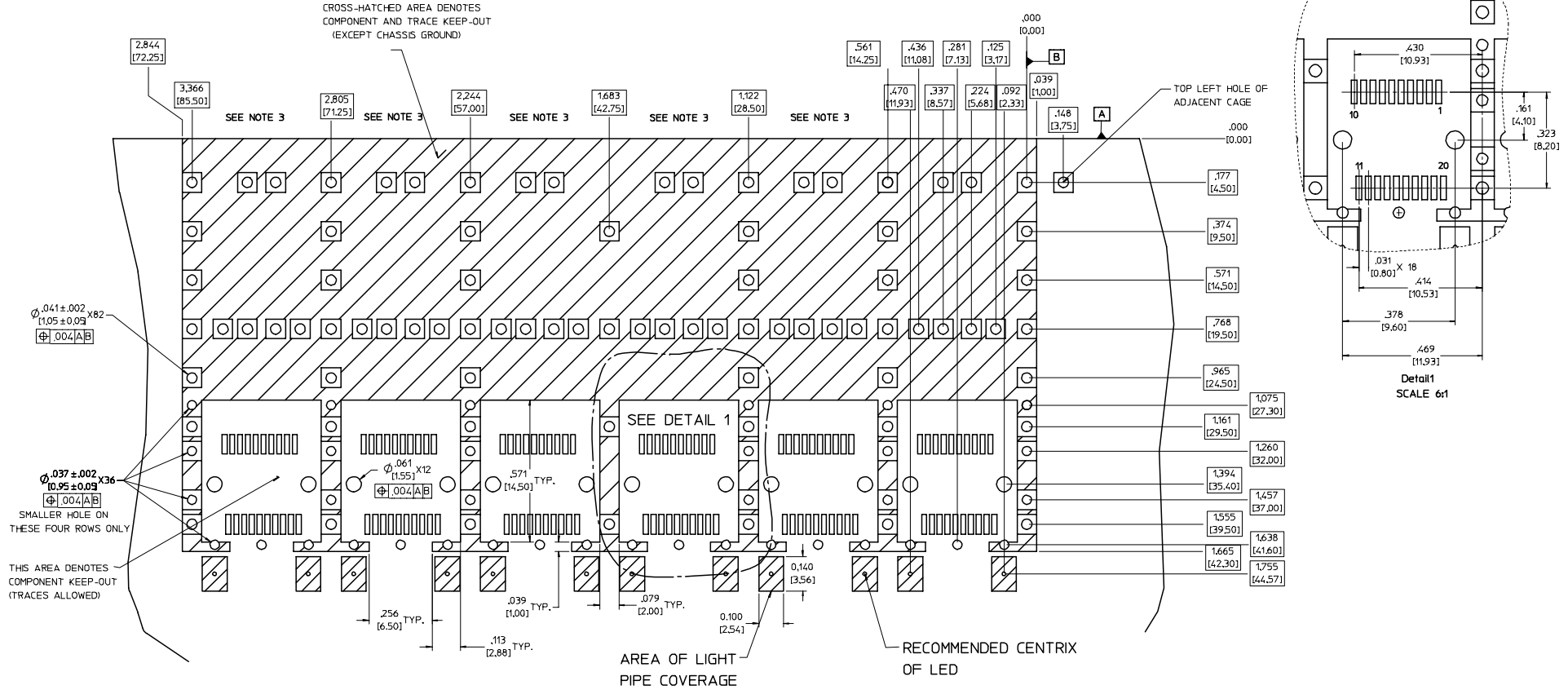


| ENTER DESCRIPTION EC NO: UST2006-0008 DRWN: KS IMONSON 2005/07/15 CHKD: BRUSSELL 2005/07/15 APPR: BRUSSELL 2005/07/25 | QUALITY SYMBOLS | GENERAL TOLERANCES (UNLESS SPECIFIED) | DIMENSION STYLE | SCALE | DESIGN UNITS | THIRD ANGLE PROJECTION | | | | | | | | | | | | |
|--|--|---|-----------------|------------|---|------------------------|-----------------|----------|-----------------|-------------|----------------|----------|------------|-------|---------------------------------------|-----|--------|--|
| | $\nabla=0$ $\nabla=0$ | <table border="1"> <tr><th>mm</th><th>INCH</th></tr> <tr><td>4 PLACES ± .005</td><td>± .005</td></tr> <tr><td>3 PLACES ± .013</td><td>± .01</td></tr> <tr><td>2 PLACES ± .025</td><td>± .01</td></tr> <tr><td>1 PLACE ± .025</td><td>± .01</td></tr> <tr><td>ANGULAR</td><td>± 1 °</td></tr> </table> | mm | INCH | 4 PLACES ± .005 | ± .005 | 3 PLACES ± .013 | ± .01 | 2 PLACES ± .025 | ± .01 | 1 PLACE ± .025 | ± .01 | ANGULAR | ± 1 ° | IN/MM | 3:1 | METRIC | |
| | mm | INCH | | | | | | | | | | | | | | | | |
| | 4 PLACES ± .005 | ± .005 | | | | | | | | | | | | | | | | |
| 3 PLACES ± .013 | ± .01 | | | | | | | | | | | | | | | | | |
| 2 PLACES ± .025 | ± .01 | | | | | | | | | | | | | | | | | |
| 1 PLACE ± .025 | ± .01 | | | | | | | | | | | | | | | | | |
| ANGULAR | ± 1 ° | | | | | | | | | | | | | | | | | |
| DESCRIPTION | <table border="1"> <tr><th>DRAWN BY</th><th>DATE</th></tr> <tr><td>KS IMONSON</td><td>2004/07/08</td></tr> <tr><th>CHECKED BY</th><th>DATE</th></tr> <tr><td>BRUSSELL</td><td>2004/07/08</td></tr> <tr><th>APPROVED BY</th><th>DATE</th></tr> <tr><td>BRUSSELL</td><td>2004/07/08</td></tr> </table> | DRAWN BY | DATE | KS IMONSON | 2004/07/08 | CHECKED BY | DATE | BRUSSELL | 2004/07/08 | APPROVED BY | DATE | BRUSSELL | 2004/07/08 | TITLE | 1X6 SFP LIGHT PIPE ASSEMBLY, BACK-TOP | | | |
| DRAWN BY | DATE | | | | | | | | | | | | | | | | | |
| KS IMONSON | 2004/07/08 | | | | | | | | | | | | | | | | | |
| CHECKED BY | DATE | | | | | | | | | | | | | | | | | |
| BRUSSELL | 2004/07/08 | | | | | | | | | | | | | | | | | |
| APPROVED BY | DATE | | | | | | | | | | | | | | | | | |
| BRUSSELL | 2004/07/08 | | | | | | | | | | | | | | | | | |
| REV | DRAFT WHERE APPLICABLE MUST REMAIN WITHIN DIMENSIONS | MATERIAL NO. | 747480001 | | DOCUMENT NO. | SD-74748-001 | | | | | | | | | | | | |
| | | SIZE | D | | MOLEX INCORPORATED THIS DRAWING CONTAINS INFORMATION THAT IS PROPRIETARY TO MOLEX INCORPORATED AND SHOULD NOT BE USED WITHOUT WRITTEN PERMISSION | | | | | | | | | | | | | |
| | | | | | | SHEET NO. 1 OF 5 | | | | | | | | | | | | |

PCB LAYOUT FOR BELLY TO BELLY MOUNTING

HOST CONNECTOR DETAIL

CROSS-HATCHED AREA DENOTES
COMPONENT AND TRACE KEEP-OUT
(EXCEPT CHASSIS GROUND)



$\phi .041 \pm .002$
 $[1.05 \pm 0.05]$ X82
 $\oplus .004 [A/B]$

$\phi .037 \pm .002$
 $[0.95 \pm 0.05]$ X36
 $\oplus .004 [A/B]$

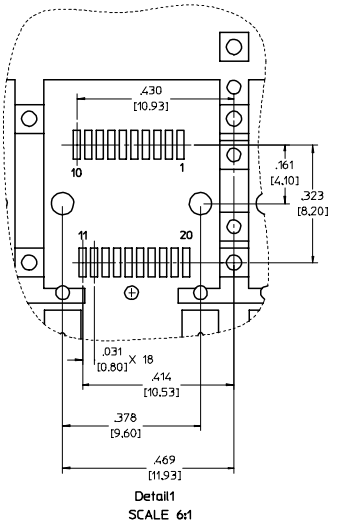
SMALLER HOLE ON
THESE FOUR ROWS ONLY

THIS AREA DENOTES
COMPONENT KEEP-OUT
(TRACES ALLOWED)

- NOTES:**
1. PADS AND VIAS GO TO CHASSIS GROUND.
 2. CAGE MOUNTING THRU HOLES (94 PLACES) TO BE PLATED.
 3. HOLE PATTERN REPEATS FOR EACH PORT.
SPACING BETWEEN PORTS IS 5.61 [14.25]

AREA OF LIGHT
PIPE COVERAGE

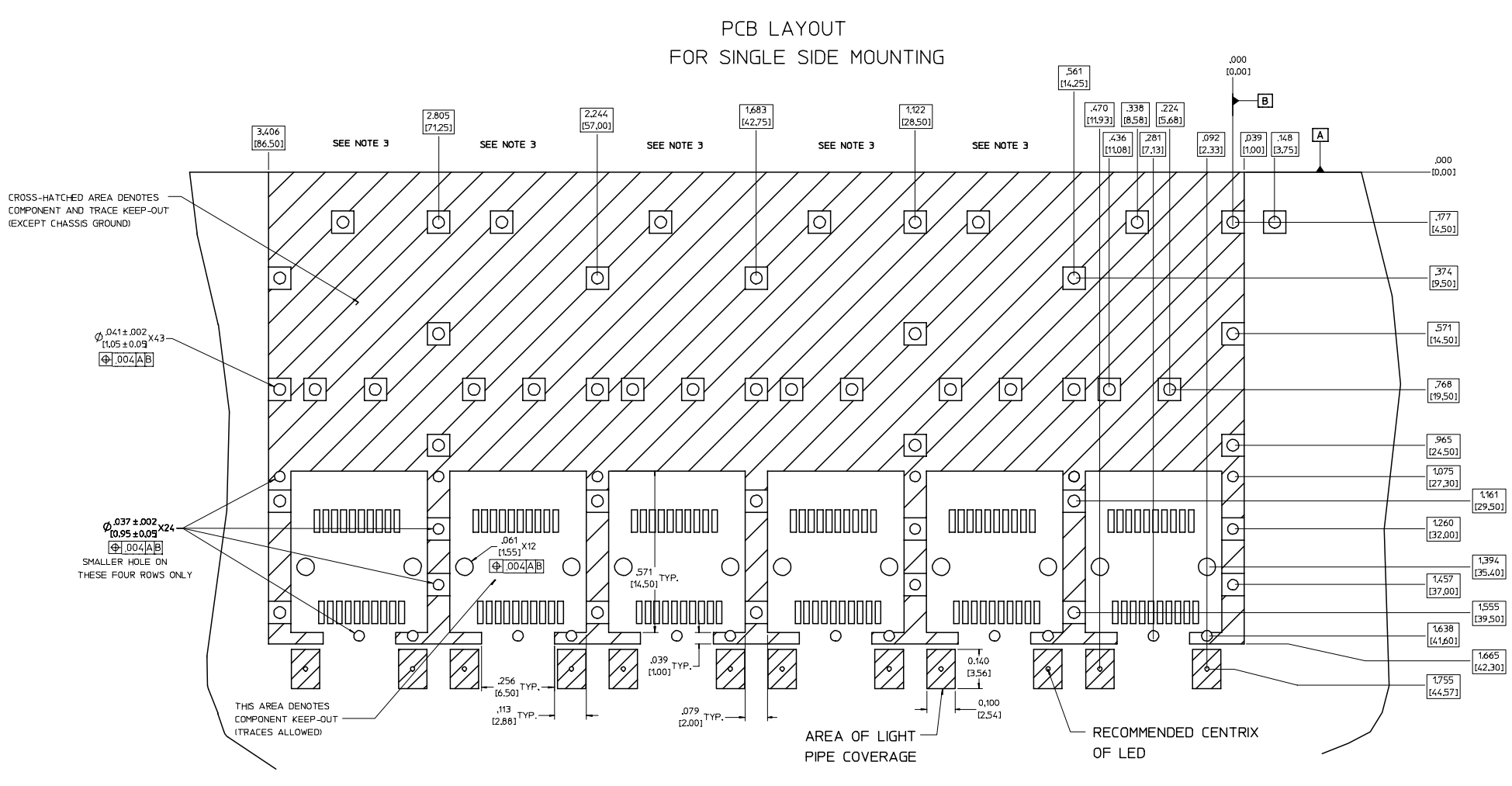
RECOMMENDED CENTRIX
OF LED



| | | | | | | |
|---|--|---------------------------------------|---|---|--------------|------------------------|
| ENTER DESCRIPTION EC NO: UST2006-0008 DR: WINKS MONSON 2005/07/15 CHK: BRUSSELL 2005/07/15 APPR: BRUSSELL 2005/07/25 | QUALITY SYMBOLS | GENERAL TOLERANCES (UNLESS SPECIFIED) | DIMENSION STYLE | SCALE | DESIGN UNITS | THIRD ANGLE PROJECTION |
| | $\nabla=0$ | mm INCH | IN/MM | 5:1 | METRIC | |
| | $\nabla=0$ | 4 PLACES ± --- ± --- | DRAWN BY DATE | TITLE 1X6 SFP LIGHT PIPE ASSEMBLY, BACK-TOP | | |
| | | 3 PLACES ± --- ± .005 | KS IMONSO 2004/07/08 | | | |
| | 2 PLACES ± 0.13 ± .01 | CHECKED BY DATE | MOLEX INCORPORATED DOCUMENT NO. SD-74748-001 SHEET NO. 2 OF 5 | | | |
| | 1 PLACE ± 0.25 ± --- | BRUSSELL 2004/07/08 | | | | |
| | ANGULAR ± 1 ° | APPROVED BY DATE | THIS DRAWING CONTAINS INFORMATION THAT IS PROPRIETARY TO MOLEX INCORPORATED AND SHOULD NOT BE USED WITHOUT WRITTEN PERMISSION | | | |
| | | BRUSSELL 2004/07/08 | | | | |
| | DRAFT WHERE APPLICABLE MUST REMAIN WITHIN DIMENSIONS | MATERIAL NO. | | | | |
| | | 747480001 | | | | |

PCB LAYOUT FOR SINGLE SIDE MOUNTING

20 19 18 17 16 15 14 13 12 11 10 9 8 7 6 5 4 3 2 1



CROSS-HATCHED AREA DENOTES COMPONENT AND TRACE KEEP-OUT (EXCEPT CHASSIS GROUND)

$\varnothing .041 \pm .002$
 $[1.05 \pm 0.05]$
 $[1.004]$ [A]B

$\varnothing .037 \pm .002$
 $[0.95 \pm 0.05]$
 $[0.004]$ [A]B
SMALLER HOLE ON THESE FOUR ROWS ONLY

THIS AREA DENOTES COMPONENT KEEP-OUT (TRACES ALLOWED)

AREA OF LIGHT PIPE COVERAGE

RECOMMENDED CENTRIX OF LED

- NOTES:**
1. PADS AND VIAS GO TO CHASSIS GROUND.
 2. CAGE MOUNTING THRU HOLES (49 PLACES) TO BE PLATED.
 3. HOLE PATTERN REPEATS FOR EACH PORT.
SPACING BETWEEN PORTS IS 14.25mm.

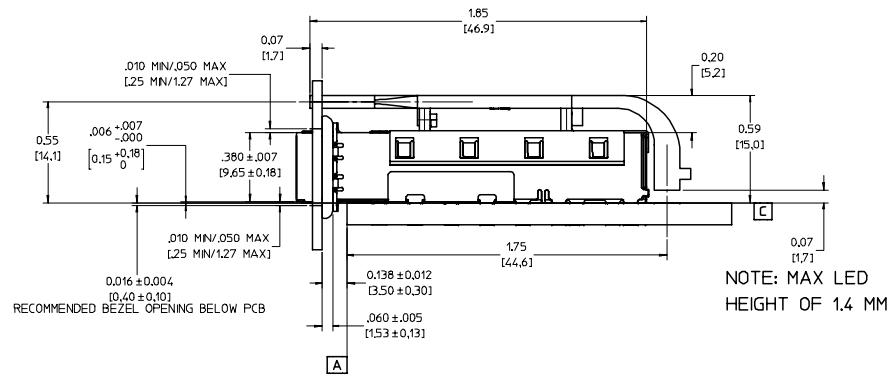
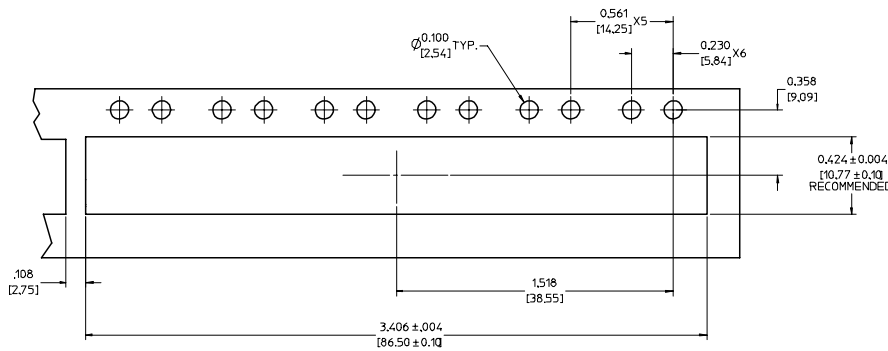
| ENTER DESCRIPTION EC NO: UST2006-0008 DRAWN BY: JORWANKS MONSON 2005/07/15 CHECKED BY: CHUCK BRUSSELL 2005/07/15 APPR: BRUSSELL 2005/07/25 | QUALITY SYMBOLS $\nabla=0$ $\nabla=0$ | GENERAL TOLERANCES (UNLESS SPECIFIED) <table border="1"> <tr> <th></th> <th>mm</th> <th>INCH</th> </tr> <tr> <td>4 PLACES ±</td> <td>---</td> <td>±---</td> </tr> <tr> <td>3 PLACES ±</td> <td>---</td> <td>±.005</td> </tr> <tr> <td>2 PLACES ±</td> <td>0.13</td> <td>±.01</td> </tr> <tr> <td>1 PLACE ±</td> <td>0.25</td> <td>±---</td> </tr> <tr> <td colspan="3">ANGULAR ± 1°</td> </tr> </table> | | mm | INCH | 4 PLACES ± | --- | ±--- | 3 PLACES ± | --- | ±.005 | 2 PLACES ± | 0.13 | ±.01 | 1 PLACE ± | 0.25 | ±--- | ANGULAR ± 1° | | | DIMENSION STYLE IN/MM | SCALE 6:1 | DESIGN UNITS METRIC | THIRD ANGLE PROJECTION |
|---|--|--|---------------------|----|------|------------|-----|------|------------|-----|-------|------------|------|------|-----------|------|------|--------------|--|--|--------------------------|--------------|------------------------|------------------------|
| | | mm | INCH | | | | | | | | | | | | | | | | | | | | | |
| | 4 PLACES ± | --- | ±--- | | | | | | | | | | | | | | | | | | | | | |
| | 3 PLACES ± | --- | ±.005 | | | | | | | | | | | | | | | | | | | | | |
| 2 PLACES ± | 0.13 | ±.01 | | | | | | | | | | | | | | | | | | | | | | |
| 1 PLACE ± | 0.25 | ±--- | | | | | | | | | | | | | | | | | | | | | | |
| ANGULAR ± 1° | | | | | | | | | | | | | | | | | | | | | | | | |
| DRAWN BY: KS IMONSO 2004/07/08 CHECKED BY: BRUSSELL 2004/07/08 APPROVED BY: BRUSSELL 2004/07/08 | TITLE 1X6 SFP LIGHT PIPE ASSEMBLY, BACK-TOP | | MOLEX INCORPORATED | | | | | | | | | | | | | | | | | | | | | |
| DRAFT WHERE APPLICABLE MUST REMAIN WITHIN DIMENSIONS | MATERIAL NO: 747480001 | DOCUMENT NO: SD-74748-001 | SHEET NO. 3 OF 5 | | | | | | | | | | | | | | | | | | | | | |
| THIS DRAWING CONTAINS INFORMATION THAT IS PROPRIETARY TO MOLEX INCORPORATED AND SHOULD NOT BE USED WITHOUT WRITTEN PERMISSION | | | | | | | | | | | | | | | | | | | | | | | | |

19 18 17 16 15 14 13 12 11 10 9 8 7 6 5 4 3 2 1

20 19 18 17 16 15 14 13 12 11 10 9 8 7 6 5 4 3 2 1

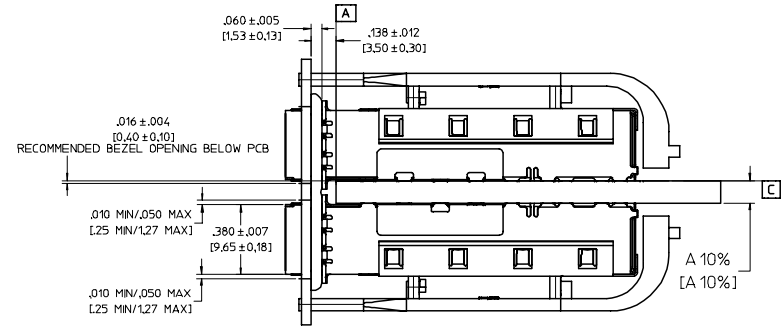
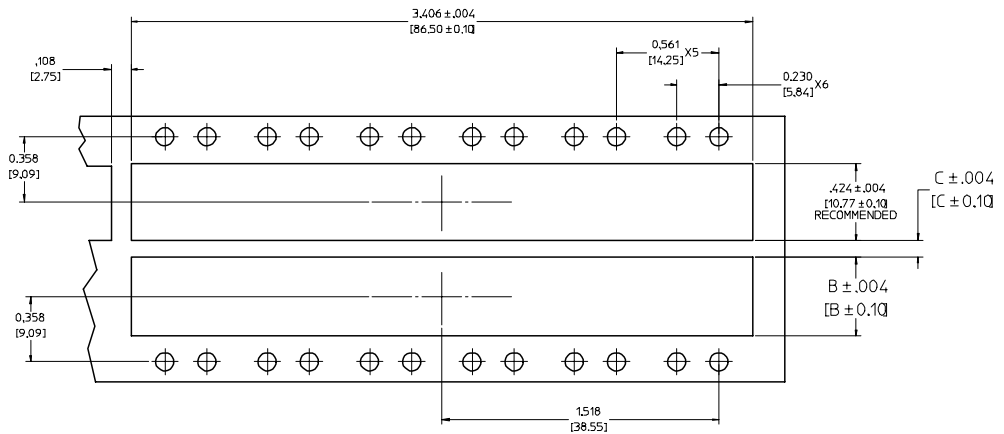
M
L
K
J
I
H
G
F
E
D
C
B
A

M
L
K
J
I
H
G
F
E
D
C
B
A



BEZEL AND BOARD POSITION DIMENSIONS FOR SINGLE SIDE MOUNTING

BEZEL AND BOARD POSITION DIMENSIONS FOR BELLY TO BELLY MOUNTING



NOTE: FOR A GIVEN BOARD THICKNESS (A), DIMENSIONS (B) AND (C) ARE DIRECTLY AFFECTED.

USE RECOMMENDED DIMENSIONS AND TOLERANCES TO AID IN DEVELOPING BEZEL OPENING.

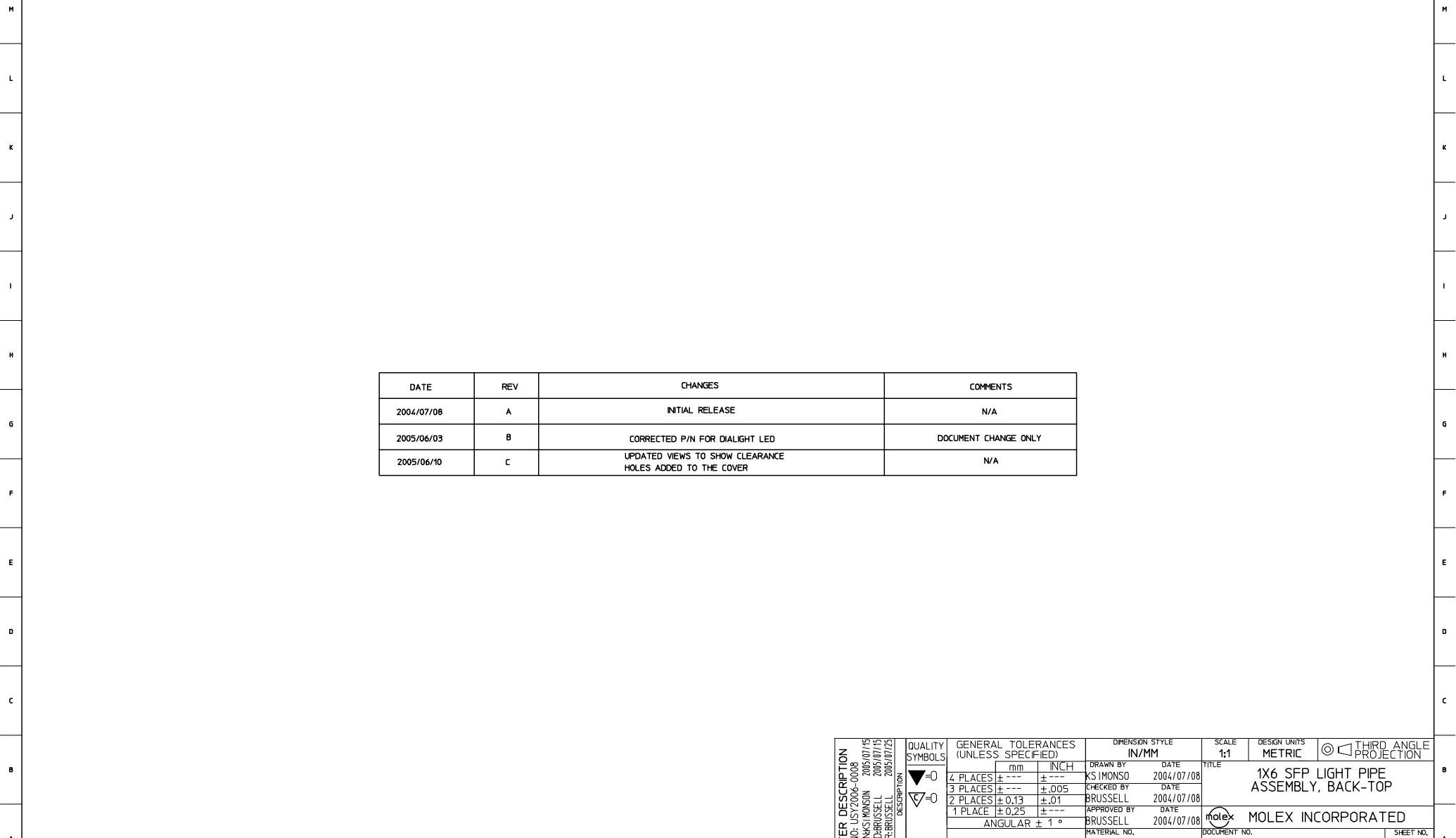
FOR EXAMPLE USING A BOARD THICKNESS OF .125" THE RECOMMENDED VALUES WOULD BE:

- A = .125/3.18 ± 10%
- B = .434/11.03 ± .004
- C = .088/2.23 ± .004

| | | | | | |
|--|---|---|---|--|--|
| ENTER DESCRIPTION EC NO: UST2006-0008 DRAWN BY: JORWANKI MONSON 2005/07/15 CHECKED BY: CHUCK BRUSSELL 2005/07/15 APPROVED BY: BRUSSELL 2005/07/25 | QUALITY SYMBOLS ▽=0 ▽=0 | GENERAL TOLERANCES (UNLESS SPECIFIED) mm INCH 4 PLACES ± --- ± --- 3 PLACES ± --- ± .005 2 PLACES ± 0.13 ± .01 1 PLACE ± 0.25 ± --- ANGULAR ± 1 ° | DIMENSION STYLE IN/MM DRAWN BY: KS IMONSO 2004/07/08 CHECKED BY: BRUSSELL 2004/07/08 APPROVED BY: BRUSSELL 2004/07/08 | SCALE: 4:1 DESIGN UNITS: METRIC THIRD ANGLE PROJECTION | TITLE: 1X6 SFP LIGHT PIPE ASSEMBLY, BACK-TOP MOLEX INCORPORATED |
| | DRAFT WHERE APPLICABLE MUST REMAIN WITHIN DIMENSIONS | MATERIAL NO: 747480001 SIZE: D | DOCUMENT NO: SD-74748-001 | SHEET NO: 4 OF 5 | |
| | THIS DRAWING CONTAINS INFORMATION THAT IS PROPRIETARY TO MOLEX INCORPORATED AND SHOULD NOT BE USED WITHOUT WRITTEN PERMISSION | | | | |
| | THIS DRAWING CONTAINS INFORMATION THAT IS PROPRIETARY TO MOLEX INCORPORATED AND SHOULD NOT BE USED WITHOUT WRITTEN PERMISSION | | | | |

19 18 17 16 15 14 13 12 11 10 9 8 7 6 5 4 3 2 1

20 19 18 17 16 15 14 13 12 11 10 9 8 7 6 5 4 3 2 1



| DATE | REV | CHANGES | COMMENTS |
|------------|-----|--|----------------------|
| 2004/07/08 | A | INITIAL RELEASE | N/A |
| 2005/06/03 | B | CORRECTED P/N FOR DIALIGHT LED | DOCUMENT CHANGE ONLY |
| 2005/06/10 | C | UPDATED VIEWS TO SHOW CLEARANCE HOLES ADDED TO THE COVER | N/A |

| | | | | | | | | | |
|--|--|--|------------|---------------------------------|------------------------------|--|------------------------|------------------------|---------------------|
| ENTER DESCRIPTION EC NO: UST2006-0008 DRAWN BY: JORWANKS IMONSON 2005/07/15 CHECKED BY: CHFKBRUSSELL 2005/07/15 APPR: BRUSSELL 2005/07/25 | QUALITY SYMBOLS | GENERAL TOLERANCES (UNLESS SPECIFIED) | | DIMENSION STYLE IN/MM | | SCALE 1:1 | DESIGN UNITS METRIC | THIRD ANGLE PROJECTION | |
| | | 4 PLACES ± --- ± --- 3 PLACES ± --- ± .005 2 PLACES ± 0.13 ± .01 1 PLACE ± 0.25 ± --- | mm INCH | DRAWN BY KS IMONSO | DATE 2004/07/08 | TITLE 1X6 SFP LIGHT PIPE ASSEMBLY, BACK-TOP | | | |
| | | ANGULAR ± 1 ° | | CHECKED BY BRUSSELL | DATE 2004/07/08 | APPROVED BY BRUSSELL | | | DATE 2004/07/08 |
| | | DRAFT WHERE APPLICABLE MUST REMAIN WITHIN DIMENSIONS | | MATERIAL NO. 747480001 | DOCUMENT NO. SD-74748-001 | MOLEX INCORPORATED | | | SHEET NO. 5 OF 5 |

19 18 17 16 15 14 13 12 11 10 9 8 7 6 5 4 3 2 1