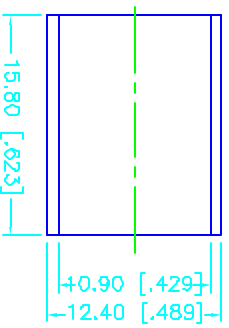
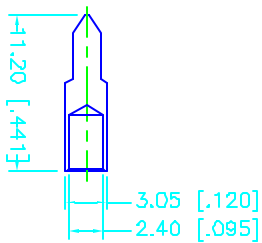
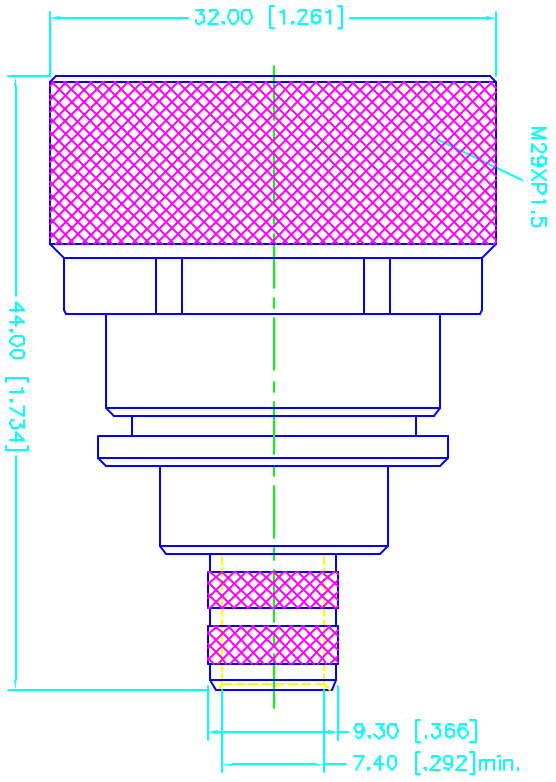
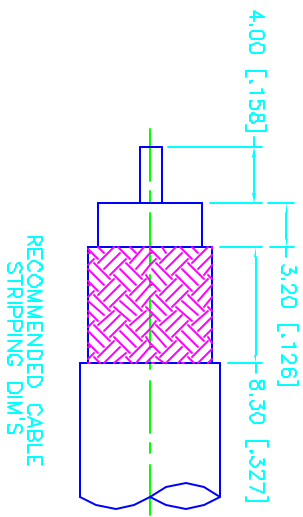


REV.	DATE	DESCRIPTION
A	12/29/00	UPDATE PLATING TO SILVER



NOTES: FINISH (PLATING THICKNESS IN MICRO-INCHES)

1. BRASS PER QQ-B-626
2. SILVER PL 120 MIN. THICK OVER COPPER STRIKE
3. BERYLLIUM COPPER PER QQ-C-530.
4. SILVER PL 200 MIN. THICK OVER COPPER STRIKE
5. TEFLON MIL-P-19468

DESCRIPTION	MATERIAL	FINISH	UNLESS OTHERWISE SPECIFIED DIMENSIONS IN [] ARE IN MILLIMETERS DIMENSIONS IN [] ARE IN INCHES FOR CUSTOMER REFERENCE ONLY	APPROVALS	DATE	TITLE	SCALE	PART NO.	SHEET	REV.	
1 HOUSING	BRASS	SILVER	UNLESS OTHERWISE SPECIFIED TOLERANCES FOR MILLIMETERS ARE: 0.5-6 = ± 0.2 6-30 = ± 0.4 30-120 = ± 0.6 120-315 = ± 1 315-1000 = ± 1.6 1000-2000 = ± 2.4	DRAWN	G.R.S.	12/29/00	Comnex Connector Corporation 7/16 CRIMP PLUG (FOR RG 8/U, 213/U, 393/U CABLE)	NA	272105	1 OF 1	
2 BODY	BRASS	SILVER		CHECKED				SIZE	FORM NO.	DWG. NO.	REV.
3 INSULATOR	TEFLON	NATURAL		ISSUED				A	99001	272105.DWG	A
4 CONTACT PIN	BER. COPPER	SILVER									
5 FERRULE	COPPER	SILVER									
6 COVER	PE	BLUE									
7											
8											

DO NOT SCALE DRAWING