

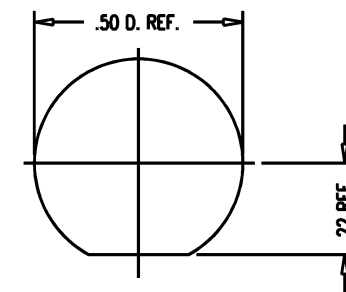
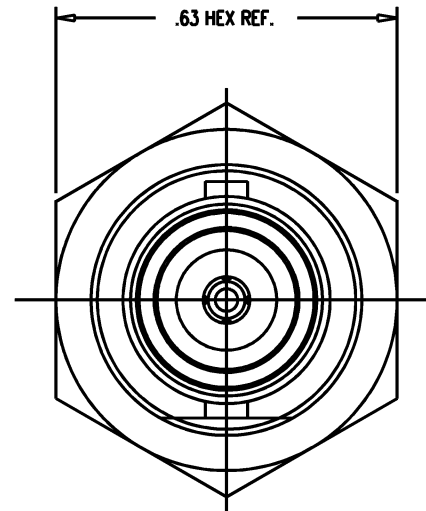
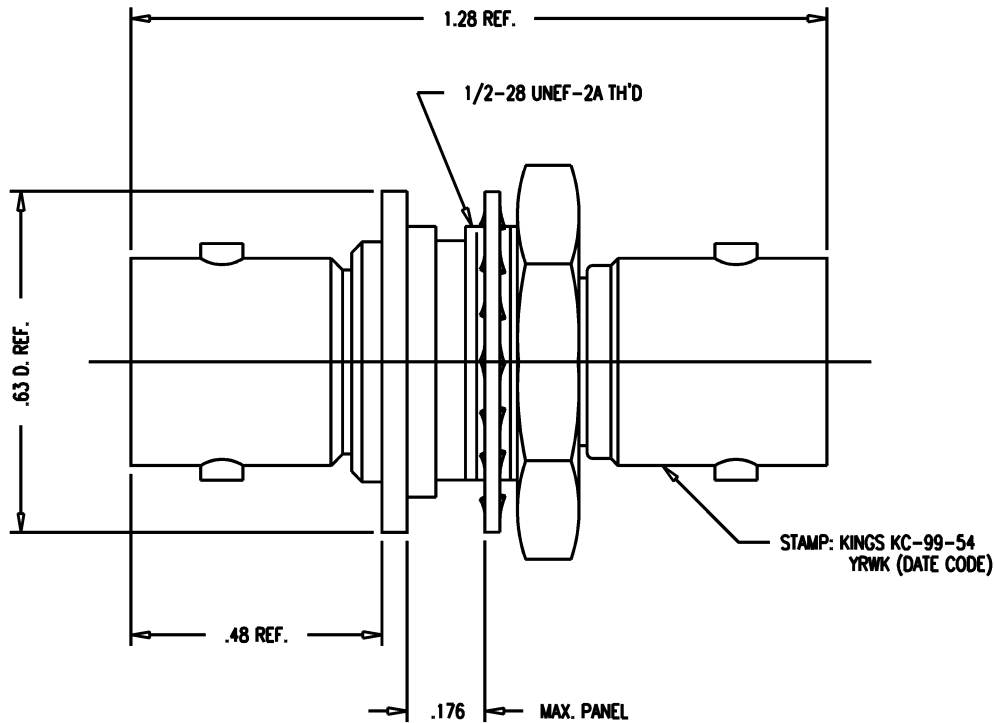
DASH NO.	M CODE	MADE FROM
----------	--------	-----------

GSD

KC-99-54

REVISIONS

ISSUE	CHANGES
9	CN 36716 C REDRAWN KH 12/06/95
10	CN 37888 B GEH 09/02/99
11	CN 38558 E TML 05/21/02



MOUNTING HOLE

NOTES:

- INTERFACES PER MIL-STD-348, FIG. 301-2.
- MATERIALS:
INSULATORS-TEFLON, ASTM-D-4894
CENTER CONTACT-BER. COP., ASTM-B-196
ALL OTHER METAL PARTS-BRASS, ASTM-B16
- FINISHES:
CENTER CONTACT: SILVER PLATE PER QQ-S-365
ALL OTHER METAL PARTS-KINGS TARNISH RESISTANT NICKEL FINISH (TR-5)
- ELECTRICAL CHARACTERISTICS:
NOMINAL IMPEDANCE-50 OHMS
WORKING VOLTAGE-500 VRMS
FREQUENCY RANGE-DC TO 4 GHz

UNLESS OTHERWISE SPECIFIED

- TOLERANCES: FRACTIONS & 2 PLACE DECIMALS ? .010
3 PLACE DECIMALS ? .004 ANGLES ? 1-
CONCENTRICITY OF ANY 2 DIAMETERS MAY NOT
EXCEED HALF THE SUM OF THEIR TOLERANCES.

- REMOVE ALL BURRS, BREAK SHARP EDGES .005 MAX.
- NO FILLETS PERMITTED.
- SURFACE ROUGHNESS 63 MICRONS RMS MAX.
- ALL DIMENSIONS PRIOR TO PLATING.
- ALL PLATING IN ACCORDANCE WITH KER 10004.

- ALL LEAD THREADS TO BE
CHAMFERED 45- TO ROOT DIAMETER.
*CRITICAL DIMENSIONS

GSD

SCALE 4:1

APPROX SURFACE AREA

USED ON

REF:

ADAPTER, F-F, BULKHEAD
ISOLATED GROUND, BNC-BNC

DRAWN	VLS	DATE/16/95
DESIGN	VLS	DATE/16/95
APPR.	VLS	DATE/16/95

KINGS
ELECTRONICS CO., INC.
ROCK HILL, SOUTH CAROLINA 29730

KC-99-54