


APPLICABLE STANDARD					
RATING	OPERATING TEMPERATURE RANGE	-40 °C TO +125 °C	STORAGE TEMPERATURE RANGE	-10 °C TO +60 °C	
	VOLTAGE	_____	_____	_____	
	CURRENT	_____	APPLICABLE CABLE	φ23±0.5	
SPECIFICATIONS					
ITEM	TEST METHOD		REQUIREMENTS	QT	AT
CONSTRUCTION					
GENERAL EXAMINATION	VISUALLY AND BY MEASURING INSTRUMENT.		ACCORDING TO DRAWING.	X	X
MARKING	CONFIRMED VISUALLY.			X	X
ENVIRONMENTAL CHARACTERISTICS					
RAPID CHANGE OF TEMPERATURE	TEMPERATURE -55→R/T ⁽¹⁾ → +125 → R/T °C TIME 30 → 2 TO 3 → 30 → 2 TO 3 min UNDER 5 CYCLES.		NO DAMAGE, CRACK AND LOOSENESS OF PARTS.	X	-
DAMP HEAT (STEADY STATE)	EXPOSED AT 40 °C, 90 TO 95 %, 96 h.		NO DAMAGE, CRACK AND LOOSENESS OF PARTS.	X	-
CORROSION SALT MIST	EXPOSED IN 5 % SALT WATER SPRAY FOR 48 h.		NO HEAVY CORROSION RUIN THE FUNCTION.	X	-
SEALING ⁽²⁾	EXPOSED AT A DEPTH OF 1.8 m FOR 48 h.		NO WATER PENETRATION INSIDE CONNECTOR.	X	-
AIRTIGHTNESS ⁽²⁾	APPLY AIR PRESSURE 17.6 kPa FOR 0.5min TO INSIDE CONNECTOR.		NO AIR BUBBLES INSIDE CONNECTOR.	X	-
	COUNT	DESCRIPTION OF REVISIONS	DESIGNED	CHECKED	DATE
△					
REMARK			APPROVED	SU. OBARA	09.10.20
NOTES (1)R/T:ROOM TEMPERATURE			CHECKED	HY. KOBAYASHI	09.10.19
(2)SEALING AND AIRTIGHTNESS SHALL BE TESTED BY APPLICABLE CONNECTOR AND CABLE.			DESIGNED	HS. NAGANO	09.10.19
Unless otherwise specified, refer to JIS C 5402.			DRAWN	HS. NAGANO	09.10.19
Note QT:Qualification Test AT:Assurance Test X:Applicable Test			DRAWING NO.		ELC4-115589-00
HRS	SPECIFICATION SHEET		PART NO.	EM35WCC-23	
	HIROSE ELECTRIC CO., LTD.		CODE NO.	CL138-0007-0-00	△ 1/1

APPLICABLE STANDARD					
RATING	OPERATING TEMPERATURE RANGE	-40°C TO +125°C	STORAGE TEMPERATURE RANGE	-10°C TO +60°C	
	VOLTAGE	AC 250 V, DC 250 V	—	—	
	CURRENT	—	APPLICABLE CABLE	—	
SPECIFICATIONS					
ITEM	TEST METHOD		REQUIREMENTS	QT	AT
CONSTRUCTION					
GENERAL EXAMINATION	VISUALLY AND BY MEASURING INSTRUMENT.		ACCORDING TO DRAWING.	X	X
MARKING	CONFIRMED VISUALLY.			X	X
ELECTRIC CHARACTERISTICS					
CONTACT RESISTANCE	CONTACT SHALL BE MEASURED AT —		— mΩ MAX.	—	—
INSULATION RESISTANCE	500 V DC.		5000 MΩ MIN.	X	X
VOLTAGE PROOF	2210 V AC. FOR 1 min.		NO FLASHOVER OR BREAKDOWN.	X	X
MECHANICAL CHARACTERISTICS					
CONTACT INSERTION AND WITHDRAWAL FORCES	— BY STEEL GAUGE.		INSERTION AND WITHDRAWAL FORCES : — N MIN.	—	—
CONNECTOR INSERTION AND WITHDRAWAL FORCES	MEASURED BY APPLICABLE CONNECTOR.		INSERTION AND WITHDRAWAL FORCES : 100 N MAX.	X	—
CONTACT RETENTION FORCE	PULL A TERMINAL BY 50N FROM TERMINAL AREA.		DO NOT MOVE THE TERMINAL.	X	—
MECHANICAL OPERATION	500 TIMES INSERTIONS AND EXTRACTIONS.		CONTACT RESISTANCE: — mΩ MAX.	—	—
VIBRATION	FREQUENCY: 10 → 55 → 10 (Hz) (1CYC, 5min), SINGLE AMPLITUDE 0.75 mm, AT 10 CYC, FOR 3 DIRECTIONS.		① NO ELECTRICAL DISCONTINUITY OF 10 μs. ② NO DAMAGE, CRACK AND LOOSENESS, OF PARTS.	X	—
SHOCK	IN OPPOSITE DIRECTIONS OF EACH 3 DEMENSION AXIS FOR 3 TIMES AT 490 m/s ² DURATIONS OF PULSE 11 ms.		① NO ELECTRICAL DISCONTINUITY OF 10 μs. ② NO DAMAGE, CRACK AND LOOSENESS, OF PARTS.	X	—
ENVIRONMENTAL CHARACTERISTICS					
RAPID CHANGE OF TEMPERATURE	TEMPERATURE -55 → R/T ⁽¹⁾ → +125 → R/T °C TIME 30 → 2 TO 3 → 30 → 2 TO 3 min UNDER 5 CYCLES.		① INSULATION RESISTANCE: 5000 MΩ MIN. ② NO DAMAGE, CRACK AND LOOSENESS OF PARTS.	X	—
DAMP HEAT (STEADY STATE)	EXPOSED AT 40 °C, 90 TO 95 %, 96 h.		① INSULATION RESISTANCE: 50 MΩ MIN (AT HIGH HUMIDITY). ② INSULATION RESISTANCE: 500 MΩ MIN (AT DRY). ③ NO DAMAGE, CRACK AND LOOSENESS OF PARTS.	X	—
CORROSION SALT MIST	EXPOSED IN 5 % SALT WATER SPRAY FOR 48 h.		NO HEAVY CORROSION RUIN THE FUNCTION.	X	—
SEALING	EXPOSED AT A DEPTH OF 1.8 m FOR 48 h.		NO WATER PENETRATION INSIDE CONNECTOR.	X	—
AIR TIGHTNESS	APPLY AIR PRESSURE 17.6kPa FOR 0.5min TO INSIDE CONNECTOR.		NO AIR BUBBLES INSIDE CONNECTOR.	X	—
	COUNT	DESCRIPTION OF REVISIONS	DESIGNED	CHECKED	DATE
	0				
REMARK			APPROVED	SU. OBARA	09. 10. 05
NOTE (1) R/T : ROOM TEMPERATURE			CHECKED	HY. KOBAYASHI	09. 10. 05
(2) ABOVE SPECIFICATIONS SHOWS THE VALUES IN ASSEMBLED CONDITION WITH APPLICABLE CRIMP CONTACTS.			DESIGNED	HS. NAGANO	09. 10. 02
Unless otherwise specified, refer to JIS C 5402.			DRAWN	HS. NAGANO	09. 10. 02
Note QT:Qualification Test AT:Assurance Test X:Applicable Test			DRAWING NO.		ELG4-115596-00
HRS	SPECIFICATION SHEET		PART NO.	EM35WBP-4SC	
	HIROSE ELECTRIC CO., LTD.		CODE NO.	CL138-0008-3-00	 1/1

APPLICABLE STANDARD					
RATING	OPERATING TEMPERATURE RANGE	-40°C TO +125°C	STORAGE TEMPERATURE RANGE	-10°C TO +60°C	
	VOLTAGE	AC 250 V, DC 250 V	—	—	
	CURRENT	—	APPLICABLE CABLE	—	
SPECIFICATIONS					
ITEM	TEST METHOD		REQUIREMENTS	QT	AT
CONSTRUCTION					
GENERAL EXAMINATION	VISUALLY AND BY MEASURING INSTRUMENT.		ACCORDING TO DRAWING.	X	X
MARKING	CONFIRMED VISUALLY.			X	X
ELECTRIC CHARACTERISTICS					
CONTACT RESISTANCE	CONTACT SHALL BE MEASURED AT —		— mΩ MAX.	—	—
	BETWEEN GROUND CONTACT TO SHELL SHALL BE MEASURED AT DC 1A.		100 mΩ MAX.	X	X
INSULATION RESISTANCE	500 V DC.		5000 MΩ MIN.	X	X
VOLTAGE PROOF	2210 V AC. FOR 1 min.		NO FLASHOVER OR BREAKDOWN.	X	X
MECHANICAL CHARACTERISTICS					
CONTACT INSERTION AND WITHDRAWAL FORCES	— BY STEEL GAUGE.		INSERTION AND WITHDRAWAL FORCES : — N MIN.	—	—
CONNECTOR INSERTION AND WITHDRAWAL FORCES	MEASURED BY APPLICABLE CONNECTOR.		INSERTION AND WITHDRAWAL FORCES : 100 N MAX.	X	—
CONTACT RETENTION FORCE	PULL A TERMINAL BY 50N FROM TERMINAL AREA.		DO NOT MOVE THE TERMINAL.	X	—
MECHANICAL OPERATION	500 TIMES INSERTIONS AND EXTRACTIONS.		CONTACT RESISTANCE: — mΩ MAX.	—	—
			GROUND CONTACT TO SHELL RESISTANCE: 100 mΩ MAX.	X	—
VIBRATION	FREQUENCY: 10 → 55 → 10 (Hz) (1CYC, 5min), SINGLE AMPLITUDE 0.75 mm, AT 10 CYC, FOR 3 DIRECTIONS.		① NO ELECTRICAL DISCONTINUITY OF 10 μs. ② NO DAMAGE, CRACK AND LOOSENESS, OF PARTS.	X	—
SHOCK	IN OPPOSITE DIRECTIONS OF EACH 3 DEMENSION AXIS FOR 3 TIMES AT 490 m/s ² DURATIONS OF PULSE 11 ms.		① NO ELECTRICAL DISCONTINUITY OF 10 μs. ② NO DAMAGE, CRACK AND LOOSENESS, OF PARTS.	X	—
ENVIRONMENTAL CHARACTERISTICS					
RAPID CHANGE OF TEMPERATURE	TEMPERATURE -55 → R/T ⁽¹⁾ → +125 → R/T °C TIME 30 → 2 TO 3 → 30 → 2 TO 3 min UNDER 5 CYCLES.		① INSULATION RESISTANCE: 5000 MΩ MIN. . ② NO DAMAGE. CRACK AND LOOSENESS OF PARTS.	X	—
DAMP HEAT (STEADY STATE)	EXPOSED AT 40 °C, 90 TO 95 %, 96 h.		① INSULATION RESISTANCE: 50 MΩ MIN (AT HIGH HUMIDITY). ② INSULATION RESISTANCE: 500 MΩ MIN (AT DRY). ③ NO DAMAGE. CRACK AND LOOSENESS OF PARTS.	X	—
CORROSION SALT MIST	EXPOSED IN 5 % SALT WATER SPRAY FOR 48 h.		NO HEAVY CORROSION RUIN THE FUNCTION.	X	—
SEALING	EXPOSED AT A DEPTH OF 1.8 m FOR 48 h.		NO WATER PENETRATION INSIDE CONNECTOR.	X	—
AIR TIGHTNESS	APPLY AIR PRESSURE 17.6kPa FOR 0.5min TO INSIDE CONNECTOR.		NO AIR BUBBLES INSIDE CONNECTOR.	X	—
	COUNT	DESCRIPTION OF REVISIONS	DESIGNED	CHECKED	DATE
①					
REMARK				APPROVED	SU. OBARA 09.10.20
NOTES(1) R/T : ROOM TEMPERATURE				CHECKED	HY. KOBAYASHI 09.10.19
(2) ABOVE SPECIFICATIONS SHOWS THE VALUES IN ASSEMBLED CONDITION WITH APPLICABLE CRIMP CONTACTS.				DESIGNED	HS. NAGANO 09.10.19
				DRAWN	HS. NAGANO 09.10.19
Unless otherwise specified, refer to JIS C 5402.					
Note QT:Qualification Test AT:Assurance Test X:Applicable Test			DRAWING NO.	ELC4-115597-00	
HRS	SPECIFICATION SHEET		PART NO.	EM35WBR-4PC	
	HIROSE ELECTRIC CO., LTD.		CODE NO.	CL138-0009-6-00	△ 1/1

参考図：ご確認用。正式には別途納入仕様書をご請求願います。

2010/03/25 20:23:04 SROper

FORM HD0011-2-1

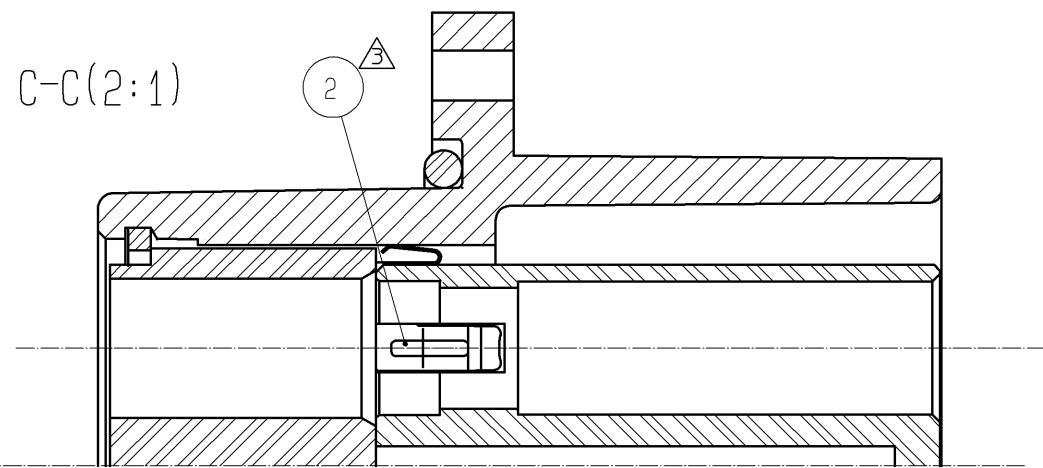
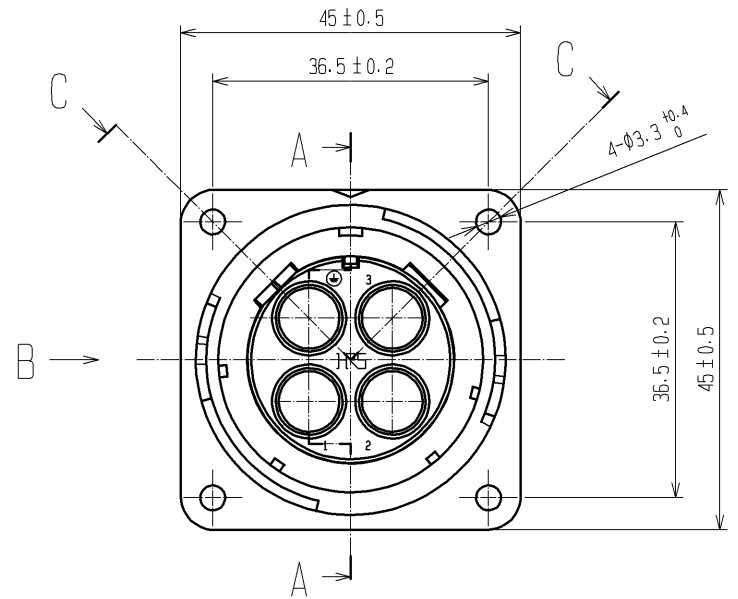
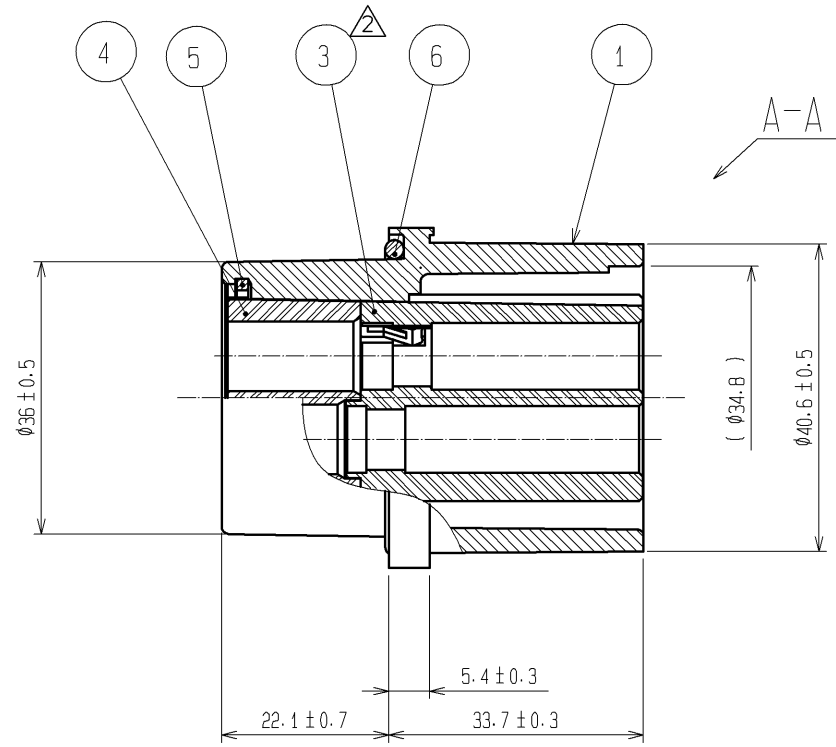
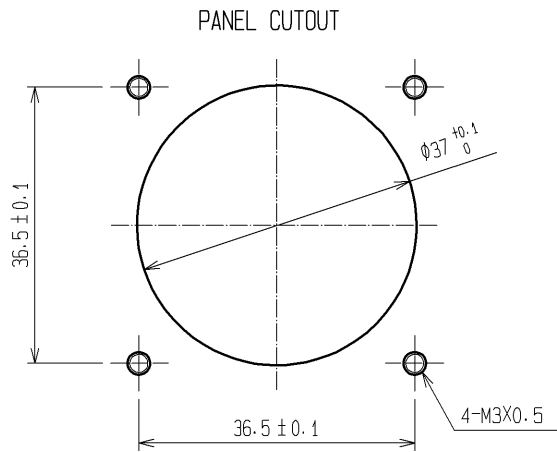
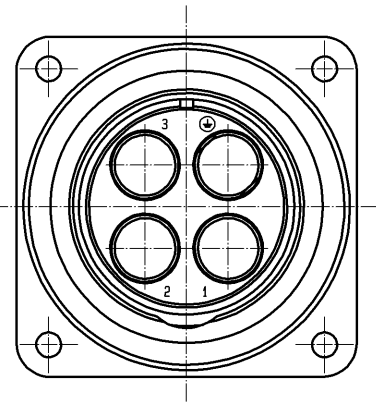
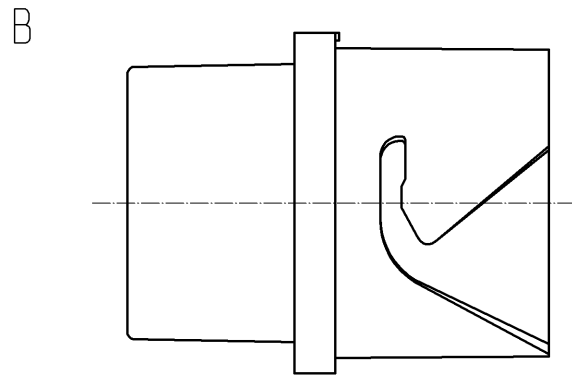
APPLICABLE STANDARD					
RATING	OPERATING TEMPERATURE RANGE	-40°C TO +125°C	STORAGE TEMPERATURE RANGE	-10°C TO +60°C	
	VOLTAGE	AC 250 V, DC 250 V	—	—	
	CURRENT	—	APPLICABLE CABLE	—	
SPECIFICATIONS					
ITEM	TEST METHOD		REQUIREMENTS	QT	AT
CONSTRUCTION					
GENERAL EXAMINATION	VISUALLY AND BY MEASURING INSTRUMENT.		ACCORDING TO DRAWING.	X	X
MARKING	CONFIRMED VISUALLY.			X	X
ELECTRIC CHARACTERISTICS					
CONTACT RESISTANCE	CONTACT SHALL BE MEASURED AT —		— mΩ MAX.	—	—
INSULATION RESISTANCE	500 V DC.		5000 MΩ MIN.	X	X
VOLTAGE PROOF	2210 V AC. FOR 1 min.		NO FLASHOVER OR BREAKDOWN.	X	X
MECHANICAL CHARACTERISTICS					
CONTACT INSERTION AND WITHDRAWAL FORCES	— BY STEEL GAUGE.		INSERTION AND WITHDRAWAL FORCES : — N MIN.	—	—
CONNECTOR INSERTION AND WITHDRAWAL FORCES	MEASURED BY APPLICABLE CONNECTOR.		INSERTION AND WITHDRAWAL FORCES : 100 N MAX.	X	—
CONTACT RETENTION FORCE	PULL A TERMINAL BY 50N FROM TERMINAL AREA.		DO NOT MOVE THE TERMINAL.	X	—
MECHANICAL OPERATION	500 TIMES INSERTIONS AND EXTRACTIONS.		CONTACT RESISTANCE: — mΩ MAX.	—	—
VIBRATION	FREQUENCY: 10 → 55 → 10 (Hz) (1CYC, 5min), SINGLE AMPLITUDE 0.75 mm, AT 10 CYC, FOR 3 DIRECTIONS.		① NO ELECTRICAL DISCONTINUITY OF 10 μs. ② NO DAMAGE, CRACK AND LOOSENESS, OF PARTS.	X	—
SHOCK	IN OPPOSITE DIRECTIONS OF EACH 3 DEMENSION AXIS FOR 3 TIMES AT 490 m/s ² DURATIONS OF PULSE 11 ms.		① NO ELECTRICAL DISCONTINUITY OF 10 μs. ② NO DAMAGE, CRACK AND LOOSENESS, OF PARTS.	X	—
ENVIRONMENTAL CHARACTERISTICS					
RAPID CHANGE OF TEMPERATURE	TEMPERATURE -55 → R/T ⁽¹⁾ → +125 → R/T °C TIME 30 → 2 TO 3 → 30 → 2 TO 3 min UNDER 5 CYCLES.		① INSULATION RESISTANCE: 5000 MΩ MIN. . ② NO DAMAGE. CRACK AND LOOSENESS OF PARTS.	X	—
DAMP HEAT (STEADY STATE)	EXPOSED AT 40 °C, 90 TO 95 %, 96 h.		① INSULATION RESISTANCE: 50 MΩ MIN (AT HIGH HUMIDITY). ② INSULATION RESISTANCE: 500 MΩ MIN (AT DRY). ③ NO DAMAGE. CRACK AND LOOSENESS OF PARTS.	X	—
CORROSION SALT MIST	EXPOSED IN 5 % SALT WATER SPRAY FOR 48 h.		NO HEAVY CORROSION RUIN THE FUNCTION.	X	—
SEALING	EXPOSED AT A DEPTH OF 1.8 m FOR 48 h.		NO WATER PENETRATION INSIDE CONNECTOR.	X	—
AIR TIGHTNESS	APPLY AIR PRESSURE 17.6kPa FOR 0.5min TO INSIDE CONNECTOR.		NO AIR BUBBLES INSIDE CONNECTOR.	X	—
	COUNT	DESCRIPTION OF REVISIONS	DESIGNED	CHECKED	DATE
①					
REMARK			APPROVED	SU. OBARA	09.10.05
NOTE (1) R/T : ROOM TEMPERATURE			CHECKED	HY. KOBAYASHI	09.10.05
(2) ABOVE SPECIFICATIONS SHOWS THE VALUES IN ASSEMBLED CONDITION WITH APPLICABLE CRIMP CONTACTS.			DESIGNED	HS. NAGANO	09.10.02
Unless otherwise specified, refer to JIS C 5402.			DRAWN	HS. NAGANO	09.10.02
Note QT:Qualification Test AT:Assurance Test X:Applicable Test			DRAWING NO.	ELC4-115774-00	
HRS	SPECIFICATION SHEET		PART NO.	EM35WBP-4PC	
	HIROSE ELECTRIC CO., LTD.		CODE NO.	CL138-0013-3-00	△ 1/1

APPLICABLE STANDARD					
RATING	OPERATING TEMPERATURE RANGE	-40°C TO +125°C	STORAGE TEMPERATURE RANGE	-10°C TO +60°C	
	VOLTAGE	AC 250 V, DC 250 V	—	—	
	CURRENT	—	APPLICABLE CABLE	—	
SPECIFICATIONS					
ITEM	TEST METHOD		REQUIREMENTS	QT	AT
CONSTRUCTION					
GENERAL EXAMINATION	VISUALLY AND BY MEASURING INSTRUMENT.		ACCORDING TO DRAWING.	X	X
MARKING	CONFIRMED VISUALLY.			X	X
ELECTRIC CHARACTERISTICS					
CONTACT RESISTANCE	CONTACT SHALL BE MEASURED AT —		— mΩ MAX.	—	—
	BETWEEN GROUND CONTACT TO SHELL SHALL BE MEASURED AT DC 1A.		100 mΩ MAX.	X	X
INSULATION RESISTANCE	500 V DC.		5000 MΩ MIN.	X	X
VOLTAGE PROOF	2210 V AC. FOR 1 min.		NO FLASHOVER OR BREAKDOWN.	X	X
MECHANICAL CHARACTERISTICS					
CONTACT INSERTION AND WITHDRAWAL FORCES	— BY STEEL GAUGE.		INSERTION AND WITHDRAWAL FORCES : — N MIN.	—	—
CONNECTOR INSERTION AND WITHDRAWAL FORCES	MEASURED BY APPLICABLE CONNECTOR.		INSERTION AND WITHDRAWAL FORCES : 100 N MAX.	X	—
CONTACT RETENTION FORCE	PULL A TERMINAL BY 50N FROM TERMINAL AREA.		DO NOT MOVE THE TERMINAL.	X	—
MECHANICAL OPERATION	500 TIMES INSERTIONS AND EXTRACTIONS.		CONTACT RESISTANCE: — mΩ MAX.	—	—
			GROUND CONTACT TO SHELL RESISTANCE: 100 mΩ MAX.	X	—
VIBRATION	FREQUENCY: 10 → 55 → 10 (Hz) (1CYC, 5min), SINGLE AMPLITUDE 0.75 mm, AT 10 CYC, FOR 3 DIRECTIONS.		① NO ELECTRICAL DISCONTINUITY OF 10 μs. ② NO DAMAGE, CRACK AND LOOSENESS, OF PARTS.	X	—
SHOCK	IN OPPOSITE DIRECTIONS OF EACH 3 DEMENSION AXIS FOR 3 TIMES AT 490 m/s ² DURATIONS OF PULSE 11 ms.		① NO ELECTRICAL DISCONTINUITY OF 10 μs. ② NO DAMAGE, CRACK AND LOOSENESS, OF PARTS.	X	—
ENVIRONMENTAL CHARACTERISTICS					
RAPID CHANGE OF TEMPERATURE	TEMPERATURE -55 → R/T ⁽¹⁾ → +125 → R/T °C TIME 30 → 2 TO 3 → 30 → 2 TO 3 min UNDER 5 CYCLES.		① INSULATION RESISTANCE: 5000 MΩ MIN. . ② NO DAMAGE. CRACK AND LOOSENESS OF PARTS.	X	—
DAMP HEAT (STEADY STATE)	EXPOSED AT 40 °C, 90 TO 95 %, 96 h.		① INSULATION RESISTANCE: 50 MΩ MIN (AT HIGH HUMIDITY). ② INSULATION RESISTANCE: 500 MΩ MIN (AT DRY). ③ NO DAMAGE. CRACK AND LOOSENESS OF PARTS.	X	—
CORROSION SALT MIST	EXPOSED IN 5 % SALT WATER SPRAY FOR 48 h.		NO HEAVY CORROSION RUIN THE FUNCTION.	X	—
SEALING	EXPOSED AT A DEPTH OF 1.8 m FOR 48 h.		NO WATER PENETRATION INSIDE CONNECTOR.	X	—
AIR TIGHTNESS	APPLY AIR PRESSURE 17.6kPa FOR 0.5min TO INSIDE CONNECTOR.		NO AIR BUBBLES INSIDE CONNECTOR.	X	—
	COUNT	DESCRIPTION OF REVISIONS	DESIGNED	CHECKED	DATE
①					
REMARK			APPROVED	SU. OBARA	09.10.20
NOTES(1) R/T : ROOM TEMPERATURE			CHECKED	HY. KOBAYASHI	09.10.19
(2) ABOVE SPECIFICATIONS SHOWS THE VALUES IN ASSEMBLED CONDITION WITH APPLICABLE CRIMP CONTACTS.			DESIGNED	HS. NAGANO	09.10.19
Unless otherwise specified, refer to JIS C 5402.			DRAWN	HS. NAGANO	09.10.19
Note QT:Qualification Test AT:Assurance Test X:Applicable Test			DRAWING NO.		ELC4-115775-00
HRS	SPECIFICATION SHEET		PART NO.	EM35WBR-4SC	
	HIROSE ELECTRIC CO., LTD.		CODE NO.	CL138-0014-6-00	△ 1/1

参考図：ご確認用。正式には別途納入仕様書をご請求願います。

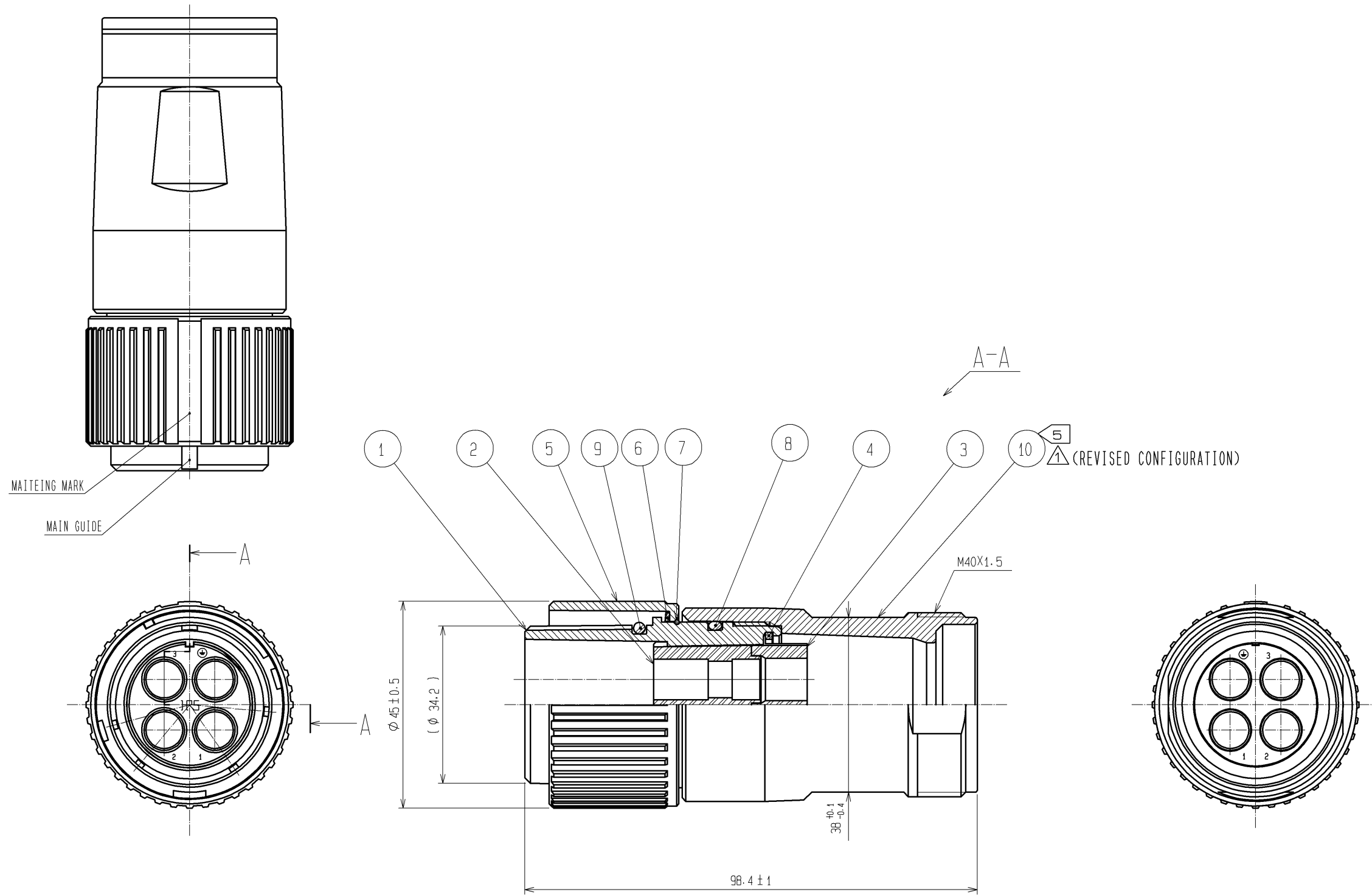
2010/03/25 20:23:05 SROper

FORM HD0011-2-1



- NOTES: 1 APPLICABLE CRIMPING CONTACT: EM-SC-133 (CL138-0018-7)
 2 APPLICABLE CRIMP CONTACT EXTRACTION TOOL: EM-8-TP (CL150-0249-3)
 3 THE ASSEMBLY OF THIS PRODUCT APPLIES TO THE MANUAL ATAD-C0155.
 4 CHECK REF. NO. ⑥ IS PROPERLY SET AT THE GROOVE OF REF. NO. ①.
 WHILE MOUNTING THE CONNECTOR, MAKE SURE THAT REF. NO. ⑥ IS NOT CAUGHT.

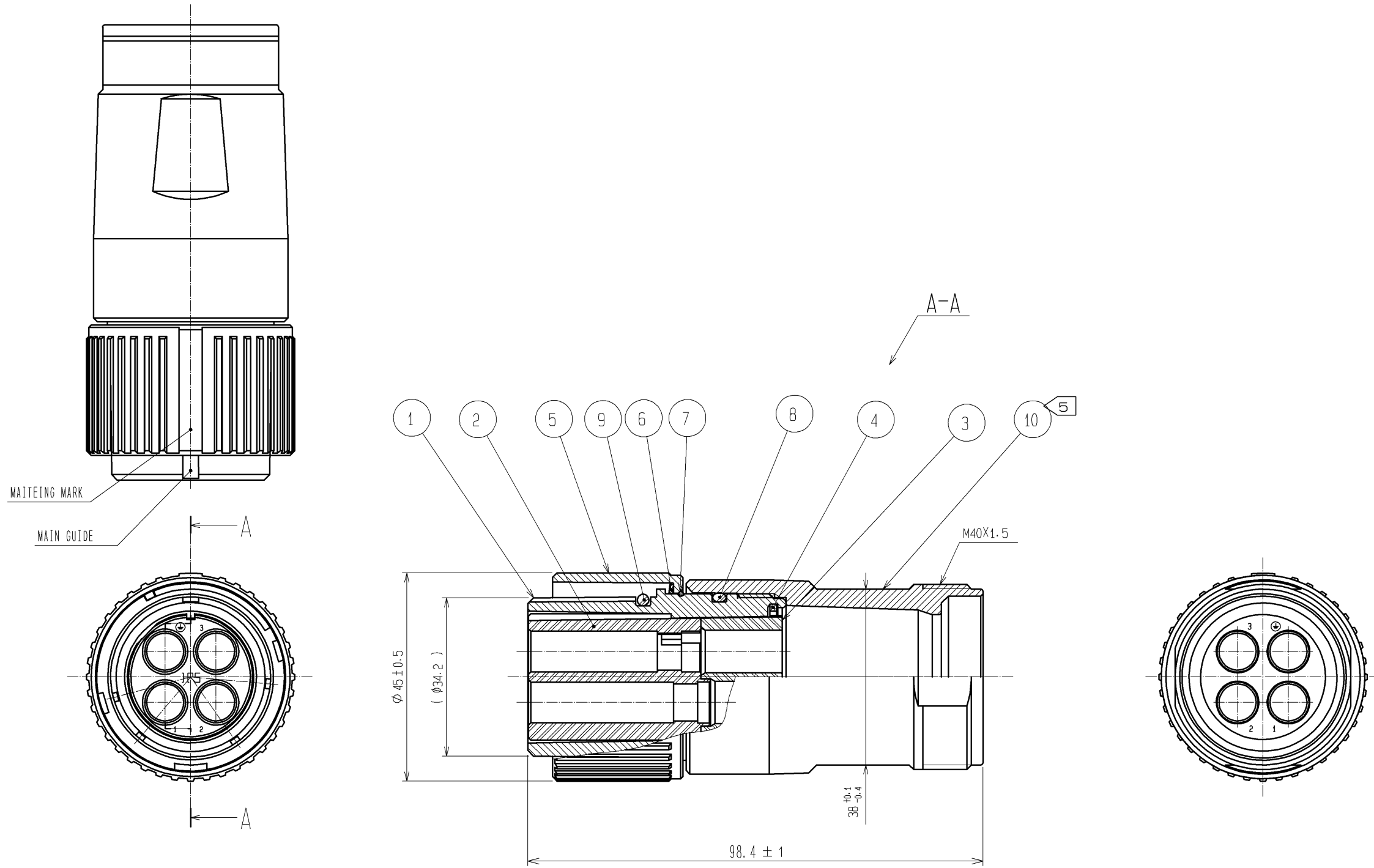
3	PBT	(BLACK) UL94V-0	6	SILICONE RUBBER	(RED)
2	COPPER ALLOY	TIN PLATING	5	STAINLESS STEEL	
1	ALUMINUM ALLOY	NICKEL PLATING	4	PBT	(BLACK) UL94V-0
NO.	MATERIAL	FINISH, REMARKS	NO.	MATERIAL	FINISH, REMARKS
UNITS	mm	SCALE	1:1	COUNT	1
DESCRIPTION OF REVISIONS			DESIGNED	CHECKED	DATE
DIS-C-001430			HS. NAGANO	HY. KOBAYASHI	09.10.05
APPROVED: MO. SATOH 07.11.16			DRAWING NO. EDC3-115775-00		
CHECKED: EJ. KUNII 07.11.16			PART NO. EM35WBR-4SC		
DESIGNED: HS. NAGANO 07.11.15			CODE NO. CL138-0014-6-00		
DRAWN: HS. NAGANO 07.11.15			④ 1/1		



- NOTES
- ① APPLICABLE CRIMPING CONTACT: EM-PC-133 (CL138-0019-0)
 - ② APPLICABLE CRIMP CONTACT EXTRACTION TOOL: EM-8-TP (CL150-0249-3)
 - ③ APPLICABLE CABLE CLAMP: EM35WCC-※
※SHOWS THE APPLICABLE CABLE DIAMETER.
 - ④ THE ASSEMBLY OF THIS PRODUCT APPLIES TO THE MANUAL ATAD-C0155.
 - ⑤ THE RECOMMENDED TIGHTENING TORQUE, ADHESIVE FOR SCREW PORTION OF REF. NO. ⑩ AS FOLLOWS.
THE ADHESIVE SHOULD BE ATTACHED ON THE SCREW PORTION OF REF. NO. ⑩
TIGHTENING TORQUE: 6 TO 7 N·m.
ADHESIVE: LOCTITE 242 MADE BY HENKEL JAPAN LTD.
 - ⑥ ROTATION EXAMPLES ARE SHOWN FOR REF. NO. ①, ②, AND ③.

NO.	MATERIAL	FINISH, REMARKS	NO.	MATERIAL	FINISH, REMARKS
5	ALUMINUM ALLOY	NICKEL PLATING	10	ALUMINUM ALLOY	NICKEL PLATING
4	STAINLESS STEEL		9	SILICONE RUBBER	(RED)
3	PBT	(BLACK) UL94V-0	8	SILICONE RUBBER	(RED)
2	PBT	(BLACK) UL94V-0	7	STAINLESS STEEL	
1	ALUMINUM ALLOY	NICKEL PLATING	6	STAINLESS STEEL	

UNITS	SCALE	COUNT	DESCRIPTION OF REVISIONS	DESIGNED	CHECKED	DATE
mm	1:1	1	DIS-C-001430	HS. NAGANO	HY. KOBAYASHI	09.10.05
APPROVED: MO. SATOH 07.11.16			DRAWING NO. EDC3-115774-00			
CHECKED: EJ. KUNII 07.11.16			PART NO. EM35WBP-4PC			
DESIGNED: HS. NAGANO 07.11.15			CODE NO. CL138-0013-3-00			
DRAWN: HS. NAGANO 07.11.15						

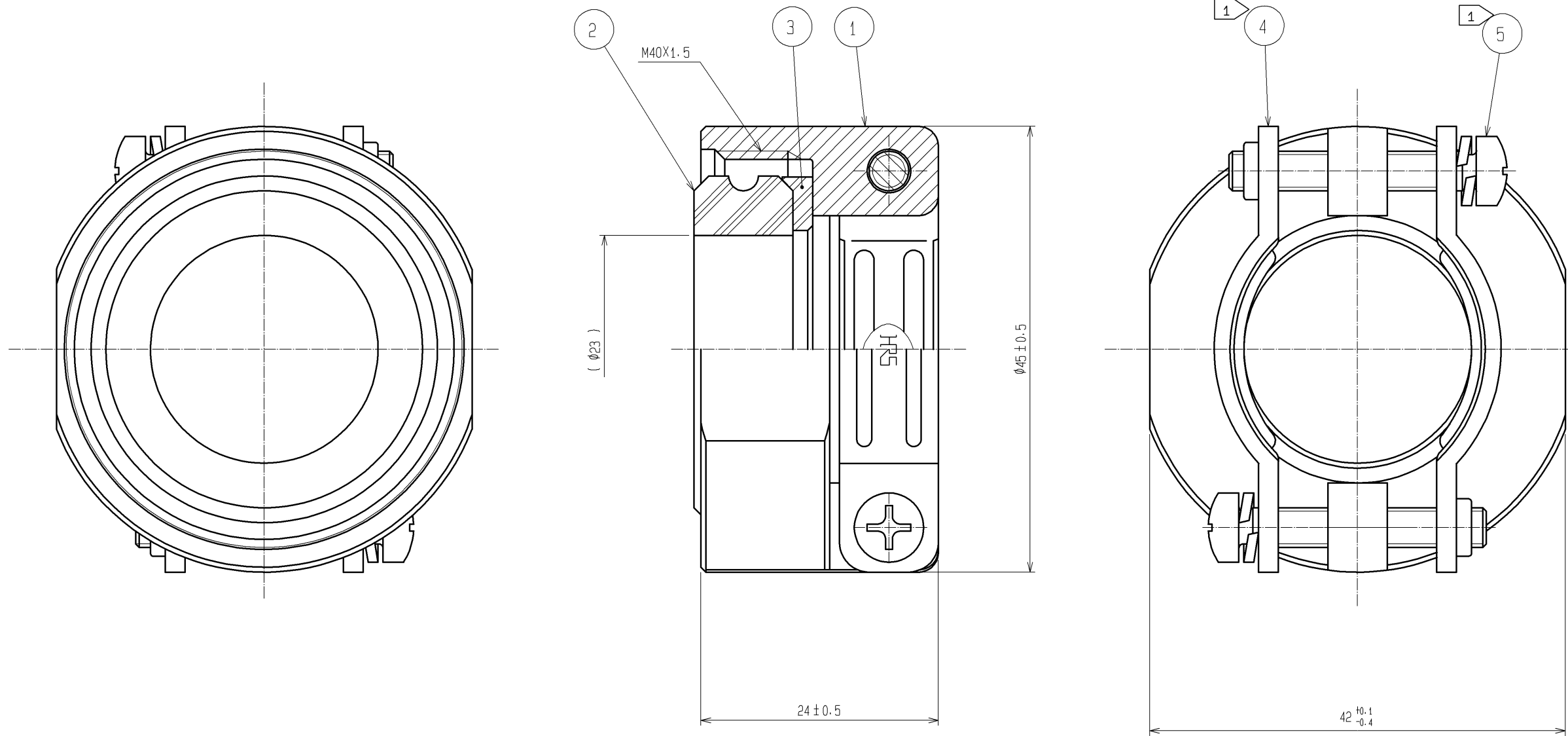


- △ NOTES
- 1 APPLICABLE CRIMPING CONTACT:EM-SC-133(CL138-0018-7)
 - 2 APPLICABLE CRIMP CONTACT EXTRACTION TOOL:EM-8-TP(CL150-0249-3)
 - 3 APPLICABLE CABLE CLAMP:EM35WCC-※
※SHOWS THE APPLICABLE CABLE DIAMETER.
 - 4 THE ASSEMBLY OF THIS PRODUCT APPLIES TO THE MANUAL ATAD-C0155.
 - 5 THE RECOMMENDED TIGHTENING TORQUE, ADHESIVE FOR SCREW PORTION OF REF NO.⓪ AS FOLLOWINGS.
THE ADHESIVE SHOULD BE ATTACHED ON THE SCREW PORTION OF REF NO.⓪
TIGHTENING TORQUE: 6 TO 7 N·m.
ADHESIVE: LOCTITE 242 MADE BY HENKEL JAPAN LTD.
 - 6 ROTATION EXAMPLES ARE SHOWN FOR REF. NO. ⓪, ⓪, AND ⓪.

NO.	MATERIAL	FINISH . REMARKS	NO.	MATERIAL	FINISH . REMARKS
5	ALUMINUM ALLOY	NICKEL PLATING	10	ALUMINUM ALLOY	NICKEL PLATING
4	STAINLESS STEEL		9	SILICONE RUBBER	(RED)
3	PBT	(BLACK) UL94V-0	8	SILICONE RUBBER	(RED)
2	PBT	(BLACK) UL94V-0	7	STAINLESS STEEL	
1	ALUMINUM ALLOY	NICKEL PLATING	6	STAINLESS STEEL	

UNITS	SCALE	COUNT	DESCRIPTION OF REVISIONS	DESIGNED	CHECKED	DATE
mm	1 : 1	1	DIS-C-001463	HS. NAGANO	HY. KOBAYASHI	09. 10. 30

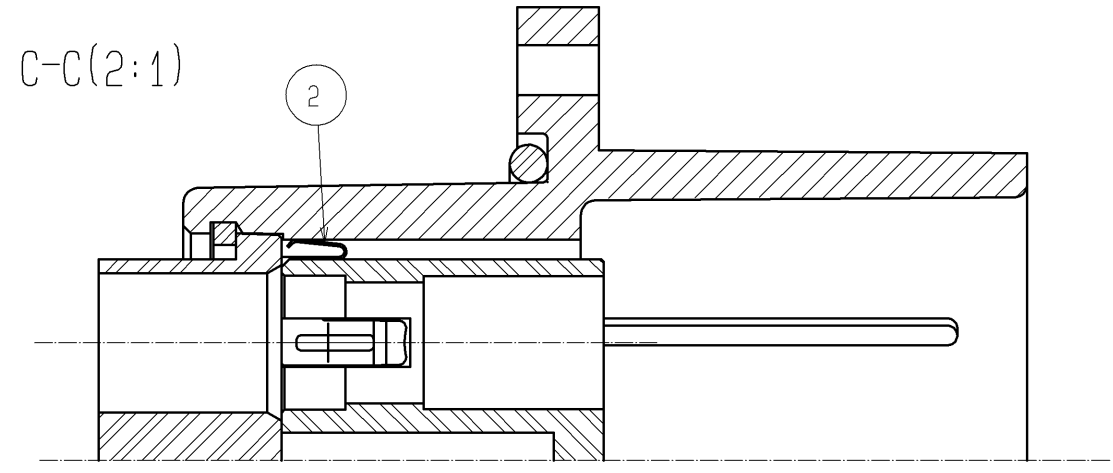
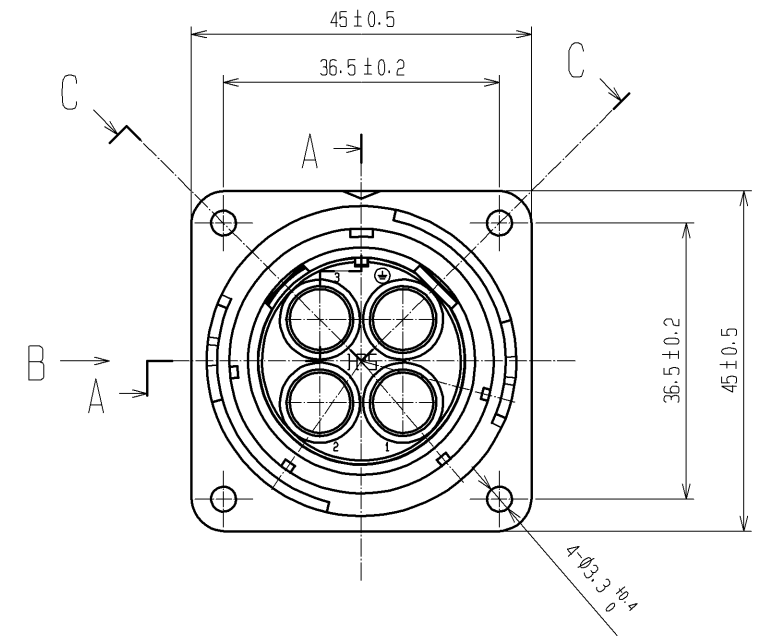
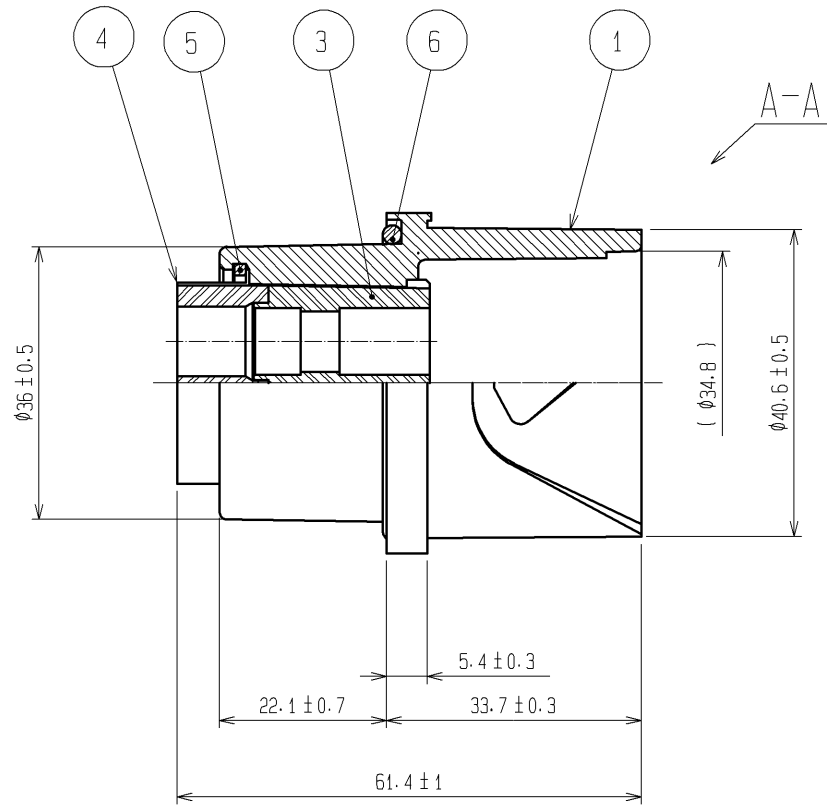
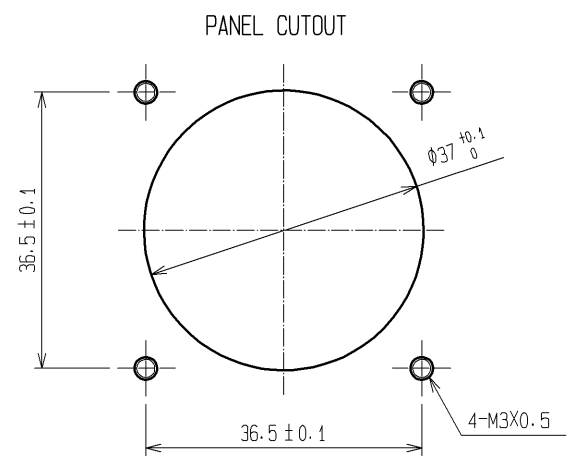
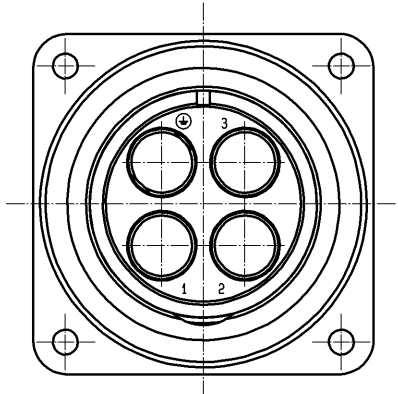
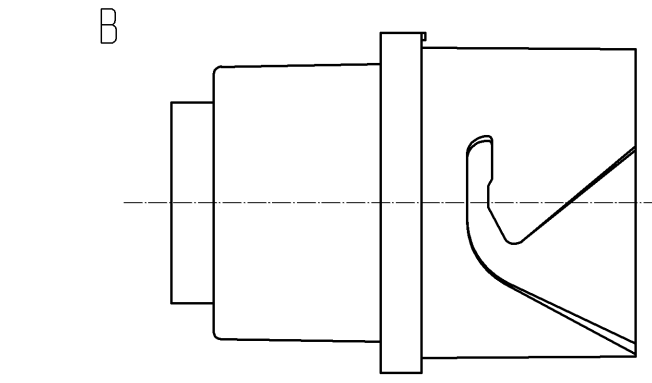
APPROVED	DATE	DRAWING NO.
SU. OBARA	09. 10. 05	EDC3-115596-00
CHECED	DATE	PART NO.
HY. KOBAYASHI	09. 10. 05	EM35WBP-4SC
DESIGNED	DATE	CODE NO.
HS. NAGANO	09. 10. 02	CL138-0008-3-00
DRAWN	DATE	
HS. NAGANO	09. 10. 02	



- NOTES
- ① THE RECOMMENDED TIGHTENING TORQUE REF NO. ① : 6 TO 7 N · m.
THE RECOMMENDED TIGHTENING TORQUE REF NO. ⑤ : 1.2 TO 1.5 N · m.
THE RECOMMENDED ADHESIVE OF REF NO. ①: LOCTITE 242 BY HENKEL JAPAN LTD.
 - ② WATER RESISTANCE, CABLE CLAMP FORCE, CABLE RETENTION FORCE IN AXIAL DIRECTION AND OTHER CHARACTERISTICS COULD VARY DEPENDING ON EACH CABLE CONSTRUCTION. CONFIRMATION IS REQUIRED PRIOR TO USE.
 - ③ THIS PRODUCT IS DELIVERED DISASSEMBLED.

NO.	MATERIAL	FINISH . REMARKS	NO.	MATERIAL	FINISH . REMARKS
3	POLYACETAL	(WHITE)			
2	SILICONE RUBBER	(BLACK)	5	STAINLESS STEEL	
1	ALUMINUM ALLOY	NIKEL PLATING	4	STAINLESS STEEL	

UNITS	SCALE	COUNT	DESCRIPTION OF REVISIONS	DESIGNED	CHECKED	DATE
mm	2 : 1	△				
APPROVED : SU. OBARA			09.10.20	DRAWING NO. EDC3-115589-00		
CHECKED : HY. KOBAYASHI			09.10.19	PART NO. EM35WCC-23		
DESIGNED : HS. NAGANO			09.10.19	CODE NO. CL138-0007-0-00		
DRAWN : HS. NAGANO			09.10.19	△ 1/1		



- NOTES
- 1 APPLICABLE CRIMPING CONTACT:EM-PC-133(CL138-0019-0)
 - 2 APPLICABLE CRIMP CONTACT EXTRACTION TOOL:EM-8-TP(CL150-0249-3)
 - 3 THE ASSEMBLY OF THIS PRODUCT APPLIES TO THE MANUAL ATAD-C0155.
 - 4 CHECK REF NO.⓪ IS PRPPERLY SET AT THE GROOVE OF REF. NO.⓪.
WHILE MOUNTING THE CONNECTOR, MAKE SURE THAT REF No.⓪ IS NOT CAUGHT.

NO.	MATERIAL	FINISH . REMARKS	NO.	MATERIAL	FINISH . REMARKS
3	PBT	(BLACK) UL94V-0	6	SILICONE RUBBER	(RED)
2	COPPER ALLOY	TIN PLATING	5	STAINLESS STEEL	
1	ALUMINUM ALLOY	NICKEL PLATING	4	PBT	(BLACK) UL94V-0

UNITS	SCALE	COUNT	DESCRIPTION OF REVISIONS	DESIGNED	CHECKED	DATE
mm	1 : 1	△	APPROVED : SU. OBARA 09.10.20			
			CHECED : HY. KOBAYASHI 09.10.19			
			DESIGNED : HS. NAGANO 09.10.19			
			DRAWN : HS. NAGANO 09.10.19			

DRAWING NO.	EDC3-115597-00
PART NO.	EM35WBR-4PC
CODE NO.	CL138-0009-6-00