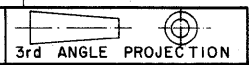


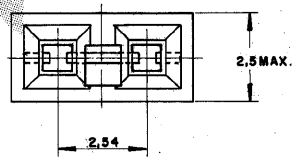
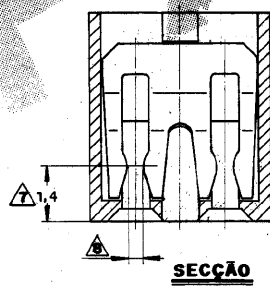
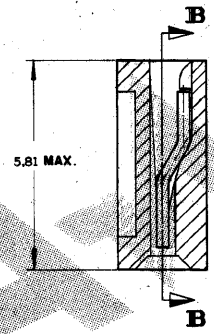
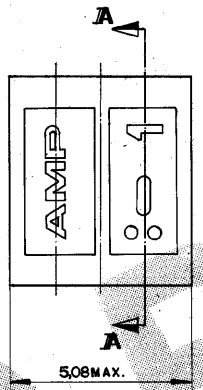
C 881545

DO NOT SCALE
DIMENSIONS IN mm.

METRIC



SEÇÃO A-A



NO.	DESCRIPTION	QTY	PART NO.
1		2-	- 8
2		2-	- 7
3		2-	- 6
4		2-	881545 - 5
5			
6			
7			
8			
9			
10			
11			
12			
13			
14			
15			
16			
17			
18			
19			
20			
21			
22			
23			
24			
25			
26			
27			
28			
29			
30			
31			
32			
33			
34			
35			
36			
37			
38			
39			
40			
41			
42			
43			
44			
45			
46			
47			
48			
49			
50			
51			
52			
53			
54			
55			
56			
57			
58			
59			
60			
61			
62			
63			
64			
65			
66			
67			
68			
69			
70			
71			
72			
73			
74			
75			
76			
77			
78			
79			
80			
81			
82			
83			
84			
85			
86			
87			
88			
89			
90			
91			
92			
93			
94			
95			
96			
97			
98			
99			
100			

OTHER TREATMENT	FINISH	MATERIAL	PART NUMBER
THIS DRAWING IS UNPUBLISHED RELEASED FOR PUBLICATION			
C CUSTOMER DWG for REFERENCE ONLY			
THIS DRAWING IS UNPUBLISHED RELEASED FOR PUBLICATION			
C COPYRIGHT 1988 BY AMP DO BRASIL LTDA S.P. ALL INTERNATIONAL RIGHTS RESERVED. AMP PRODUCTS MAY BE COVERED BY U.S. AND FOREIGN PATENTS AND/OR PATENTS PENDING.			
TOLERANCES UNLESS OTHERWISE STATED: DIM RANGE WIRE GAUGE SCALE			
DEC. ±0.5 ANGLES ±1°			
DR. <i>[Signature]</i> 11-09-88			
CHK. <i>[Signature]</i> 08-11-88			
APP. <i>[Signature]</i> 29/10/88			
DESCRIPTION: AMP SHUNT LOW PROFILE CONNECTOR ASSY			
AMP do BRASIL LTDA São Paulo, Brasil			
DWG NO: A2 SHEET: 2 of 2			
C 881545			

SEE SHEET 1 OF 2

REV	REVISION RECORD	DR	CHK	DATE
1	REVISED EC 180004003 H.C.			29/10/88