

# celpac<sup>®</sup> 2G

## Solid State Relays & Contactors



celduc<sup>®</sup> relais



[www.celduc.com](http://www.celduc.com)

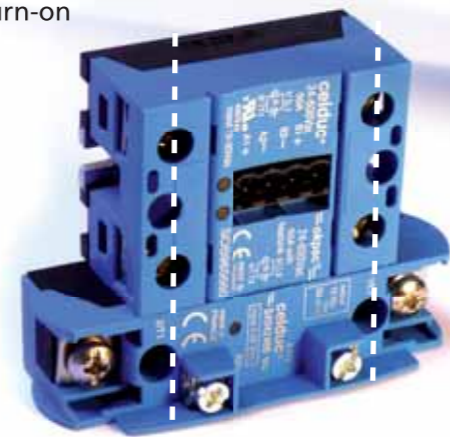


# Our range of Solid State & Contactors

The requirement for enhanced design, ease of installation, optimum life and the most competitive price is delivered by the new generation of celpac products.

## Performance & reliability :

- Fixing screws compatible with all hockey puck style relays (celduc SO and SC range)
- Maximum voltage up to 1600V (690VRMS), 600VAC and 1200VAC as standard
- Thyristor rating up to 95A (IRMS = 96A @ 100°C)
- Large input range : 3-32VDC with regulated current models
- AC input control available
- Input status yellow LED
- Over-voltage protection on input
- New generation of TMS<sup>2</sup> technology for thyristors for a longer life expectancy
- Quick and easy connections
- Designed according to European standards EN60947-4-3 (IEC947-4-3) and EN60950 (VDE0805 reinforced insulation) -UL-cUL
- IP20 protection with removable flaps (SU range) or cover (SA range)
- Other protection devices available as an option : RC snubber, VDR, self turn-on



Fixation screw compatible with hockey puck SSRs

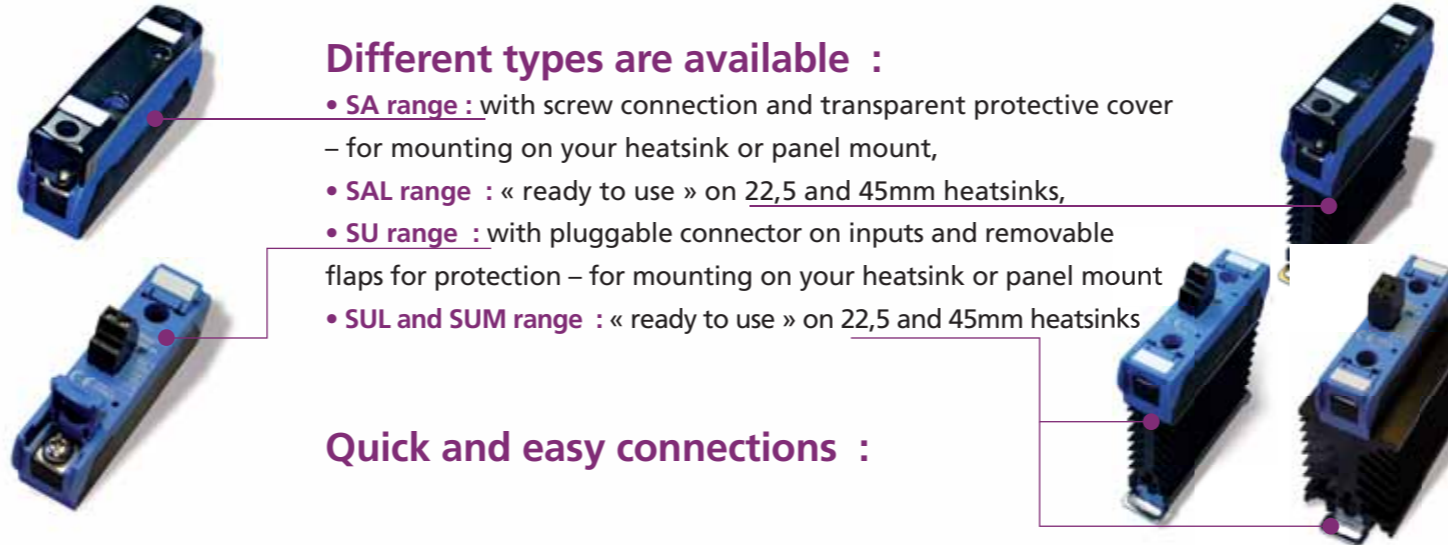
## Price-effective and compact solution :

- The 22,5 mm pitch of our Solid State contactors reduces space to the minimum
- Reduced assembling time, easy cabling
- Reduced maintenance thanks to a very long life expectancy
- One single screw driver for input and output

# celpac<sup>®</sup> 2G



## A cost-effective, reliable and compact solution !



### Different types are available :

- **SA range** : with screw connection and transparent protective cover – for mounting on your heatsink or panel mount,
- **SAL range** : « ready to use » on 22,5 and 45mm heatsinks,
- **SU range** : with pluggable connector on inputs and removable flaps for protection – for mounting on your heatsink or panel mount
- **SUL and SUM range** : « ready to use » on 22,5 and 45mm heatsinks

### Quick and easy connections :

	SA range	SU range
Power connections		
Input connections	Inputs with screws 	Inputs with pluggable connector 

## Standard characteristics

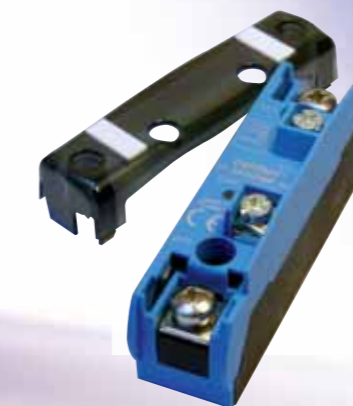
	SAxx1xx SUxx1xx	SAxx2xx SUxx2xx	SAxx3xxx SUxx3xxx	SAxx5xxx SUxx5xxx	SAxx7xxx SUxx7xxx
	SALxx1xxx SULxx1xxx	SALxx2xxx SULxx2xxx	SALxx3xxx SULxx3xxx	SALxx5xxx SULxx5xxx	SALxx7xxx SULxx7xxx
Nominal current	12A	25A	35A	50A	75A
I <sub>tsm</sub> (10ms) min	120	250A	320	530	1100
I <sup>2</sup> t (A <sup>2</sup> s) < 10ms (typical)	72	340	512	1404	6000
Operating temperature	-40 /+80°C	-40 /+80°C	-40 /+80°C	-40 /+80°C	-40 /+80°C
Storage temperature	-40/+125°C	-40/+125°C	-40/+125°C	-40/+125°C	-40/+125°C
Input / Output insulation and Output / Baseplate	4000VRMS	4000VRMS	4000VRMS	4000VRMS	4000VRMS



## SU7, SU8 and SU9 range :

- SU7 : Typical applications : motors AC-53 and inductive loads. Also use in phase angle control systems
- SU8 : Designed for most types of loads.
- SU9 : Typical applications : resistive loads AC-51.

Reference	Output voltage	Thyristor rating	V peak (V)	Control voltage	Commutation	Visualization & protection
SU765070	24-510VAC	50A	1200V	3,5-32VDC	Random	LED
SU842070	12-275VAC	25A	600V	3-32VDC	Zero-cross	LED, VDR
SU842770	12-275VAC	25A	600V	17-30VAC		
SU842970	12-275VAC	25A	600V	180-240VAC		
SU865070	24-510VAC	50A	1200V	3,5-32VDC		
SU865970	24-510VAC	50A	1200V	180-240VAC	Zero-cross	LED
SU867070	24-510VAC	75A	1200V	3,5-32VDC		
SU942460	12-280VAC	25A	600V	3-32VDC	Zero-cross	LED
SU963460	24-600VAC	35A	1200V	3,5-32VDC		
SU965460	24-600VAC	50A	1200V	3,5-32VDC		
SU967460	24-600VAC	75A	1200V	3,5-32VDC		



## SA8 and SA9 range :

- SA8 : Designed for most types of loads
- SA9 : Typical applications : resistive loads AC-51.

Reference	Output voltage	Thyristor rating	V peak (V)	Control voltage	Commutation	Visualization & protection
SA842070	12-275VAC	25A	600V	3-32VDC	Zero-cross	LED, VDR
SA941460	12-280VAC	12A	600V	3-32VDC		
SA942460	12-280VAC	25A	600V	3-32VDC		
SA943460	12-280VAC	35A	600V	3-32VDC		
SA945460	12-280VAC	50A	600V	3-32VDC	Zero-cross	LED
SA963460	24-600VAC	35A	1200V	3,5-32VDC		
SA965460	24-600VAC	50A	1200V	3,5-32VDC		

# celpac<sup>®</sup> 2G





## SUL8, SUL9 and SUM8 :

SUL8 and SUM8 : Designed for most types of loads.  
SUL9 : Typical applications : resistive loads AC-51.



Reference	Output voltage	Thyristor rating	Max. switching current at 25°C	V peak (V)	Control voltage	Commutation	Visualisation & protection
SUL842070	12-275VAC	25A	23A	600V	3-32VDC	Zero-cross	LED, VDR
SUL842970	12-275VAC	25A	23A	600V	180-240VAC		
SUL865070	24-510VAC	50A	32A	1200V	3,5-32VDC		
SUL865970	24-510VAC	50A	32A	1200V	180-240VAC		
SUL867070	24-510VAC	75A	35A	1200V	3,5-32VDC		
SUM865070	24-510VAC	50A	45A	1200V	3,5-32VDC		
SUL942460	12-280VAC	25A	23A	600V	3-32VDC		LED
SUL963460	24-600VAC	35A	30A	1200V	3,5-32VDC		
SUL967460	24-600VAC	75A	35A	1200V	3,5-32VDC		



## SAL9 range

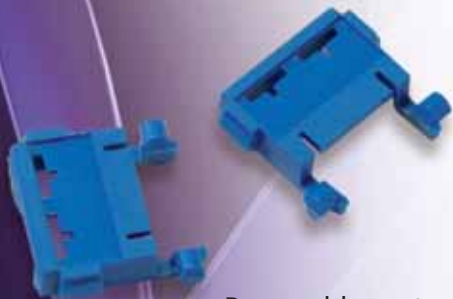
Typical applications : resistive loads AC-51.

Reference	Output voltage	Thyristor rating	Max. switching current at 25°C	V peak (V)	Control voltage	Commutation	Visualisation & protection
SAL941460	12-280VAC	12A	12A	600V	3-32VDC	Zero-cross	LED
SAL942460	12-280VAC	25A	23A	600V	3-32VDC		
SAL965460	24-600VAC	50A	32A	1200V	3,5-32VDC		



Flaps, covers and connectors have to be ordered separately if necessary.

# Accessories for celpac<sup>®</sup>



Removable protection flaps  
(for SA and SU ranges)  
Standard for SU range  
Ref : 1K523000



Protection cover  
(standard for SA range)  
Ref : 1K522000



Marking labels to be mounted  
on protection flaps or cover.  
Ref : 1MZ09000



Removable connectors



## A large range of heatsinks



Our distributor



[www.celduc.com](http://www.celduc.com)

5, rue Ampère - BP 30004 - 42290 SORBIERS - FRANCE  
Tel : +33(0)4 77 53 90 20 - Fax : +33 (0)4 77 53 85 51  
Tel export : +33(0)4 77 53 90 21  
[celduc-relais@celduc.com](mailto:celduc-relais@celduc.com)