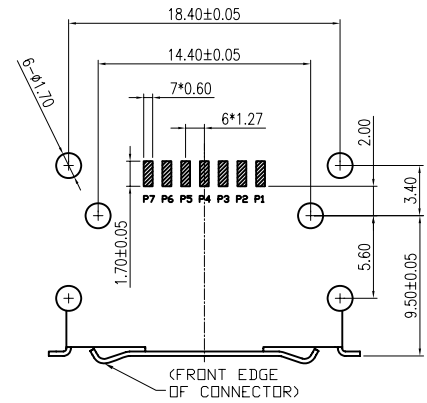
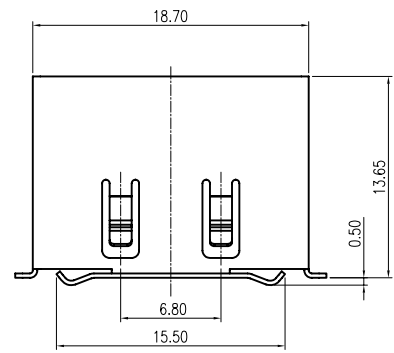


REV.	ZONE	LTR	DESCRIPTION	DATE	REVISOR	APPD
------	------	-----	-------------	------	---------	------

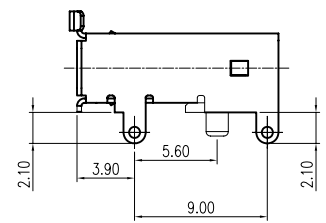
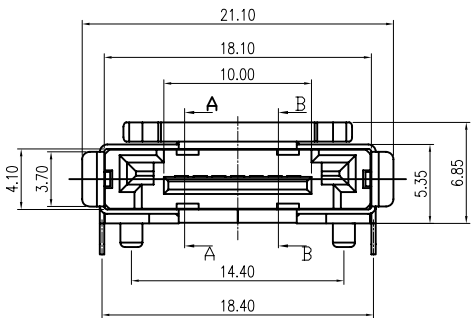
ORDERING INFORMATION:

6SA U 07 MP - 3 * 0 B - 2
 (1) (2) (3) (4) (5) (6) (7) (8) (9)

- (1) SERIES NUMBER:
6SA : SERIAL ATA CONNECTOR
- (2) TAIL CONSTRUCTION TYPE
U : RIGHT ANGLE SMT TYPE
- (3) NO. OF POSITION:
07 :7POSITIONS
- (4) CONTACT &CONNECTING TYPES:
MP : PLUG ,METAL SHELL TYPE
- (5) COLOR CODES:
3 :BLACK
N :DARK RED
- (6) PLATING OF CONTACT :
0 : GOLD FLASH OVER NICKEL
2 : 15u"GOLD OVER NICKEL
3 : 30u"GOLD OVER NICKEL
- (7) TAIL LENGTH :
0 : SMT TYPE
- (8) SUFFIX NO1 :
B : WITHOUT LOGO
- (9) SUFFIX NO2 :
2: WITHOUT BOTTOM SPRING



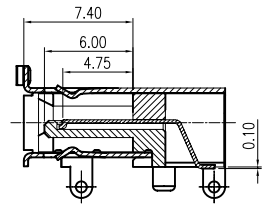
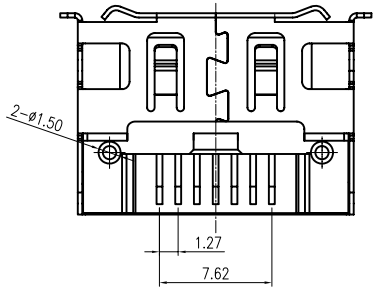
RECOMMENDED PC BOARD LAYOUT



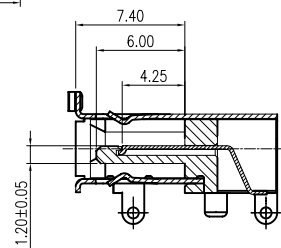
RoHS Compliant

NOTE:

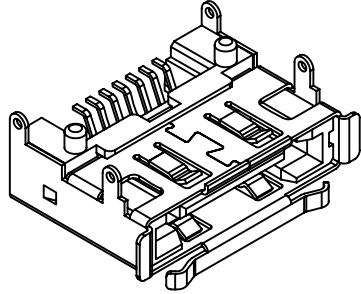
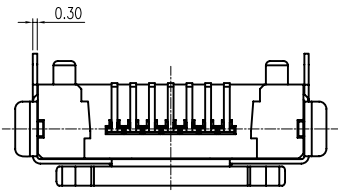
- 1.MATERIAL:
HOUSING:HIGH TEMPERATURE THERMOPLASTIC,UL94V-0
CONTACT:BRASS,GOLD PLATING OVER NICKELON CONTACT AREA,TIN PLATING ON SOLDER AREA
SHELL:BRASS,NICKEL PLATED
- 2.MECHANICAL:
INSERTION FORCE: 4.5Kgf Max.
WITHDRAWAL FORCE: 1Kgf Min.
DURABILITY: 2500 CYCLES
- 3.ELECTRICAL SPECIFICATION:
OPERATION VOLTAGE: 100V AC Max.
CURRENT RATING: 1.5A PER CONTACT
CONTACT RESISTANCE: 45m ohm Max.
AFTER PHYSICAL AND ENVIRONMENTAL TESTING.
INSULATION RESISTANCE: 1000M OHM Min.
DIELECTRIC WITHSTANDING VOLTAGE: 500V AC
- 4.ENVIRONMENTAL:
OPERATION TEMPERATURE: -25°C~+85°C



SECTION A-A



SECTION B-B



PART NO.

MATERIAL	TOLERANCE UNSPECIFIED		SCALE	UNIT	
	.0 0 0 ± 0.20 .0 0 ± 0.25 .0 ± 0.38 ± ANGLE ± 2°				1:1
FINISH	Draw	NAME	SHEET		
	Designer			SATA II 7PIN PLUG RIGHT ANGLE SMT TYPE (METAL SHELL TYPE)	1/1
	Checked				
Approved	Wujian 4/18 06' Peterhu John	R-S16SA-39	REV. 1.0		