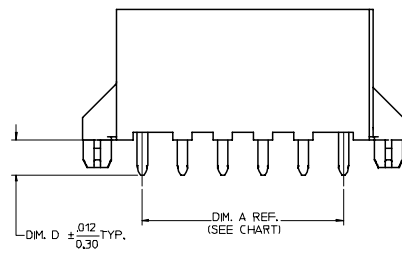
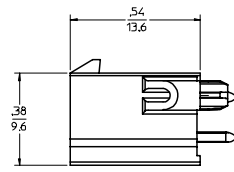
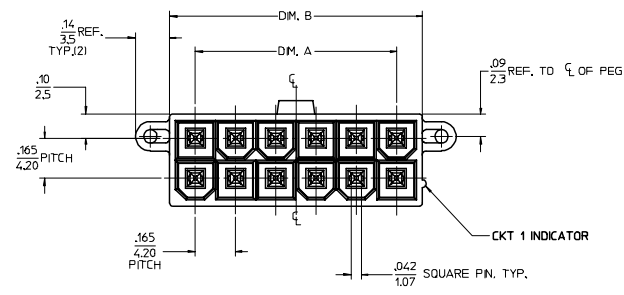


ISOMETRIC VIEW
(12 CKT - SHOWN)

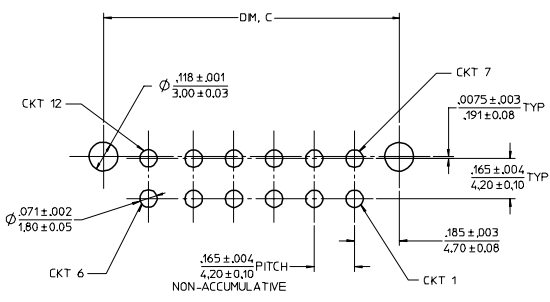


NOTES:

1. MATERIALS:
HOUSING - LIQUID CRYSTAL POLYMER (LCP), COLOR: BLACK
TERMINAL - BRASS ALLOY C26000
2. TERMINAL PLATING: 100 micro" TIN OVER 50 micro" NICKEL
3. PRODUCT SPECIFICATION: PS-46207-001
4. PACKAGING SPECIFICATION: PK-46207-001

CIRCUIT SIZE	MATERIAL NUMBER	DM. A	DM. B	DM. C	DM. D	PCB THK.
04	462070004	0.165/4.20	0.38/9.6	0.535/13.60	0.144/3.66	0.062
06	462070006	0.331/8.40	0.54/13.8	0.701/17.80	0.144/3.66	0.062
08	462070008	0.496/12.60	0.71/18.0	0.866/22.00	0.144/3.66	0.062
10	462070010	0.661/16.80	0.87/22.2	1.031/26.20	0.144/3.66	0.062
12	462070012	0.827/21.00	1.04/26.4	1.197/30.40	0.144/3.66	0.062
* 14	462070014	0.992/25.20	1.21/30.6	1.362/34.60	0.144/3.66	0.062
* 16	462070016	1.160/29.40	1.37/34.8	1.528/38.80	0.144/3.66	0.062
* 18	462070018	1.323/33.60	1.54/39.0	1.693/43.00	0.144/3.66	0.062
* 20	462070020	1.488/37.80	1.70/43.2	1.858/47.20	0.144/3.66	0.062
* 22	462070022	1.654/42.00	1.87/47.4	2.024/51.40	0.144/3.66	0.062
24	462070024	1.819/46.20	2.03/51.6	2.189/55.60	0.144/3.66	0.062
04	462070104	0.165/4.20	0.38/9.6	0.535/13.60	0.176/4.46	0.093
06	462070106	0.331/8.40	0.54/13.8	0.701/17.80	0.176/4.46	0.093
08	462070108	0.496/12.60	0.71/18.0	0.866/22.00	0.176/4.46	0.093
10	462070110	0.661/16.80	0.87/22.2	1.031/26.20	0.176/4.46	0.093
12	462070112	0.827/21.00	1.04/26.4	1.197/30.40	0.176/4.46	0.093
* 14	462070114	0.992/25.20	1.21/30.6	1.362/34.60	0.176/4.46	0.093
* 16	462070116	1.160/29.40	1.37/34.8	1.528/38.80	0.176/4.46	0.093
* 18	462070118	1.323/33.60	1.54/39.0	1.693/43.00	0.176/4.46	0.093
* 20	462070120	1.488/37.80	1.70/43.2	1.858/47.20	0.176/4.46	0.093
* 22	462070122	1.654/42.00	1.87/47.4	2.024/51.40	0.176/4.46	0.093
24	462070124	1.819/46.20	2.03/51.6	2.189/55.60	0.176/4.46	0.093
04	462070204	0.165/4.20	0.38/9.6	0.535/13.60	0.207/5.26	0.125
06	462070206	0.331/8.40	0.54/13.8	0.701/17.80	0.207/5.26	0.125
08	462070208	0.496/12.60	0.71/18.0	0.866/22.00	0.207/5.26	0.125
10	462070210	0.661/16.80	0.87/22.2	1.031/26.20	0.207/5.26	0.125
12	462070212	0.827/21.00	1.04/26.4	1.197/30.40	0.207/5.26	0.125
* 14	462070214	0.992/25.20	1.21/30.6	1.362/34.60	0.207/5.26	0.125
* 16	462070216	1.160/29.40	1.37/34.8	1.528/38.80	0.207/5.26	0.125
* 18	462070218	1.323/33.60	1.54/39.0	1.693/43.00	0.207/5.26	0.125
* 20	462070220	1.488/37.80	1.70/43.2	1.858/47.20	0.207/5.26	0.125
* 22	462070222	1.654/42.00	1.87/47.4	2.024/51.40	0.207/5.26	0.125
24	462070224	1.819/46.20	2.03/51.6	2.189/55.60	0.207/5.26	0.125

* DESIGNATES PART NOT RELEASED. CONTACT FACTORY FOR AVAILABILITY.



RECOMMENDED PCB HOLE LAYOUT COMPONENT SIDE

#46207 WAS 46206 IEC NO. UCP2007-0849 DRAWN BY: DROSCA CHECKED BY: BWIRKUS APPROVED BY: BWIRKUS DATE: 08/07/2006 DATE: 08/07/2006 DATE: 08/07/2006	QUALITY SYMBOLS	GENERAL TOLERANCES (UNLESS SPECIFIED)	DIMENSION STYLE	SCALE	DESIGN UNITS	THIRD ANGLE PROJECTION
	▽ 0	Z PLACES ± --- ± ---	IN/MM	4:1	METRIC	
	▽ 0	3 PLACES ± --- ± .005				
	▽ 0	Z PLACES ± 0.13 ± .010				
		1 PLACE ± 0.25 ± ---				
		ANGULAR ±1/2°				
	▽ 0	DRAFT WHERE APPLICABLE MUST REMAIN WITHIN DIMENSIONS	SEE TABLE			
			MATERIAL NO.	DOCUMENT NO.		SHEET NO.
				SD-46207-001		1 OF 1

THIS DRAWING CONTAINS INFORMATION THAT IS PROPRIETARY TO MOLEX INCORPORATED AND SHOULD NOT BE USED WITHOUT WRITTEN PERMISSION