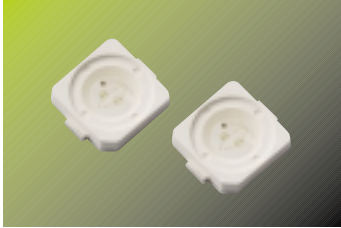


# SLTNG25024N



Top View LED (Green Color)

Dimension(mm) : 5.2 X 6.0 X 1.3T

AlGaN/AlN Chip

Long Time Reliability

Indoor & Outdoor Display

### Absolute Maximum Ratings

T<sub>a</sub>=25°C

Item	I <sub>F</sub> (mA)	*I <sub>FP</sub> (mA)	T <sub>Stg</sub> (°C)	T <sub>opr</sub> (°C)
Value	30	100	-40 ~ 100	-30 ~ 85

\* Pulse condition : 10% Duty and 10ms width

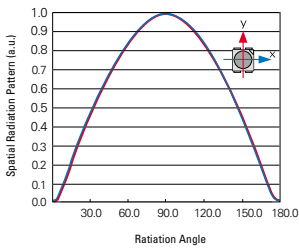
### Electrical Characteristics

T<sub>a</sub>=25°C

Item	Symbol	Condition	Rank	Min.	Typ.	Max.	Unit
Forward Voltage*	V <sub>F</sub>	I <sub>F</sub> =40mA	S	2.9	-	3.8	V
Reverse Voltage	V <sub>R</sub>	I <sub>R</sub> =10mA	-	0.6	-	2.0	

\* Tolerance : V<sub>F</sub>: ±0.1

### Radiation Diagram



### Luminous Intensity

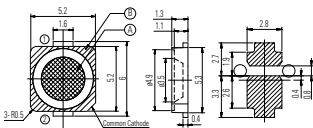
T<sub>a</sub>=25°C

Item	Symbol	Condition	Rank	Min.	Typ.	Max.	Unit
Luminous Intensity*	I <sub>v</sub>	I <sub>F</sub> =40mA	S	2000	3000	4000	mcd

\* Luminous intensity measuring equipment : CAS140B

\* Tolerance : I<sub>v</sub>: ±10%

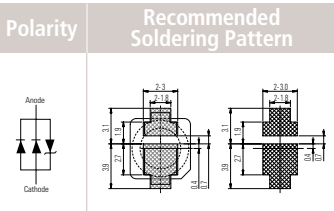
### Package Outline



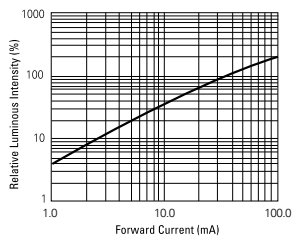
1. Tolerance is ±0.1mm
2. Do not place pressure on the encapsulating resin ("A")
3. The maximum compressing force is 15N on the polymer ("B")

Item	Symbol	Condition	Rank	Min.	Typ.	Max.	Unit
Dominant Wavelength*	λ <sub>D</sub>	I <sub>F</sub> =40mA	L	523	-	530	nm
			M	530	-	537	

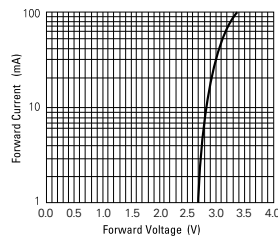
\* Tolerance : λ<sub>D</sub>: ±2nm



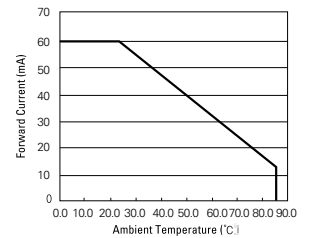
Relative Luminous Intensity vs. Forward Current



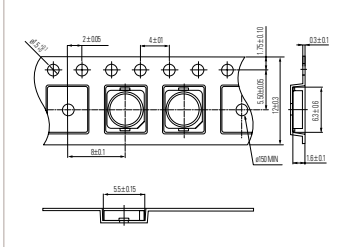
Forward Current vs. Forward Voltage



Forward Current Derating Curve



### Carrier Tape



Spectrum Distribution

