

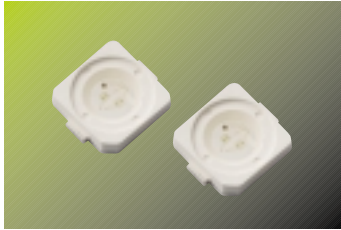
**5252 Series**

Blue

Middle Power LED



# SLTNNB25024N



Top View LED (Blue Color)

Dimension(mm) : 5.2 X 6.0 X 1.3T

AlGaN/P/AlN Chip

Long Time Reliability

Indoor & Outdoor Display

## Absolute Maximum Ratings

T<sub>a</sub>=25°C

Item	I <sub>F</sub> (mA)	*I <sub>FP</sub> (mA)	T <sub>Stg</sub> (°C)	T <sub>opr</sub> (°C)
Value	30	100	-40 ~ 100	-30 ~ 85

\* Pulse condition : 10% Duty and 10ms width

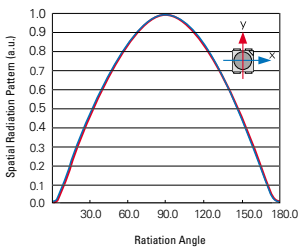
## Electrical Characteristics

T<sub>a</sub>=25°C

Item	Symbol	Condition	Rank	Min.	Typ.	Max.	Unit
Forward Voltage*	V <sub>F</sub>	I <sub>F</sub> =40mA	S	2.9	-	3.8	V
Reverse Voltage**	V <sub>R</sub>	I <sub>R</sub> =10mA	-	0.5	1.0	1.5	

\* Tolerance : V: ±0.1

## Radiation Diagram



## Luminous Intensity

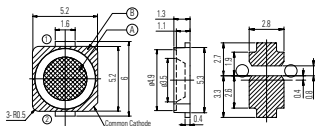
T<sub>a</sub>=25°C

Item	Symbol	Condition	Rank	Min.	Typ.	Max.	Unit
Luminous Intensity*	I <sub>v</sub>	I <sub>F</sub> =40mA	S	250	-	-	mcd

\* Luminous intensity measuring equipment : CA5140B

\* Tolerance : I<sub>v</sub>: ±10%

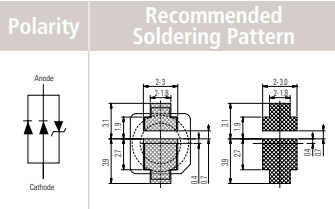
## Package Outline



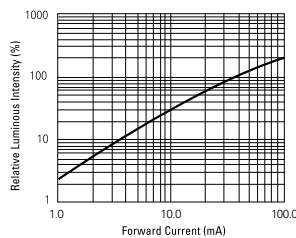
1. Tolerance is ±0.1mm
2. Do not place pressure on the encapsulating resin ("A")
3. The maximum compressing force is 15N on the polymer ("B")

Item	Symbol	Condition	Rank	Min.	Typ.	Max.	Unit
Dominant Wavelength*	λ <sub>D</sub>	I <sub>F</sub> =40mA	Q	450.0	-	457.5	nm
			R	457.5	-	465.0	

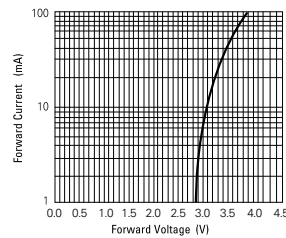
\* Tolerance : λ<sub>D</sub>: ±2nm



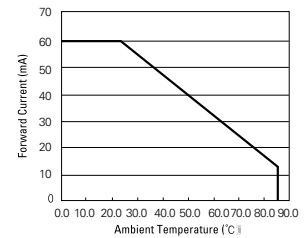
## Relative Luminous Intensity vs. Forward Current



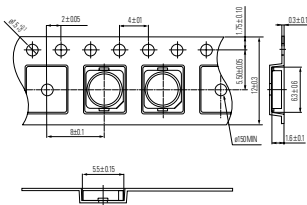
## Forward Current vs. Forward Voltage



## Forward Current Derating Curve



## Carrier Tape



## Spectrum Distribution

