

5252 Series

Amber

Middle Power LED



SLTNN A25024N



Top View LED (Amber Color)

Dimension(mm) : 5.2 X 6.0 X 1.3T

AlGaInP/AlN Chip

Long Time Reliability

Indoor & Outdoor Display

Absolute Maximum Ratings

T_a=25°C

Item	I _F (mA)	*I _{FP} (mA)	T _{Stg} (°C)	T _{opr} (°C)
Value	30	100	-40 ~ 100	-30 ~ 85

* Pulse condition : 10% Duty and 10ms width

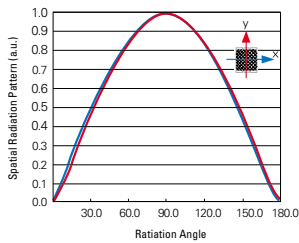
Electrical Characteristics

T_a=25°C

Item	Symbol	Condition	Rank	Min.	Typ.	Max.	Unit
Forward Voltage*	V _F	I _F =40mA	S	1.7	-	2.6	V
Reverse Current	I _R	I _R =5V	-	-	-	100	μA

* Tolerance : V_F: ±0.1

Radiation Diagram



Luminous Intensity

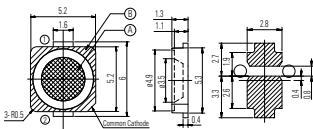
T_a=25°C

Item	Symbol	Condition	Rank	Min.	Typ.	Max.	Unit
Luminous Intensity*	I _v	I _F =40mA	S	800	-	-	mcd

* Luminous intensity measuring equipment : CAS140B

* Tolerance : I_v: ±10%

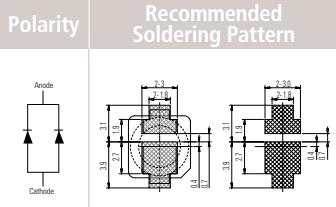
Package Outline



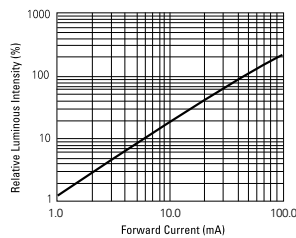
1. Tolerance is ±0.1mm
2. Do not place pressure on the encapsulating resin ("A")
3. The maximum compressing force is 15N on the polymer ("B")

Item	Symbol	Condition	Rank	Min.	Typ.	Max.	Unit
Dominant Wavelength*	λ _D	I _F =40mA	G	583	-	589	nm
			H	589	-	595	

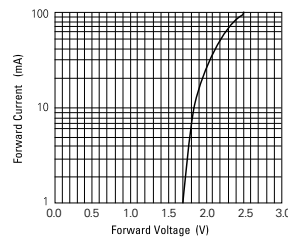
* Tolerance : λ_D: ±2nm



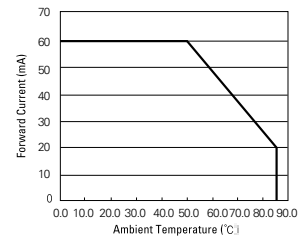
Relative Luminous Intensity vs. Forward Current



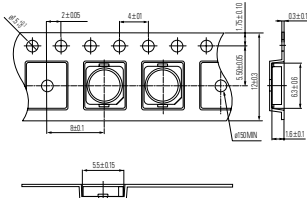
Forward Current vs. Forward Voltage



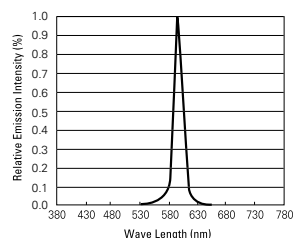
Forward Current Derating Curve



Carrier Tape



Spectrum Distribution



CIE Coordination