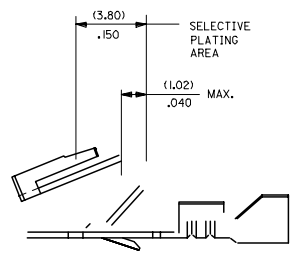
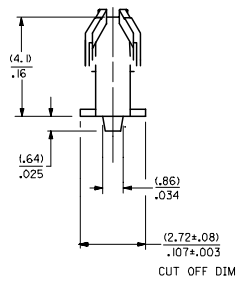
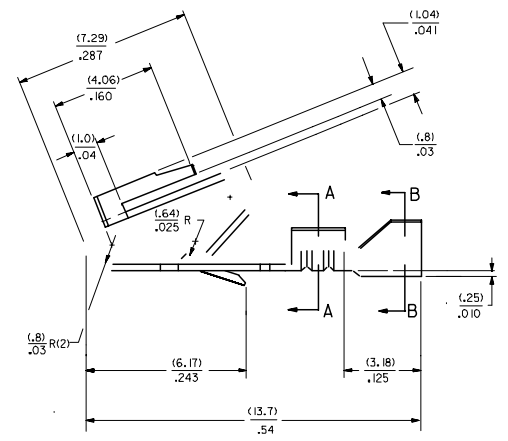
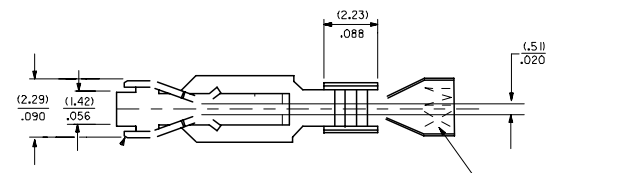
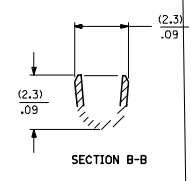


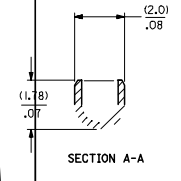
- NOTES
2. CRIMP FOR 22 TO 26 GA. WIRE WITH MAX. INSULATION DIA. OF (1.65)/.065
 3. PLATINGS CONFORM TO MOLEX ENG. STD. SDES-88.
 4. DIMENSIONS GIVEN ACROSS CENTERLINES ARE SYMMETRICAL ABOUT THOSE CENTERLINES WITHIN HALF THE TOTAL TOLERANCE.
 5. PARTS CONFORM TO PRODUCT SPECIFICATION PS-40-02.



SELECTIVE PLATING AREA



SECTION B-B

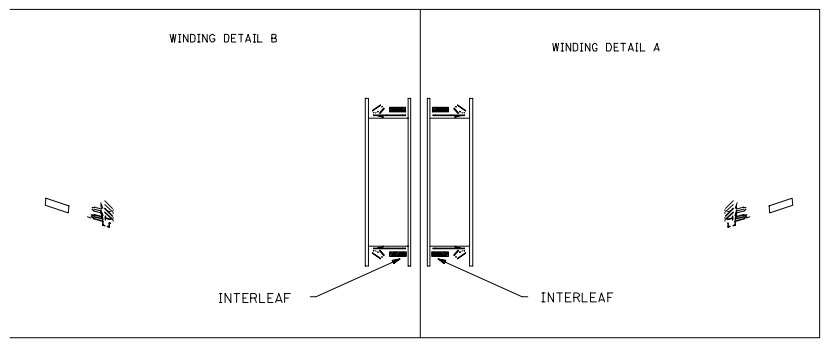


SECTION A-A

7258-1-1
 MAT'L. (.27) .0106 THK
 BLANK=BRASS
 A=PHOS. BRONZE
 FORM
 BLANK= CHAIN PER DETAIL B
 A=CHAIN PER DETAIL A
 L= LODSE

PLATING PER SDES- 88
 (909) * OVERALL HOT TIN DIP: .00254 MICROMETERS MIN.
 (558) SELECT GOLD: .00076 MICROMETERS MIN.
 OVERALL GOLD FLASH: .00005 MICROMETERS MIN.
 OVERALL NICKEL UNDERPLATE: .00127 MICROMETERS MIN.
 (561) SELECT GOLD: .00076 MICROMETERS MIN.
 OVERALL NICKEL UNDERPLATE: .00127 MICROMETERS MIN.

*THE PRIMARY SHIPPING CARTON WILL BE LABELED "COMPLIANT TO RoHS DIRECTIVE 2002/95/EC AND ELV ANNEX II OF DIRECTIVE 2000/53/EC." CARTONS WITHOUT THIS LABEL MAY CONTAIN PRODUCT WITH TI - - - TI



INTERLEAF

INTERLEAF

20 19 18 17 16 15 14 13 12 11 10 9 8 7 6 5 4 3 2 1

7258-(*)*

7258-A(*)*

PART NO.	ENG. NO.	PART NO.	ENG. NO.	PART NO.	ENG. NO.	PART NO.	ENG. NO (SUFFIX ONLY)	PART NO.	ENG. NO (SUFFIX ONLY)	VOID CKT.	PART NO.	ENG. NO (SUFFIX ONLY)	VOID CKT.
08-50-0183	7258-(P909)	08-04-0001	7258-A(999)										
08-50-0185	7258-(P909)IL	08-65-0121	7258-A(P56)IL	ES-276-P561									
08-56-0181	7258-(503)	08-65-0122	7258-A(P56)IL										
08-56-0182	7258-(503)IL	08-56-0123	7258-A(P558)	MAKE FROM									
08-50-0283	7258-(P909)IA	08-56-0124	7258-A(P558)IL	7258-A(P56)IL									
			7258-A(56)IL										
			7258-A(56)IL										
		08-52-0124	7258-A(P909)										
		08-52-0125	7258-A(P909)IL										
		08-65-0126	7258-A(P555)										
		08-65-0127	7258-A(P555)IL	ES-276-P555									
		08-58-0133	7258-A(550)IL	MAKE FROM									
		08-58-0134	7258-A(550)IL	7258-A(P555)									

COLUMN NO. 1 CONT. IN COLUMN NO. SHEET NO. COLUMN NO. 2 CONT. IN COLUMN NO. SHEET NO. COLUMN NO. 3 CONT. IN COLUMN NO. SHEET NO. COLUMN NO. 4 CONT. IN COLUMN NO. SHEET NO. COLUMN NO. 4 CONT. IN COLUMN NO. SHEET NO. COLUMN NO. 4 CONT. IN COLUMN NO. SHEET NO.

CHANGE TO ME10 IEC NO: UCP2005-0964 DRAWN BY: JJS CHKCD: SAMEC 2006040909 APPR: MARGULLIS 2006041005 T1 REV DESCRIPTION	QUALITY SYMBOLS ▽=0 ▽=0	GENERAL TOLERANCES (UNLESS SPECIFIED) <table border="1"> <tr> <th></th> <th>mm</th> <th>INCH</th> </tr> <tr> <td>4 PLACES</td> <td>± .005</td> <td>± .0004</td> </tr> <tr> <td>3 PLACES</td> <td>± .002</td> <td>± .0001</td> </tr> <tr> <td>2 PLACES</td> <td>± .001</td> <td>± .0001</td> </tr> <tr> <td>1 PLACE</td> <td>± .0005</td> <td>± .0001</td> </tr> </table> ANGULAR ±1/2°		mm	INCH	4 PLACES	± .005	± .0004	3 PLACES	± .002	± .0001	2 PLACES	± .001	± .0001	1 PLACE	± .0005	± .0001	DIMENSION STYLE IN/MM DRAWN BY: JJS DATE: 12/07/87 CHECKED BY: PATEL DATE: 12/07/87 APPROVED BY: LENZ DATE: 12/07/87	SCALE: --- DESIGN UNITS: INCH THIRD ANGLE PROJECTION
		mm	INCH																
	4 PLACES	± .005	± .0004																
	3 PLACES	± .002	± .0001																
2 PLACES	± .001	± .0001																	
1 PLACE	± .0005	± .0001																	
DRAFT WHERE APPLICABLE MUST REMAIN WITHIN DIMENSIONS		MATERIAL NO.: SEE CHART SIZE: D	TITLE: TRIFURCON TERMINAL CRIMP TYPE MOLEX INCORPORATED DOCUMENT NO.: SD-7258 SHEET NO.: 2																
THIS DRAWING CONTAINS INFORMATION THAT IS PROPRIETARY TO MOLEX INCORPORATED AND SHOULD NOT BE USED WITHOUT WRITTEN PERMISSION																			

19 18 17 16 15 14 13 12 11 10 9 8 7 6 5 4 3 2 1