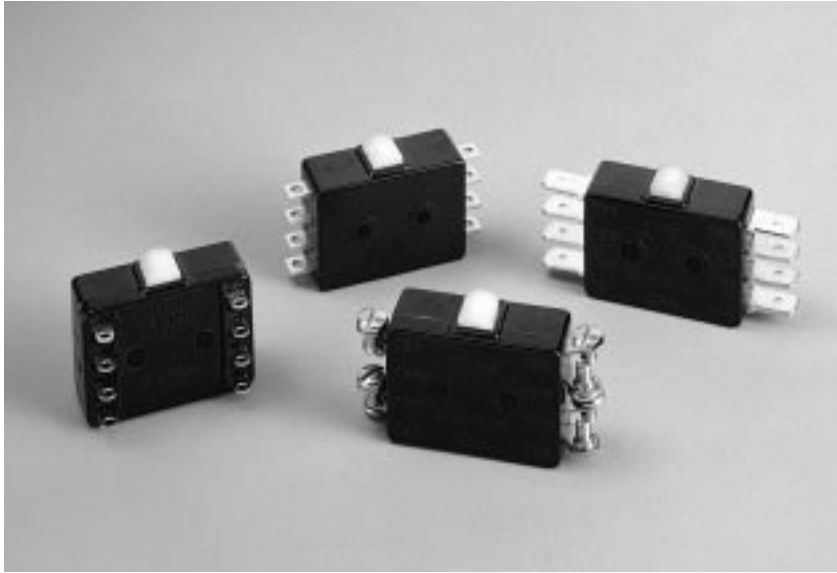


# Type 22 – Miniature, 10 Amp, Double-Break

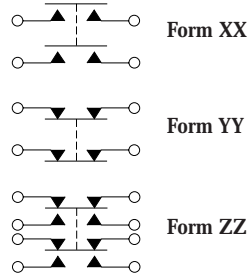


### Typical Applications

- Pressure control sensors
- Pendant controls
- Door openers for transit equipment
- Valve actuators
- Lift trucks



actual size



### Features

- Contains two individual switching elements which function simultaneously (within .004" of plunger travel)
- Fine silver contacts are standard; Gold-plated contacts also available
- Wide variety of terminals and actuators
- Approval: UL

### Mechanical Characteristics

- Pretravel: .060 max
- Overtravel: .015 min
- Operating Force: 17 ± 5 oz
- Release Force: 4 oz min
- Movement Differential: .030 ± .009
- Operating Point: .505 ± .011 (from mounting holes)

### Ordering Information

Part Number	Circuit	Terminals
22-104	DPDT-DB (Form ZZ)	End Solder
22-204	DPDT-DB (Form ZZ)	#4 Screw
22-304	DPDT-DB (Form ZZ)	Side Solder
22-504	DPDT-DB (Form ZZ)	Quick Disconnect .250

### Actuators – Mechanical Characteristics

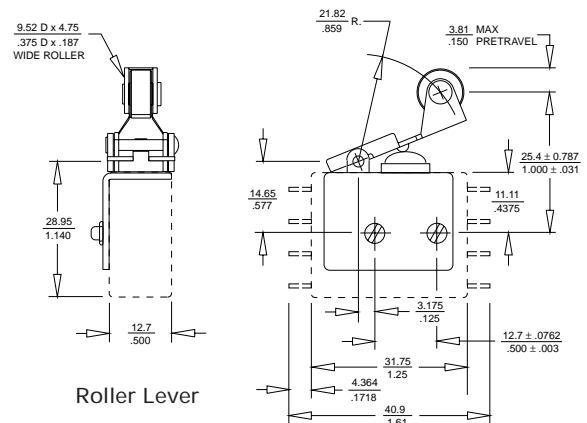
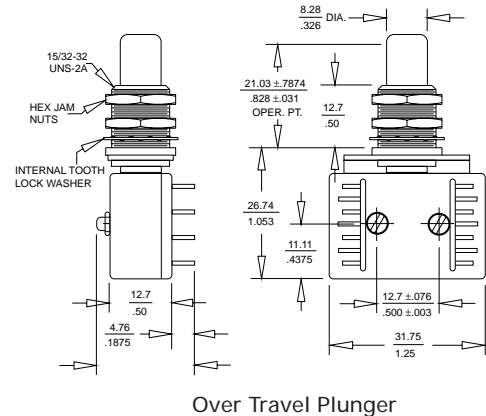
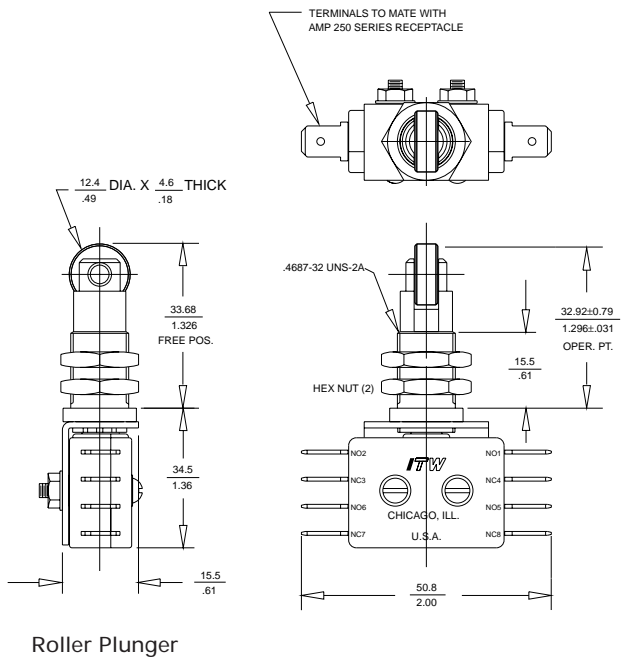
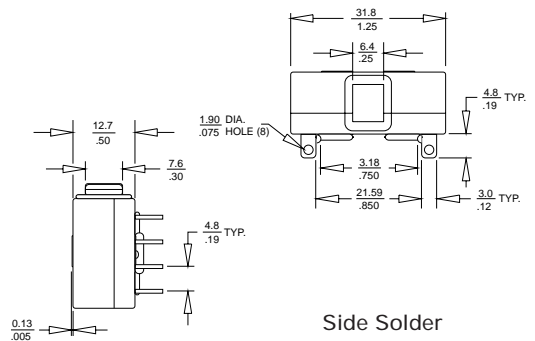
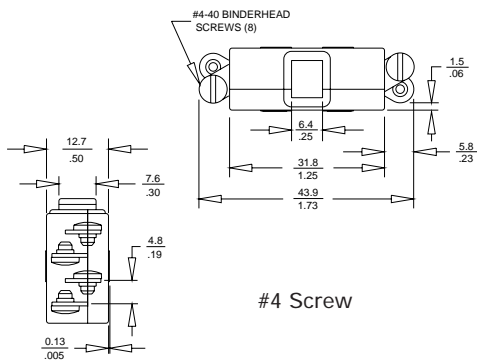
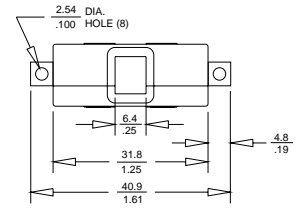
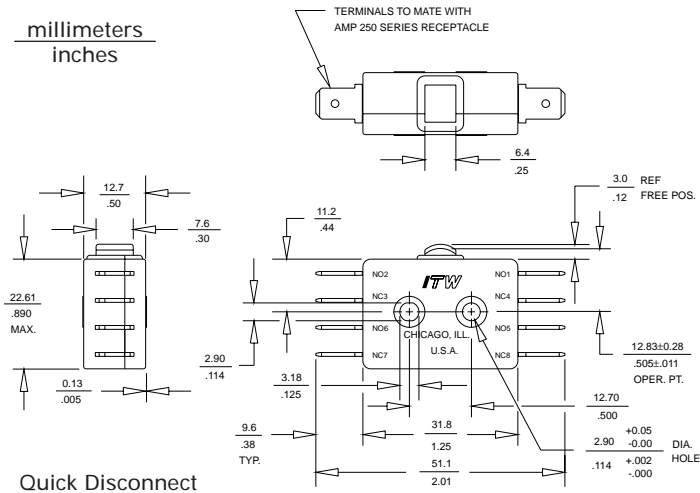
Part No.	Actuator	Operating Force	Release Force	Pre-Travel	Over-Travel	Movement Differential	Operating Point
72-1160	Roller Lever (1)	10 oz max	1.5 oz min	.150 max	.035 min	.070 ± 015	1.000 ± 031
72-2080	Over Travel (2) Plunger	17 ± 5 oz	4 oz min	.060 max	.215 min	.030 ± 007	.828 ± 031
72-2150	Roller Plunger	17 ± 5 oz	4 oz min	.060 max	.140 min	.028 ± 007	1.296 ± 031



actual size

(1) when used with 22-104 Basic Switch or 22-204 Basic Switch  
 (2) when used with 22-304 Basic Switch

millimeters  
inches



### Electrical Characteristics

Circuitry	125/250 VAC	28 VDC
DPST-DB NO or NC (Form XX or YY)	10 amp (75-80% PF) ½ HP 125 VAC	15 amp Res 10 amp Ind
DPDT-DB (Form ZZ)	¾ HP 250 VAC	7 amp Ind 10 amp Res