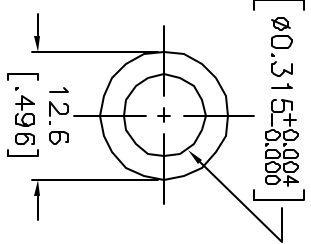
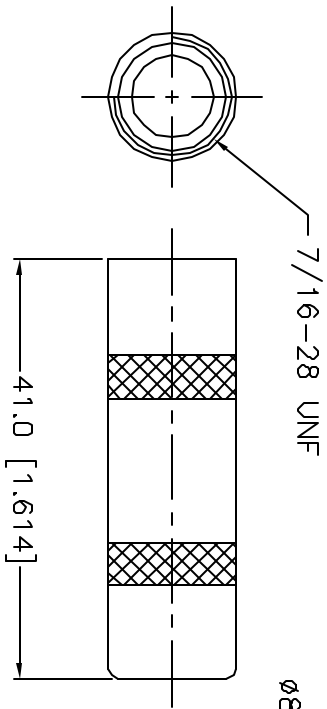
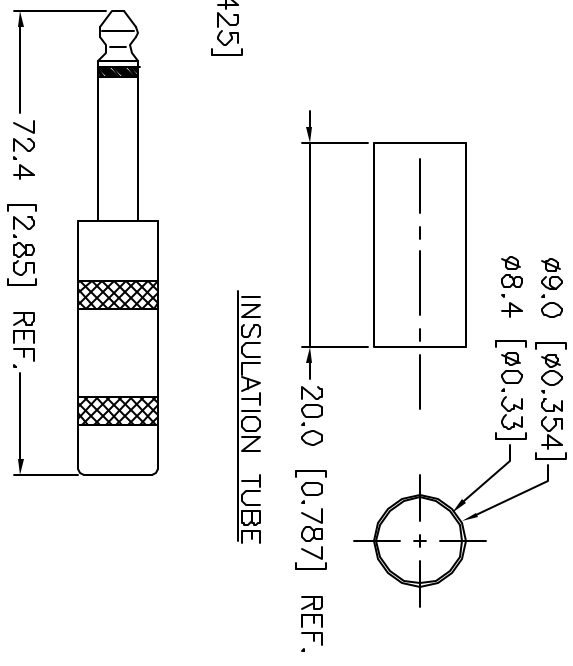
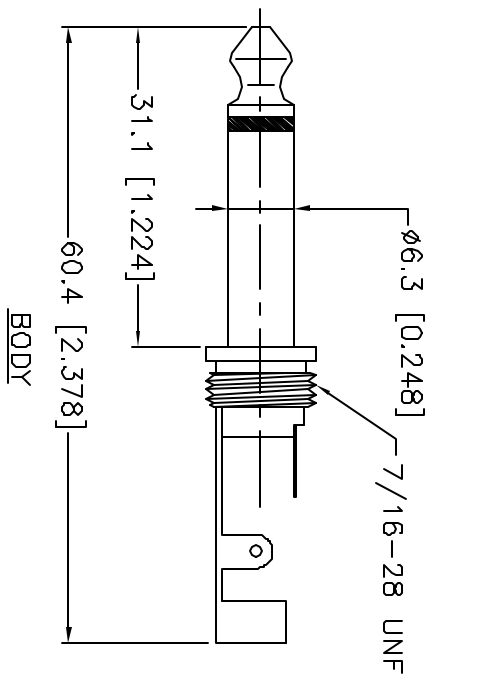


ALL RIGHTS RESERVED. NO PORTION OF THIS PUBLICATION, WHETHER IN WHOLE OR IN PART
CAN BE REPRODUCED WITHOUT THE EXPRESS WRITTEN CONSENT OF SPC TECHNOLOGY.

REVISIONS			DOC. NO. SPC-F005 * Effective: 12/21/98 * DCP No. 860					
DCP #	REV	DESCRIPTION	DRAWN	DATE	CHECKD	DATE	APPRVD	DATE
	B	Revised & Redrawn					JL	1/6/93
522	C	Revised & Redrawn	JWM	2/1/99	JC	11/30/00	JC	11/30/00

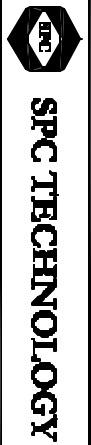


HANDLE

ASSEMBLY

- Material:
1. Plug Body: Brass, Nickel-Plated
 2. Terminals: Brass, Nickel-Plated
 3. Insulator: Delrin
 4. Insulation Tube: PVC
 5. Handle: Brass, Nickel-plated

DISCLAIMER
ALL STATEMENTS AND TECHNICAL INFORMATION CONTAINED HEREIN ARE BASED UPON INFORMATION
AND/OR TESTS WE BELIEVE TO BE ACCURATE AND RELIABLE. SINCE CONDITIONS OF USE ARE
BEYOND OUR CONTROL, THE USER SHALL DETERMINE THE SUITABILITY OF THE PRODUCT FOR THE
INTENDED USE AND ASSUME ALL RISK AND LIABILITY WHATSOEVER IN CONNECTION THEREWITH.



DRAWING TITLE:				DRAWING NO.				ELECTRONIC FILE				REV			
6.3mm Two Conductor Phone Plug, Metal Handle				301-M				44N933.dwg				C			
Tolerances Unless Otherwise Specified: .X=±0.2 [.008] .XX=±0.12 [.005]				DATE: 1/6/93				DATE: 1/7/93				DATE: 1/8/93			
DRAWN BY: JL				CHECKED BY: JC				APPROVED BY: JL				SCALE: NTS			
U.O.M.: Millimeters [Inches]				SHEET: 1				OF 1							