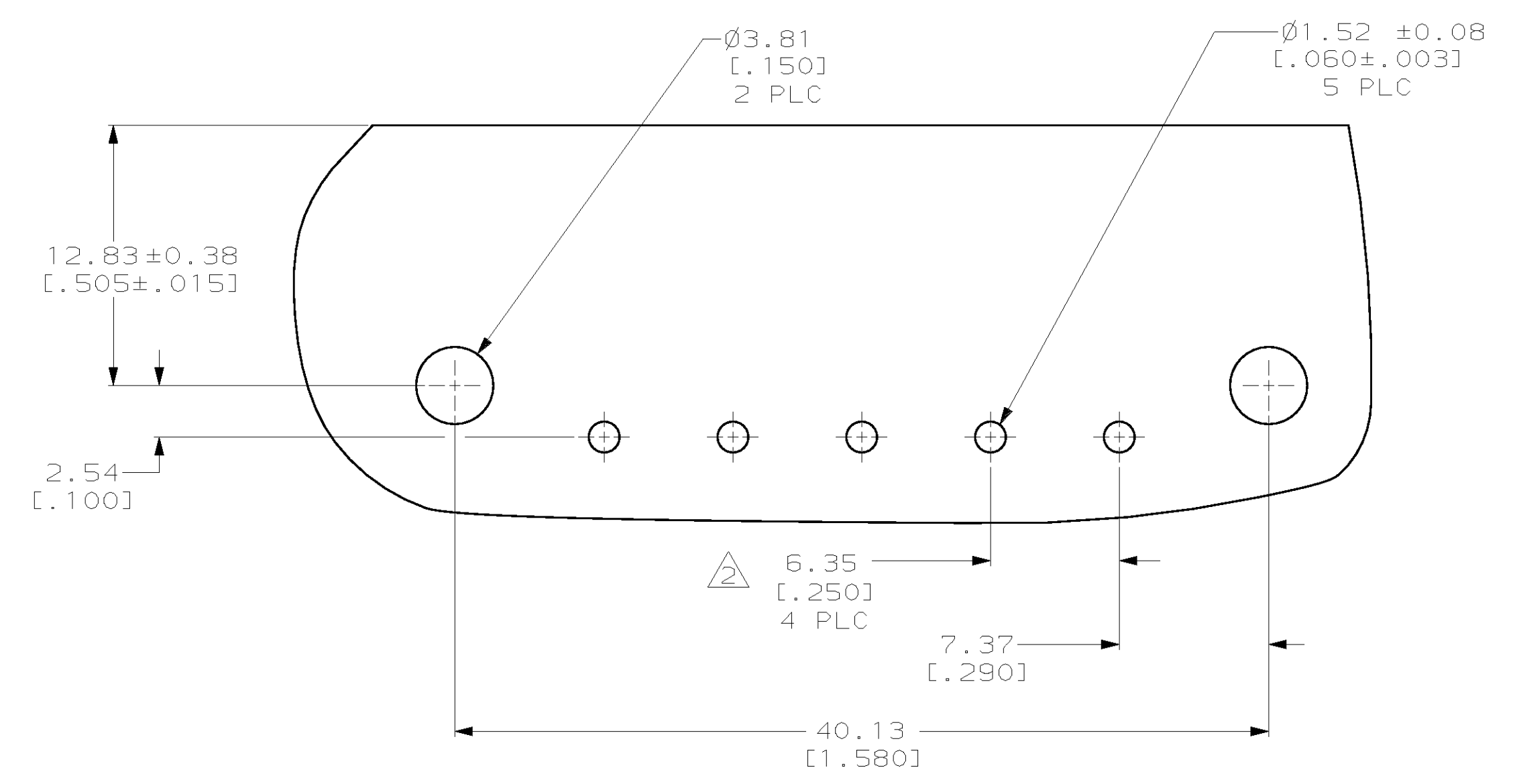
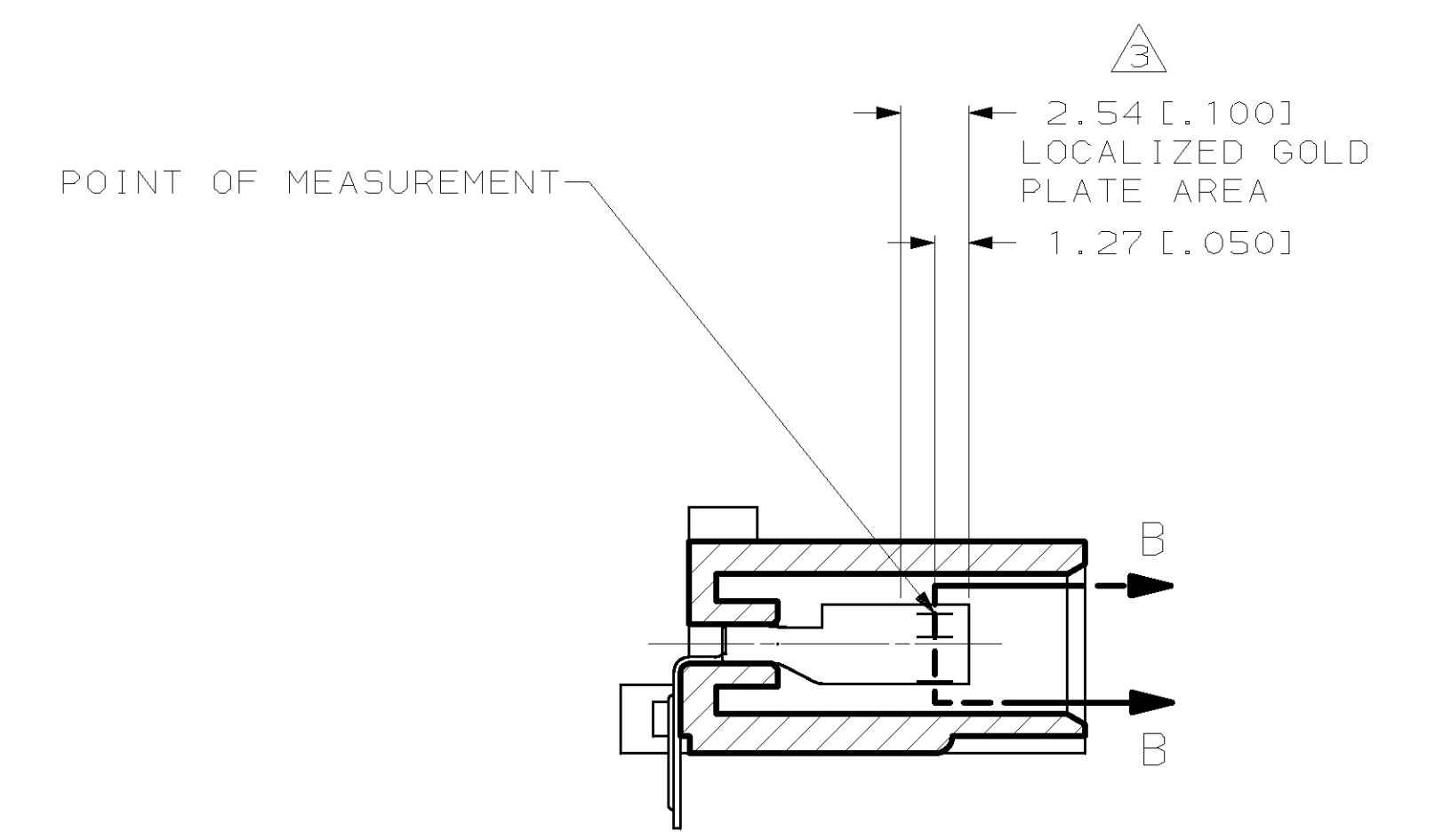
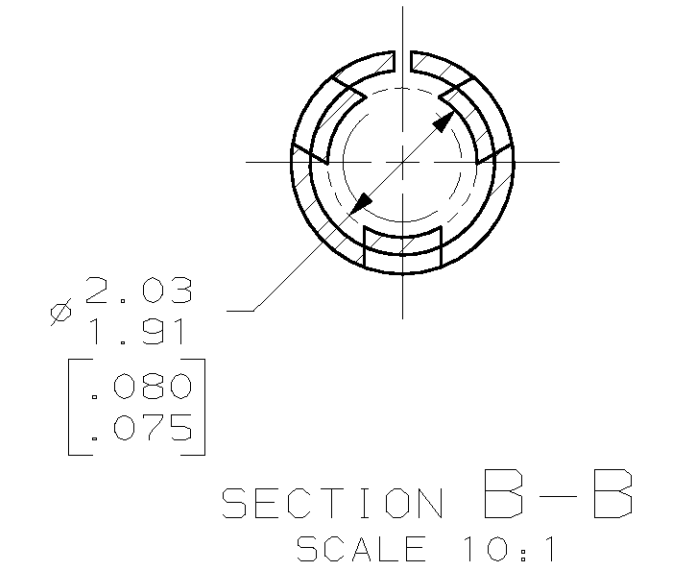
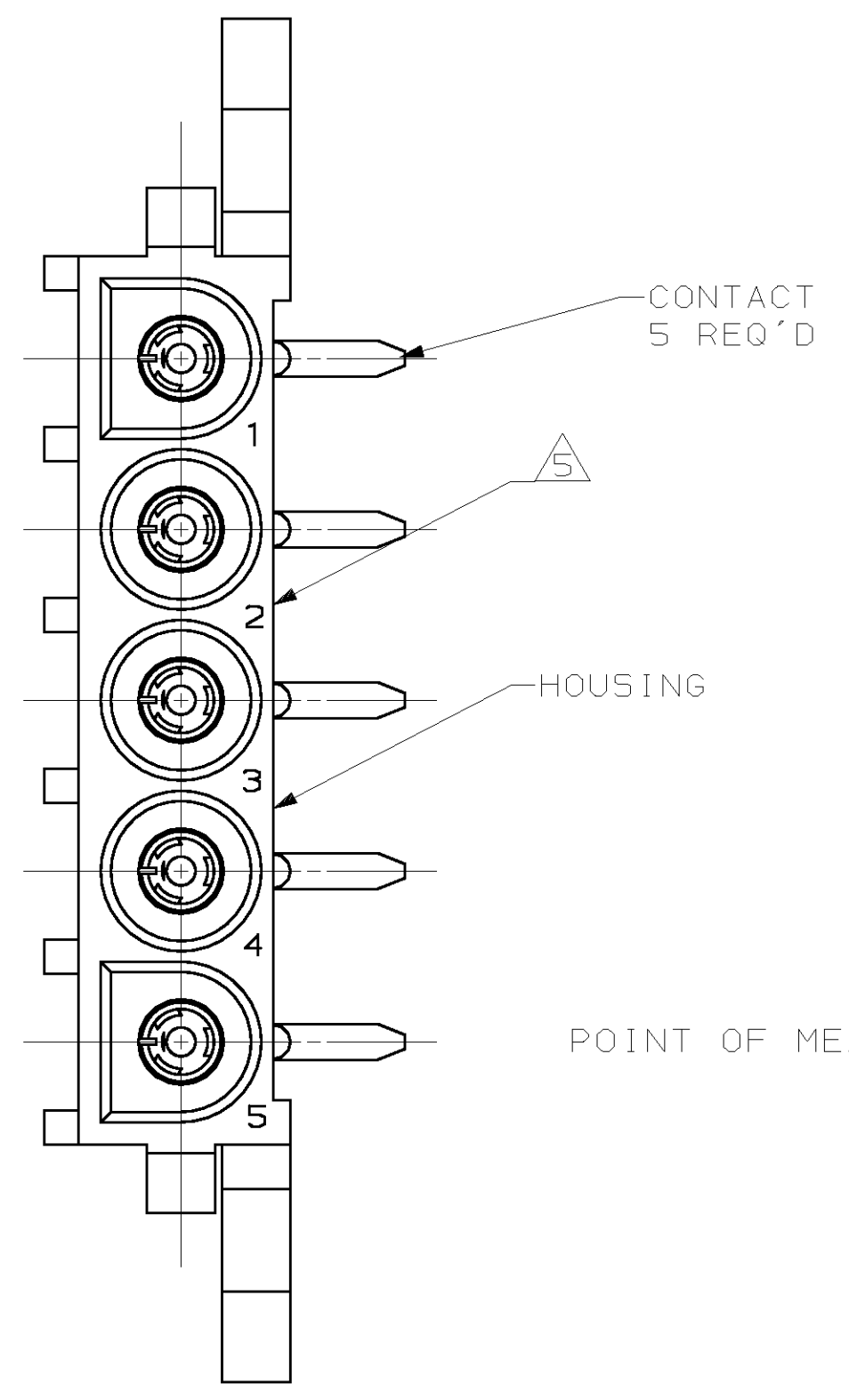
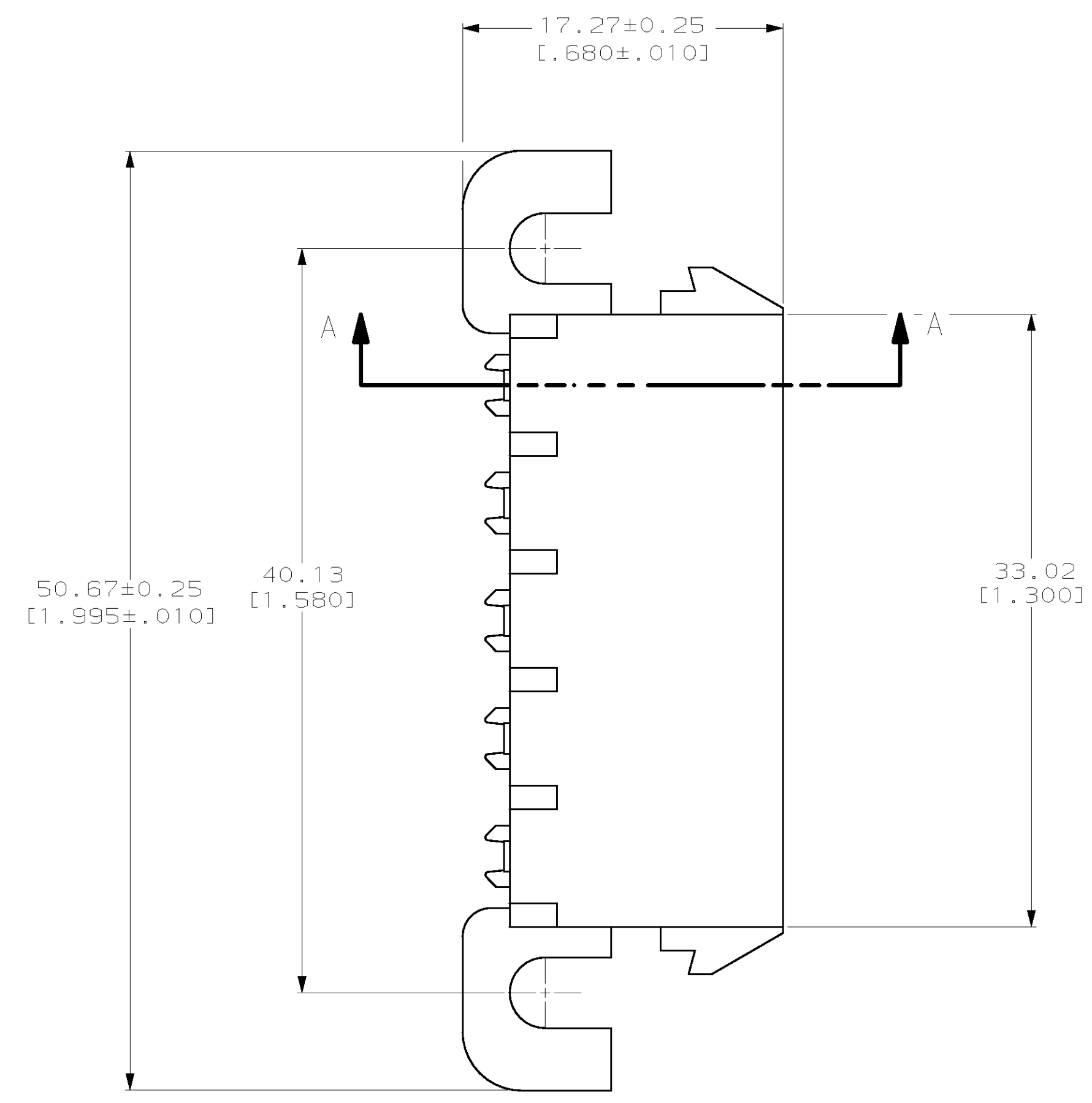
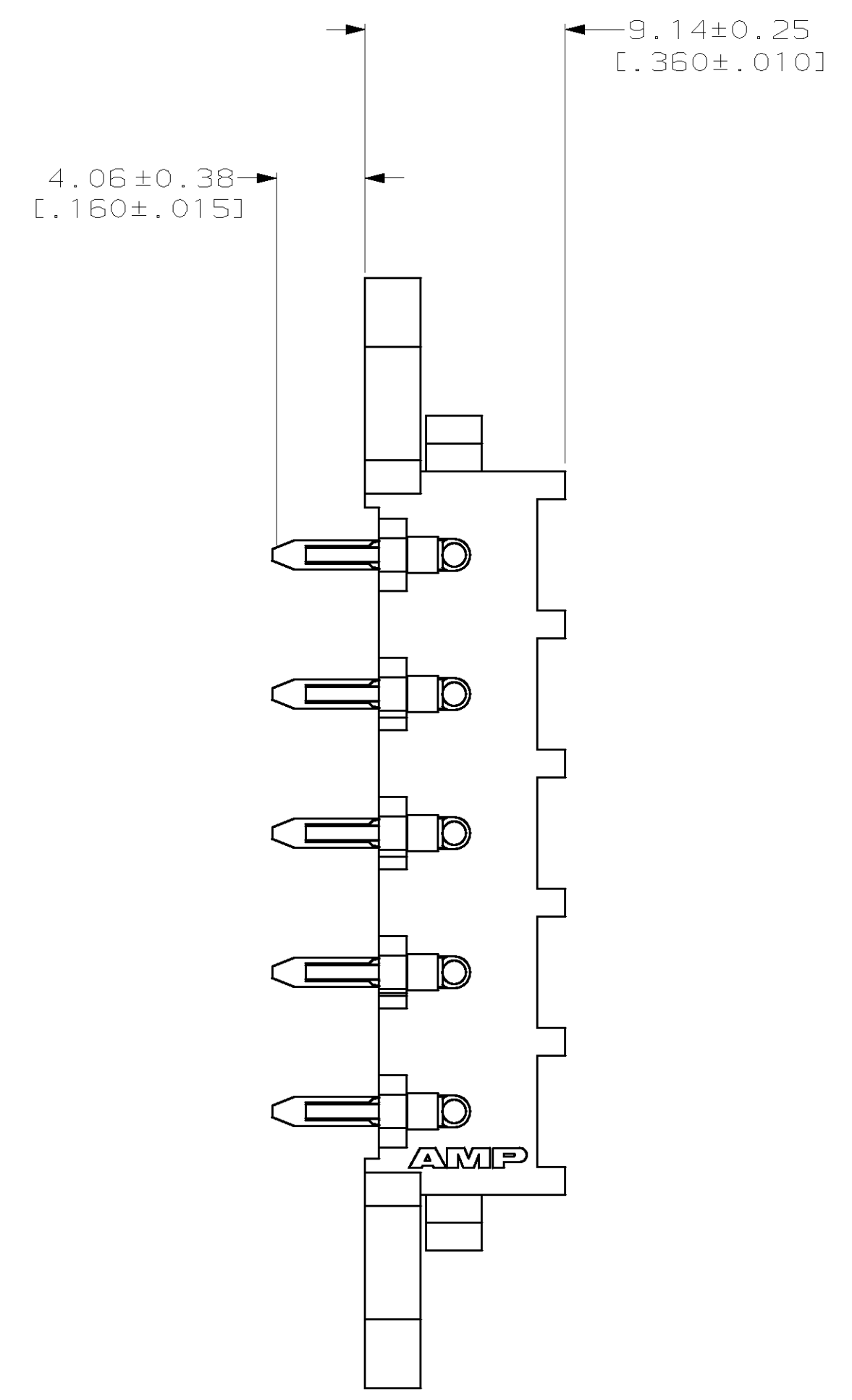
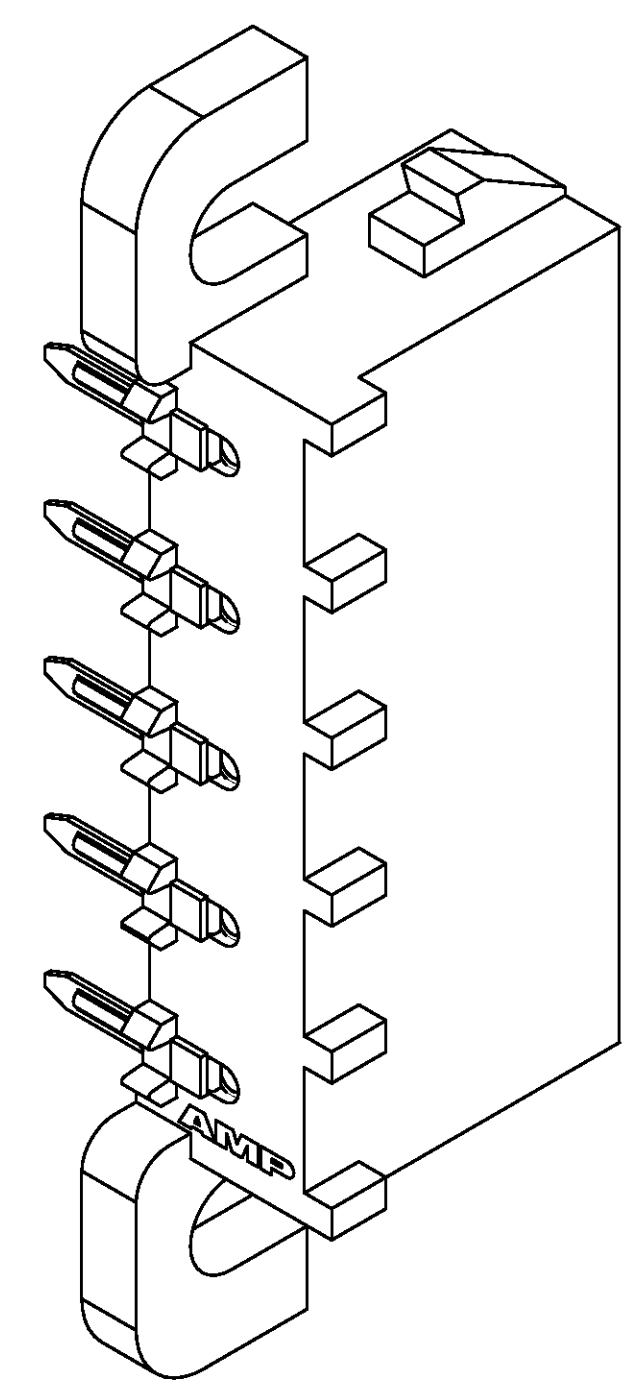


REV. LIST		REVISIONS			
NO.	DATE	DESCRIPTION	DATE	BY	APPV
CM	53	REV & REDWN PER EC 0G1B-0126-98	4-30-98	BL	RS

- PARTS COMPLY WITH AMP SOLDERABILITY SPECIFICATION 109-11-5.
- TOLERANCE NON-CUMULATIVE.
- 0.00075 [.000030] GOLD OVER 0.00127 [.000050] MIN NICKEL WITH MATTE TIN ON SOLDER TAIL.
- DIMENSIONS IN BRACKETS ARE IN INCHES.
- CIRCUIT IDENTIFICATION CHARACTERS ARE ADJACENT TO THE INDICATED CAVITIES, BUT LOCATION AND ORIENTATION MAY DIFFER FROM PRINT.



RECOMMENDED MOUNTING HOLE PATTERN FOR .062 [1.57] THICK P.C. BOARD



**METRIC**

PH BRZ GOLD, $\Delta$	NYLON UL 94V-0	643232-2
PH BRZ PRE-TIN	NYLON UL 94V-0	643232-1
CONTACT	HOUSING	PART NUMBER

DIMENSIONS:		TOLERANCES UNLESS OTHERWISE SPECIFIED:		MATERIAL:		FINISH:		DRAWING NO.		CAGE CODE		SCALE	
mm	PLC	±	PLC	SEE TABLE	SEE TABLE	SEE TABLE	SEE TABLE	A1	00779	C-643232	4:1	1	1
DIMENSIONS:		TOLERANCES UNLESS OTHERWISE SPECIFIED:		MATERIAL:		FINISH:		DRAWING NO.		CAGE CODE		SCALE	
mm	PLC	±	PLC	SEE TABLE	SEE TABLE	SEE TABLE	SEE TABLE	A1	00779	C-643232	4:1	1	1
DIMENSIONS:		TOLERANCES UNLESS OTHERWISE SPECIFIED:		MATERIAL:		FINISH:		DRAWING NO.		CAGE CODE		SCALE	
mm	PLC	±	PLC	SEE TABLE	SEE TABLE	SEE TABLE	SEE TABLE	A1	00779	C-643232	4:1	1	1

**AMP** AMP Incorporated Harrisburg, PA 17105-3608

SOCKET HEADER ASSEMBLY, RIGHT ANGLE MOUNT, 5 POSITION, UNIVERSAL MATE-N-LOK™

SIZE: A1 CAGE CODE: 00779 DRAWING NO: C-643232

CUSTOMER DRAWING SCALE: 4:1 SHEET 1 OF 1 REV C