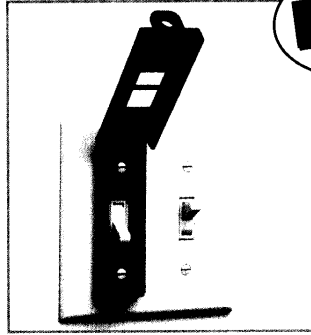
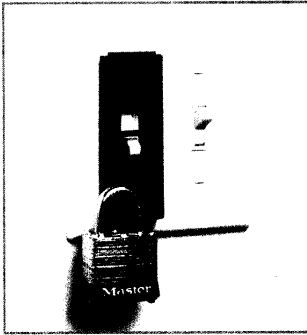


For price information, refer to the enclosed pricelist

# Safety while handling Electrical Equipment

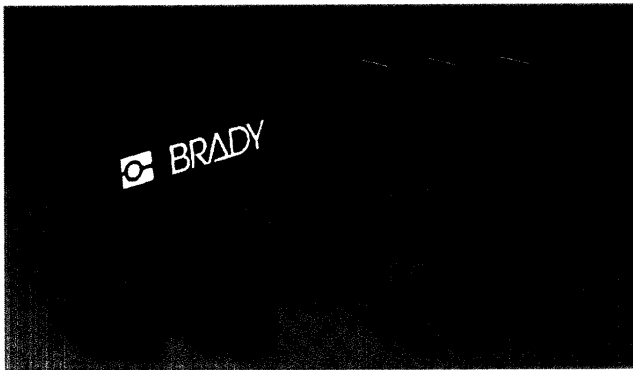


**NEW**

## Wall Switch Lockout

Easy to install device can be used with most wall mounted switches. Can be used to lock switch in either on or off position. Install using existing screws.

Part No.	Qty
065392	1/pkg
065696	6/pkg



## Breaker Lockout Pouch

**NEW**

Part No.: 065405

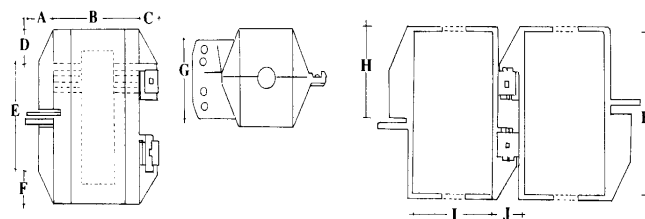
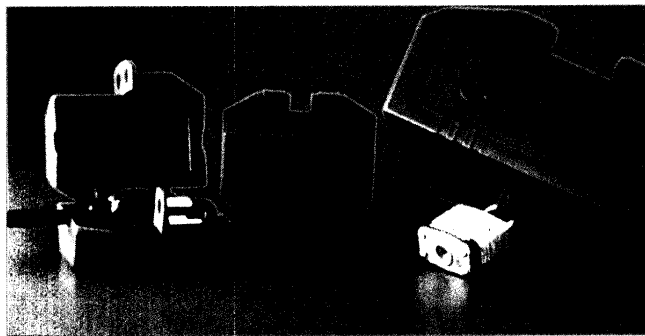
Pouch contains: 1 pouch; 1 small Brady plug lockout; 3 wall switch lockouts, 3 universal multi-pole lockouts, 3x277 volt "No Hole" lockouts, 2x480/600 volt "No Hole" lockouts; 1 cleat 277 general use; 1 cleat 480/600 general use.

## Lockout Devices for Plug Connections

Especially developed to secure all types of plugs, simple to use and highly effective against the unauthorised or incorrect use of electrical equipment.

Packaging: 1 piece

Size in mm	Part n°
50 x 50 x 90	065674
80 x 80 x 180	065675

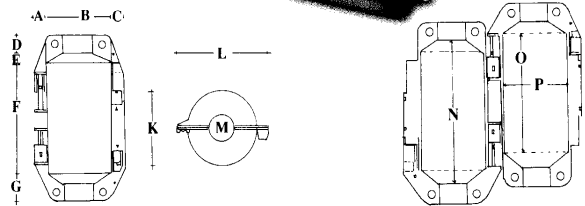
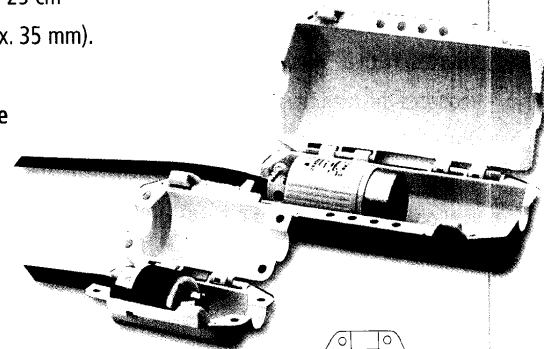


Part N°	Size in mm										
	A	B	C	D	E	F	G	H	I	J	K
065674	18	50	12	18	52	18	42	45	43	15	81
065675	25	90	16	40	97	40	70	85	76	25	167

## Lockout Devices for industrial Plug Connections

With just two different sizes, almost all industrial plug connections can be secured effectively against unauthorised persons. The smaller version can be used for connections up to a maximum diameter of 7 cm and a length of 12 cm (cable diameter max. 25 mm), whereas the larger version can be used for connections with a maximum diameter of 11.5 cm and a maximum length of 25 cm (cable diameter max. 35 mm).

Packaging: 1 piece



Type	Diameter	Length	Cable diameter	Part N°
Small	7 cm	12 cm	25 mm	065695
Large	11 cm	25 cm	35 mm	065968

Part N°	Size in mm															
	A	B	C	D	E	F	G	H	I	J	K	L	M	N	O	P
065695	15	76	15	20	10	125	30	20	36	20	80	106	30	145	120	70
065968	-	-	-	15	-	285	15	18	125	18	120	120	-	286	290	120