

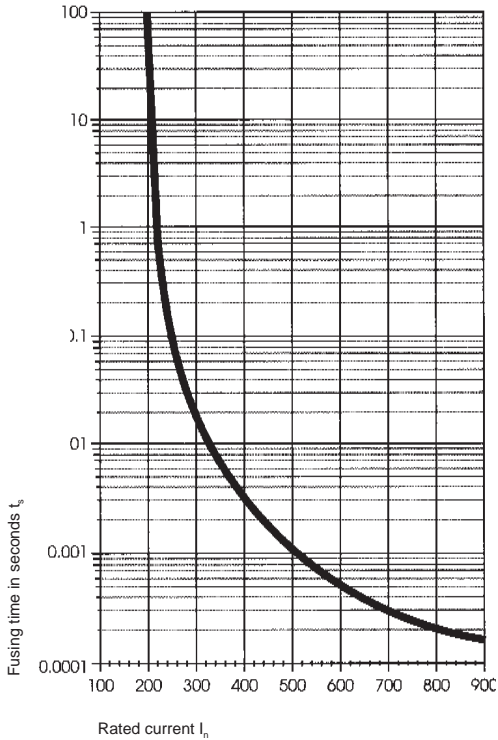
MGA 125V 125V Quick-acting Surface Mount Fuse



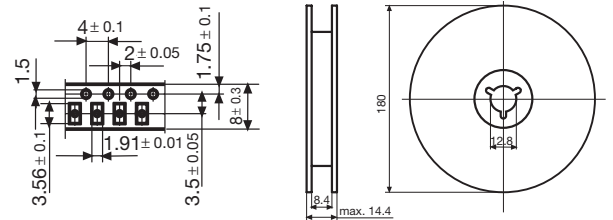
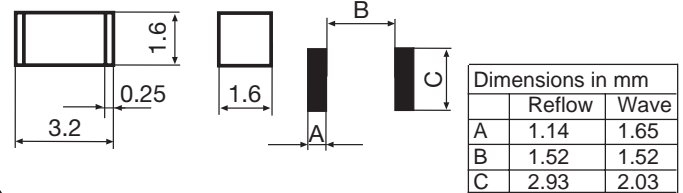
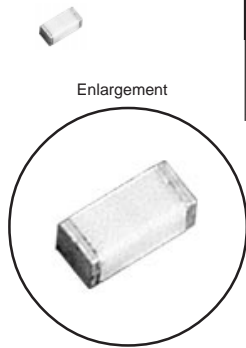
Built according to EIASOCM-3216 (equivalent to 1206), UL 248-14

Approvals:

c-UL-us recognition 100mA-3A/125V File #E41599
 4A/ 63V
 5A/ 32V



NEW



- "Flip chip" design mounts on any side
- Lowest resistance
- Quick-acting
- Hermetically sealed for operating temperatures in excess of 150°C
- Low energy let-through
- Superior cycling

Time Current Characteristics

$n \cdot I_n$	I_n	$2.5 \cdot I_n$
rated current I_n	≥ 4 h	≤ 5 s
200mA – 5A		

Technical Data

Rated current	see chart
Time current characteristic	quick-acting
Breaking capacity	50A AC / DC
Ambient temperature max.	Tu -40°C / to +125°C
Climatic category	50/ 150/ 21 acc. to IEC 60068
Solderability	reflow and wave: 245°C / 5 sec. acc. to EIA-722, 4.8
Material: Housing	ceramic
Terminals	copper alloy, tin plated
Packaging	8mm tape and reel per EIA-RS481 (equivalent to IEC 286-3)

Order Numbers – Standard	Rated current / voltage mA / A / V ~	Breaking capacity A ~ ac / dc cos phi 1	Voltage drop at I_n typical mV	Power dissipation at $1.5 \cdot I_n$ typical mV	Pre-arcing I^2t at $4 \cdot I_n$ typical A ² s	Packaging Order No. Suffix
3410.0021.XX	200 mA / 125V	50A / 125V	202	40	0.0013	100 pieces taped & bagged: .XX = .01
3410.0022.XX	250 mA / 125V	50A / 125V	176	44	0.0034	
3410.0025.XX	375 mA / 125V	50A / 125V	140	52	0.0037	
3410.0027.XX	500 mA / 125V	50A / 125V	126	68	0.0067	750 pieces taped & reeled: .XX = .02
3410.0029.XX	750 mA / 125V	50A / 125V	118	88	0.015	
3410.0031.XX	1 A / 125V	50A / 125V	114	114	0.043	3,000 pieces taped & reeled: .XX = .03
3410.0033.XX	1.5 A / 125V	50A / 125V	123	185	0.12	
3410.0035.XX	2 A / 125V	50A / 125V	117	234	0.20	
3410.0036.XX	2.5 A / 125V	50A / 125V	115	288	0.54	10,000 pieces taped & reeled: .XX = .04
3410.0037.XX	3 A / 125V	50A / 125V	112	336	0.34	
3410.0240.XX	4 A / 63V	50A / 63V	110	440	0.76	
3410.0141.XX	5 A / 32V	50A / 32V	90	450	1.04	