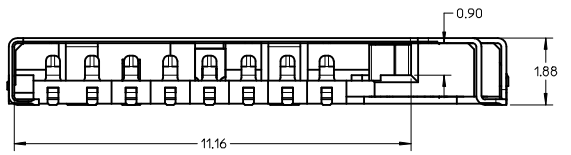
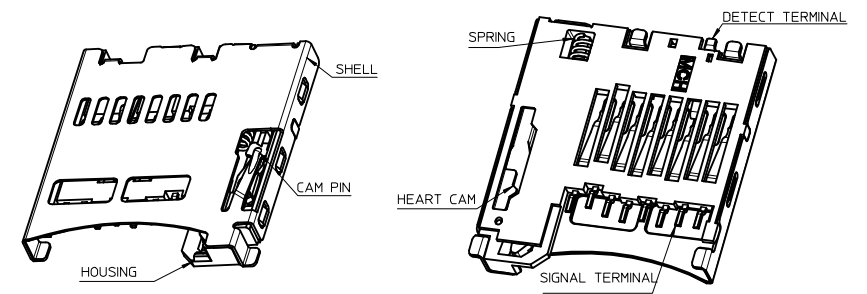
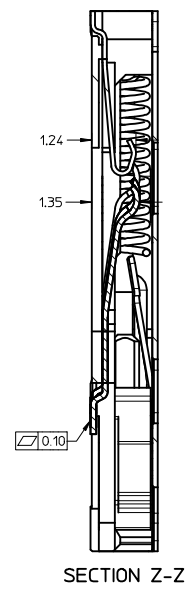
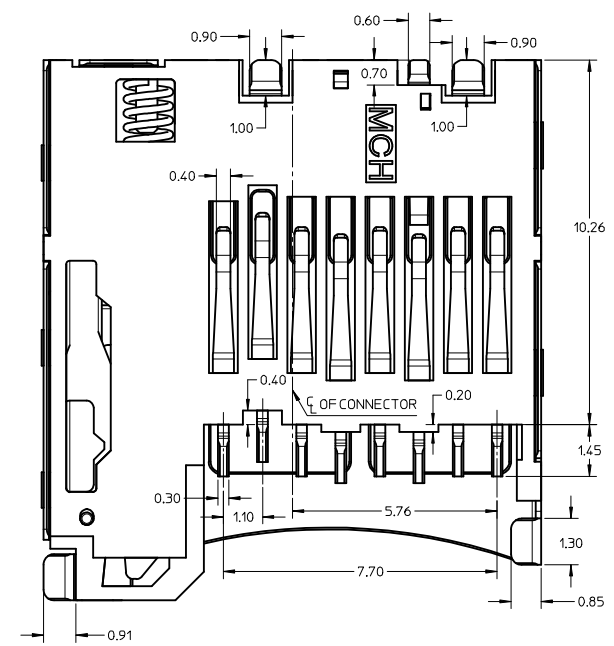
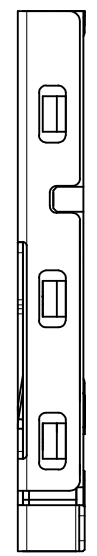
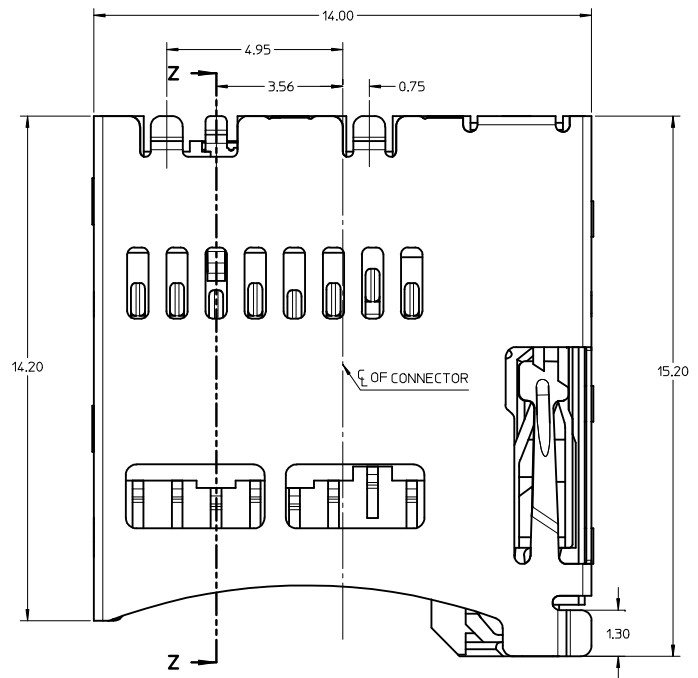
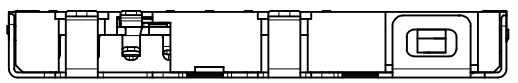
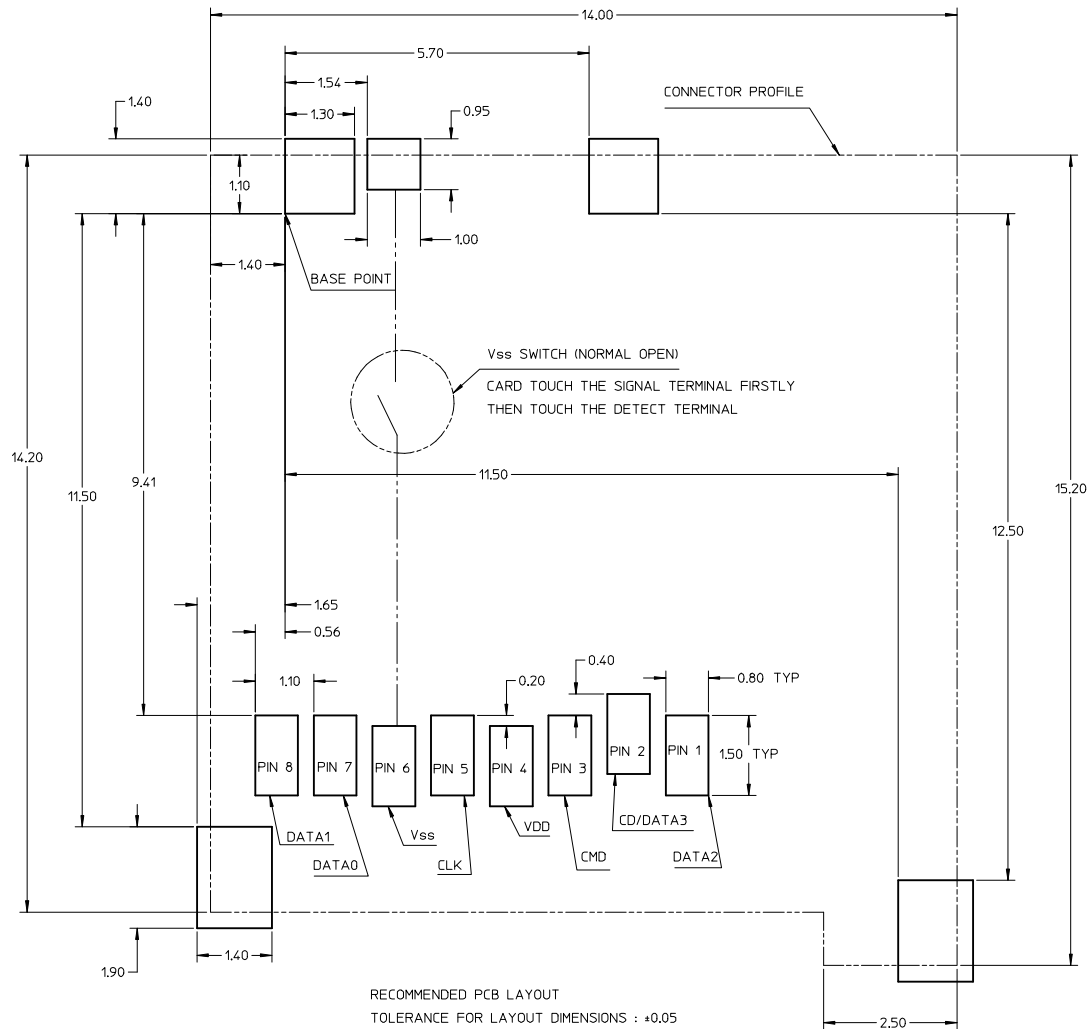
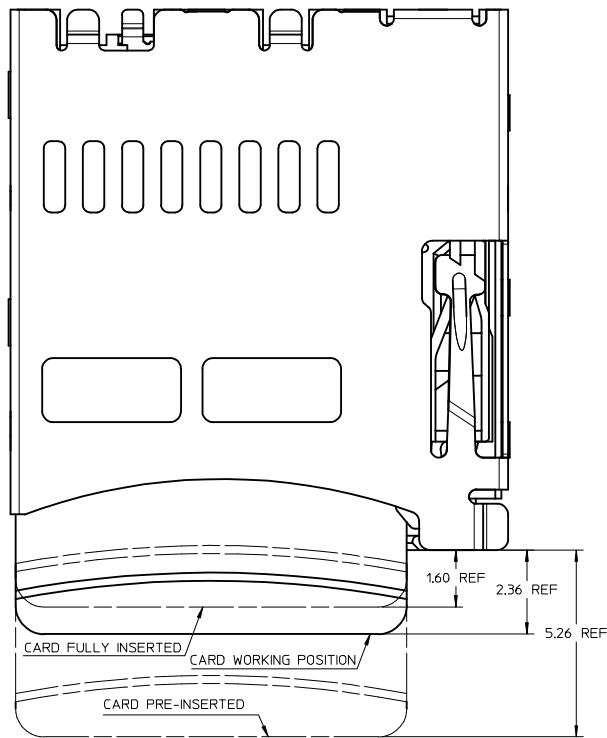


13 12 11 10 9 8 7 6 5 4 3 2 1



REVISE EC NO: SHZ008-0541 DRAWN: XJ SONG 2009/03/13 CHKD: XJ SONG 2009/03/18 APPR: HWANG 2009/05/07	DESCRIPTION TFR&MICRO SD CARD READER PUSH PUSH TYPE VSS DETECT SWITCH	QUALITY SYMBOLS ▽=0 ▽=0		GENERAL TOLERANCES (UNLESS SPECIFIED) mm INCH		DIMENSION STYLE MM ONLY		SCALE 10:1	DESIGN UNITS METRIC	THIRD ANGLE PROJECTION		
		4 PLACES ± --- ± ---	3 PLACES ± --- ± ---	2 PLACES ± 0.15 ± ---	1 PLACE ± --- ± ---	ANGULAR ± 1/2°	DRAWN BY XU XIANG	DATE 2005-11-14	TITLE TFR&MICRO SD CARD READER PUSH PUSH TYPE VSS DETECT SWITCH			
		DRAFT WHERE APPLICABLE MUST REMAIN WITHIN DIMENSIONS					CHECKED BY XU XIANG	DATE 2006-06-22	MOLEX INCORPORATED			
							APPROVED BY YJWU	DATE 2006-06-22	MATERIAL NO. 473521001	DOCUMENT NO. SD-47352-101	SHEET NO. 1 OF 2	

12 11 10 9 8 7 6 5 4 3 2 1



RECOMMENDED PCB LAYOUT
TOLERANCE FOR LAYOUT DIMENSIONS : ±0.05

- NOTES:
- MATERIAL:
 - 1-1 SIGNAL TERMINAL, DETECT TERMINAL : COPPER ALLOY
 - 1-2 SHELL, CAM PIN, SPRING : STAINLESS STEEL
 - 1-3 HOUSING, CAM : LCP, UL 94-V0, BLACK
 - FINISH:
 - 2-1 SIGNAL & DETECT TERMINAL : NICKEL UNDERPLATED, GOLD PLATING ON CONTACT AREA TIN PLATING ON SOLDER TAIL
 - 2-2 SHELL : GOLD FLASH OVER NICKEL UNDERPLATED ON SOLDER PAD
 - MECHANICAL SPECIFICATION:
 - REPEATED 5,000 TIMES MATING AND UNMATING CYCLES AND STILL MEET ELECTRICAL CHARACTERISTICS
 - ELECTRICAL SPECIFICATION:
 - 4-1 RATED CURRENT (PER CONTACT) : 0.5AMPS MAX AND TEMPERATURE RISE SHOULD BE 30°C MAX
 - 4-2 INSULATION RESISTANCE(IR) : 100 MEGOHMS MIN.
 - 4-3 DIELECTRIC WITHSTANDING VOLTAGE : 500 VAC
 - 4-4 CONTACT RESISTANCE: 100 MILLIOHMS MAX

SEE SHEET1 EC NO: SHZ008-0541 DRAWN: XJ SONG 2009/03/13 CHKD: XJ SONG 2009/03/18 APPR: HWANG 2009/05/07	QUALITY SYMBOLS ▽=0 ▽=0	GENERAL TOLERANCES (UNLESS SPECIFIED)		DIMENSION STYLE MM ONLY		SCALE 10:1	DESIGN UNITS METRIC	THIRD ANGLE PROJECTION
		4 PLACES ± --- ± ---	mm INCH	DRAWN BY XU XIANG	DATE 2005-11-14	TITLE TFR&MICRO SD CARD READER PUSH PUSH TYPE VSS DETECT SWITCH		
		3 PLACES ± --- ± ---		CHECKED BY XU XIANG	DATE 2006-06-22	MOLEX INCORPORATED		
		2 PLACES ± 0.15 ± ---		APPROVED BY YJWU	DATE 2006-06-22	MATERIAL NO. 473521001	DOCUMENT NO. SD-47352-101	
		1 PLACE ± --- ± ---		ANGULAR ± 1/2°				SHEET NO. 2 OF 2
		DRAFT WHERE APPLICABLE MUST REMAIN WITHIN DIMENSIONS		THIS DRAWING CONTAINS INFORMATION THAT IS PROPRIETARY TO MOLEX INCORPORATED AND SHOULD NOT BE USED WITHOUT WRITTEN PERMISSION				