

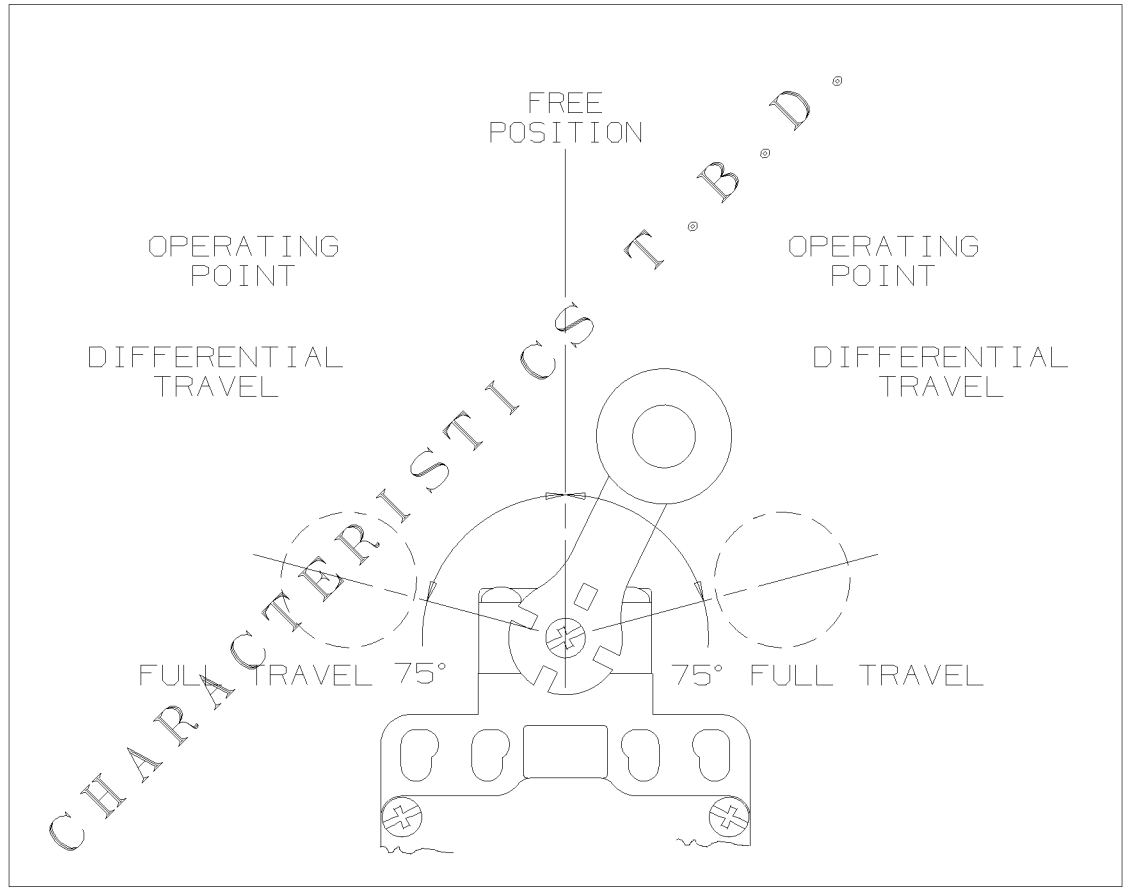
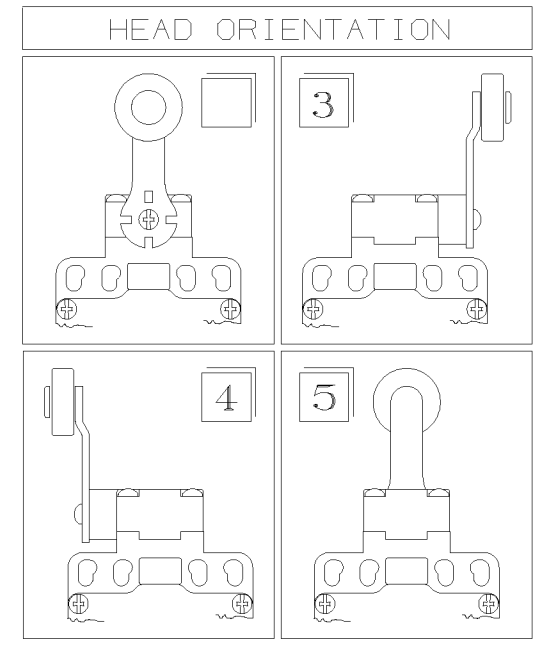
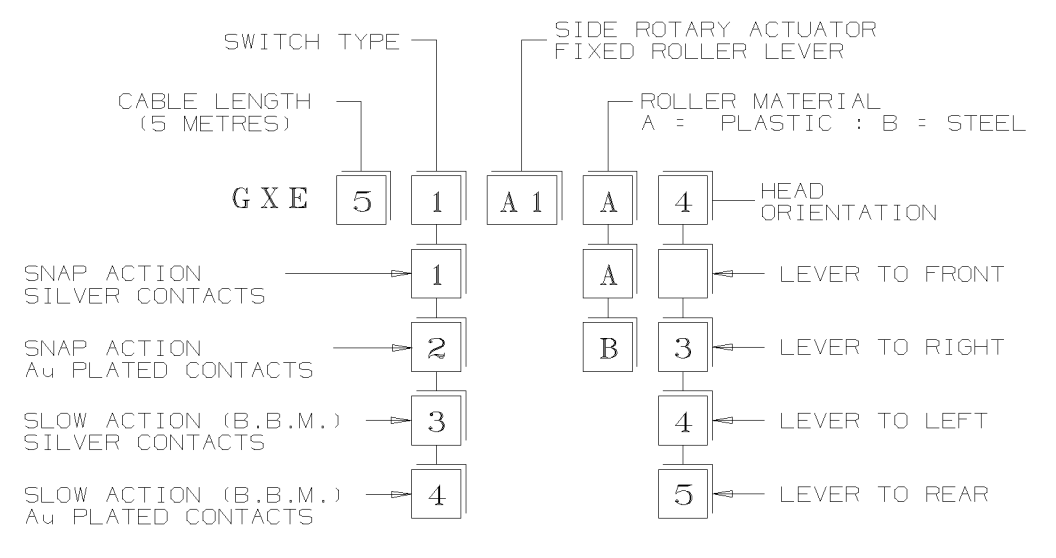
DO NOT SCALE PRINT
 A2 FORMAT
 MTG - GX - 297
 REPLACES
 DRAWING NUMBER PR*788
 ISSUE 1
 RELEASE No.
 REVISIONS
 6/00
 I. WEIR
 CHECK
 DESIGN
 AUTHOR*YN

Honeywell

LIMIT SWITCH

CATALOGUE LISTING CHART No.
 MTG - GX - 297

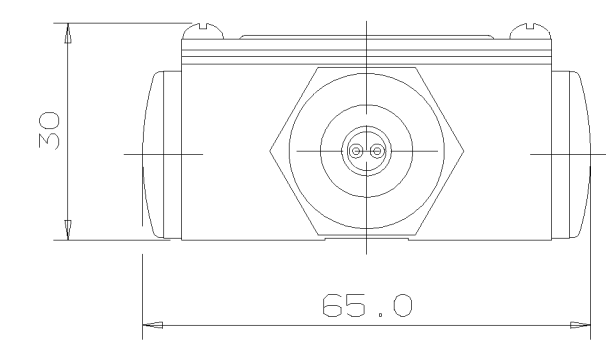
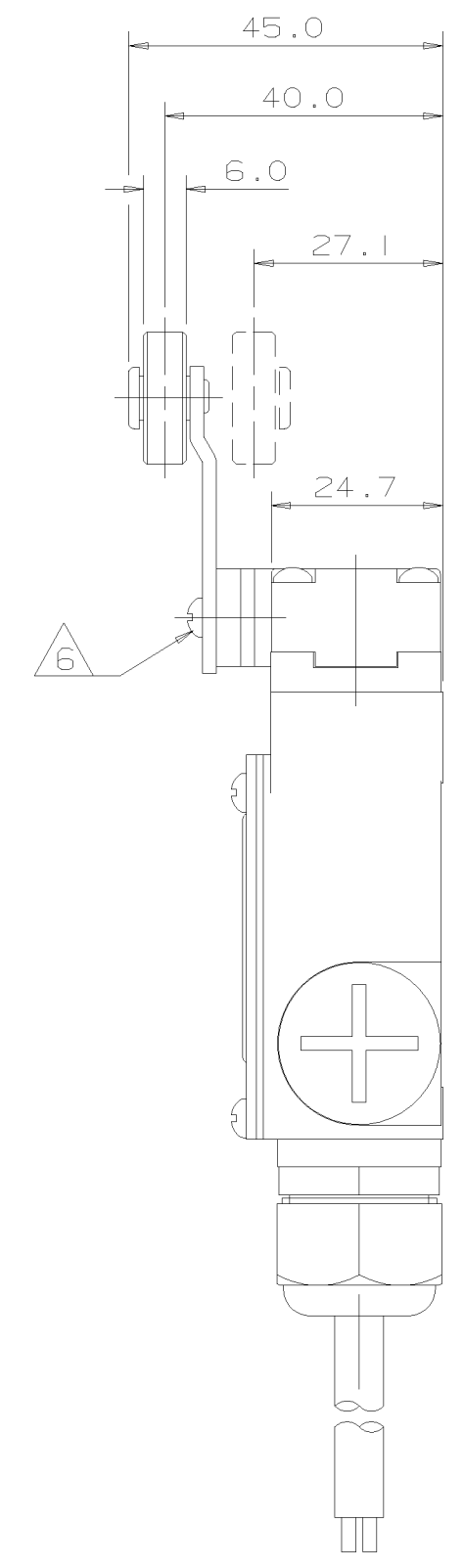
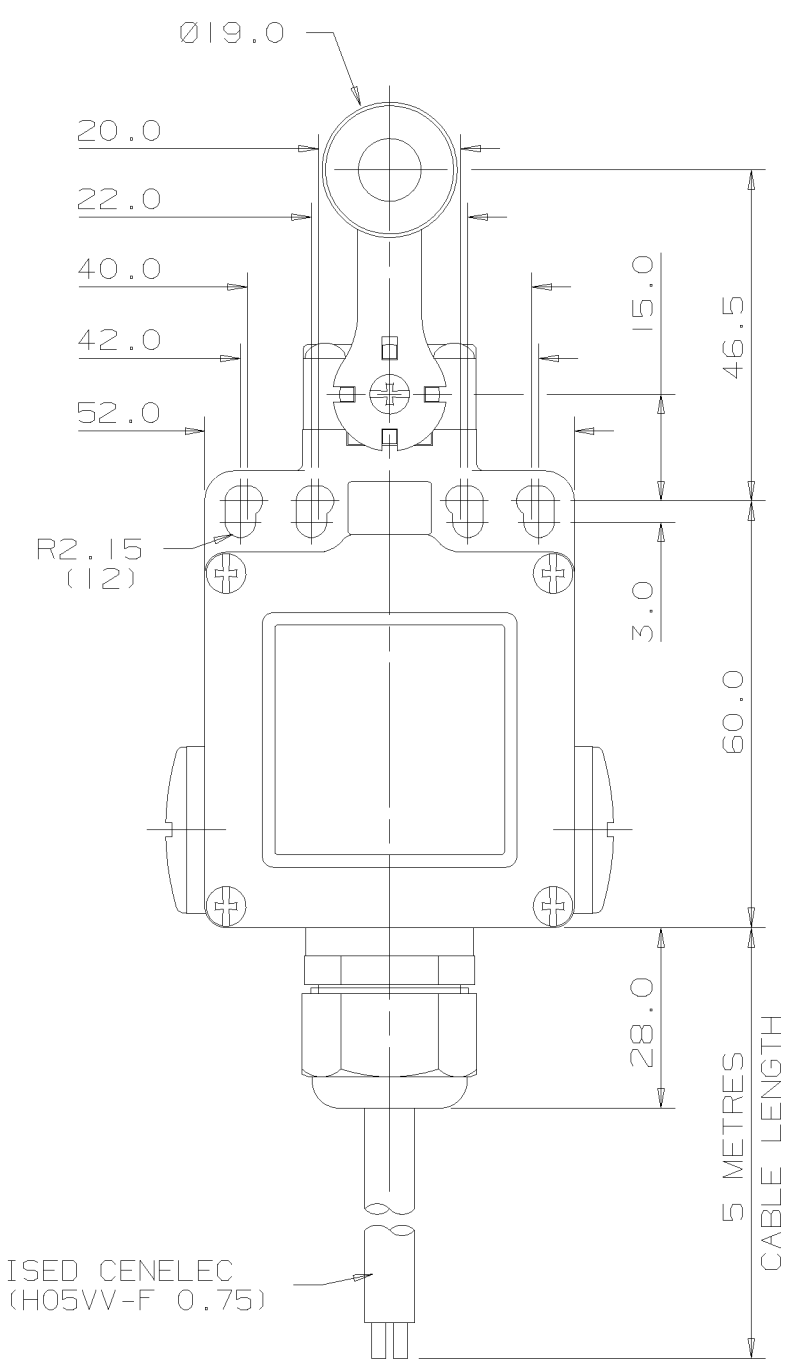
* KEMA APPROVED PART *
 NO CHANGE TO DRAWING
 WITHOUT THE JOINT AGREEMENT OF
 APPROVALS/DESIGN/MARKETING



MIN. OPERATING VELOCITY = 2.0mm/S (.08in/S)
 MAX. OPERATING VELOCITY = 200mm/S (7.9in/S)
 MAX. OPERATING FREQUENCY = 250 OPS/MINUTE

ENVIRONMENTAL	CIRCUIT DIAGRAM
IP66/67	SWITCH TYPES 1 & 2
TEMP RANGE : -20°C TO 75°C OPERATING -4°F TO 167°F AND STORAGE	BLUE — BROWN BLACK
SHOCK : 50G PER IEC 68-2-27 VIBRATION : 10G PER IEC 68-2-6	SWITCH TYPES 3 & 4
	BLUE — BROWN

ELECTRICAL RATING		CHARACTERISTICS	APPROVALS
SILVER CONTACTS	GOLD CONTACTS	OPERATING FORCE $\frac{16\text{ N}}{3.6\text{ lbf}}$ MAX	CE 0527
AC-15 4A 250V		RELEASE FORCE $\frac{4.4\text{ N}}{450\text{ g}}$ MIN	EN50014 EN50018
AC-15 2A 400V			
DC-13 0.15A 250V			



NOTES:-

1. BLUE EPOXY PAINT FINISHED ZINC DIE-CAST BODY AND STEEL COVER. BLACK EPOXY PAINT FINISHED ZINC DIE-CAST HEAD.
2. APPROVED BY KEMA TO II 2 G EExd IIC T6.
3. KEMA CERTIFICATION REFERENCE:- KEMA 00 ATEX 2103 X.
4. MOUNTING TO EN50047.
5. LEVER MAY BE ATTACHED AND KEYPED TO THE SHAFT AT 10° INCREMENTS.
6. MAXIMUM TIGHTENING TORQUE FOR FIXING SCREW = 0.5Nm.
7. STANDARD LISTINGS CAN HAVE SUFFIX 'RS' OR 'FE'.

THE COPYRIGHT OF THIS DRAWING IS THE PROPERTY OF HONEYWELL LTD. THIS DRAWING IS SUPPLIED IN CONFIDENCE AND MUST NOT BE USED FOR ANY PURPOSE OTHER THAN THAT FOR WHICH IT IS SUPPLIED.

THIRD ANGLE PROJECTION

SCALE:- 1/1

DIMENSIONS ARE IN MILLIMETRES

MODIFY ON CAD SYSTEM ONLY