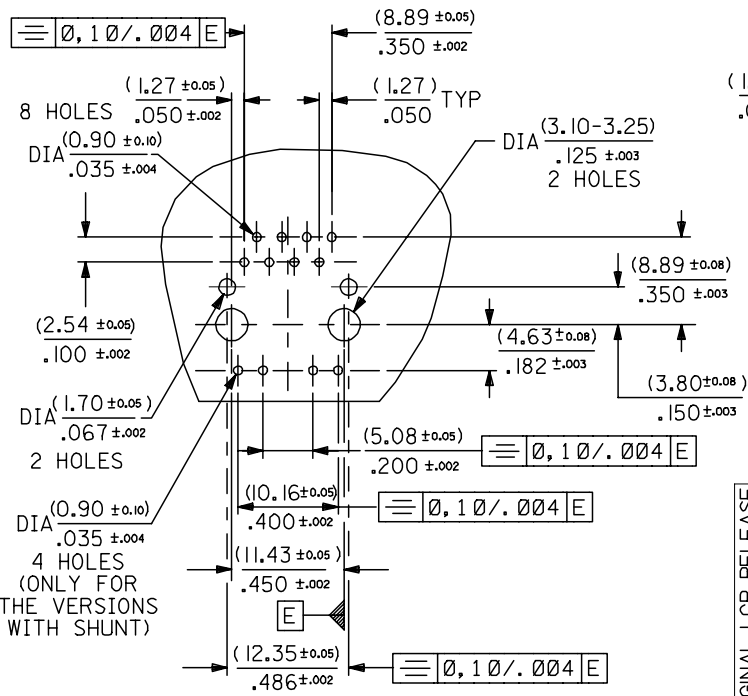
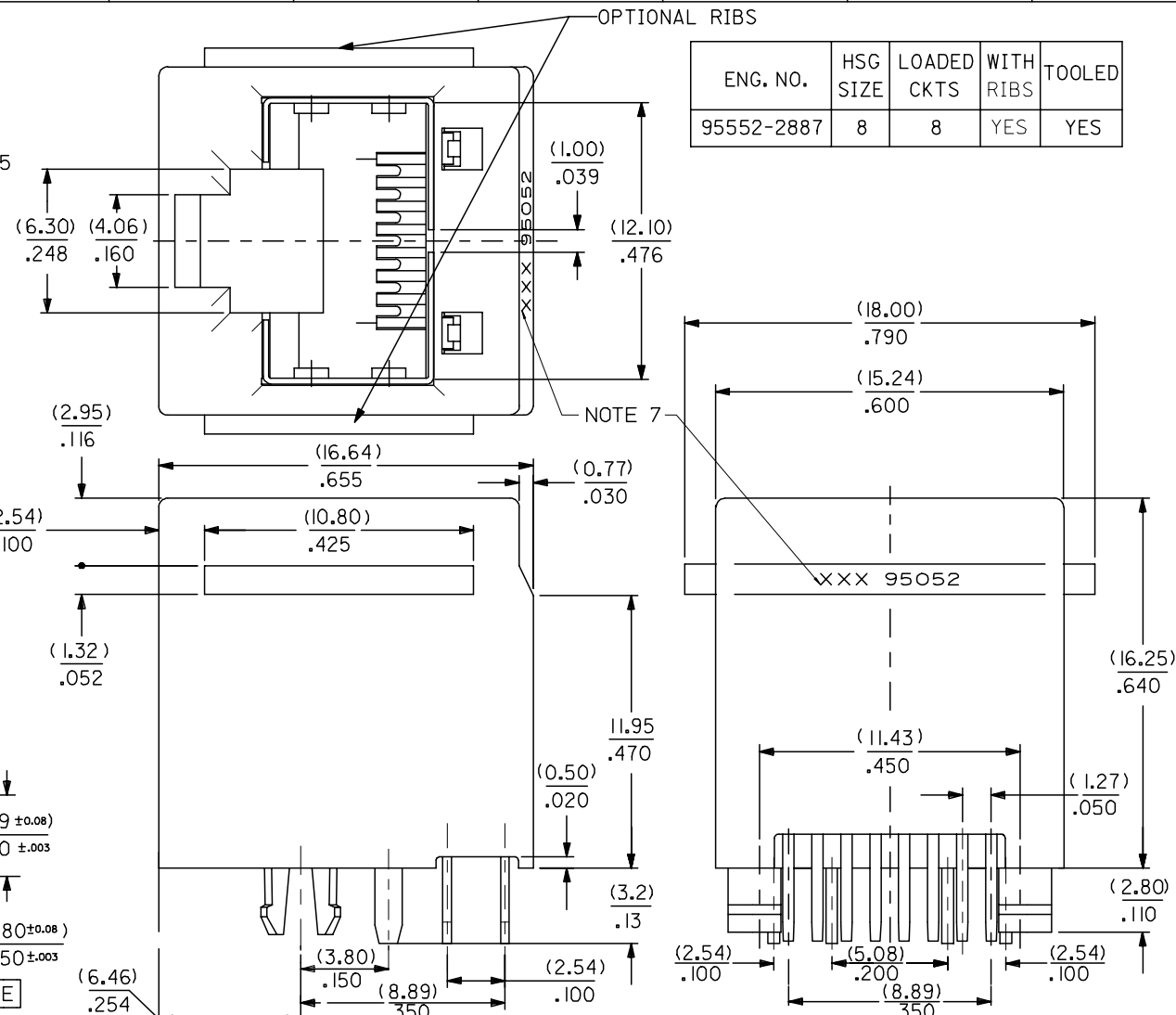


NOTES:

- 1- MATERIAL: HOUSING: LCP GLASS FILLED UL94-V0
COLOUR: BLACK
TERMINAL: BRASS, PLATED WITH (0.00127)/.000050
MIN GOLD IN CONTACT AREA, (0.00190)/.000075
MIN PURE TIN IN TAIL AREA BOTH OVER
(0.00127)/.000050 MIN NICKEL OVERALL
SHIELD: BRASS PLATED WITH (0.0020)/.000078
MIN TIN
- 2- JACK FOR MATING WITH F.C.C. 68 TYPE PLUG
MOLEX 95043 SERIES
- 3- P.C.BOARD THICKNESS: (1.57)/.062
- 4- PRODUCT SPECIFICATION: PS-95540-002
- 5- APPLICATION SPECIFICATION: AS-85513-001
- 6- PACKAGING SPECIFICATION: PK-95022
- 7- MANUFACTURING I.D. CAN BE EITHER MG, MXF OR MXI.

ENG. NO.	HSG SIZE	LOADED CKTS	WITH RIBS	TOOLED
95552-2887	8	8	YES	YES



P.C.B. MOUNTING PATTERNS
(SCALE 2 : 1)

ORIGINAL LCP RELEASE EC NO: E2007-0766 DRAWN: DBYRNES CHKD: APPR: EOMAHONY	QUALITY SYMBOLS ▽=0 ▽=0	GENERAL TOLERANCES (UNLESS SPECIFIED) mm INCH 4 PLACES ± --- ± --- 3 PLACES ± --- ± .010 2 PLACES ± 0.25 ± .014 1 PLACE ± 0.35 ± --- ANGULAR ± 2 °	DIMENSION STYLE MM/IN	SCALE 5:1	DESIGN UNITS METRIC	THIRD ANGLE PROJECTION	
	DRAWN BY DBYRNES	DATE 2007/02/28	CHECKED BY EOMAHONY	DATE 2007/02/28	TITLE TOP ENTRY SHIELDED AND SHUNTED JACK W.E. TYPE		
	APPROVED BY JB	DATE 2007/02/28	MATERIAL NO. SEE CHART		DOCUMENT NO. SD-95552-001		SHEET NO. 1 OF 1
	DRAFT WHERE APPLICABLE MUST REMAIN WITHIN DIMENSIONS						THIS DRAWING CONTAINS INFORMATION THAT IS PROPRIETARY TO MOLEX INCORPORATED AND SHOULD NOT BE USED WITHOUT WRITTEN PERMISSION