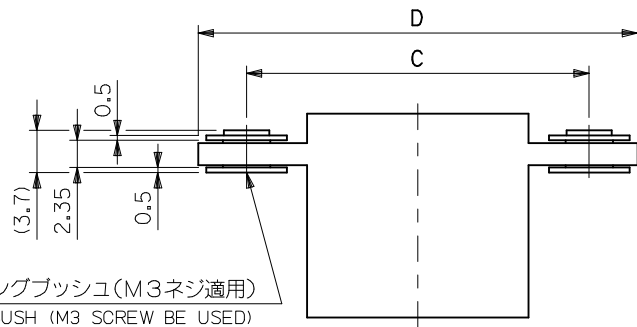
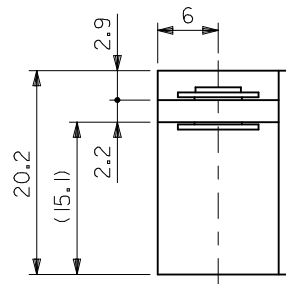


パネル切抜寸法 (参考)  
PANEL CUT OFF DIMENSION (REFERENCE)

回路レイアウト図

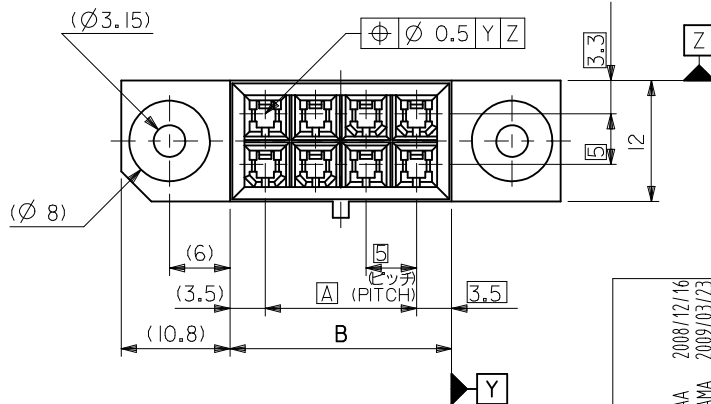
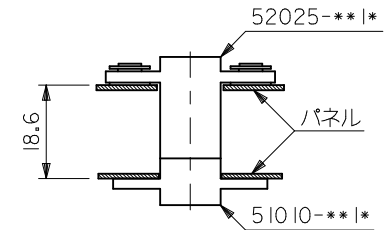


フローティングブッシュ (M3ネジ適用)  
FLOATING BUSH (M3 SCREW BE USED)



注記  
NOTES

- 適用ターミナル : 5558 シリーズ  
APPLICABLE TERMINAL : 5558 SERIES
- 嵌合相手 : 51010-\*\*\*  
MATES WITH : 51010-\*\*\*
- パネル外-外寸法 : 18.6 (下図参照)  
BETWEEN PANEL-PANEL DIMENSION : 18.6 (SEE BELOW FIGURE)



材料  
MATERIAL  
本体 : G.F.15% PBTP, UL94V-0  
HOUSING : G.F.15% PBTP, UL94V-0  
ブッシュ : 黄銅, ニッケルメッキ  
BUSH : BRASS, NICKEL PLATING

REVISED  
EC NO:  
D  
DRWN: KAKURAA 2008/12/16  
CHKD: T. HARUYAMA 2009/03/23  
APPR: T. HARUYAMA 2009/03/24

DESCRIPTION  
GENERAL TOLERANCES (UNLESS SPECIFIED)  
10 UNDER ±0.2  
10 OVER 30 UNDER ±0.25  
30 OVER ±0.3  
ANGULAR ±3 °  
DRAFT WHERE APPLICABLE  
MUST REMAIN WITHIN DIMENSIONS

DIMENSION STYLE  
MM ONLY  
DRAWN BY: T. HIRAMOTO  
DATE: '89/11/24  
CHECKED BY: M. FUKUSHIMA  
DATE: '90/4/5  
APPROVED BY: M. ENOMOTO  
DATE: '90/4/5  
MATERIAL NO.  
SIZE: A3  
THIS DRAWING CONTAINS INFORMATION THAT IS PROPRIETARY TO MOLEX INCORPORATED AND SHOULD NOT BE USED WITHOUT WRITTEN PERMISSION

SCALE: 2:1  
DESIGN UNITS: METRIC  
TITLE: MINI. DRAWER CONN. CRIMP PIN HOUSING ASSY  
MOLEX MOLEX INCORPORATED  
DOCUMENT NO.: SD-52025-001  
SHEET NO.: 1 OF 1

23.2	11	43.6	34	22	15	52025-0811	BLACK	8
13.2	6	33.6	24	12	5	52025-0411		4
F	E	D	C	B	A	MATERIAL NO.	COLOR	極数 CKTS.

MODEL NO. 52025-\*\*\*1\*