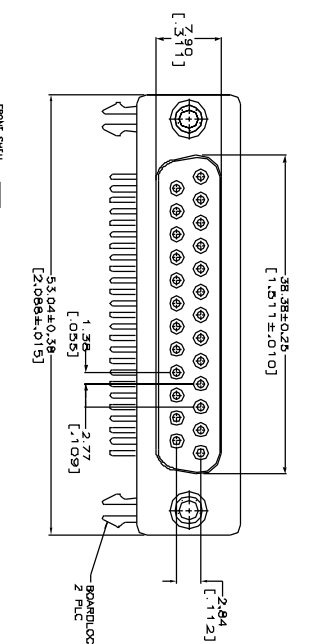
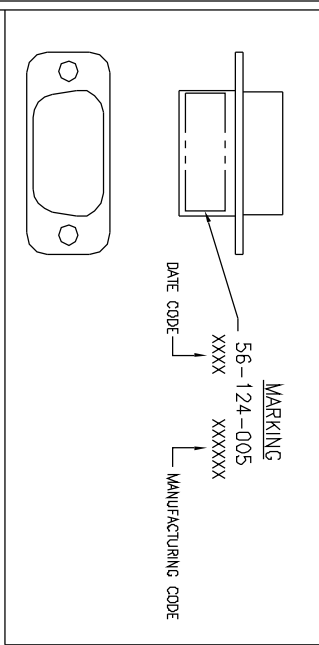


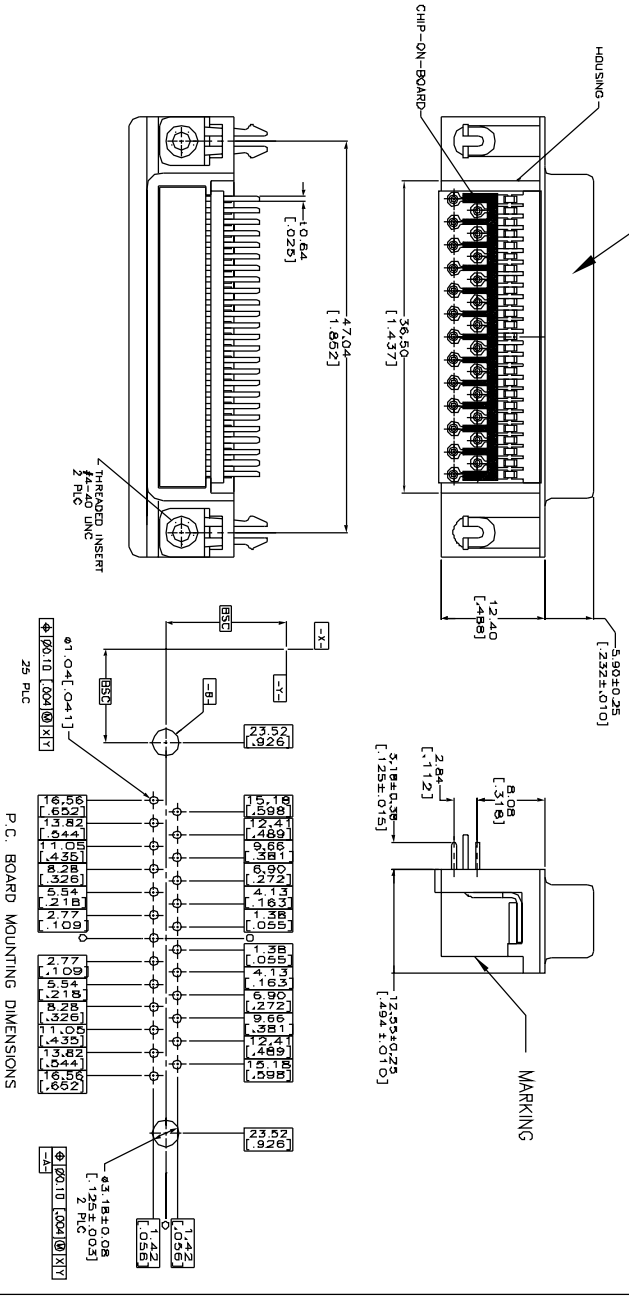
| CONN SIZE | FILTER CIRCUITS | CAPACITANCE | | TOLERANCE | 3 dB MAX CUTOFF FREQ (MHz) | DELECTRIC WITHSTANDING VOLTAGE | CONTACT RATING | CONTACT RESIST | WORKING VOLTAGE | | MINIMUM INSERTION LOSS-DECIBELS (dB) | | | | | | |
|-----------|-----------------|-------------|------------|-----------|----------------------------|--------------------------------|----------------|----------------|-----------------|----------------|--------------------------------------|--------|---------|---------|---------|-------|---|
| | | VALUE | PERCENTAGE | | | | | | DC | -25°C TO +85°C | 25 MHz | 50 MHz | 100 MHz | 300 MHz | 500 MHz | 1 GHz | |
| 25 | FT | 820pF | +/-20% | | - | 250V | 5A | .008 OHM MAX | 100V | - | - | - | - | - | - | - | - |



NOTES:
 1. MATERIAL
 HOUSING: POLYESTER, GLASS FILLED, BLACK.
 FRONT SHELL: CARBON STEEL.
 EYELETS: BRASS
 CONTACTS: PHOSPHOR BRONZE
 BOARD LOCKS: COPPER ALLOY
 THREADED INSERTS: ZINC.
 2. FINISH
 FRONT SHELL: 2.54um [0.00100] MIN. TIN OVER 1.27um [0.00050] MIN. COPPER
 CONTACTS: 0.76um [0.00030] MIN. GOLD FOR A LENGTH OF 2.61 [1.50] MIN. FROM
 BOARD END. 2.54um [0.00100] MIN. TIN OVER A LENGTH OF 3.56 [1.40] MIN. FROM
 BOARD END. 2.54um [0.00100] MIN. TIN OVER A LENGTH OF 3.56 [1.40] MIN. FROM
 BOARD LOCKS. 3.81um [0.00150] MIN. IN-LEAD OVER 1.27um [0.00050] MIN. NICKEL.
 EXCEPTS 6.08um [0.00200] MIN. TIN OVER COPPER FLASH.

THIS DRAWING CONTAIN PROPRIETARY INFORMATION, SPECTRUM CONTROL RESERVES ALL RIGHTS. THIS DOCUMENT SHALL NOT BE REPRODUCED IN WHOLE OR IN PART FOR ANY PURPOSE.

| | | | |
|------------------------------------|-----------|------|------|
| STEP 0100 | CAP./D.F. | PASS | FAIL |
| PER OMS104-ATT-0100 | OPER: | | |
| SAMPLE SIZE: 100% | | | |
| COMMENTS: ALL | | | |
| D.F. 10% MAX. | | | |
| CAP: 656pF TO 984pF | | | |
| STEP 0200 | DWV | PASS | FAIL |
| PER OMS104-ATT-0100 | OPER: | | |
| SAMPLE SIZE: 100% | | | |
| COMMENTS: ALL FILTERS | | | |
| DWV 250 VDC 500 Mohm | | | |
| 25°C. 5 SECONDS MAX | | | |
| STEP 0300 | VISUAL | PASS | FAIL |
| PER OMS104-ATT-0100 | OPER: | | |
| SAMPLE SIZE: 100% | | | |
| COMMENTS: | | | |
| INSPECT DIMENSIONS AND WORKMANSHIP | | | |



| | | | | | | | |
|---|---------|------------|------------|--|---|------------------------|-----------------------------------|
| 02 | 01 | 00 | REV. NO. | UNLESS OTHERWISE SPECIFIED DIMENSIONS ARE IN INCHES. CAD SCALE: N/A | TOLERANCES UNLESS OTHERWISE SPECIFIED FRACTIONS ± 1/64 Dec. .xxx± .02 Dec. .xxx± .015 Angles ±0° 30' | SPECTRUM CONTROL, INC. | Description 25 POS. COB ASS'Y. |
| CN 14291-CPD | REDRAWN | ECN. 99191 | ECN. 99163 | | | | |
| UNLESS OTHERWISE SPECIFIED DIMENSIONS ARE IN INCHES. CAD SCALE: N/A TOLERANCES UNLESS OTHERWISE SPECIFIED FRACTIONS ± 1/64 Dec. .xxx± .02 Dec. .xxx± .015 Angles ±0° 30' CODE IDENT. NO. OLSPP2 Sheet 1 of 1 A 56-124-005 | | | | | | | |

Quality Products From The Specialists In Electro-Magnetic Compatibility